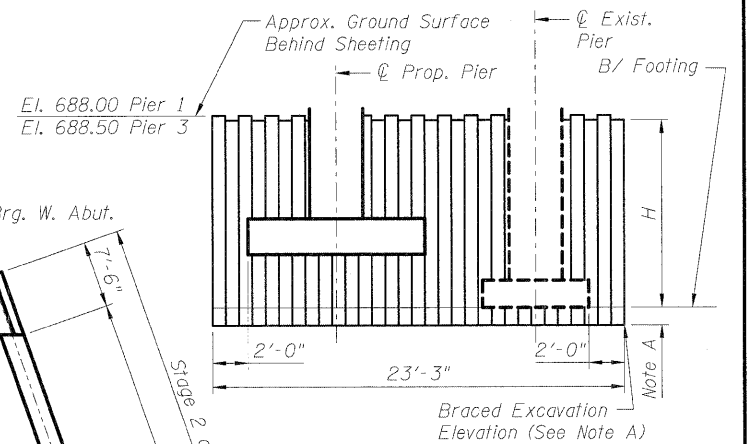
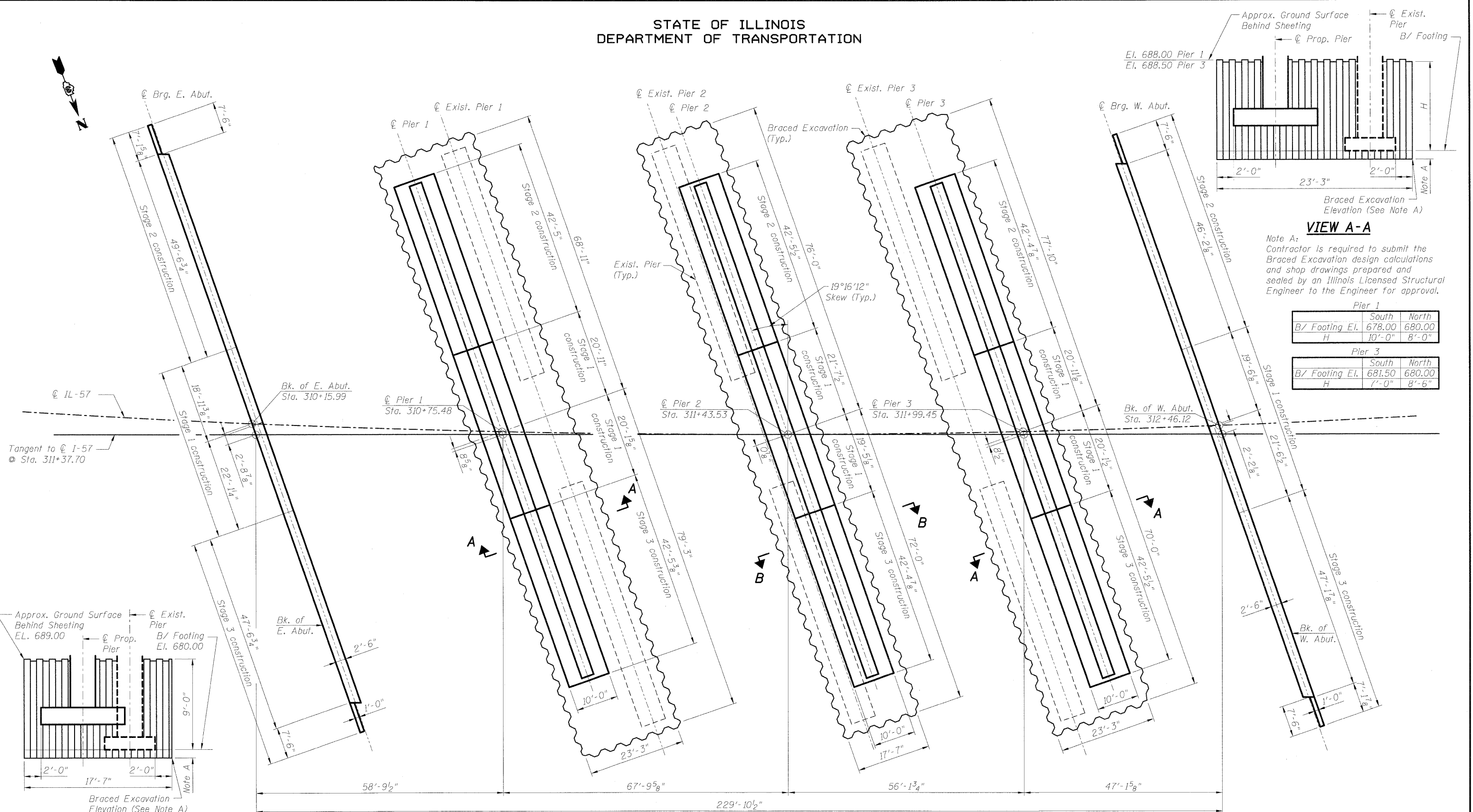


STATE OF ILLINOIS  
DEPARTMENT OF TRANSPORTATION



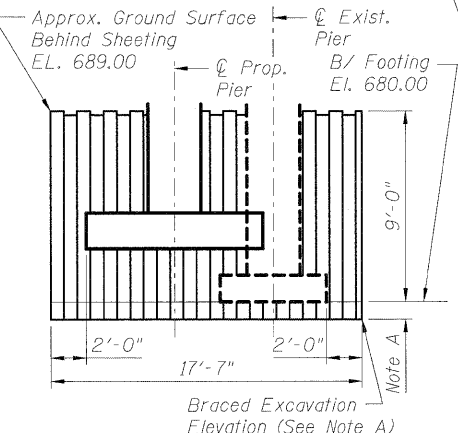
**VIEW A-A**

Note A:  
Contractor is required to submit the Braced Excavation design calculations and shop drawings prepared and sealed by an Illinois Licensed Structural Engineer to the Engineer for approval.

Pier 1		
	South	North
B/ Footing El.	678.00	680.00
H	10'-0"	8'-0"

Pier 3		
	South	North
B/ Footing El.	681.50	680.00
H	7'-0"	8'-6"



**VIEW B-B**

**FOOTING LAYOUT**

**FOOTING LAYOUT  
STRUCTURE NO. 046-0144 (S.B.)  
& STRUCTURE NO. 046-0145 (N.B.)**

**NOTES:**  
Work this sheet with sheets SH-38 thru SH-41 & sheets SH-43 thru SH-48.  
Existing abutments not shown.

DESIGNED	PMH
CHECKED	BB
DRAWN	PMH
CHECKED	BB

**McDonough Associates Inc.**  
Engineers / Architects  
130 East Randolph Street  
Chicago, Illinois 60601  
(312) 946-8600

SHEET NO. SH-4 SHEETS SH-56	F.A.I. RTE.	SECTION	COUNTY	TOTAL SHEETS	SHEET NO.
	57	(46-2) HBR	KANKAKEE	558	275
CONTRACT NO. 66409					
FED. ROAD DIST. NO. 3   ILLINOIS   FED. AID PROJECT					