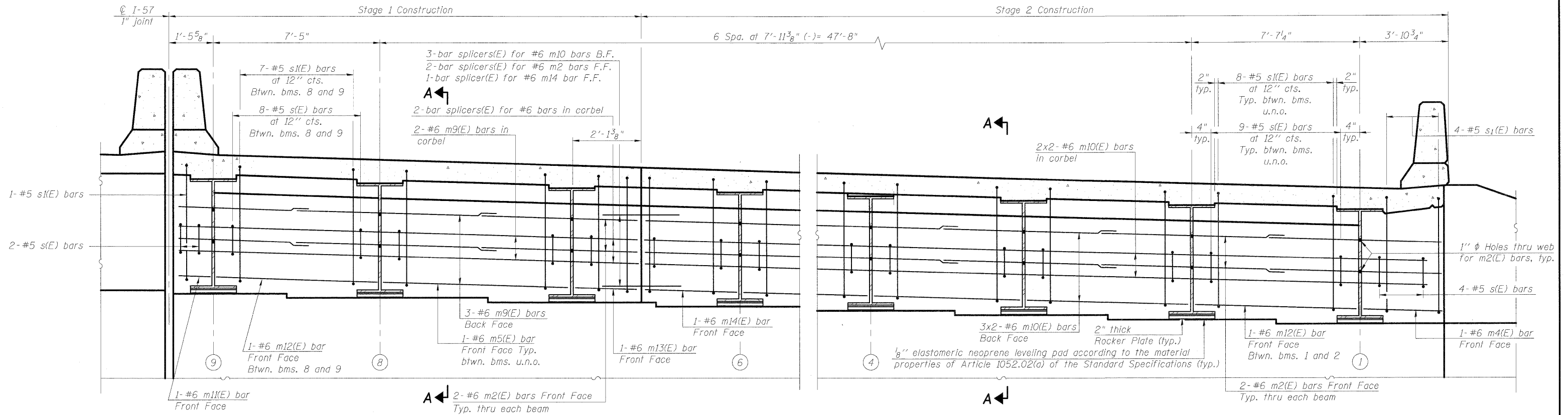


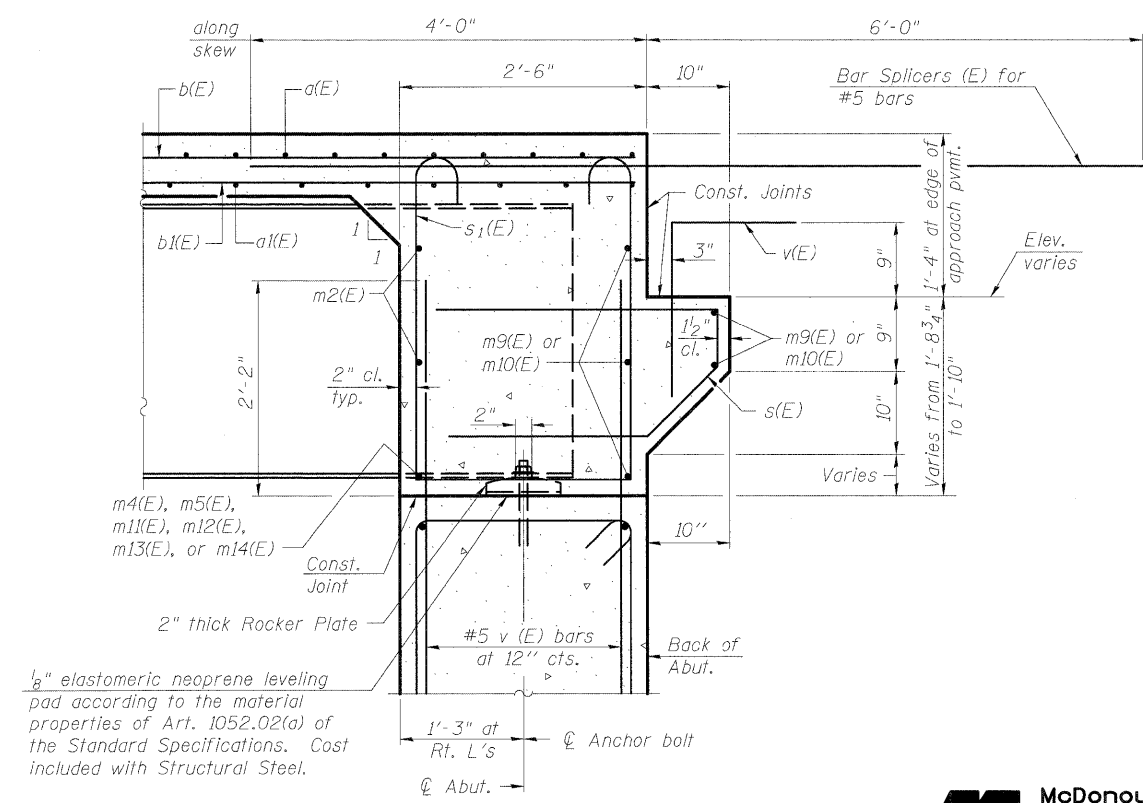
STATE OF ILLINOIS
DEPARTMENT OF TRANSPORTATION



DIAPHRAGM ELEVATION AT EAST ABUTMENT (SB)
Looking East

MIN. BAR LAP
#6 bar = 3'-4"

Notes:
Reinforcement bars in diaphragm are billed with superstructure on sheet SH-22.
Concrete in diaphragm is included with Concrete Superstructure on sheet SH-22.
For details of bars s(E) & s1(E) see sheet SH-22.
The s(E) and s1(E) bars shall be placed parallel to the beams. Spacing for these bars shall be at right angles to the beams.



SECTION A-A
Dimensions at right angles to abutment, except as shown.

DESIGNED	AWW
CHECKED	PMH
DRAWN	AMV
CHECKED	AWW

McDonough Associates Inc.
Engineers / Architects
130 East Randolph Street
Chicago, Illinois 60601
(312) 946-8600

SHEET NO. SH-24 SHEETS SH-56	F.A.I. RTE.	SECTION	COUNTY	TOTAL SHEETS	SHEET NO.
	57	(46-2) HBR	KANKAKEE	558	295
CONTRACT NO. 66409					
FED. ROAD DIST. NO. 3 ILLINOIS FED. AID PROJECT					