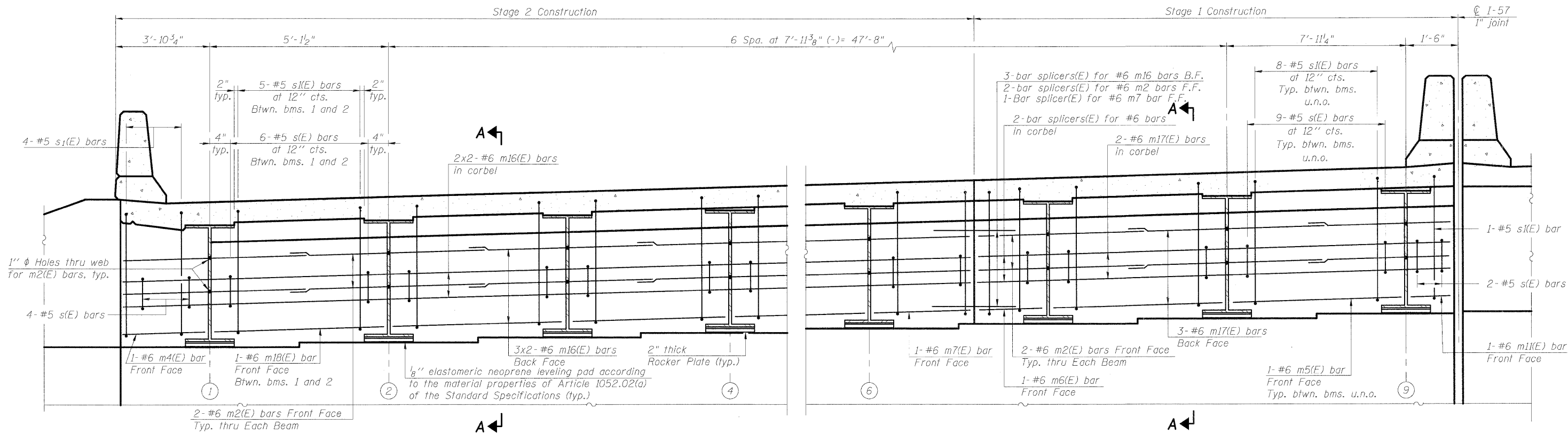
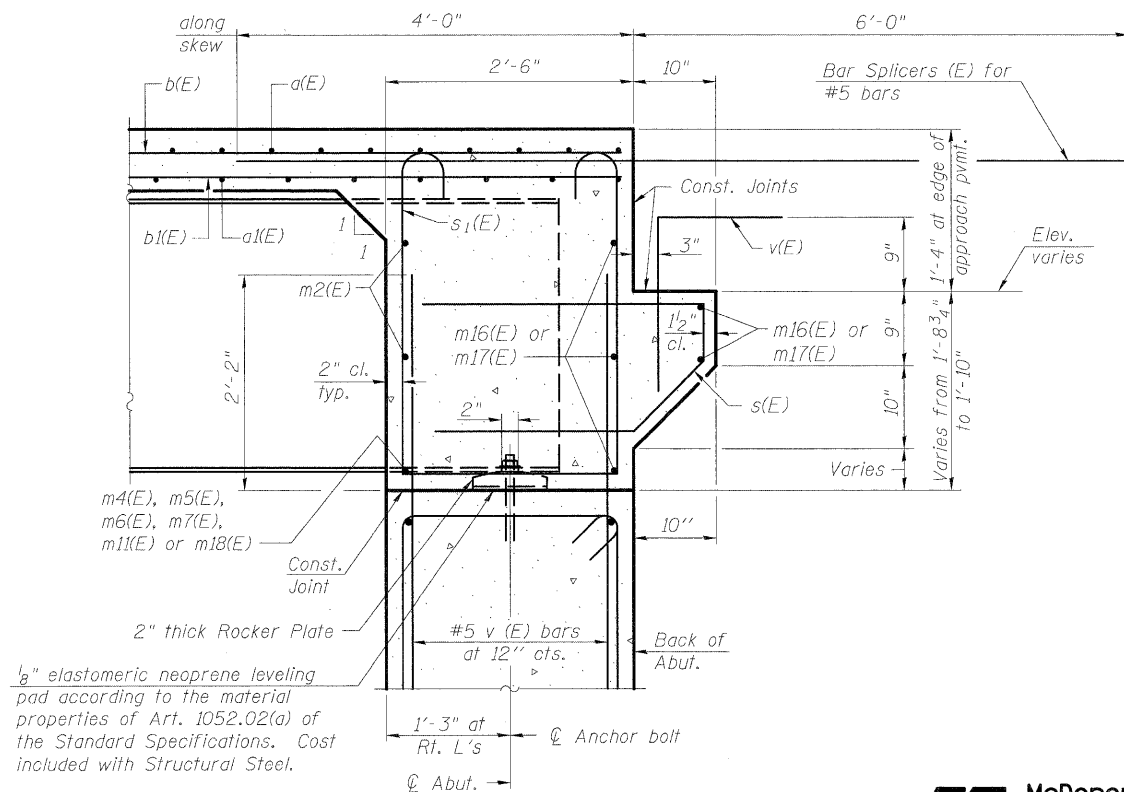


STATE OF ILLINOIS
DEPARTMENT OF TRANSPORTATION



DIAPHRAGM ELEVATION AT WEST ABUTMENT (SB)

Looking West



SECTION A-A

Dimensions at right angles to abutment, except as shown.

MIN. BAR LAP

#6 bar = 3'-4"

Notes:

Reinforcement bars in diaphragm are billed with superstructure on sheet SH-22.
Concrete in diaphragm is included with Concrete Superstructure on sheet SH-22.
For details of bars s(E) & s1(E) see sheet SH-22.
The s(E) and s1(E) bars shall be placed parallel to the beams. Spacing for these bars shall be at right angles to the beams.

**DIAPHRAGM AT WEST ABUTMENT (SB)
STRUCTURE NO. 046-0144 (S.B.)
& STRUCTURE NO. 046-0145 (N.B.)**

DESIGNED	AWW
CHECKED	PMH
DRAWN	AMV
CHECKED	AWW



McDonough Associates Inc.
Engineers / Architects
130 East Randolph Street
Chicago, Illinois 60601
(312) 946-8600

SHEET NO. SH-26 SHEETS SH-56	F.A.I. RTE.	SECTION	COUNTY	TOTAL SHEETS	SHEET NO.
	57	(46-2) HBR	KANKAKEE	558	297
CONTRACT NO. 66409					
FED. ROAD DIST. NO. 3 ILLINOIS FED. AID PROJECT					