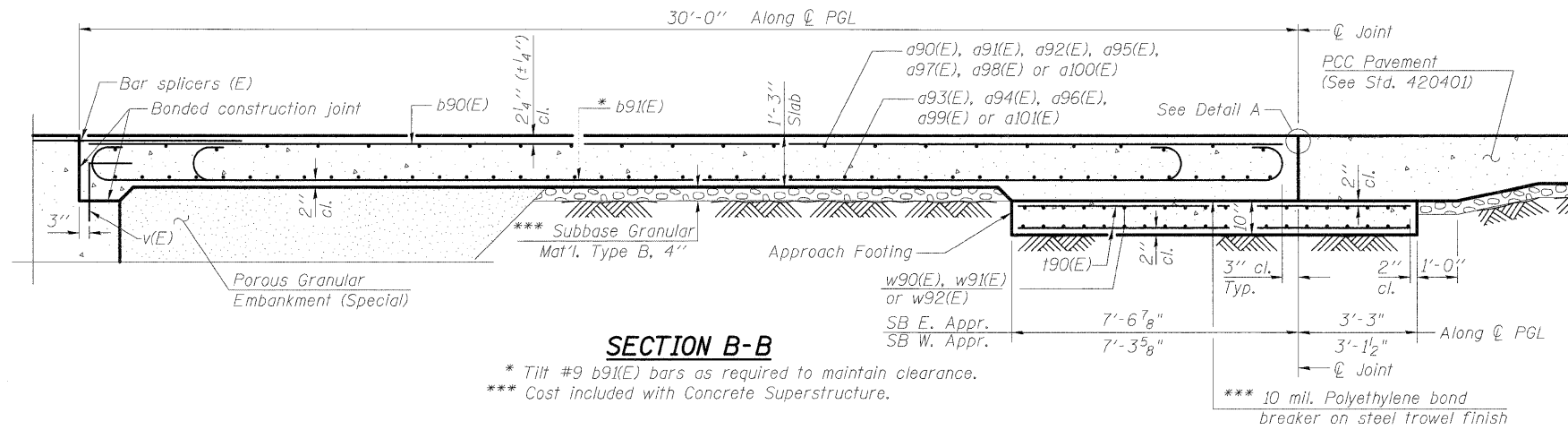


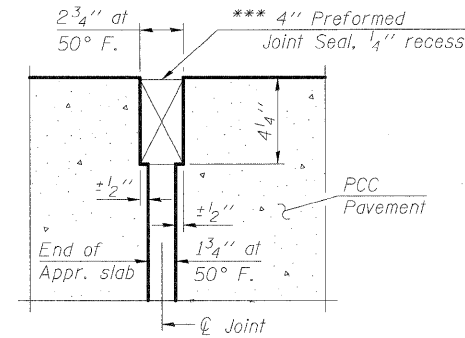
STATE OF ILLINOIS
DEPARTMENT OF TRANSPORTATION

Notes:
Approach slab and parapet concrete shall be paid for as Concrete Superstructure.
Approach Footing concrete shall be paid for as Concrete Structures.
Reinforcement shall be paid for as Reinforcement Bars, Epoxy Coated.
For v(E) bar details, see sheets SH-22.
The approach footing maximum applied service bearing pressure (Qmax) = 2.0 ksf.
For bar splicer details, see sheet SH-51.
Cost of excavation for approach footing included with Concrete Structures.
For Porous Granular Embankment (Special) and drainage treatment details, see sheet SH-2.
For additional parapet details, see sheets SH-20 & SH-21.



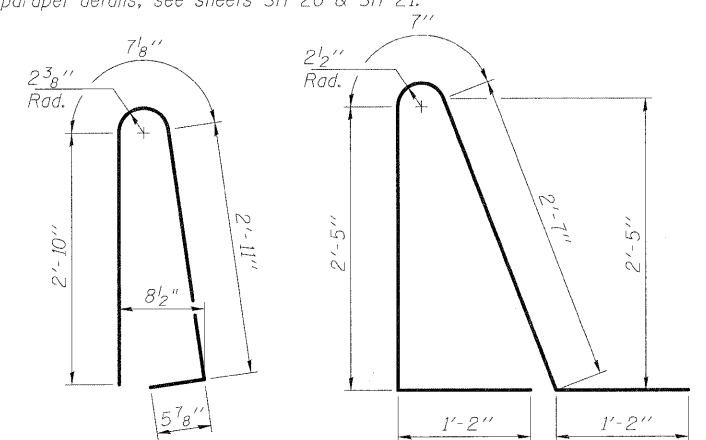
SECTION B-B

* Tilt #9 b91(E) bars as required to maintain clearance.
*** Cost included with Concrete Superstructure.



DETAIL A

*** Cost included with Concrete Superstructure.



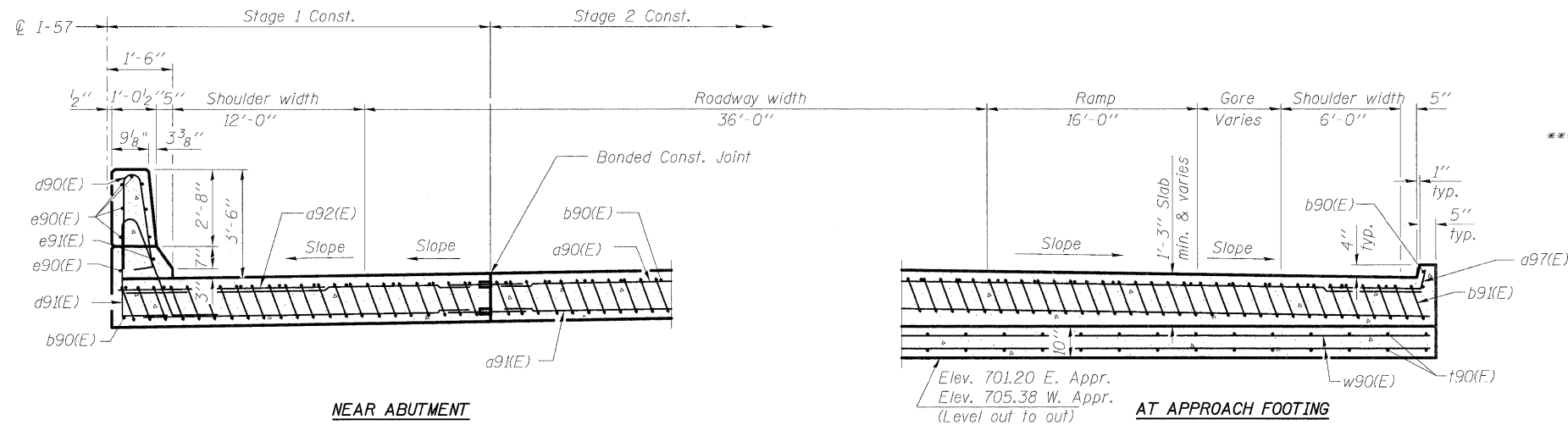
BAR d90(E)

BAR d91(E)

**SOUTHBOUND APPROACHES
BILL OF MATERIAL**

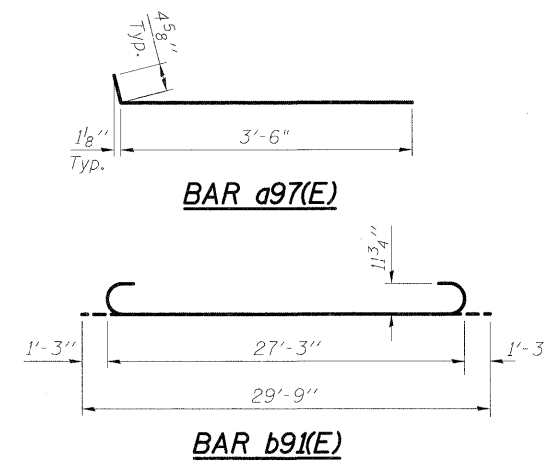
Bar	Stage		Size	Length	Shape
	No.	No.			
a90(E)	25		#4	16'-11"	—
a91(E)	50		#4	4'-0"	—
a92(E)	50		#6	6'-6"	—
a93(E)	46		#5	16'-11"	—
a94(E)	92		#5	4'-3"	—
a95(E)	25		#4	17'-8"	—
a96(E)	46		#5	17'-8"	—
a97(E)		50	#4	4'-1"	—
a98(E)		50	#4	26'-3"	—
a99(E)		92	#5	26'-5"	—
a100(E)		50	#4	23'-3"	—
a101(E)		92	#5	23'-5"	—
b90(E)	32	76	#4	29'-8"	—
b91(E)	87	221	#9	29'-9"	—
d90(E)	68		#5	6'-10"	—
d91(E)	68		#5	7'-11"	—
e90(E)	28		#4	14'-8"	—
e91(E)	2		#8	29'-8"	—
e92(E)	2		#4	14'-8"	—
t90(E)	70	186	#4	10'-4"	—
w90(E)	40		#5	16'-11"	—
w91(E)		80	#5	26'-5"	—
w92(E)	40		#5	17'-8"	—
w93(E)		80	#5	24'-10"	—
Concrete Superstructure			Cu. Yd.	193	
Concrete Structures			Cu. Yd.	41	
* Reinforcement Bars, Epoxy Coated			Pound	52,130	

* Includes 7,490 lbs. for Approach Footing. Quantity included with substructure.



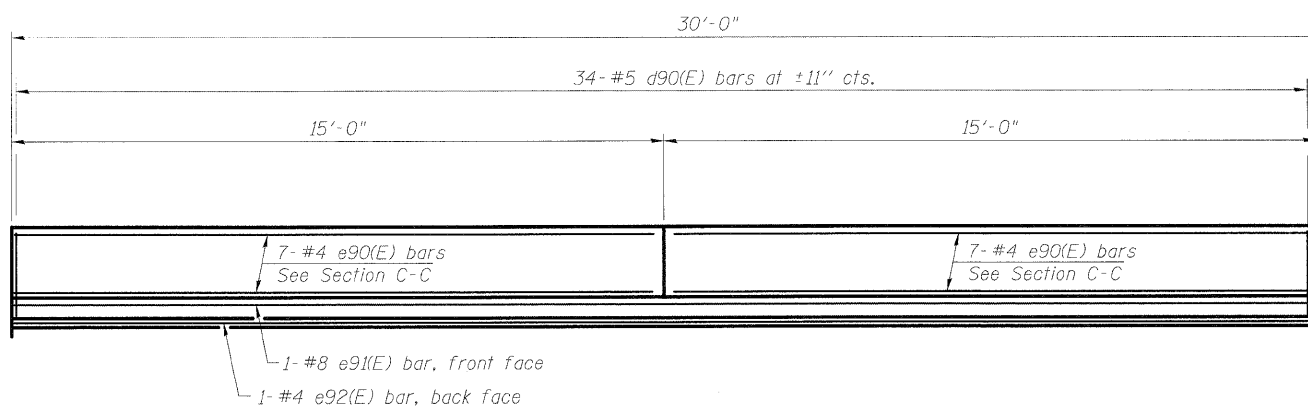
SECTION C-C

(See Plan for dimensions not shown)



BAR a97(E)

BAR b91(E)



VIEW D-D

East Approach shown, West Approach similar.

DESIGNED	RJ
CHECKED	MJL
DRAWN	RJ
CHECKED	MJL

McDonough Associates Inc.
Engineers / Architects
130 East Randolph Street
Chicago, Illinois 60601
(312) 946-8600

SHEET NO. SH-29 SHEETS SH-56	F.A.I. RTE.	SECTION	COUNTY	TOTAL SHEETS	SHEET NO.
	57	(46-2) HBR	KANKAKEE	558	300
CONTRACT NO. 66409					
FED. ROAD DIST. NO. 3 ILLINOIS FED. AID PROJECT					