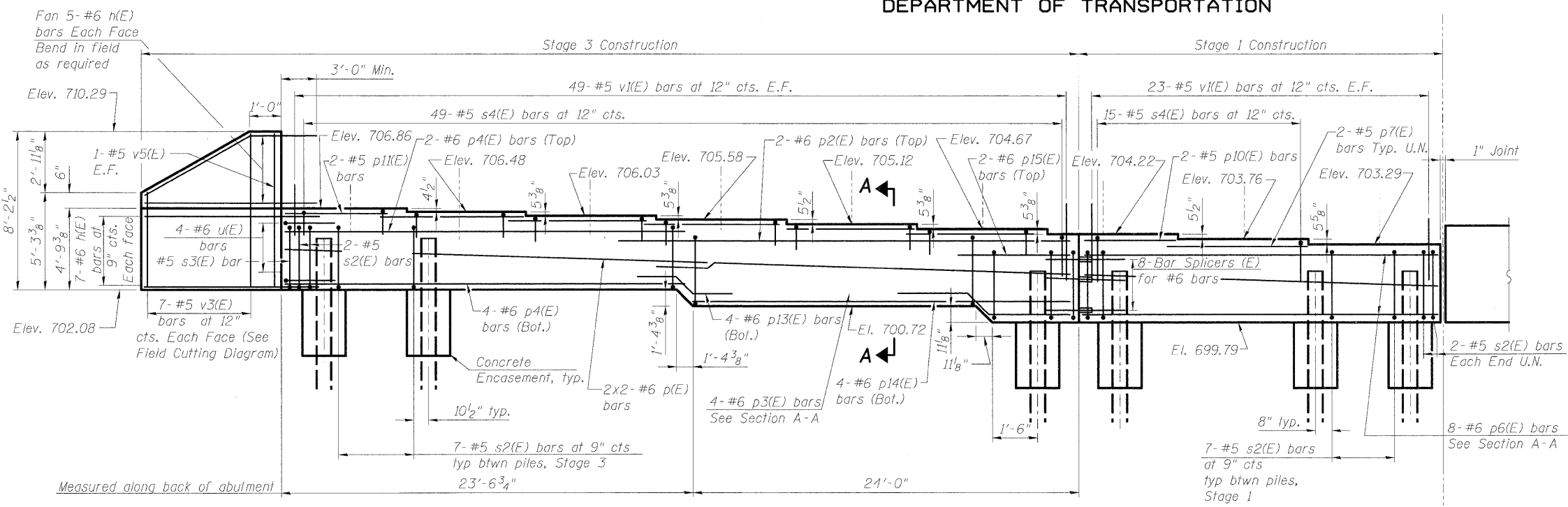
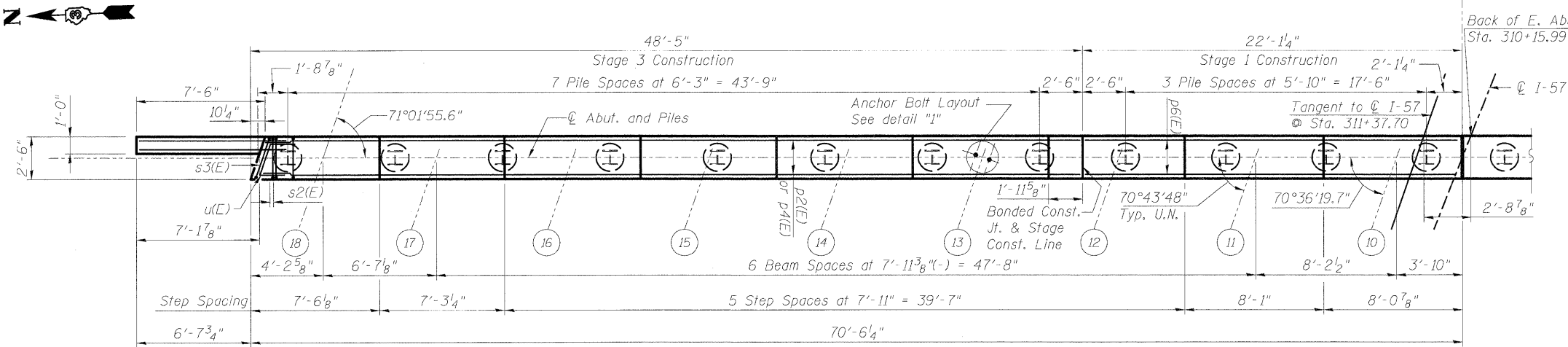


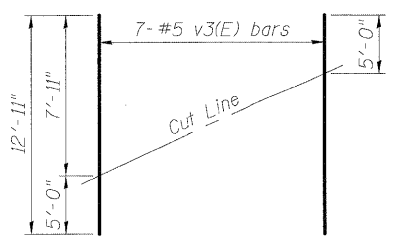
STATE OF ILLINOIS
DEPARTMENT OF TRANSPORTATION



EAST ABUTMENT ELEVATION (NB)



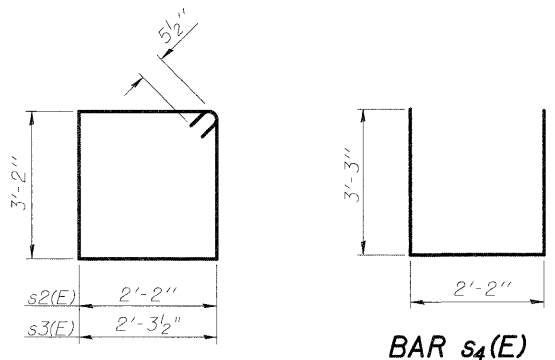
PLAN



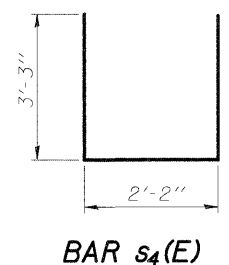
FIELD CUTTING DIAGRAM

Order v3(E) full length. Cut as shown and use remainder of bars in opposite face.

Notes:
Pour steps monolithically with cap.
For details of Bar Splicers, see Sht. SH-51.
For details of piles and Concrete Encasement, see Sht. SH-52.
Bars indicated thus 2 x 2-#6 etc. indicates 2 lines of bars with 2 lengths per line.
For Section A-A see Sht. SH-38.



BARS s2(E) & s3(E)

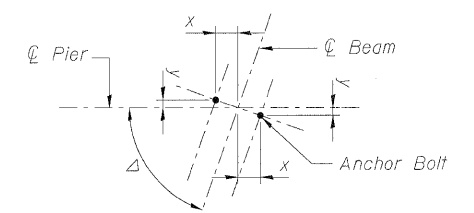


BAR s4(E)

BILL OF MATERIAL

Bar	Stage 1	Stage 2	Stage 3	Size	Length	Shape
h(E)		28	24	#6	12'-4"	
p(E)		4	4	#6	26'-8"	
p1(E)	8			#6	18'-7"	
p2(E)		2	2	#6	29'-5"	
p3(E)		4	4	#6	22'-10"	
p4(E)		6	6	#6	24'-0"	
p6(E)	8			#6	21'-9"	
p7(E)	6	8	10	#5	10'-11"	
p8(E)	2			#5	4'-8"	
p9(E)		2		#5	9'-5"	
p10(E)	2			#5	5'-8"	
p11(E)			2	#5	6'-4"	
p12(E)	4			#6	9'-3"	
p13(E)		4	4	#6	9'-8"	
p14(E)			4	#6	9'-0"	
p15(E)	2		2	#6	7'-6"	
s2(E)	45	53	53	#5	11'-7"	
s3(E)		1	1	#5	11'-10"	
s4(E)	35	42	49	#5	8'-8"	
u(E)		4	4	#6	10'-5"	
v1(E)	86	102	98	#5	4'-4"	
v2(E)		7		#5	10'-0"	
v3(E)			7	#5	12'-11"	
v4(E)		2		#5	6'-4"	
v5(E)			2	#5	7'-10"	

Structure Excavation	Cu. Yd.	360
Reinforcement Bars, Epoxy Coated	Pound	7,860
Concrete Structures	Cu. Yd.	57
Concrete Encasement	Cu. Yd.	8
Furnishing Steel Piles, HP 10x57	Foot	836
Driving Piles	Foot	836
Test Pile Steel HP 10 x 57	Each	1
Pile Shoes	Each	23



Beam No.	Δ	x	y
10	70°36'19.7"	4 3/4"	1 5/8"
11 thru 17	70°43'48"	4 3/4"	1 5/8"
18	71°01'55.6"	4 3/4"	1 5/8"

DETAIL "1"
ANCHOR BOLT LAYOUT

EAST ABUTMENT & DETAILS (NB)
STRUCTURE NO. 046-0144 (S.B.)
& STRUCTURE NO. 046-0145 (N.B.)

DESIGNED	PMH
CHECKED	MJL
DRAWN	PMH
CHECKED	MJL

SHEET NO.	F.A.I. RTE.	SECTION	COUNTY	TOTAL SHEETS	SHEET NO.
SH-39	57	(46-2) HBR	KANKAKEE	558	310
SHEETS	CONTRACT NO. 66409				
SH-56	FED. ROAD DIST. NO. 3 ILLINOIS FED. AID PROJECT				

McDonough Associates Inc.
Engineers / Architects
130 East Randolph Street
Chicago, Illinois 60601
(312) 946-8600