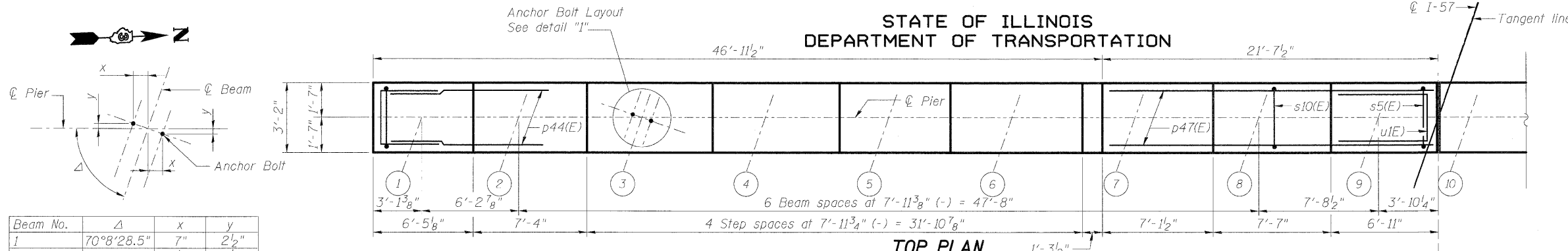
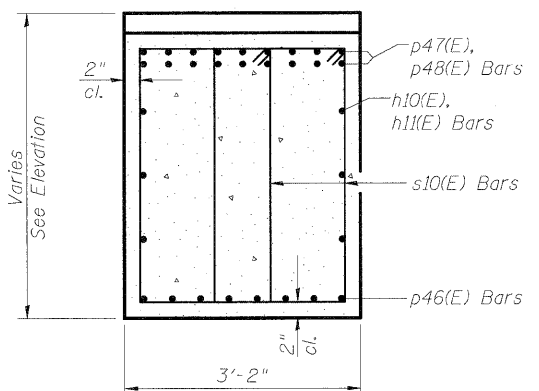
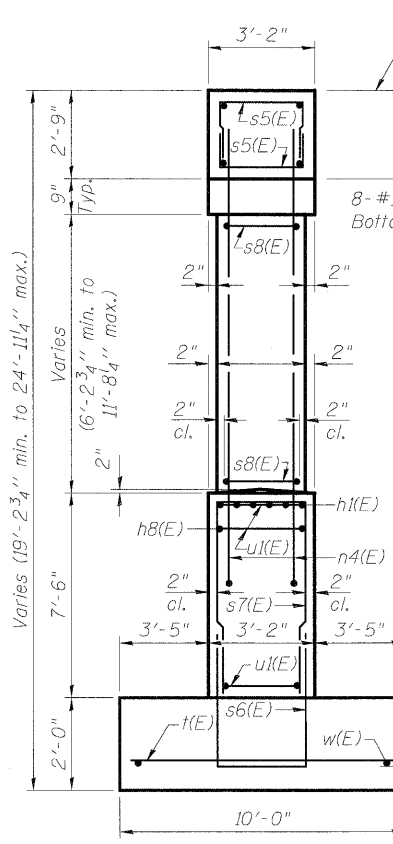


STATE OF ILLINOIS
DEPARTMENT OF TRANSPORTATION

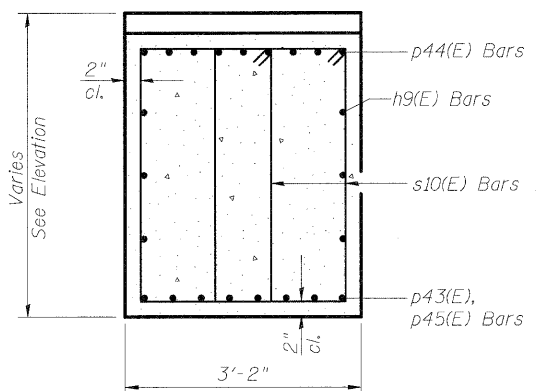


Beam No.	Δ	x	y
1	70°8'28.5"	7"	2 1/2"
2 thru 8	70°43'48"	7 1/2"	2 1/2"
9	70°36'19.7"	7 1/2"	2 1/2"

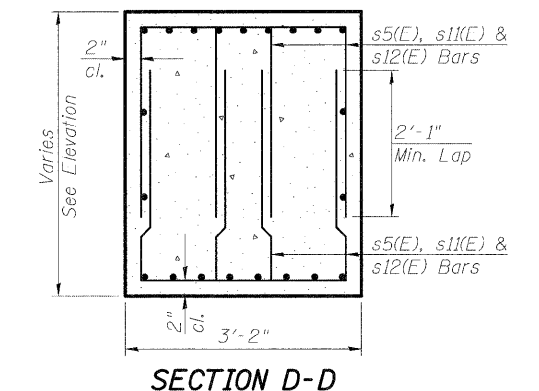
DETAIL "I"
ANCHOR BOLT LAYOUT



SECTION A-A



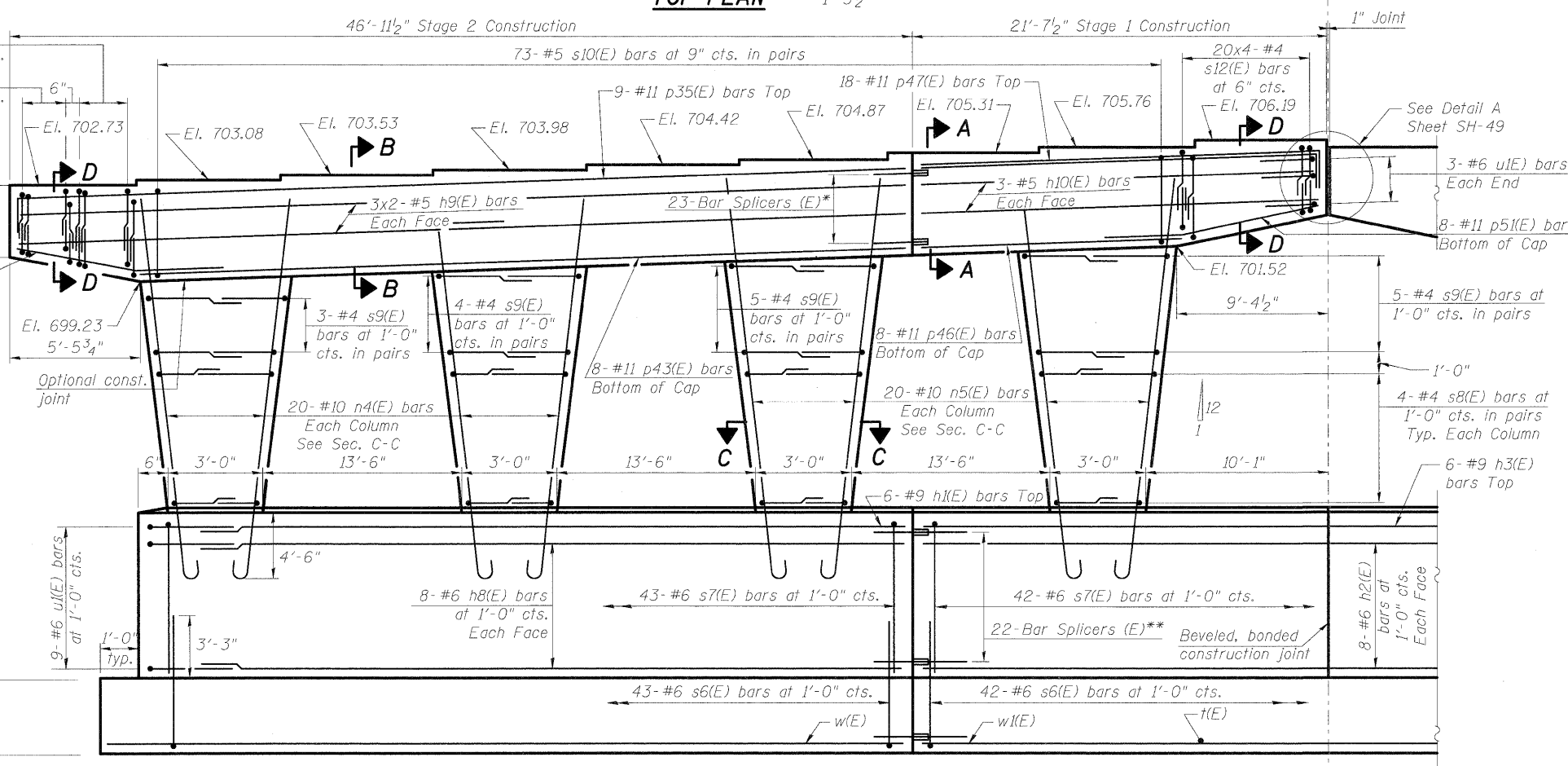
SECTION B-B



SECTION D-D
Typ. Each End

Notes:
Space reinforcement in cap to miss anchor bolts.
Pour steps monolithically with cap.
For Bill of Material, see Sheet SH-46.

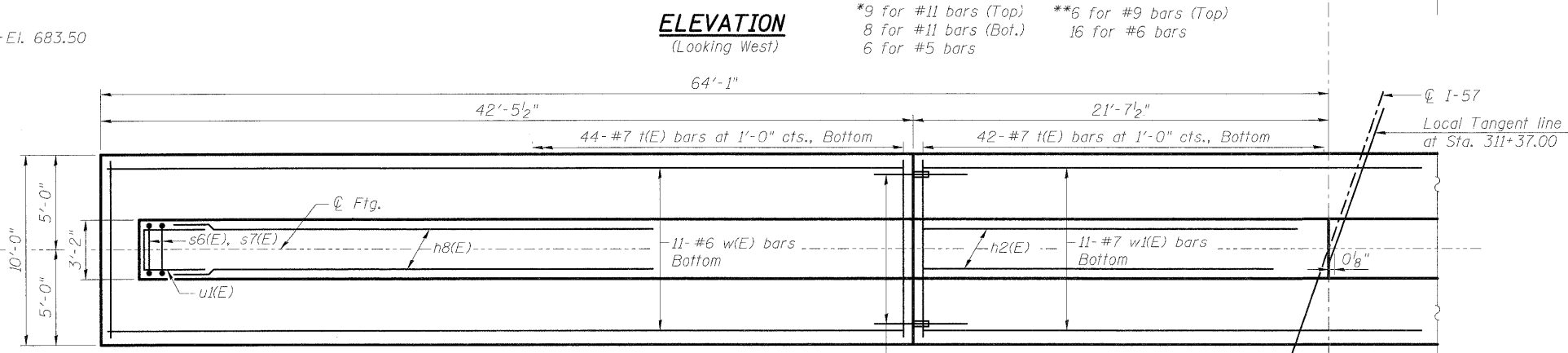
PIER 2 (SB)
STRUCTURE NO. 046-0144 (S.B.)
& STRUCTURE NO. 046-0145 (N.B.)



ELEVATION
(Looking West)

*9 for #11 bars (Top)
8 for #11 bars (Bot.)
6 for #5 bars

**6 for #9 bars (Top)
16 for #6 bars



MINIMUM BAR LAP

(Pier)

Top bars
#5 bar = 2'-11"

Other bars
#4 bar = 2'-1"
#6 bar = 3'-1"

FOOTING PLAN

Maximum Applied Service Bearing Pressure = 3.53 ksf

McDonough Associates Inc.
Engineers / Architects
130 East Randolph Street
Chicago, Illinois 60601
(312) 946-8600

DESIGNED	PMH
CHECKED	MGB
DRAWN	PMH
CHECKED	MJL

SHEET NO. SH-45 SHEETS SH-56	F.A.I. RTE. 57	SECTION (46-2) HBR	COUNTY KANKAKEE	TOTAL SHEETS 558	SHEET NO. 316
	CONTRACT NO. 66409				
FED. ROAD DIST. NO. 3 ILLINOIS FED. AID PROJECT					