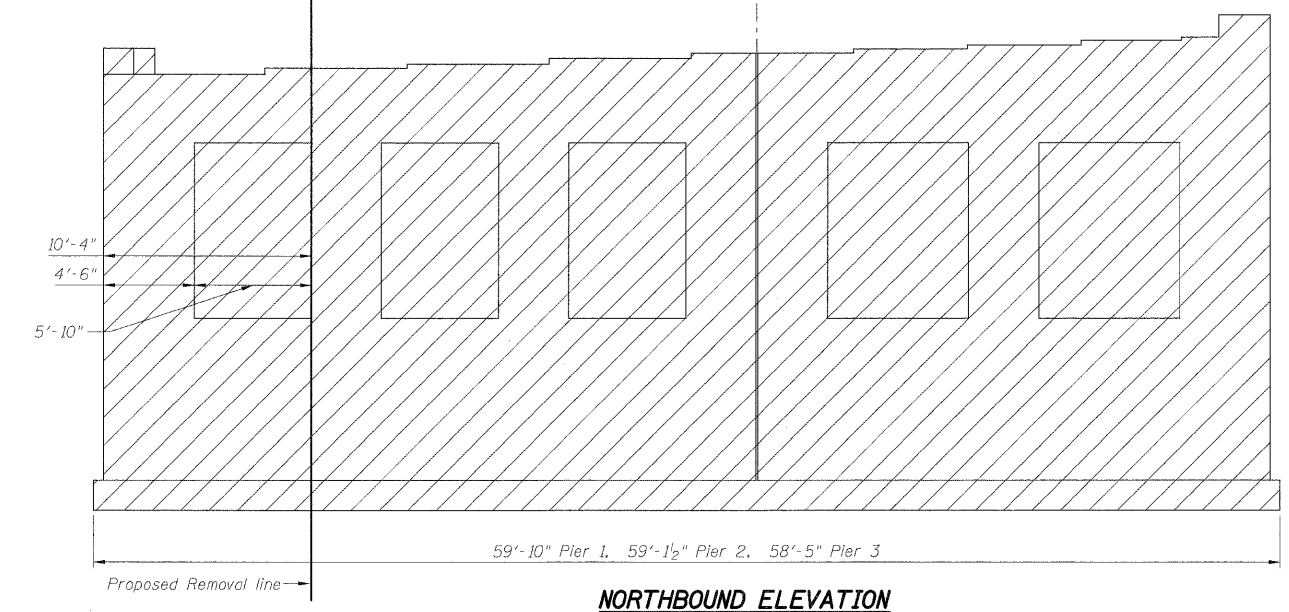
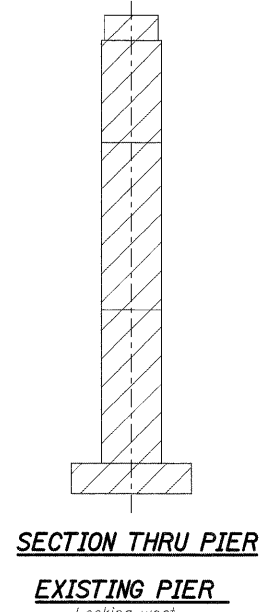
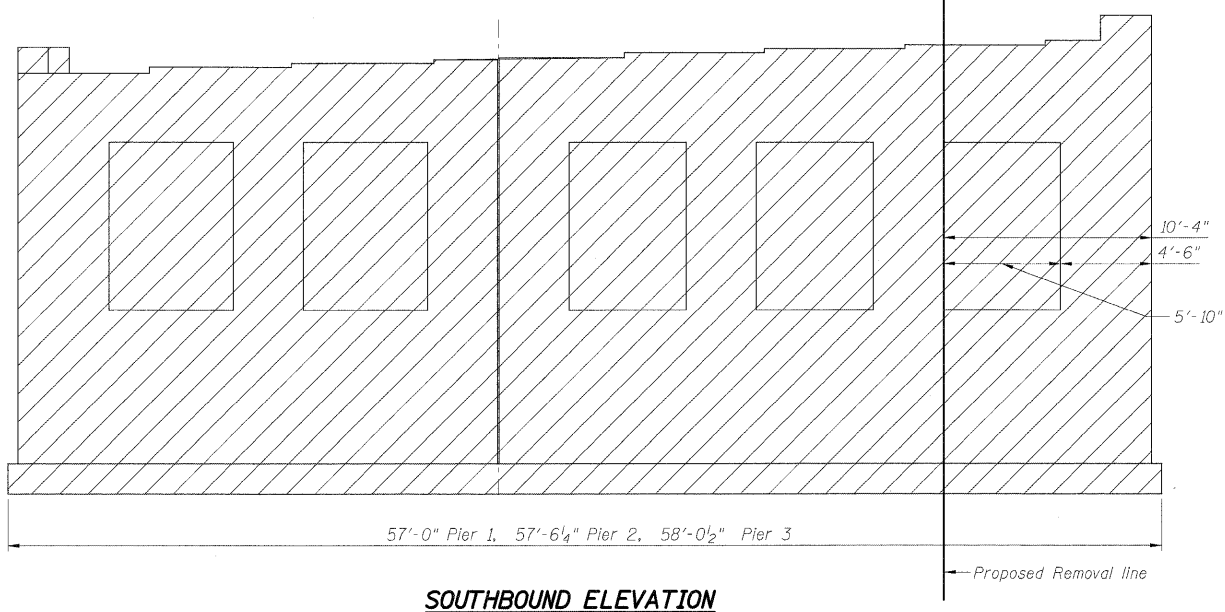
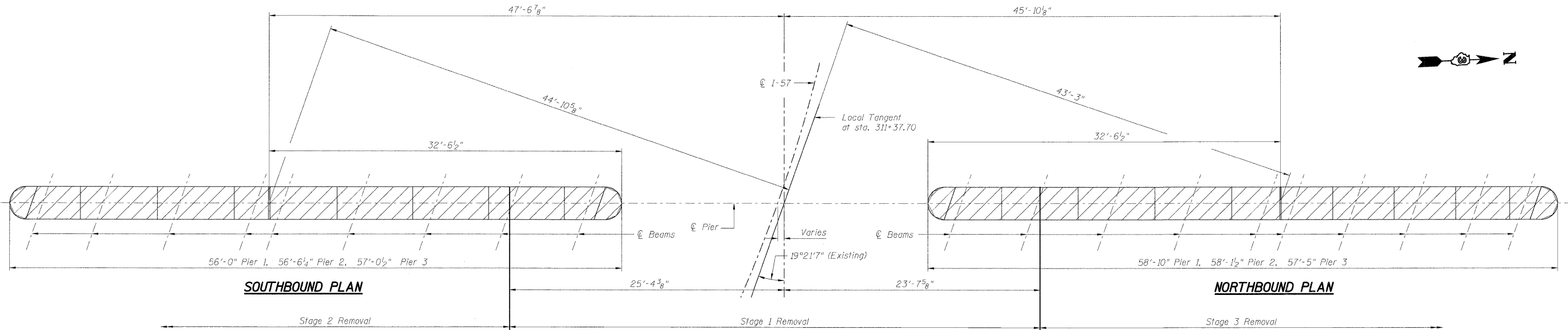
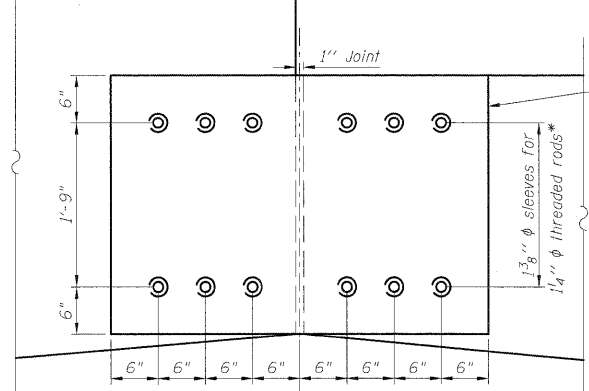
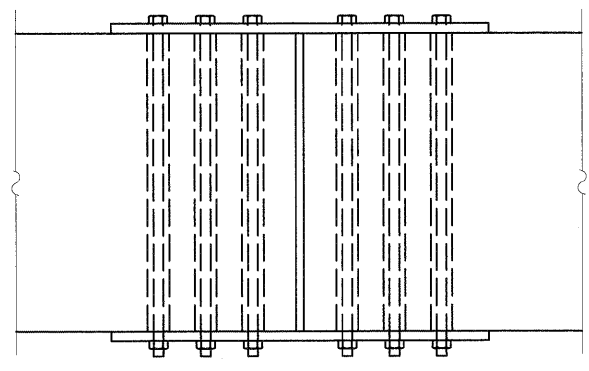


STATE OF ILLINOIS
DEPARTMENT OF TRANSPORTATION



LEGEND
 Concrete Removal



Note A:
 Plates to be installed in Stage 1 and removed after Stage 3 Piers are in place and the concrete has attained a compressive strength of 3,500 psi.
 Sleeves shall be filled with epoxy grout.
 Cost of furnishing & installing the plates, sleeves & rods shall be included with the cost of "Furnishing and Erecting Structural Steel."
 Cost of filling the sleeves with epoxy grout shall be included in the item "Concrete Structures."

DESIGNED	RJ
CHECKED	PMH
DRAWN	RJ
CHECKED	PMH

TOP PLAN

DETAIL A

ELEVATION

McDonough Associates Inc.
 Engineers / Architects
 130 East Randolph Street
 Chicago, Illinois 60601
 (312) 946-8600

**PIERS 1, 2 AND 3 REMOVAL
 STRUCTURE NO. 046-0144 (S.B.)
 & STRUCTURE NO. 046-0145 (N.B.)**

SHEET NO. SH-49 SHEETS SH-56	F.A.I. RTE.	SECTION	COUNTY	TOTAL SHEETS	SHEET NO.
	57	(46-2) HBR	KANKAKEE	558	320
CONTRACT NO. 66409					
FED. ROAD DIST. NO. 3 ILLINOIS FED. AID PROJECT					