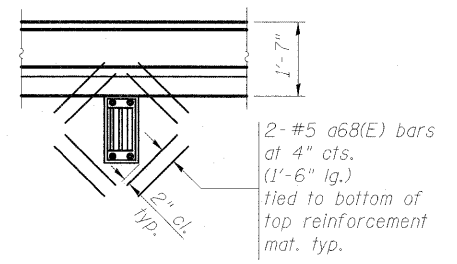
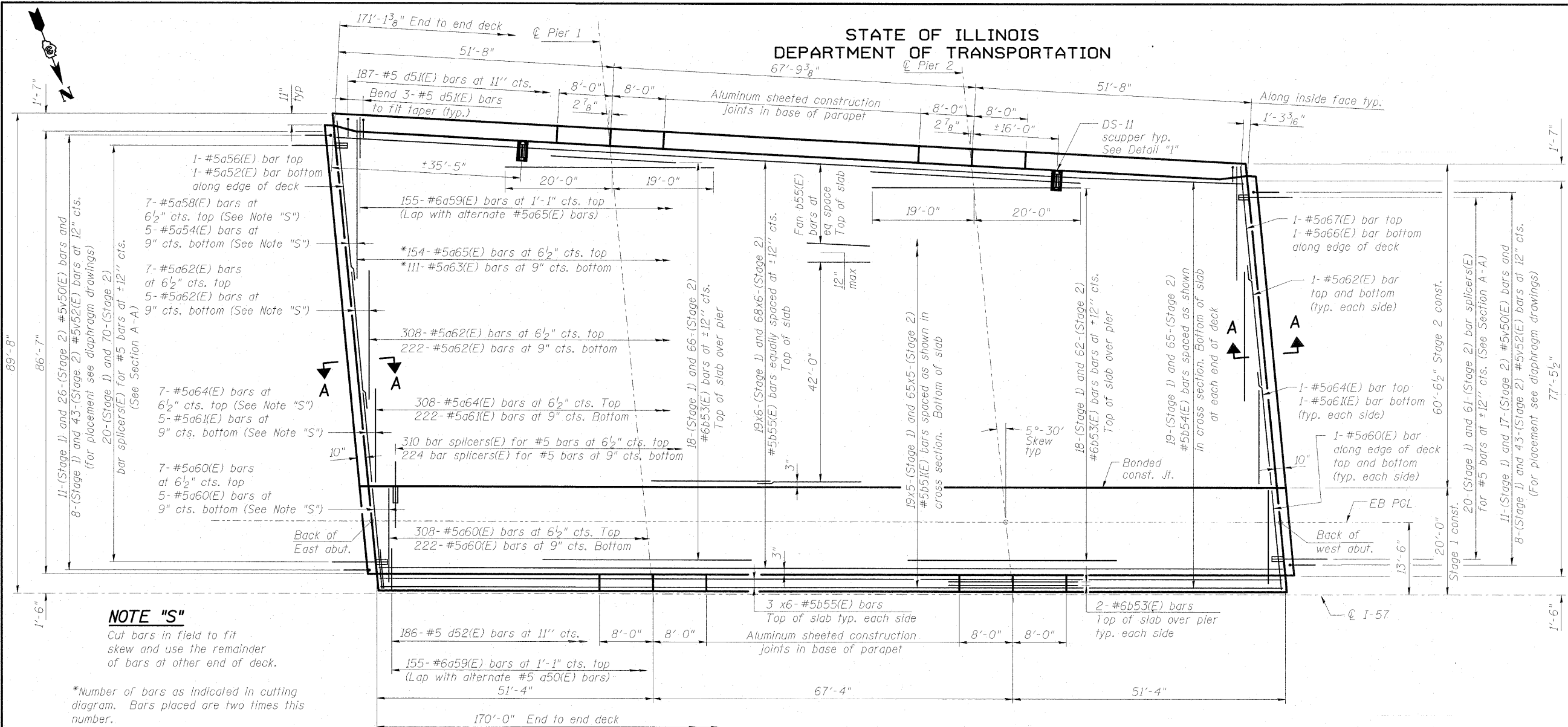


STATE OF ILLINOIS
DEPARTMENT OF TRANSPORTATION



DETAIL "I"

MINIMUM BAR LAP
(Slab)
#5 bar = 2'-7"

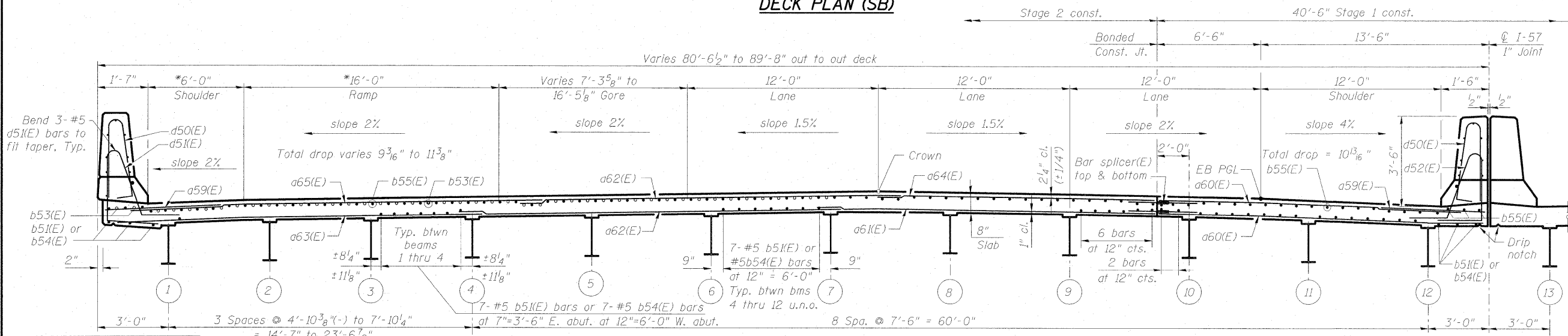
Notes:
Cut longitudinal reinforcement to clear drainage scuppers.
See sheet SR-17 of SR-48 for deck details and Bill of Material.
Bars indicated thus 19 x 6-#5 etc. indicates 79 lines of bars with 6 lengths per line.
See sheet SR-16 of SR-48 for parapet reinforcement.

NOTE "S"

Cut bars in field to fit skew and use the remainder of bars at other end of deck.

*Number of bars as indicated in cutting diagram. Bars placed are two times this number.

DECK PLAN (SB)



DECK PLAN AND SECTION (SB)
STRUCTURE NO. 046-0146 (S.B.)
& STRUCTURE NO. 046-0147 (N.B.)

DESIGNED	AWW
CHECKED	PMH
DRAWN	AMV
CHECKED	AWW

NEAR PIER

CROSS SECTION
(Looking west)

NEAR MIDSPAN

McDonough Associates Inc.
Engineers / Architects
130 East Randolph Street
Chicago, Illinois 60601
(312) 946-8600

SHEET NO. SR-14 SHEETS SR-48	F.A.I. RTE.	SECTION	COUNTY	TOTAL SHEETS	SHEET NO.
	57	(46-2) VBR	KANKAKEE	558	341
CONTRACT NO. 66409					
FED. ROAD DIST. NO. 3 ILLINOIS FED. AID PROJECT					