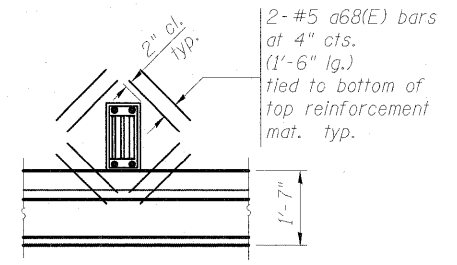
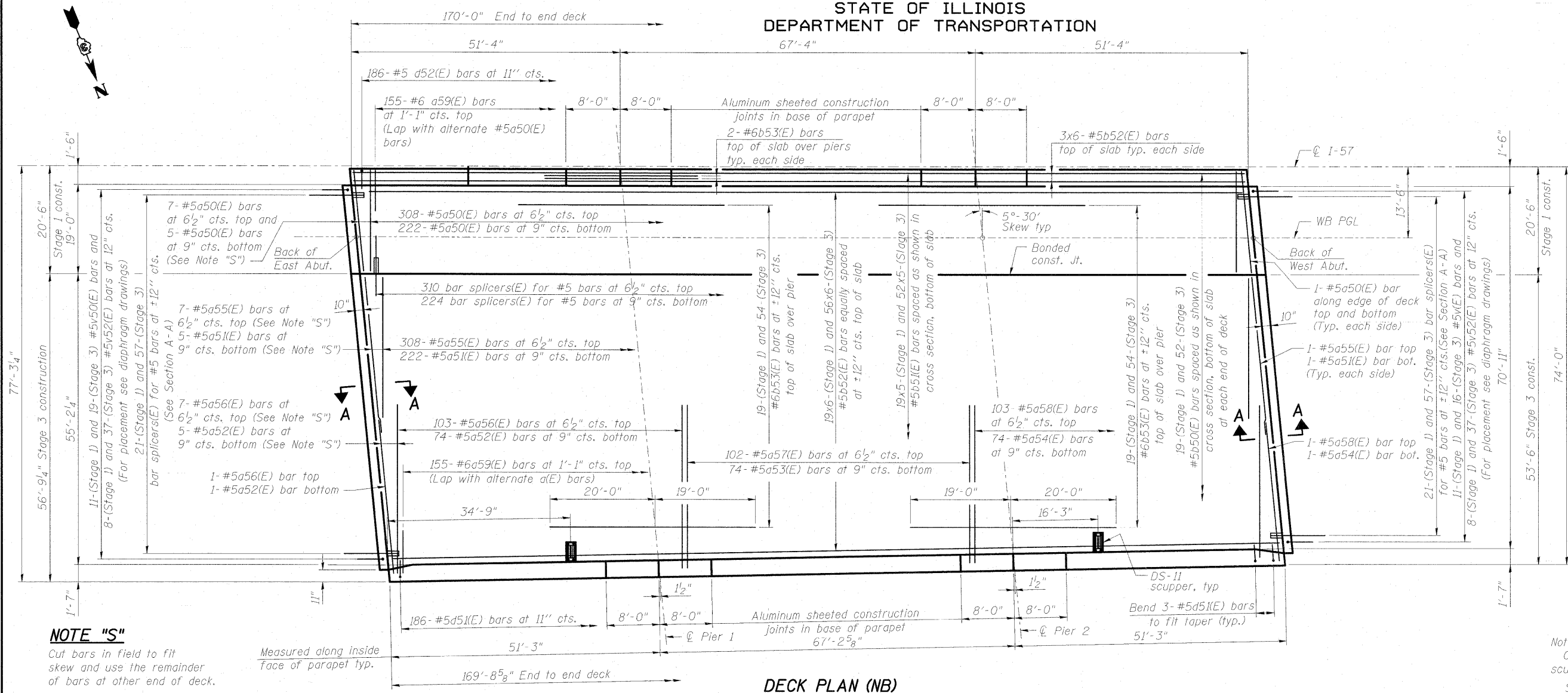


STATE OF ILLINOIS  
DEPARTMENT OF TRANSPORTATION



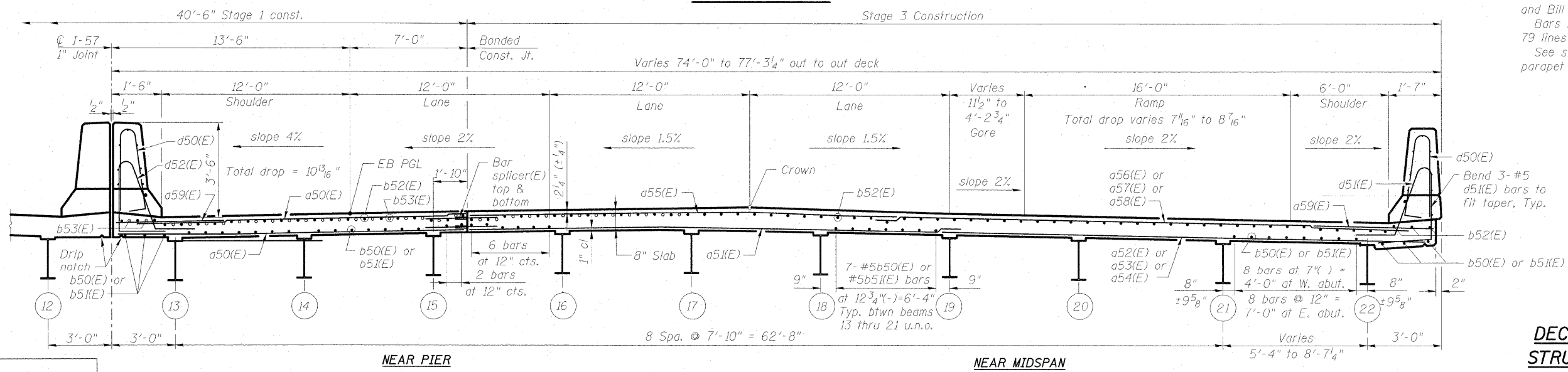
**DETAIL "I"**

**MINIMUM BAR LAP**  
(Slab)  
#5 bar = 2'-7"

**NOTE "S"**  
Cut bars in field to fit skew and use the remainder of bars at other end of deck.

Measured along inside face of parapet typ.

Notes:  
Cut longitudinal reinforcement to clear drainage scuppers.  
See sheet SR-17 of SR-48 for deck details and Bill of Material.  
Bars indicated thus 79 x 6-#5 etc. indicates 79 lines of bars with 6 lengths per line.  
See sheet SR-16 of SR-48 for parapet reinforcement.



**DECK PLAN AND SECTION (NB)**  
**STRUCTURE NO. 046-0146 (S.B.)**  
**& STRUCTURE NO. 046-0147 (N.B.)**

DESIGNED	AWW
CHECKED	PMH
DRAWN	AMV
CHECKED	AWW

**CROSS SECTION**  
(Looking west)

**McDonough Associates Inc.**  
Engineers / Architects  
130 East Randolph Street  
Chicago, Illinois 60601  
(312) 946-8600

SHEET NO. SR-15 SHEETS SR-48	F.A.I. RTE.	SECTION	COUNTY	TOTAL SHEETS	SHEET NO.
	57	(46-2) VBR	KANKAKEE	558	342
CONTRACT NO. 66409					
FED. ROAD DIST. NO. 3 ILLINOIS FED. AID PROJECT					