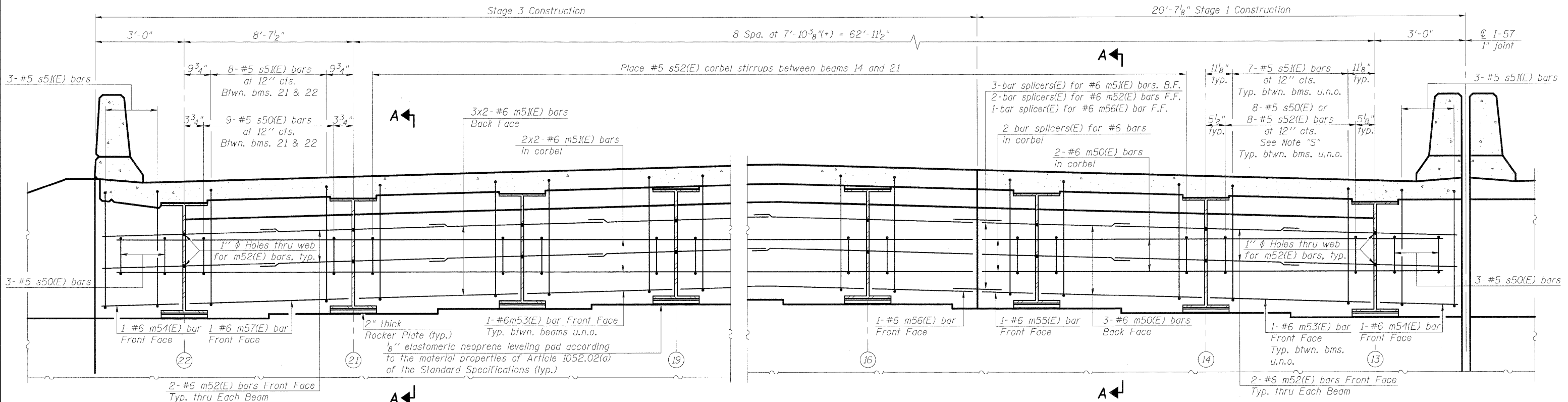
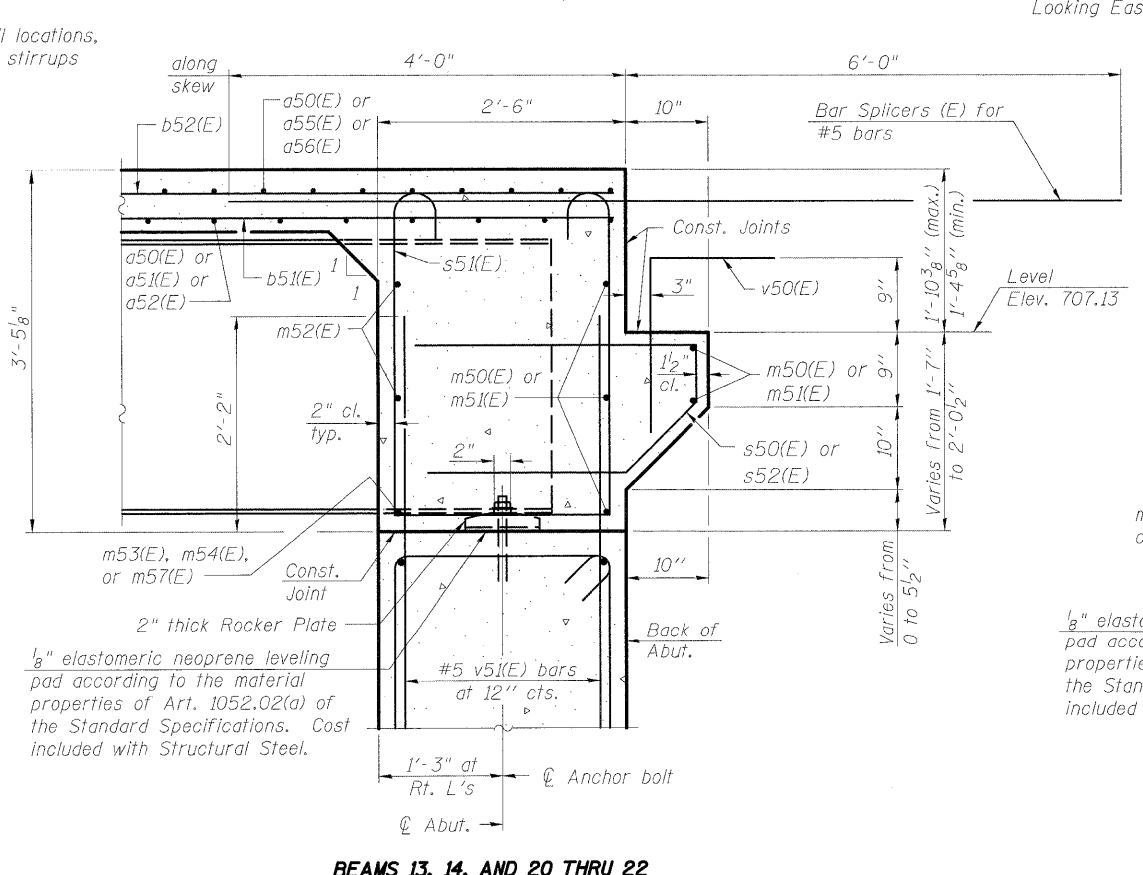


STATE OF ILLINOIS
DEPARTMENT OF TRANSPORTATION

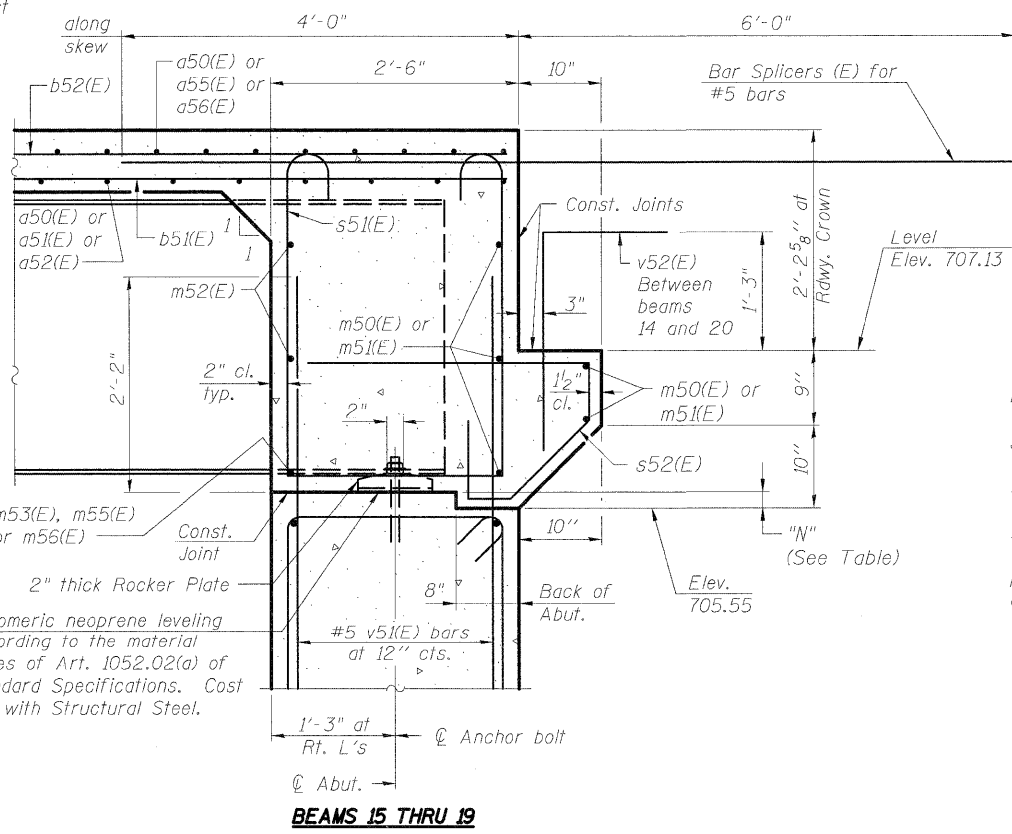


NOTE "S":
Utilize s50(E) corbel stirrups at all locations, unless placement of s52(E) corbel stirrups is indicated.

DIAPHRAGM ELEVATION AT EAST ABUTMENT (NB)



BEAMS 13, 14, AND 20 THRU 22



BEAMS 15 THRU 19

MIN. BAR LAP

#6 bar = 3'-4"

Beam	Notch 'N'
15	5/8"
16	2 3/8"
17	3/2"
18	3 1/2"
19	1 7/8"

Notes:
Reinforcement bars in diaphragm are billed with superstructure on sheet SR-17 of SR-48.
Concrete in diaphragm is included with Concrete Superstructure on sheet SR-17 of SR-48.
For details of bars s50(E), s51(E) & s52(E) see sheet SR-17 of SR-48.
The s50(E), s51(E) & s52(E) bars shall be placed parallel to the beams. Spacing for these bars shall be at right angles to the beams.

**DIAPHRAGM AT EAST ABUTMENT (NB)
STRUCTURE NO. 046-0146 (S.B.)
& STRUCTURE NO. 046-0147 (N.B.)**

DESIGNED	AWW
CHECKED	PMH
DRAWN	AMV
CHECKED	AWW

SECTION A-A
Dimensions at right angles to abutment, except as shown.

McDonough Associates Inc.
Engineers / Architects
130 East Randolph Street
Chicago, Illinois 60601
(312) 946-8600

SHEET NO. SR-21 SHEETS SR-48	F.A.I. RTE.	SECTION	COUNTY	TOTAL SHEETS	SHEET NO.
	57	(46-2) VBR	KANKAKEE	558	348
CONTRACT NO. 66409					
FED. ROAD DIST. NO. 3 ILLINOIS FED. AID PROJECT					