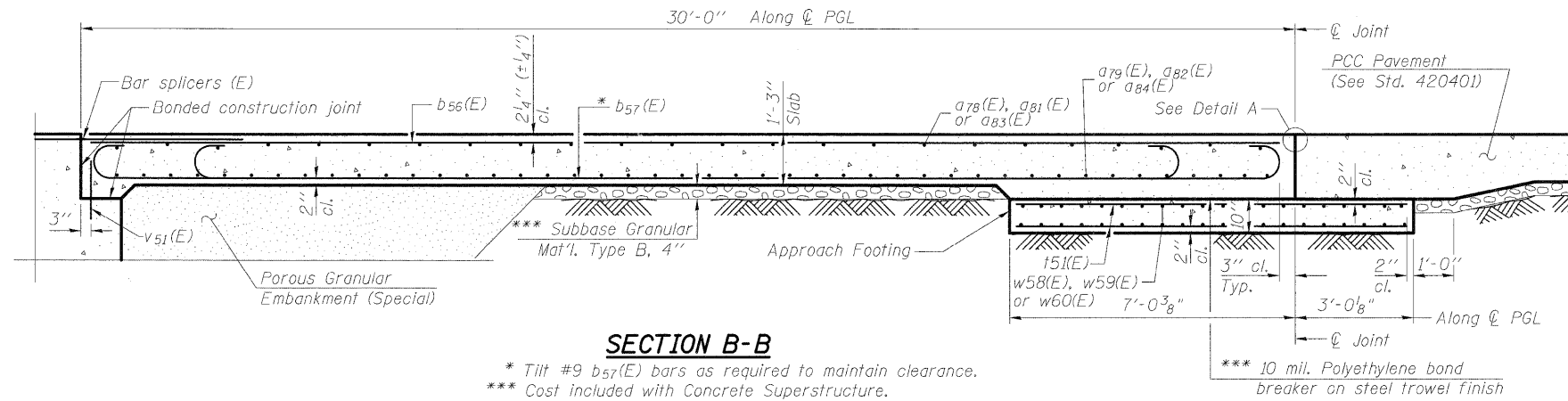


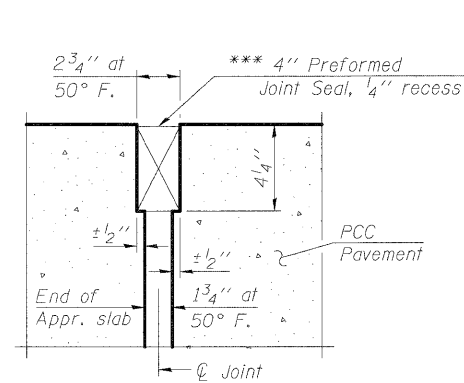
STATE OF ILLINOIS  
DEPARTMENT OF TRANSPORTATION

Notes:  
Approach slab and parapet concrete shall be paid for as Concrete Superstructure.  
Approach footing concrete shall be paid for as Concrete Structures.  
Reinforcement shall be paid for as Reinforcement Bars, Epoxy Coated.  
For v51(E) bar details, see sheets SR-33 & SR-35 of SR-48.  
The approach footing maximum applied service bearing pressure (Qmax) = 2.0 ksf.  
For bar splicer details, see sheet SR-43 of SR-48.  
Cost of excavation for approach footing included with Concrete Structures.  
For Porous Granular Embankment (Special) and drainage treatment details, see sheet SR-2 of SR-48.  
For additional parapet details, see sheet SR-16 of SR-48.



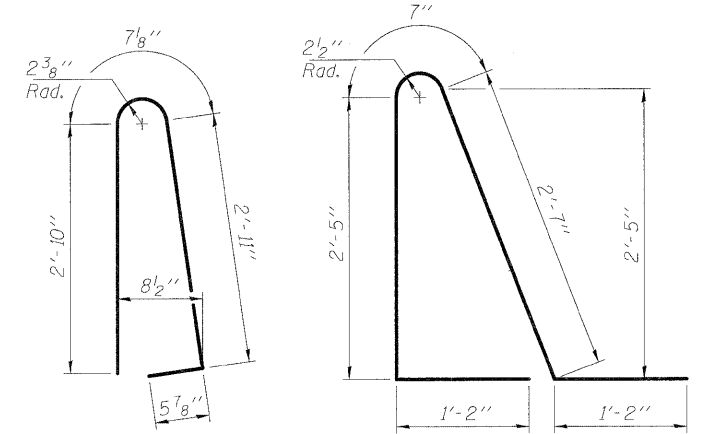
**SECTION B-B**

\* Tilt #9 b57(E) bars as required to maintain clearance.  
\*\*\* Cost included with Concrete Superstructure.



**DETAIL A**

\*\*\* Cost included with Concrete Superstructure.



**BAR d50(E)**

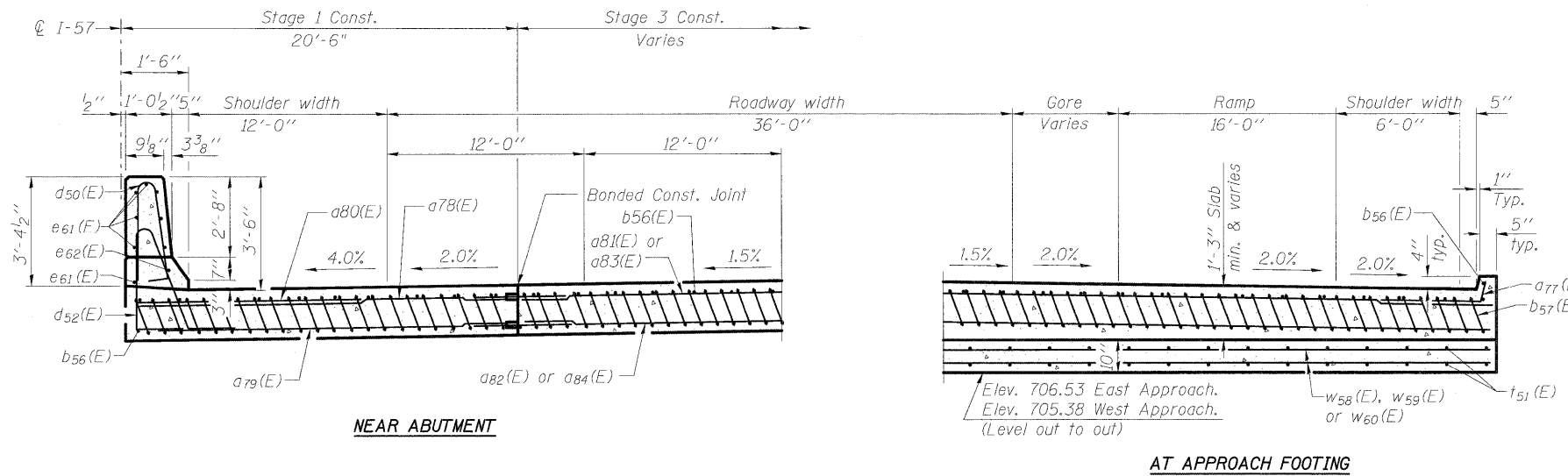
**BAR d52(E)**

**NORTHBOUND APPROACHES  
BILL OF MATERIAL**

Bar	Stage		Size	Length	Shape
	No.	No.			
a77(E)		50	#4	4'-1"	
a78(E)	50		#4	20'-2"	
a79(E)		92	#5	20'-2"	
a80(E)	48		#6	6'-6"	
a81(E)		50	#4	29'-7"	
a82(E)		92	#5	29'-9"	
a83(E)		50	#4	27'-8"	
a84(E)		92	#5	27'-9"	
b56(E)	38	90	#4	29'-8"	
b57(E)	100	264	#9	29'-9"	
d50(F)	68		#5	6'-10"	
d52(E)	68		#5	7'-11"	
e61(E)	28		#4	14'-8"	
e62(E)	2		#8	29'-8"	
e63(E)	2		#4	29'-8"	
t51(E)	88	224	#4	9'-8"	
w58(E)	80		#5	20'-2"	
w59(E)		80	#5	29'-11"	
w60(E)		80	#5	27'-9"	
Concrete Superstructure				Cu. Yd.	245
Concrete Structures				Cu. Yd.	47
Reinforcement Bars, Epoxy Coated				Pound	60,026

\* Includes 8,509 lbs. for Approach Footing. Quantity included with substructure.

**APPROACH SLAB DETAILS (NB)  
STRUCTURE NO. 046-0146 (S.B.)  
& STRUCTURE NO. 046-0147 (N.B.)**

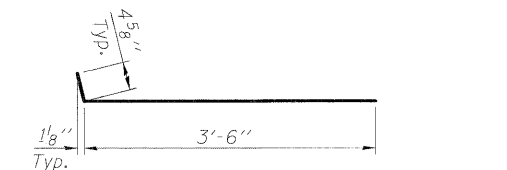


**SECTION C-C**

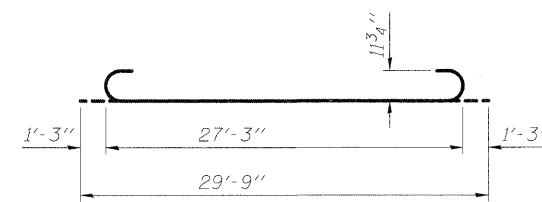
(See Plan for dimensions not shown)

**NEAR ABUTMENT**

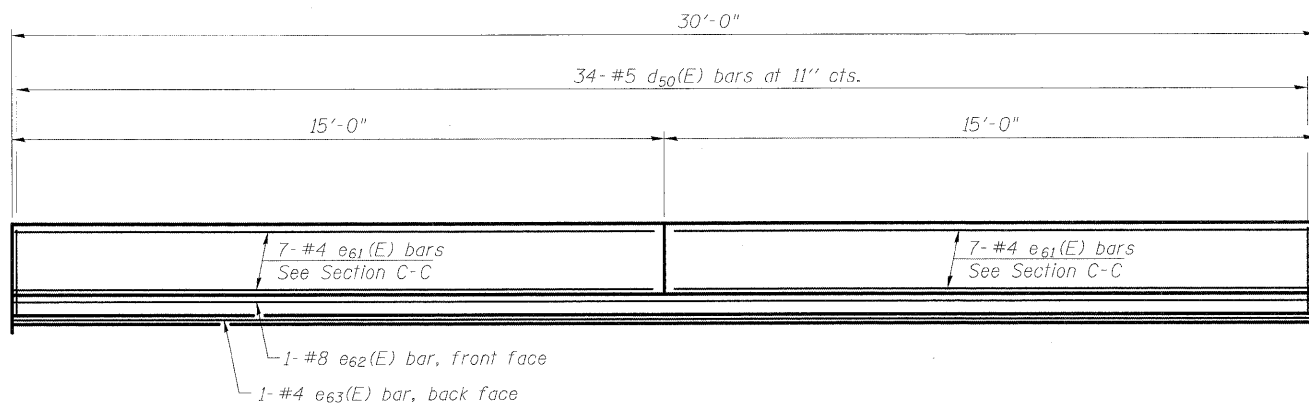
**AT APPROACH FOOTING**



**BAR a77(E)**



**BAR b57(E)**



**VIEW D-D**

West Approach shown, East Approach similar.

DESIGNED	RJ/PMH
CHECKED	MJL
DRAWN	RJ/PMH
CHECKED	MJL



**McDonough Associates Inc.**  
Engineers / Architects  
130 East Randolph Street  
Chicago, Illinois 60601  
(312) 946-8600

SHEET NO. SR-27 SHEETS SR-48	F.A.I. RTE.	SECTION	COUNTY	TOTAL SHEETS	SHEET NO.
	57	(46-2) VBR	KANKAKEE	558	354
CONTRACT NO. 66409					
FED. ROAD DIST. NO. 3 ILLINOIS FED. AID PROJECT					