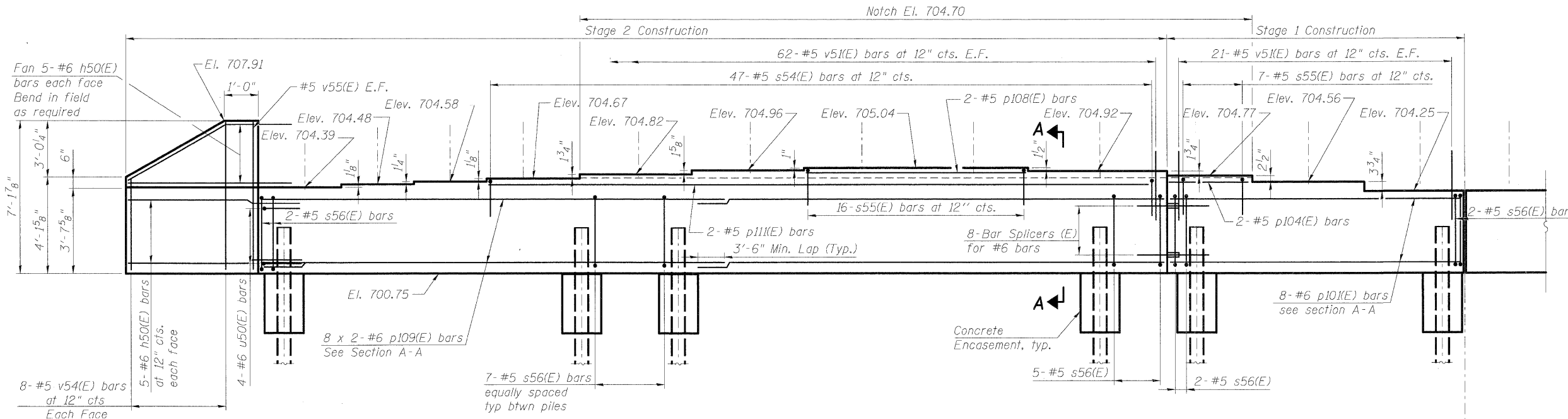
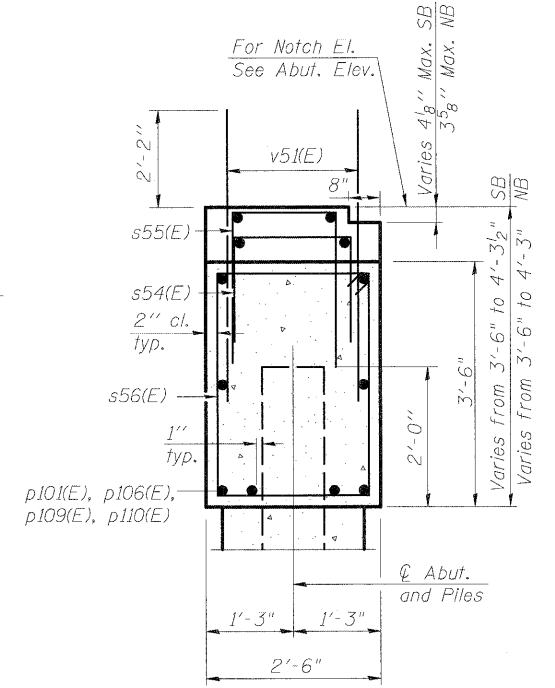


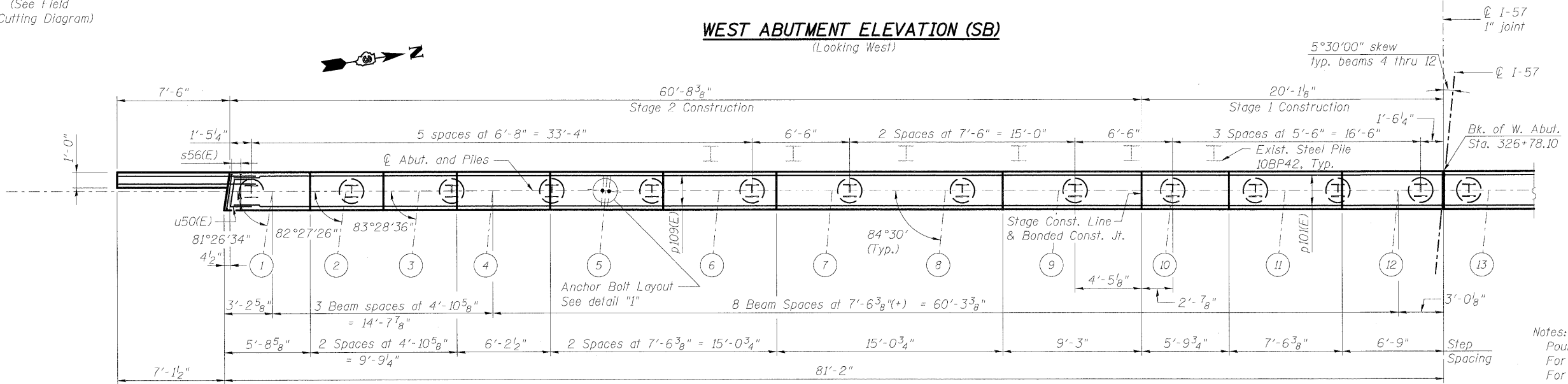
STATE OF ILLINOIS
DEPARTMENT OF TRANSPORTATION



WEST ABUTMENT ELEVATION (SB)
(Looking West)



SECTION A-A



PLAN

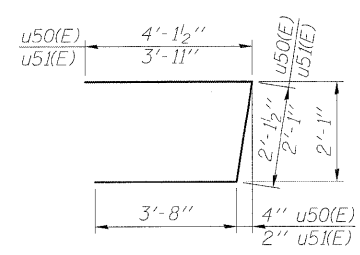
MINIMUM BAR LAP
(Abutment)
#6 bar = 3'-6"

Notes:
Pour steps monolithically with cap.
For details of Bar Splicers, see Sht. SR-43.
For Bill of Material see Sht. SR-35.
For details of piles and Concrete Encasement, see sht. SR-44.

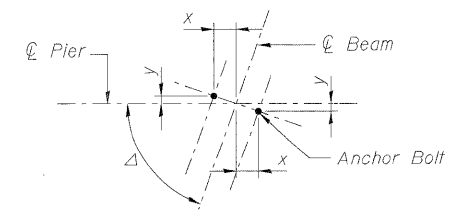
Bars indicated thus 8 x 2 - #6 etc. indicates 8 lines of bars with 2 lengths per line.

PILE DATA

Type:	HP 10 x 57 w/ Pile Shoes
Nominal Required Bearing:	453 kips
Allowable Resistance Available:	151 kips
Est. Length:	39 ft.
No. Production Piles:	24
No. Test Piles:	1



BARS u50(E) & u51(E)



Beam No.	Δ	x	y
1	81°26'34"	2 ⁵ / ₈ "	3 ³ / ₈ "
2	82°27'26"	2 ⁵ / ₈ "	3 ³ / ₈ "
3	83°28'36"	2 ⁵ / ₈ "	1 ¹ / ₄ "
4 thru 12	84°30'00"	2 ⁵ / ₈ "	1 ¹ / ₄ "

DETAIL '1'
ANCHOR BOLT LAYOUT

DESIGNED	PMH
CHECKED	MJL
DRAWN	PMH
CHECKED	MJL

McDonough Associates Inc.
Engineers / Architects
130 East Randolph Street
Chicago, Illinois 60601
(312) 946-8600

SHEET NO. SR-34 SHEETS SR-48	F.A.I. RTE.	SECTION	COUNTY	TOTAL SHEETS	SHEET NO.
	57	(46-2) VBR	KANKAKEE	558	361
CONTRACT NO. 66409					
FED. ROAD DIST. NO. 3 ILLINOIS FED. AID PROJECT					

WEST ABUTMENT & DETAILS (SB)
STRUCTURE NO. 046-0146 (S.B.)
& STRUCTURE NO. 046-0147 (N.B.)