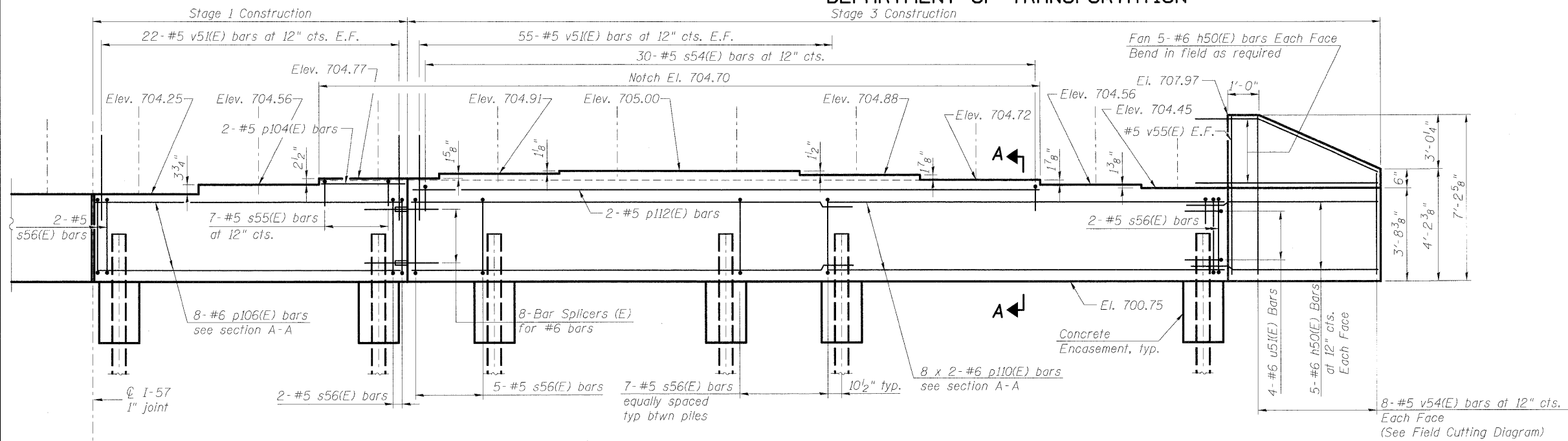
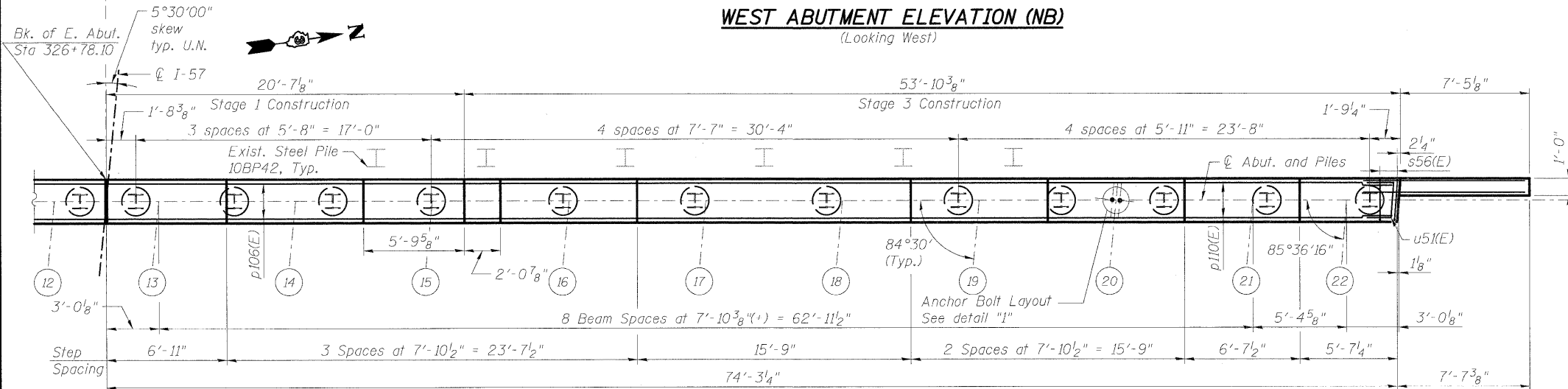


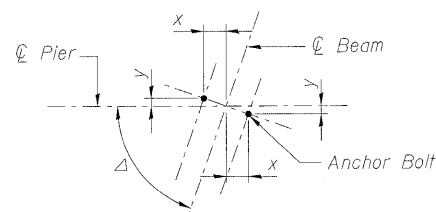
STATE OF ILLINOIS  
DEPARTMENT OF TRANSPORTATION



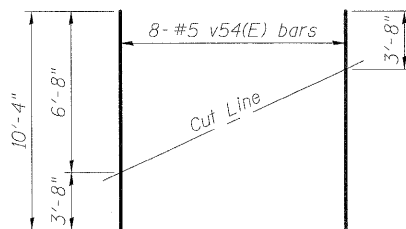
**WEST ABUTMENT ELEVATION (NB)**  
(Looking West)



**PLAN**



**DETAIL "1"**  
**ANCHOR BOLT LAYOUT**

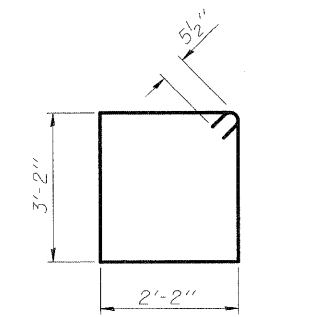


**FIELD CUTTING DIAGRAM**

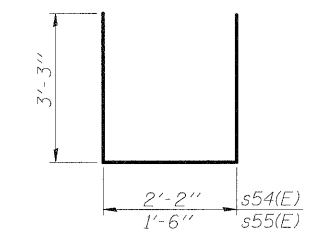
Order v54(E) full length. Cut as shown and use remainder of bars in opposite face.

**WEST ABUTMENT BILL OF MATERIAL**

Bar	Stage 1 No.	Stage 2 No.	Stage 3 No.	Size	Length	Shape	
h50(E)		20	20	#6	10'-8"	—	
p101(E)	8			#6	19'-9"	—	
p104(E)	2			#5	5'-5"	—	
p106(E)	8			#6	20'-3"	—	
p108(E)		2		#5	14'-8"	—	
p109(E)		16		#6	32'-5"	—	
p110(E)			16	#6	28'-8"	—	
p111(E)	2			#5	45'-3"	—	
p112(E)		2		#5	41'-1"	—	
s54(E)		17	30	#5	8'-8"	□	
s55(E)	14	16		#5	8'-0"	□	
s56(E)	50	63	56	#5	11'-7"	□	
u50(E)		4		#6	9'-11"	—	
u51(E)			4	#6	9'-8"	—	
v51(E)	86	124	110	#5	4'-4"	—	
v54(E)		8	8	#5	10'-4"	—	
v55(E)		2	2	#5	6'-9"	—	
Structure Excavation						Cu. Yd.	260
Reinforcement Bars, Epoxy Coated						Pound	7,570
Concrete Structures						Cu. Yd.	60
Concrete Encasement						Cu. Yd.	9
Furnishing Steel Piles, HP 10x57						Foot	936
Driving Piles						Foot	936
Test Pile Steel HP 10 x 57						Each	1
Pile Shoes						Each	25



**BARS s56(E)**



**BAR s54(E) & s55(E)**

Notes:  
Pour steps monolithically with cap.  
For details of Bar Splicers, see Sht. SR-43.  
For details of piles and Concrete Encasement, see Sht. SR-44.  
Bars indicated thus 8 x 2-#6 etc. indicates 8 lines of bars with 2 lengths per line.  
For Section A-A see Sht. SR-34.

**WEST ABUTMENT & DETAILS (NB)**  
**STRUCTURE NO. 046-0146 (S.B.)**  
**& STRUCTURE NO. 046-0147 (N.B.)**

DESIGNED	PMH
CHECKED	MJL
DRAWN	PMH
CHECKED	MJL

SHEET NO. SR-35 SHEETS SR-48	F.A.I. RTE.	SECTION	COUNTY	TOTAL SHEETS	SHEET NO.
	57	(46-2) VBR	KANKAKEE	558	362
CONTRACT NO. 66409					
FED. ROAD DIST. NO. 3 ILLINOIS FED. AID PROJECT					

**McDonough Associates Inc.**  
Engineers / Architects  
130 East Randolph Street  
Chicago, Illinois 60601  
(312) 946-8600