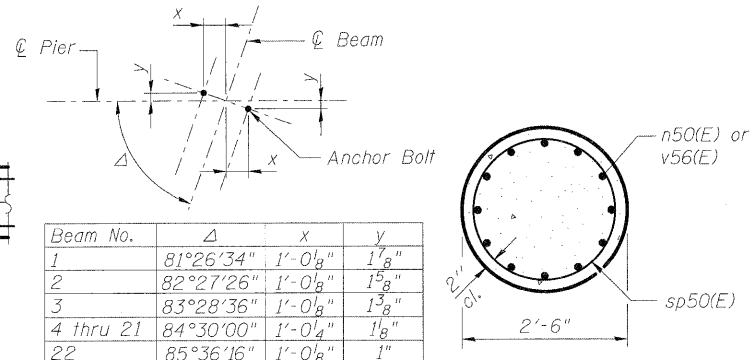
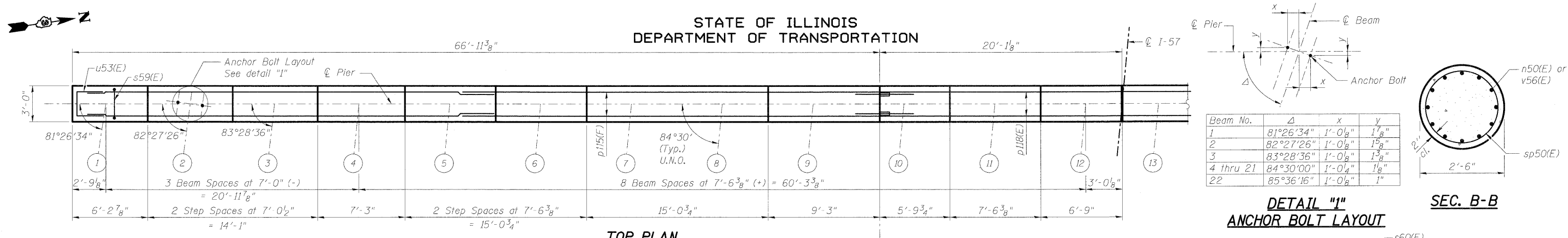
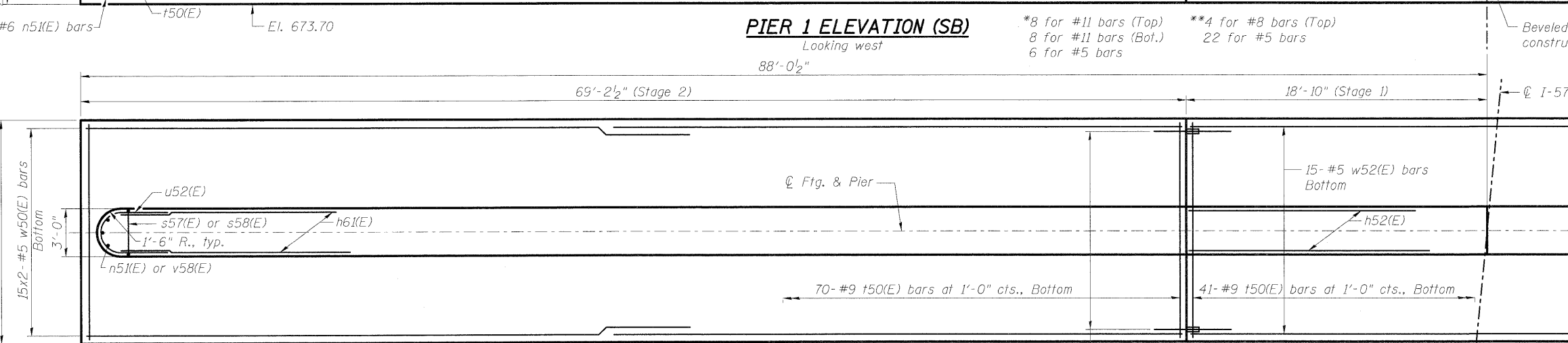
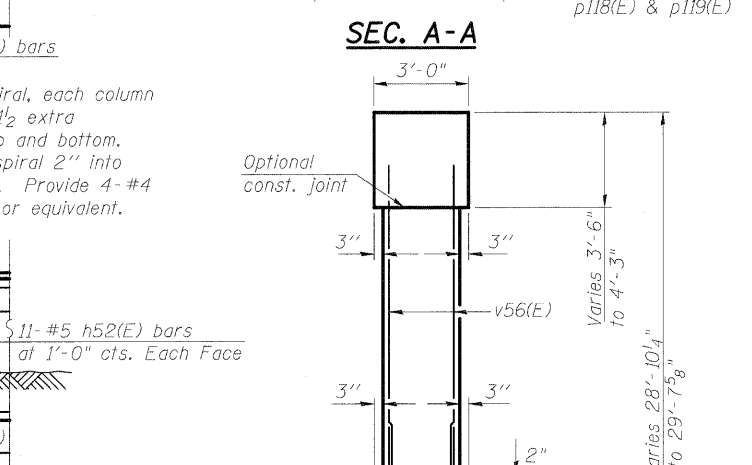
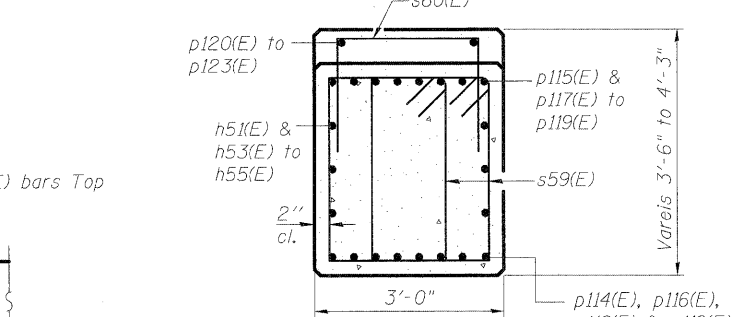
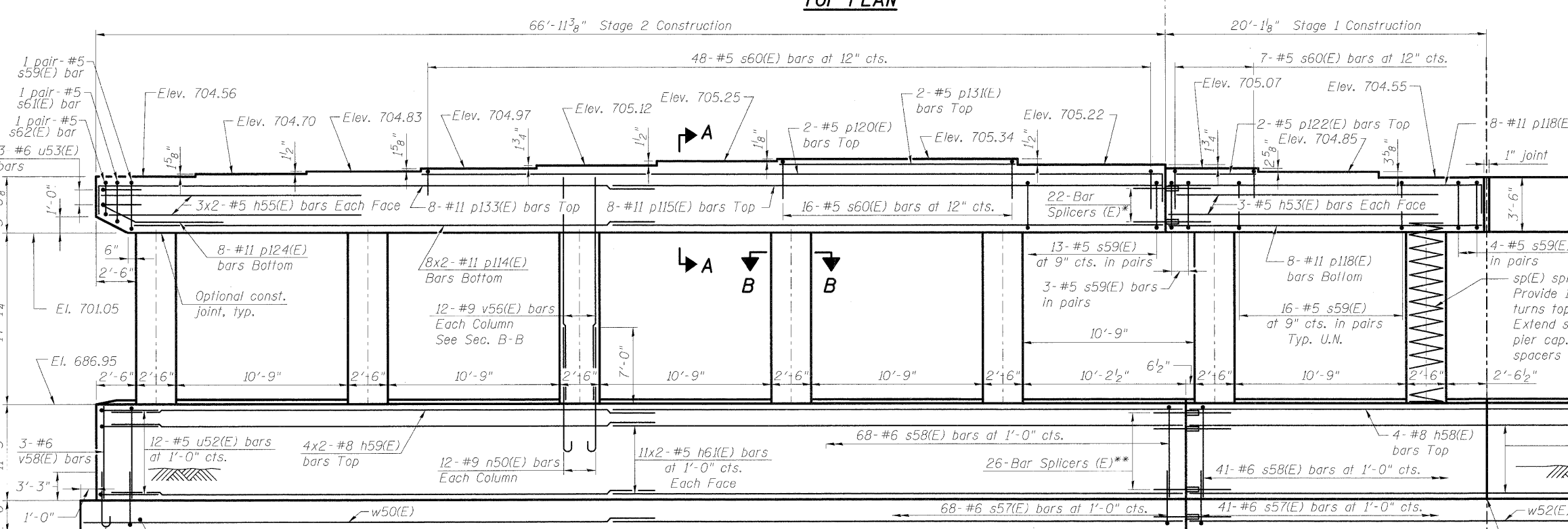


STATE OF ILLINOIS  
DEPARTMENT OF TRANSPORTATION



Beam No.	Δ	x	y
1	81°26'34"	1'-0 1/8"	1 1/8"
2	82°27'26"	1'-0 1/8"	1 1/8"
3	83°28'36"	1'-0 1/8"	1 1/8"
4 thru 21	84°30'00"	1'-0 1/4"	1 1/8"
22	85°36'16"	1'-0 1/8"	1"



DESIGNED	MGB
CHECKED	PMH
DRAWN	PMH
CHECKED	MJL

**MINIMUM BAR LAP**  
(Pier)

Top bars	Other bars
#5 bar = 2'-11"	#5 bar = 2'-7"
#8 bar = 6'-2"	#6 bar = 3'-1"
#11 bar = 15'-1"	#9 bar = 6'-10"
	#11 bar = 13'-4"

**FOOTING PLAN**  
Maximum Applied Bearing Pressure = 2.86 ksf

Notes:  
Space reinforcement in cap to miss anchor bolts.  
Pour steps monolithically with cap.  
For Bill of Material, see sheet SR-38 of SR-48.  
Work with sheet SR-38.

**McDonough Associates Inc.**  
Engineers / Architects  
130 East Randolph Street  
Chicago, Illinois 60601  
(312) 946-8600

SHEET NO.	F.A.I. RTE.	SECTION	COUNTY	TOTAL SHEETS	SHEET NO.
SR-37	57	(46-2) VBR	KANKAKEE	558	364
SHEETS	CONTRACT NO. 66409				
SR-48	FED. ROAD DIST. NO. 3 ILLINOIS FED. AID PROJECT				