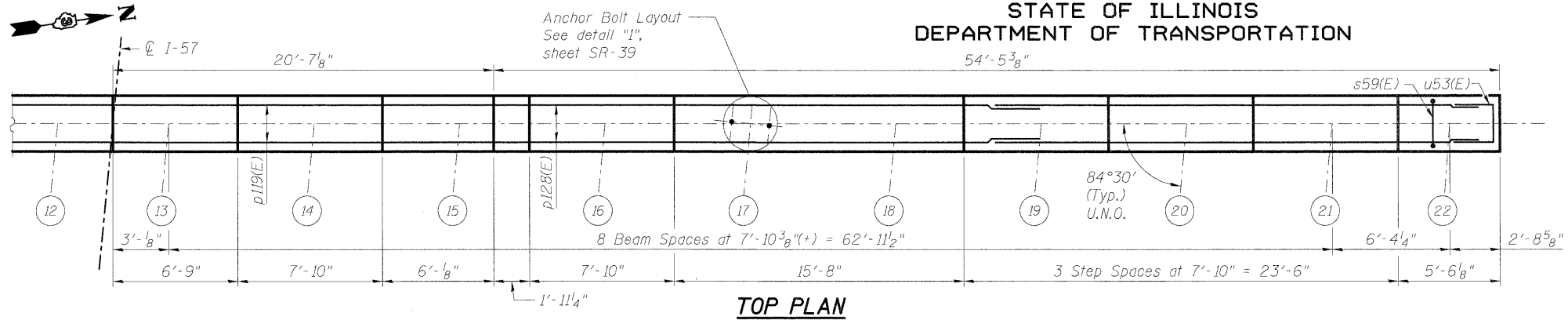
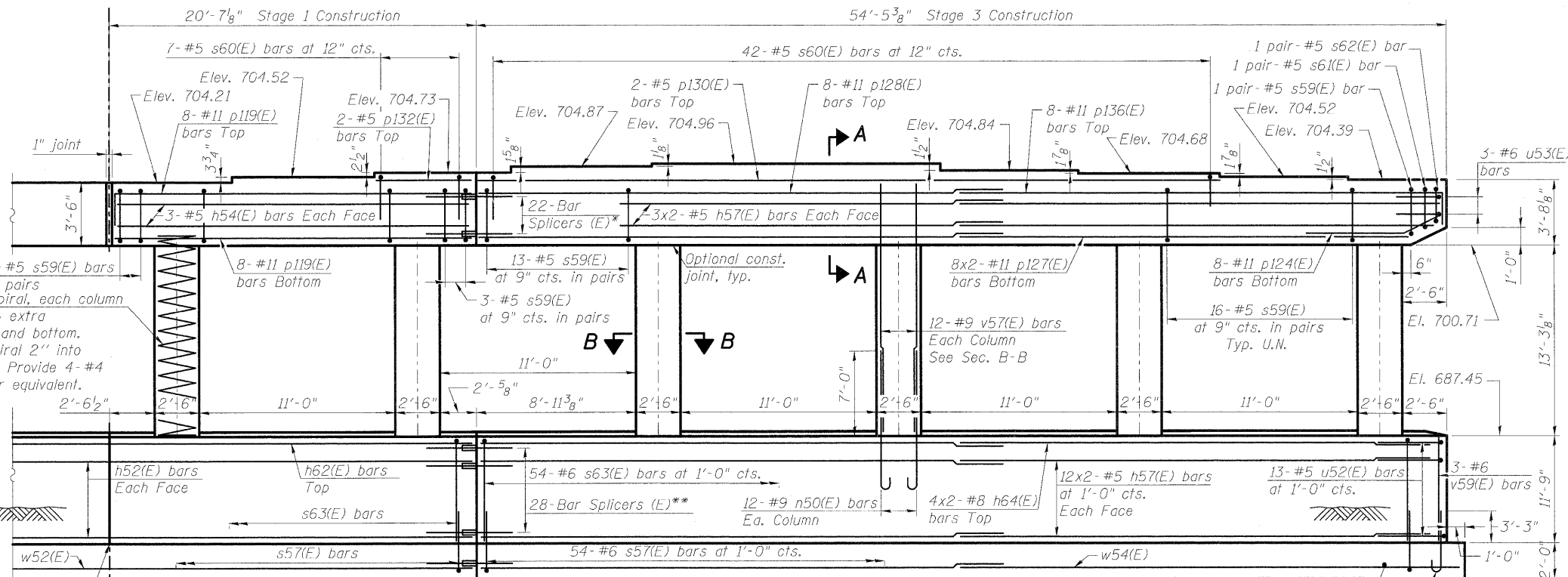


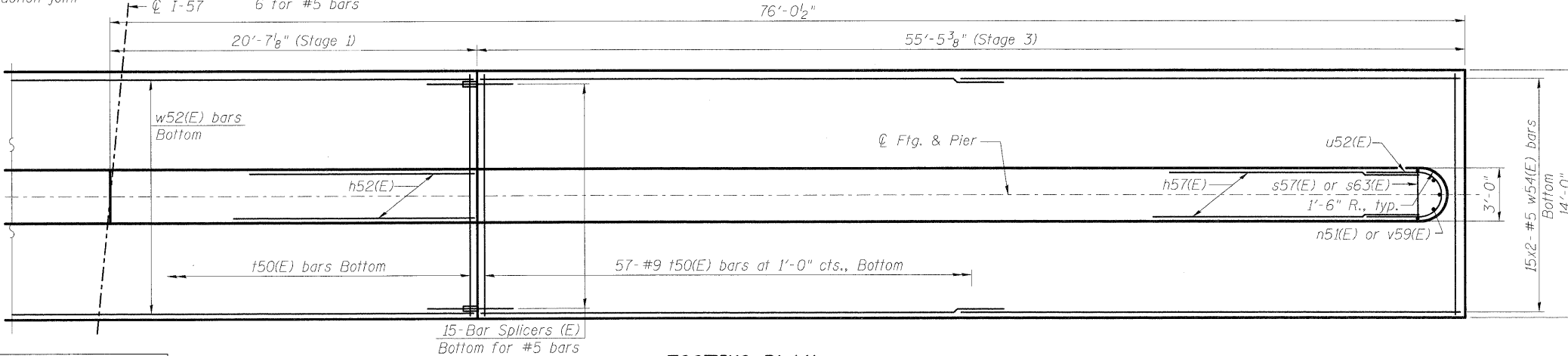
STATE OF ILLINOIS
DEPARTMENT OF TRANSPORTATION



TOP PLAN



PIER 2 ELEVATION (NB)



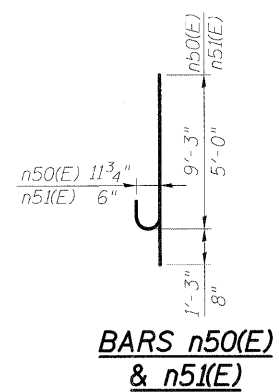
FOOTING PLAN

Maximum Applied Service Bearing Pressure = 2.86 ksf

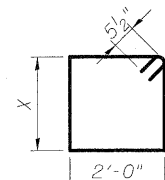
Notes:

Space reinforcement in cap to miss anchor bolts.
Pour steps monolithically with cap.
For sections A-A, B-B & End View, see sheet SR-39 of SR-48.
Work with sheet SR-39.

DESIGNED	MGB
CHECKED	PMH
DRAWN	PMH
CHECKED	MJL



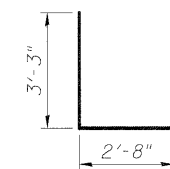
BARS n50(E) & n51(E)



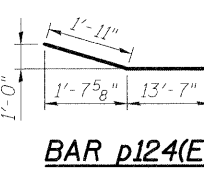
BARS s59(E), s61(E) & s62(E)

X DIMENSIONS

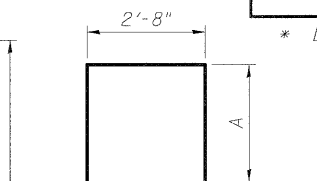
Bar	X
s57(E)	3'-2"
s59(E)	3'-2"
s61(E)	2'-8"
s62(E)	2'-2"



BAR u53(E)



BAR p124(E)



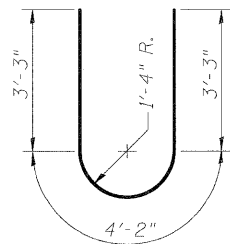
BARS s57(E), s60(E) & s63(E)

A DIMENSIONS

Bar	A
s57(E)	5'-0"
s60(E)	3'-3"
s63(E)	11'-5"

BARS p118(E), p119(E), p135(E) & p136(E)

p118(E)	19'-8"
p119(E)	20'-2"
p135(E)	39'-5"
p136(E)	34'-10"



BAR u52(E)

**PIER 2 (NB)
STRUCTURE NO. 046-0146 (S.B.)
& STRUCTURE NO. 046-0147 (N.B.)**

PIER 2 BILL OF MATERIAL						
Bar	Stage 1 No.	Stage 2 No.	Stage 3 No.	Size	Length	Shape
h52(E)	24			#5	39'-1"	U
h53(E)	6			#5	19'-8"	U
h54(E)	6			#5	20'-2"	U
h56(E)		12		#5	33'-4"	U
h57(E)			60	#5	28'-10"	U
h62(E)	4			#8	39'-1"	U
h63(E)		8		#8	34'-10"	U
h64(E)			8	#8	29'-9"	U
h65(E)			48	#5	33'-2"	U
n50(E)	48	60	48	#9	10'-6"	U
n51(E)		3	3	#6	5'-8"	U
p118(E)	16			#11	21'-8"	U
p119(E)	16			#11	22'-2"	U
p122(E)	2			#5	5'-5"	U
p124(E)		8	8	#11	15'-6"	U
p125(E)		16		#11	37'-6"	U
p126(E)		8		#11	39'-5"	U
p127(E)			16	#11	32'-11"	U
p128(E)			8	#11	34'-10"	U
p129(E)	2			#5	45'-9"	U
p130(E)			2	#5	40'-9"	U
p131(E)		2		#5	14'-8"	U
p132(E)	2			#5	5'-8"	U
p135(E)		8		#11	41'-5"	U
p136(E)			8	#11	36'-10"	U
s57(E)	41	64	54	#6	12'-8"	U
s59(E)	92	144	124	#5	11'-3"	U
s60(E)	14	63	42	#5	9'-2"	U
s61(E)		2	2	#5	10'-3"	U
s62(E)		2	2	#5	9'-3"	U
s63(E)	41	64	54	#6	25'-6"	U
*sp50(E)	4	5	4	#4	13'-6"	U
t50(E)	41	67	57	#9	13'-8"	U
u52(E)		13	13	#5	10'-8"	U
u53(E)		3	3	#6	9'-2"	U
v57(E)	48	60	48	#9	14'-11"	U
v59(E)		3	3	#6	11'-5"	U
w52(E)	15			#5	39'-1"	U
w53(E)		30		#5	34'-4"	U
w54(E)			30	#5	29'-2"	U
Braced Excavation				Cu. Yd.	631	
Reinforcement Bars, Epoxy Coated				Pound	66,855	
Concrete Structures				Cu. Yd.	478	

* Length is height of spiral.

McDonough Associates Inc.
Engineers / Architects
130 East Randolph Street
Chicago, Illinois 60601
(312) 946-8600

SHEET NO. SR-40 SHEETS SR-48	F.A.I. RTE.	SECTION	COUNTY	TOTAL SHEETS	SHEET NO.
	57	(46-2) VBR	KANKAKEE	558	367
CONTRACT NO. 66409					
FED. ROAD DIST. NO. 3 ILLINOIS FED. AID PROJECT					