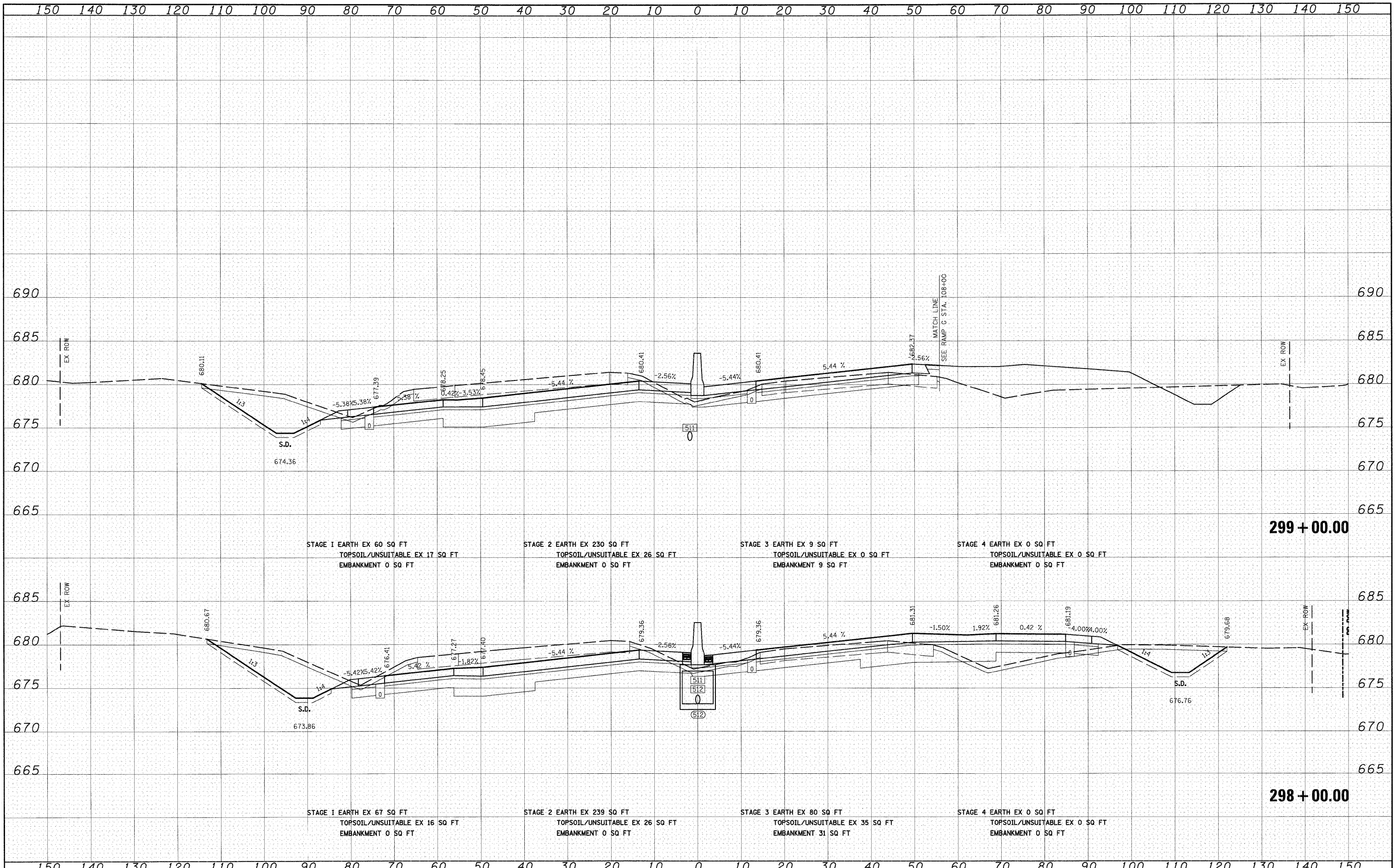


FINAL SURVEY	DATE
SURVEYED	BY
PLOTTED	
NOTE BOOK	
AREAS	
CHECKED	
NO.	

ORIGINAL SURVEY	DATE
SURVEYED	BY
PLOTTED	
NOTE BOOK	
AREAS	
CHECKED	
NO.	



STAGE 1 EARTH EX 60 SQ FT  
TOPSOIL/UNSUITABLE EX 17 SQ FT  
EMBANKMENT 0 SQ FT

STAGE 2 EARTH EX 230 SQ FT  
TOPSOIL/UNSUITABLE EX 26 SQ FT  
EMBANKMENT 0 SQ FT

STAGE 3 EARTH EX 9 SQ FT  
TOPSOIL/UNSUITABLE EX 0 SQ FT  
EMBANKMENT 9 SQ FT

STAGE 4 EARTH EX 0 SQ FT  
TOPSOIL/UNSUITABLE EX 0 SQ FT  
EMBANKMENT 0 SQ FT

STAGE 1 EARTH EX 67 SQ FT  
TOPSOIL/UNSUITABLE EX 16 SQ FT  
EMBANKMENT 0 SQ FT

STAGE 2 EARTH EX 239 SQ FT  
TOPSOIL/UNSUITABLE EX 26 SQ FT  
EMBANKMENT 0 SQ FT

STAGE 3 EARTH EX 80 SQ FT  
TOPSOIL/UNSUITABLE EX 35 SQ FT  
EMBANKMENT 31 SQ FT

STAGE 4 EARTH EX 0 SQ FT  
TOPSOIL/UNSUITABLE EX 0 SQ FT  
EMBANKMENT 0 SQ FT

FILE NAME =  
I:\Dgn\sheets\ks021.dgn

USER NAME = EricG  
PLOT SCALE = 1:10  
PLOT DATE = 12/21/2010

DESIGNED - JCL  
DRAWN - JCL  
CHECKED - EUG  
DATE - 12/17/10

REVISED -  
REVISED -  
REVISED -  
REVISED -

STATE OF ILLINOIS  
DEPARTMENT OF TRANSPORTATION

I-57 CROSS SECTIONS

SCALE: 1"=10'H; 1"=5'V SHEET NO. 13 OF 53 SHEETS STA. 298+00.00 TO STA. 299+00.00

F.A.I. RTE.	SECTION	COUNTY	TOTAL SHEETS	SHEET NO.
57	(46-2) I, HBR, VBR	KANKAKEE	558	464
XS-157-13			CONTRACT NO. 66409	
FED. ROAD DIST. NO. 3 ILLINOIS FED. AID PROJECT				