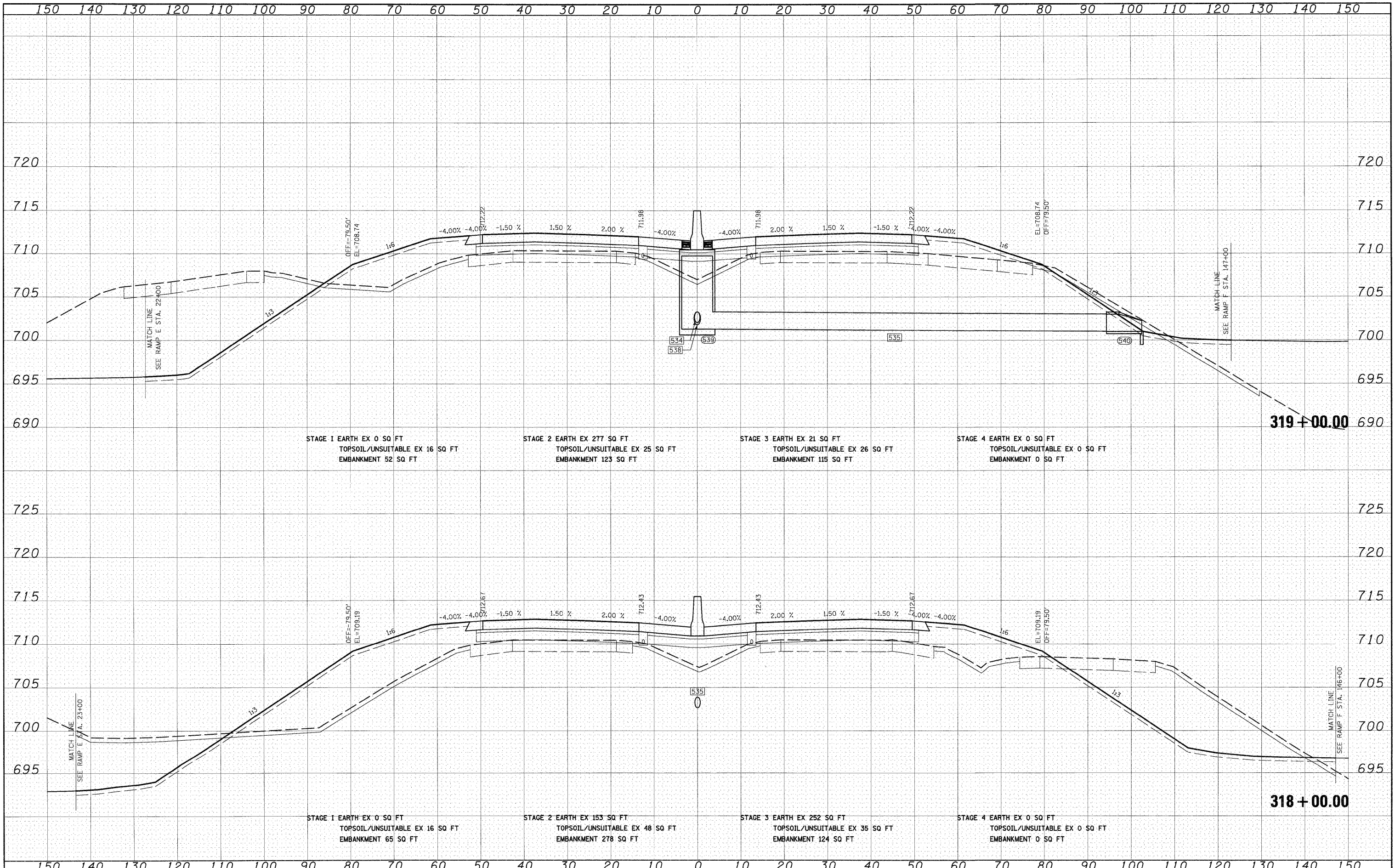


FINAL	DATE
SURVEYED	BY
PLOTTED	
NOTE BOOK	
AREAS CHECKED	
NO.	

ORIGINAL	DATE
SURVEYED	BY
PLOTTED	
NOTE BOOK	
AREAS CHECKED	
NO.	



FILE NAME =	USER NAME = Erja06	DESIGNED - JCL	REVISED -	STATE OF ILLINOIS DEPARTMENT OF TRANSPORTATION	I-57 CROSS SECTIONS SCALE: 1"=10'H; 1"=5'V SHEET NO. 27 OF 53 SHEETS STA. 318+00.00 TO STA. 319+00.00	F.A.I. RTE.	SECTION	COUNTY	TOTAL SHEETS	SHEET NO.
ts\dgn\sheets\ks021.dgn		DRAWN - JCL	REVISED -			57	(46-2) I, HBR, VBR	KANKAKEE	558	478
PLOT SCALE = 1:10		CHECKED - E.JG	REVISED -			XS-157-27		CONTRACT NO. 66409		
PLOT DATE = 12/21/2010		DATE - 12/17/10	REVISED -			FED. ROAD DIST. NO. 3 ILLINOIS FED. AID PROJECT				