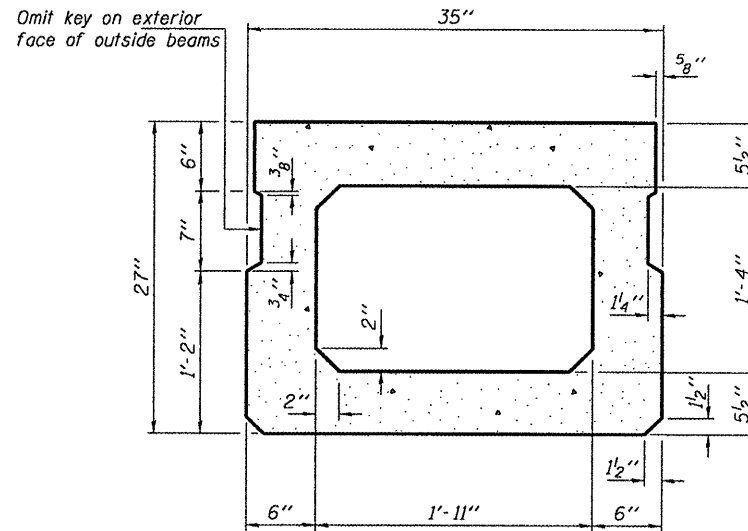
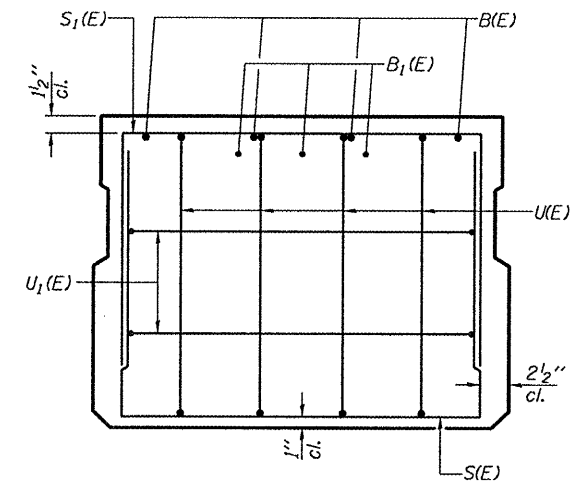


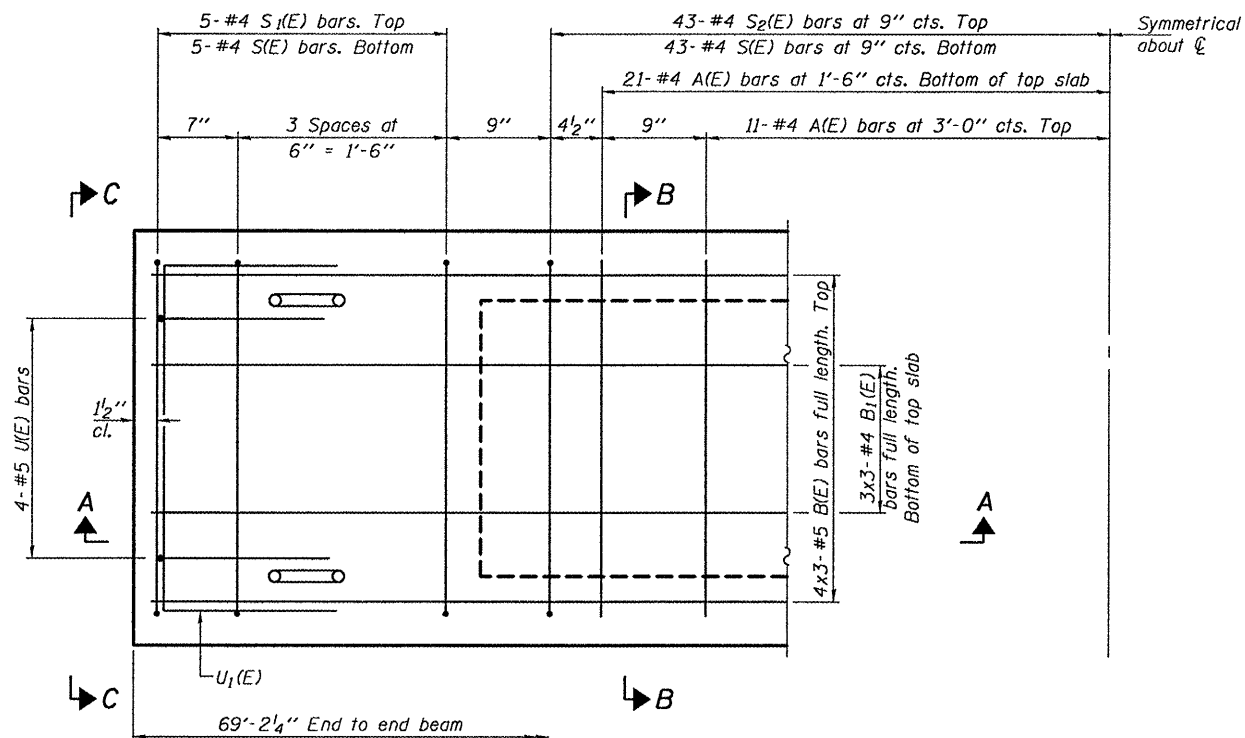
SECTION A-A



SECTION B-B
(Showing dimensions)

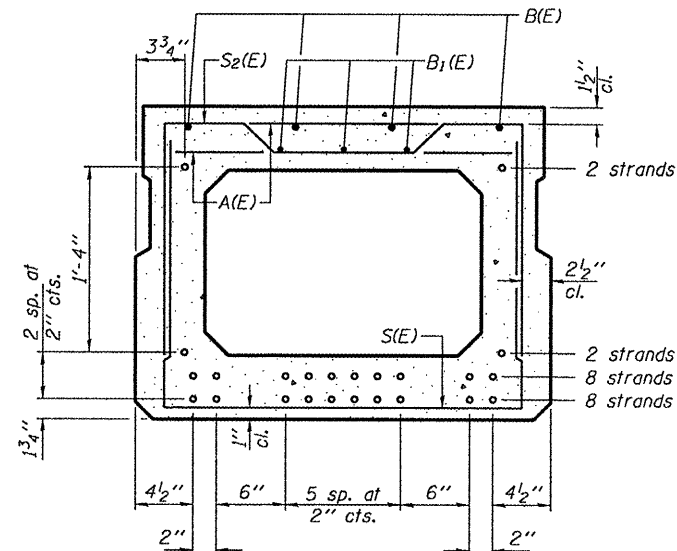


VIEW C-C



PLAN VIEW

Note: Spacing of S(E) and S2(E) bars may be adjusted up to 4" in the immediate area of the transverse tie diaphragms to miss the block outs for the transverse ties.



SECTION B-B

(Showing reinforcement and permissible strand locations)
Note: Place the number of strands specified in each row symmetrically about the centerline of beam in the permissible strand locations shown.

BAR LIST
ONE BEAM ONLY
(For information only)

Bar	No.	Size	Length	Shape
A(E)	64	#4	2'-7"	—
B(E)	12	#5	24'-8"	—
B1(E)	9	#4	24'-4"	—
S(E)	96	#4	6'-4"	U
S1(E)	10	#4	5'-10"	U
S2(E)	86	#4	6'-1"	U
U(E)	8	#5	4'-6"	U
U1(E)	4	#4	4'-11"	U

Note: See sheet 3 of 4 for additional details and Bill of Material.

Bars indicated thus 4x3-#5 etc. indicates 4 lines of bars with 3 lengths per line.

MINIMUM BAR LAP

#4 bar = 2'-0"
#5 bar = 2'-6"

DESIGNED - ATH
CHECKED - GGE
DRAWN - Kyle M. Steffen
CHECKED - ATH GGE

EXAMINED
PASSED
ACTING ENGINEER OF STRUCTURAL SERVICES
ACTING ENGINEER OF BRIDGES AND STRUCTURES

DATE - MARCH 15, 2011

STATE OF ILLINOIS
DEPARTMENT OF TRANSPORTATION

PPC DECK BEAM DETAILS
SN 046-0107

SHEET NO. 2 OF 4 SHEETS

F.A.U. RTE. 6188	SECTION (39C-BR1)	COUNTY KANKAKEE	TOTAL SHEETS 9	SHEET NO. 7
			CONTRACT NO. 66B23	
ILLINOIS FED. AID PROJECT				