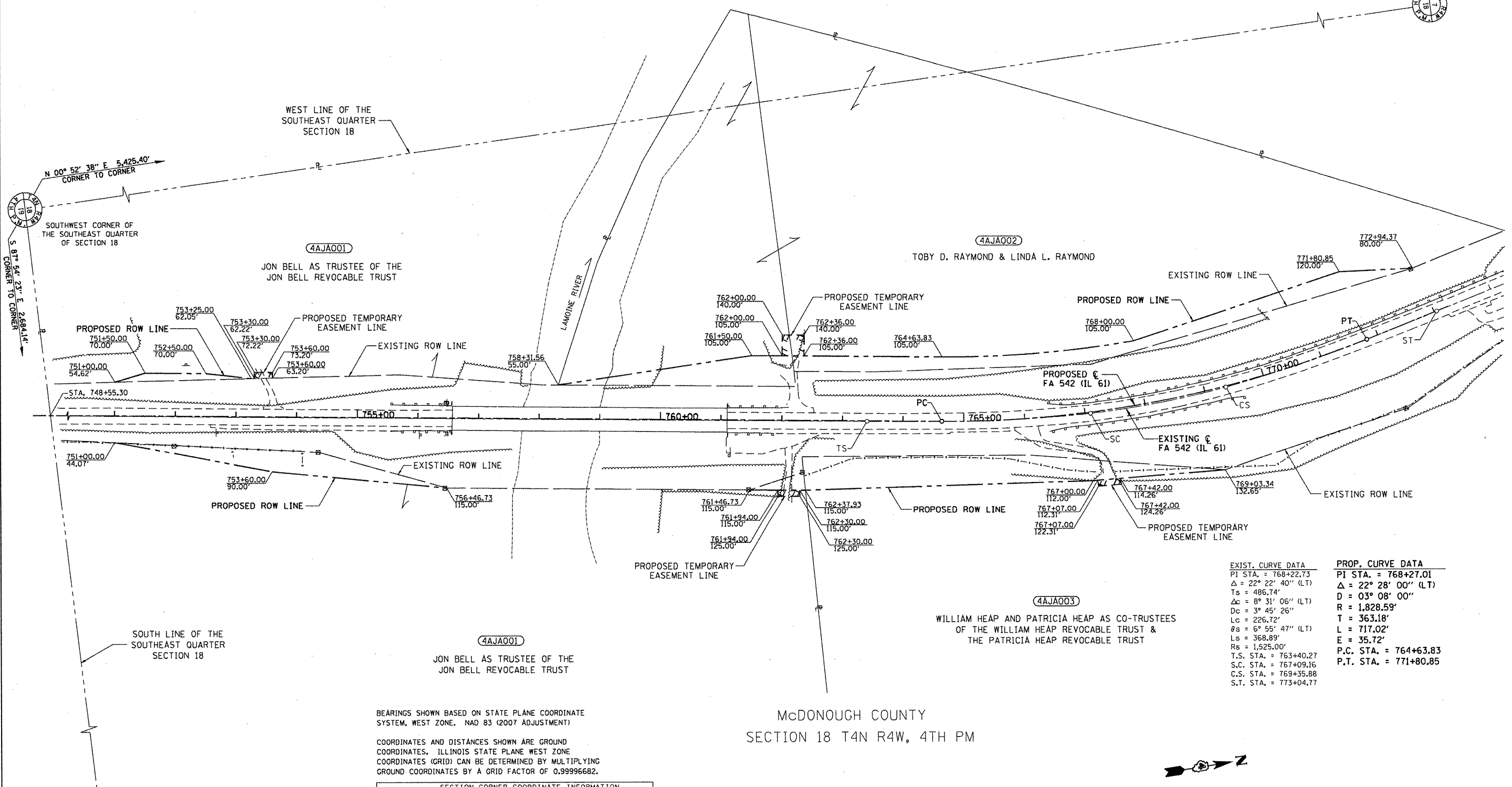
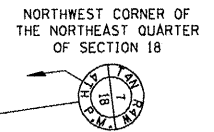


LEGEND

- PROPOSED TEMPORARY EASEMENT LINE
- PROPOSED RIGHT OF WAY LINE
- EXISTING RIGHT OF WAY LINE

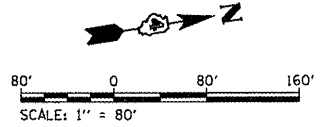


EXIST. CURVE DATA	PROP. CURVE DATA
PI STA. = 768+22.73	PI STA. = 768+27.01
$\Delta = 22^\circ 22' 40''$ (LT)	$\Delta = 22^\circ 28' 00''$ (LT)
Ts = 486.74'	D = 03° 08' 00"
$\Delta c = 8^\circ 31' 06''$ (LT)	R = 1,828.59'
Dc = 3' 45' 26"	T = 363.18'
Lc = 226.72'	L = 717.02'
$\theta s = 6^\circ 55' 47''$ (LT)	E = 35.72'
Ls = 368.89'	P.C. STA. = 764+63.83
Rs = 1,525.00'	P.T. STA. = 771+80.85
T.S. STA. = 763+40.27	
S.C. STA. = 767+09.16	
C.S. STA. = 769+35.88	
S.T. STA. = 773+04.77	

BEARINGS SHOWN BASED ON STATE PLANE COORDINATE SYSTEM, WEST ZONE, NAD 83 (2007 ADJUSTMENT)

COORDINATES AND DISTANCES SHOWN ARE GROUND COORDINATES, ILLINOIS STATE PLANE WEST ZONE COORDINATES (GRID) CAN BE DETERMINED BY MULTIPLYING GROUND COORDINATES BY A GRID FACTOR OF 0.99996682.

SECTION CORNER COORDINATE INFORMATION			
SECTION CORNER	NORTH	EAST	
SE CORNER SECTION 18	1334226.427	2095411.397	
SW CORNER, SE 1/4, SECTION 18	1334324.484	2092729.044	
NW CORNER, NE 1/4, SECTION 18	1339749.248	2092812.099	



FILE NAME	USER NAME = gjameson	DESIGNED -	REVISED -
1:\jobs\dot.d-4\7826.3\cadd\cadd sheets\0468482-SHT-RDW PLAN.dgn		DRAWN - JWD	REVISED -
	PLOT SCALE = 1/8" = 160.0000' / IN.	CHECKED - GLW	REVISED -
	PLOT DATE = 12/21/2010	DATE - 05/07/2010	REVISED -

STATE OF ILLINOIS  
DEPARTMENT OF TRANSPORTATION

RIGHT OF WAY PLANS			
PROJECT	JOB NO.	SECTION	TOTAL SHEETS
STA. 751+00 TO STA. 772+94.37	R-94-008-09	105BR-1	117
SHEET NO. 1 OF 1 SHEETS			40

F.A. RTE.	SECTION	COUNTY	TOTAL SHEETS	SHEET NO.
542	105BR-1	McDONOUGH	117	40
CONTRACT NO. 68482				
FED. ROAD DIST. NO. ILLINOIS FED. AID PROJECT				