

STATE OF ILLINOIS
DEPARTMENT OF TRANSPORTATION
DIVISION OF HIGHWAYS

**PROPOSED
HIGHWAY PLANS**

**F.A.P. ROUTE 657 / 534 (IL164/IL94)
SECTION (116C1-BR)I-1;(111BR)I
BRIDGE JOINT REPLACEMENT
CONTRACT MAINTENANCE
HENDERSON COUNTY**

F.A.P. RTE.	SECTION	COUNTY	TOTAL SHEETS	SHEET NO.
657/534	(116C1-BR)I-1;(111BR)I	HENDERSON	18*	1
		ILLINOIS	CONTRACT NO. 68998	

* 18 + 5 = 23

D-94-064-10

INDEX OF SHEETS:

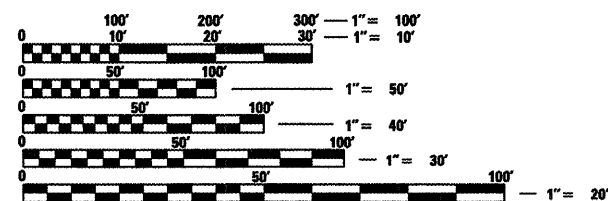
- 1 COVER SHEET
- 2 GENERAL NOTES & COMMITMENTS
- 3-4 SUMMARY OF QUANTITIES
- 5-6 SCHEDULE OF QUANTITIES
- 7 SN 036-0010 EXISTING CROSS SECTION
- 8 SN 036-0010 PROPOSED SHOULDER REMOVAL/REPLACEMENT
- 9 SN 036-0010 PROPOSED TRAFFIC CONTROL
- 10-10D SN 036-0010 BRIDGE REPAIRS DETAILS
- 11 SN 036-0037 EXISTING CROSS SECTION
- 12 SN 036-0037 PROPOSED SHOULDER REMOVAL/REPLACEMENT
- 13 SN 036-0037 PROPOSED TRAFFIC CONTROL
- 14-16A SN 036-0037 BRIDGE REPAIRS DETAILS
- 17-18 WIDTH RESTRICTION SIGNING

STANDARDS:

701001-02 701901-01
701006-03 704001-06
701201-04 780001-02
701321-11

D4 STANDARDS:

630011-D4
630101-D4

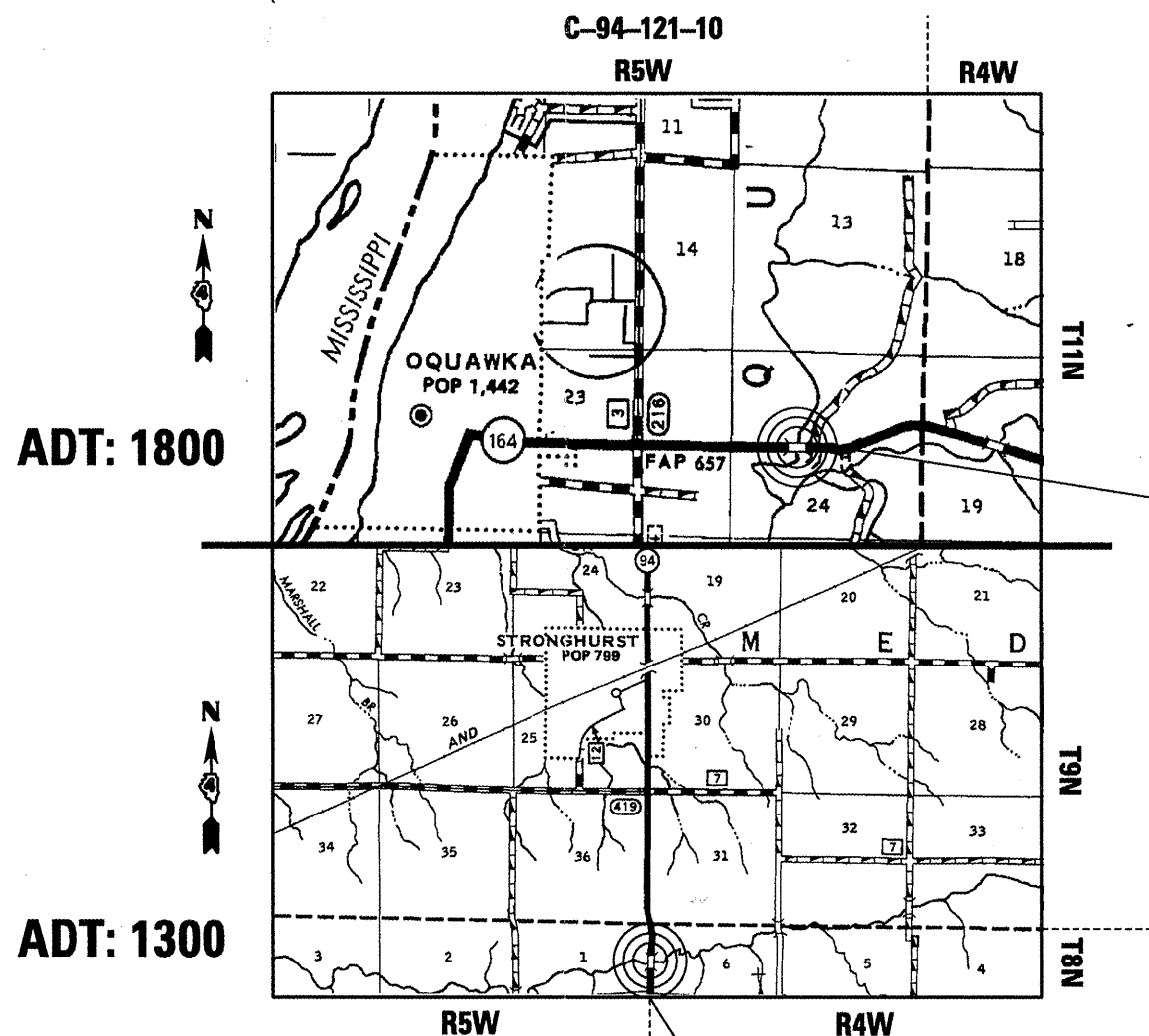


FULL SIZE PLANS HAVE BEEN PREPARED USING STANDARD ENGINEERING SCALES. REDUCED SIZED PLANS WILL NOT CONFORM TO STANDARD SCALES. IN MAKING MEASUREMENTS ON REDUCED PLANS, THE ABOVE SCALES MAY BE USED.

J.U.L.I.E.
JOINT UTILITY LOCATION INFORMATION FOR EXCAVATION
1-800-892-0123
OR 811

PROJECT ENGINEER: JIM MILLER (309) 671-3451
PROJECT DESIGNER: DANIEL CORP (309) 671-3481

CONTRACT NO. 68998



ADT: 1800

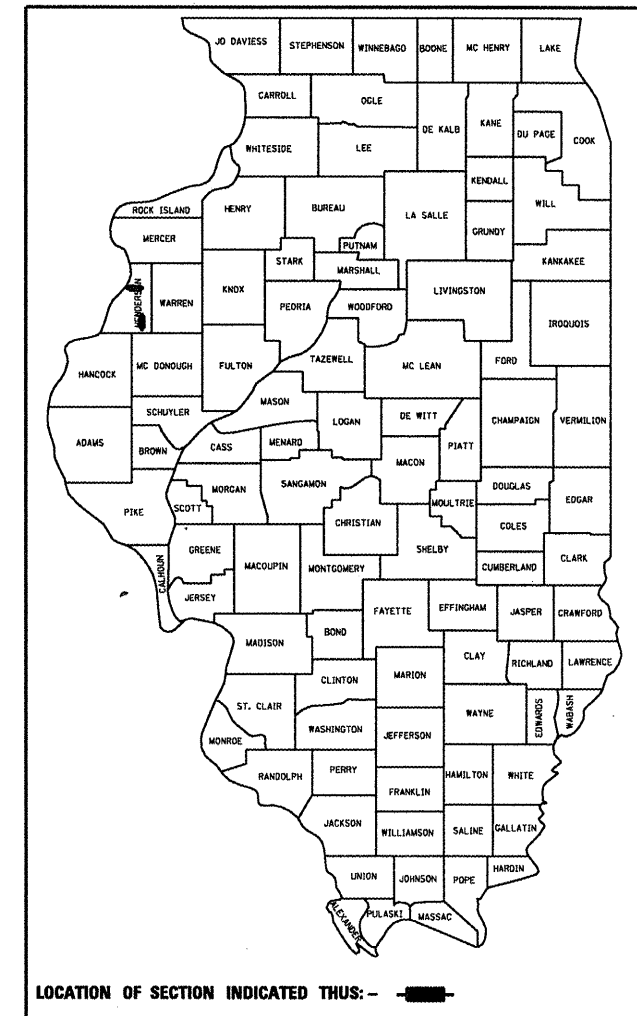
ADT: 1300

(166C1-BR)I-1 STRUCTURE OVER HENDERSON CREEK

REPLACE JOINTS W/ STRIP SEALS ON STRUCTURE CARRYING IL 164 OVER HENDERSON CREEK (SN 036-0037), 1.5 MI EAST OF OQUAWKA

(111BR)I STRUCTURE OVER HONEY CREEK

REPLACE SOUTH JOINT W/ STRIP SEAL ON STRUCTURE CARRYING IL94 OVER HONEY CREEK (SN 036-0010), 1.5 MI SOUTH OF STRONGHURST



LOCATION OF SECTION INDICATED THIS: -

STATE OF ILLINOIS
DEPARTMENT OF TRANSPORTATION
DIVISION OF HIGHWAYS

SUBMITTED 2/10/20 11
Joseph S. Crowe *op*
DEPUTY DIRECTOR OF HIGHWAYS, REGION ENGINEER

March 25 20 11
Scott E. Stitt, P.E.
ASSISTANT ENGINEER OF DESIGN AND ENVIRONMENT

March 25 20 11
Christine H. Reed *op*
DIRECTOR OF HIGHWAYS, CHIEF ENGINEER

**PRINTED BY THE AUTHORITY
OF THE STATE OF ILLINOIS**

COMMITMENTS

No commitments have been made for this project.

For General Notes, see sheets 10 & 14 of 18.

FILE NAME = 68998_SN035-0037_0010.dgn	USER NAME = corpdm	DESIGNED - D CORP	REVISED -	STATE OF ILLINOIS DEPARTMENT OF TRANSPORTATION	COMMITMENTS AND GENERAL NOTES			F.A.P. RTE.	SECTION	COUNTY	TOTAL SHEETS	SHEET NO.
		DRAWN - D CORP	REVISED -					VAR.	(116C1-BR)-14(11BR)	HENDERSON	18	2
	PLOT SCALE = 100.0000' / IN.	CHECKED - C JONES	REVISED -					BRIDGE JOINT REPL.		CONTRACT NO. 68998		
	PLOT DATE = 2/14/2011	DATE - 2/10/11	REVISED -					ILLINOIS FED. AID PROJECT				
				SCALE: _____	SHEET NO. 2 OF 18 SHEETS	STA. _____ TO STA. _____						

SUMMARY OF QUANTITIES

100% STATE - 0014
HENDERSON

CODE NO.	ITEM	UNIT	RURAL	TOTAL
20200500	EARTH EXCAVATION (WIDENING)	CUYD	126	126
35600712	<i>HOT-MIX ASPHALT</i> BASE COURSE WIDENING, 9"	SQYD	504	504
50102400	CONCRETE REMOVAL	CUYD	19.6	19.6
50300255	CONCRETE SUPERSTRUCTURE	CUYD	19.7	19.7
50300300	PROTECTIVE COAT	SQYD	46.1	46.1
50800105	REINFORCEMENT BARS	POUND	948	948
50800205	REINFORCEMENT BARS, EPOXY COATED	POUND	2,180	2,180
50800515	BAR SPLICERS	EACH	41	41
52000110	PREFORMED JOINT STRIP SEAL	FOOT	100	100
67100100	MOBILIZATION	LSUM	1	1
70100405	TRAFFIC CONTROL AND PROTECTION, STANDARD 701321	EACH	2	2
70100450	TRAFFIC CONTROL AND PROTECTION, STANDARD 701201	L SUM	1	1
70100500	TRAFFIC CONTROL AND PROTECTION, STANDARD 701326	L SUM	1	1
70106500	TEMPORARY BRIDGE TRAFFIC SIGNALS	EACH	2	2

FILE NAME = 68998.SN035-0037.0010.dgn

USER NAME = coorpdn

DESIGNED - D CORP

REVISED -

DRAWN - D CORP

REVISED -

PLOT SCALE = 100.0000 / IN.

CHECKED - C JONES

REVISED -

PLOT DATE = 2/14/2011

DATE - 2/10/11

REVISED -

**STATE OF ILLINOIS
DEPARTMENT OF TRANSPORTATION**

SUMMARY OF QUANTITIES

SCALE: _____ SHEET NO. 3 OF 18 SHEETS STA. _____ TO STA. _____

F.A.P. RTE.	SECTION	COUNTY	TOTAL SHEETS	SHEET NO.
VAR.	(116C1-BR1-1)(111BR1)	HENDERSON	18	3
BRIDGE JOINT REPL.			CONTRACT NO. 68998	
ILLINOIS FED. AID PROJECT				

SUMMARY OF QUANTITIES

100% STATE - 0014
HENDERSON

CODE NO.	ITEM	UNIT	RURAL	TOTAL
70106700	TEMPORARY RUMBLE STRIPS	EACH	6	6
70106800	CHANGEABLE MESSAGE SIGN	CAL MO	1	1
*70300520	PAVEMENT MARKING TAPE, TYPE III 4"	FOOT	4577	4577
70301000	WORKZONE PAVEMENT MARKING REMOVAL	SQFT	1526	1526
70400100	TEMPORARY CONCRETE BARRIER	FOOT	675	675
70400200	RELOCATE TEMPORARY CONCRETE BARRIER	FOOT	675	675
*78005110	EPOXY PAVEMENT MARKING-LINE 4"	FOOT	3138	3138
78300100	PAVEMENT MARKING REMOVAL	SQFT	1020	1020
X7016500	TEMPORARY BRIDGE TRAFFIC SIGNALS (SPECIAL)	EACH	3	3
*X7200201	WIDTH RESTRICTION SIGNING	LSUM	1	1
Z0030250	IMPACT ATTENUATORS, TEMPORARY(NON-REDIRECTIVE), TEST LEVEL 3	EACH	4	4
Z0030350	IMPACT ATTENUATORS, RELOCATE(NON-REDIRECTIVE), TEST LEVEL 3	EACH	4	4

*SPECIALTY ITEM

FILE NAME = 68998_S036-0037_0010.dgn

USER NAME = corpdm

DESIGNED - D CORP

REVISED - -----

PLOT SCALE = 1/8" = 100.0000' / IN.

DRAWN - D CORP

REVISED - -----

PLOT DATE = 2/14/2011

CHECKED - C JONES

REVISED - -----

DATE - 2/10/11

REVISED - -----

**STATE OF ILLINOIS
DEPARTMENT OF TRANSPORTATION**

SUMMARY OF QUANTITIES

SCALE: _____ SHEET NO. 4 OF 18 SHEETS STA. _____ TO STA. _____

F.A.P. RTE.	SECTION	COUNTY	TOTAL SHEETS	SHEET NO.
VAR.	(116C1-BR)I-11(111BR)I	HENDERSON	18	4
BRIDGE JOINT REPL.			CONTRACT NO. 68998	
ILLINOIS FED. AID PROJECT				

SCHEDULE OF QUANTITIES

PAVEMENT MARKING LINE, 4" & PAVEMENT MARKING REMOVAL

LOCATION STA. TO STA.	PVMT. MRKG. LINE, 4"		PVMT. MRKG. REM.		
	WHITE LENGTH (FOOT)	YELLOW LENGTH (FOOT)	WHITE EDGELINE (SQ.FT.)	YELLOW SKIP DASH (SQ.FT.)	YELLOW @ (SQ.FT.)
Sta. 489+28 to Sta. 495+00RI.	292		97		
Sta. 489+28 to Sta. 495+00 L.		687		24	180
Sta. 489+28 to Sta. 495+00 LT.	292		97		
TOTAL		1271		398	

PAVEMENT MARKING TAPE TYPE III, 4" & WORKZONE PAVEMENT MARKING REMOVAL

LOCATION STA. TO STA.	TEMP. PVMT. MRKG. LINE-4" WHITE (FT.)	TEMP. PVMT. MRKG. LINE-4" WHITE (FT.)	WORK ZONE PVMT. MRKG. REM. (FT.)
Sta. 493+13 to Sta. 494+91		326 (Taper)	326 (Taper)
Sta. 491+17 to Sta. 493+13		392 (C)	392 (C)
Sta. 489+39 to Sta. 491+17		326 (Taper)	326 (Taper)
Sta. 490+68 to Sta. 491+49	256 (Edge)		256 (Edge)
Sta. 491+49 to Sta. 492+32	162 (Deck)		162 (Deck)
Sta. 490+68 to Sta. 492+32	256 (Edge)		256 (Edge)
SUB-TOTAL	674	1044	
TOTAL		1718	1718

TRAFFIC CONTROL

LOCATION STA. TO STA.	TEMP. CONC. BARRIER (FT)	IMPACT ATTN. TEMP. (EACH)	T,C.&P. STANDARD 701201 (LSUM)	T,C.&P. STANDARD 701321 (EACH)	T,C.&P. STANDARD 701326 (LSUM)
Sta. 491+13 to Sta. 493+34	250				
JOBSITE		2	0.5	1	0.5
TOTAL	250	2	0.5	1	0.5

TEMPORARY TRAFFIC SIGNALS

LOCATION	TRAFFIC SIGNALS(EACH)
Jobsite Traffic Control	1
TOTAL	1

TEMPORARY RUMBLE STRIPS

LOCATION	RUMBLE STRIPS (EACH)
North of Bridge (SB traffic)	3
TOTAL	3

PAVEMENT MIX SPECIFICATION

The following mixture requirements are applicable as replacement for the existing HMA Surface Removal quantity on the bridge deck.

MIXTURE USE(S):	**SURFACE COURSE
AC/PG:	SBS or SBR 70-22
RAP% (MAX):	10% Max
Design Air Voids:	4.0% @ N=70
Mixture Composition: (Graduation Mixture)	IL 9.5 or 12.5
Friction Aggregate:	Mixture D (dolomite only)

** Individual lift thickness will be no less than 3x nominal maximum and no more than 6x nominal maximum aggregate size.

BITUMINOUS WIDENING MIX SPECIFICATION

The following mixture requirements are applicable to this project:

MIXTURE USE(S):	SURFACE LIFT	LOWER LIFTS
AC/PG:	PG 64-22	PG 64-22
RAP% (MAX): **	15% Max	25% Max
Design Air Voids:	4.0% @ N=50	4.0% @ N=50
Mixture Composition: (Graduation Mixture)	IL 9.5 or 12.5	IL 19.0
Friction Aggregate:	Mixture D (dolomite only)	N/A

** If RAP option is selected, the asphalt cement grade may need to be adjusted by the Materials Engineer.

HMA BASE COURSE AND EARTH EXCAVATION WIDENING

EARTH EXCAVATION WIDENING			
LEFT SOUTH APPROACH	SQ.YD.	LEFT NORTH APPROACH	SQ.YD.
Sta. 492+32 to Sta. 493+60	71.0	Sta. 491+49 to Sta. 490+68	45.0
RIGHT SOUTH APPROACH	71.0	RIGHT NORTH APPROACH	45.0
TOTAL			232
TOTAL @ 9" DEPTH IN CU.YD.			
58			
HMA BASE COURSE WIDENING, 9"			
LEFT SOUTH APPROACH	SQ.YD.	LEFT NORTH APPROACH	SQ.YD.
Sta. 492+32 to Sta. 493+60	71.0	Sta. 491+49 to Sta. 490+68	45.0
RIGHT SOUTH APPROACH	71.0	RIGHT NORTH APPROACH	45.0
TOTAL			232

NOTE
Additional pay items that may not be included in the SCHEDULE OF QUANTITIES pertain to the superstructure repair and are designated on sheets 8 & 10 of 18. Width Restriction Signing is on sheet 17 of 18.

SCHEDULE OF QUANTITIES

FILE NAME =	USER NAME = *USER*	DESIGNED - D CORP	REVISED -	STATE OF ILLINOIS DEPARTMENT OF TRANSPORTATION	SCHEDULE OF QUANTITIES SN 036-0010	F.A.P. RTE.	SECTION	COUNTY	TOTAL SHEETS	SHEET NO.	
FILEL		DRAWN - D CORP	REVISED -			534	(111BR)	HENDERSON	18	5	
	PLOT SCALE = *SCALE*	CHECKED - C JONES	REVISED -			BRIDGE JOINT REPL. CONTRACT NO. 68998					
	PLOT DATE = *DATE*	DATE - 2/10/11	REVISED -			ILLINOIS FED. AID PROJECT					
				SCALE: -----	SHEET NO. 5 OF 18 SHEETS	STA. 491+90 TO STA. 492+37					

SCHEDULE OF QUANTITIES

PAVEMENT MARKING LINE, 4" & PAVEMENT MARKING REMOVAL

LOCATION STA. TO STA.	PVMT. MRKG. LINE, 4"		PVMT. MRKG. REM.		
	WHITE LENGTH (FOOT)	YELLOW LENGTH (FOOT)	WHITE EDGE LINE (SQ.FT.)	YELLOW SKIP DASH (SQ.FT.)	YELLOW @ (SQ.FT.)
Sta. 92+55 to Sta. 98+30 Rt.	575		192		
Sta. 90+05 to Sta. 93+72 @		142		31	16
Sta. 97+22 to Sta. 100+35 @		625			208
Sta. 92+55 to Sta. 97+80 LT.	525		175		
TOTAL		1867		622	

PAVEMENT MARKING TAPE TYPE III, 4" & WORKZONE PAVEMENT MARKING REMOVAL

LOCATION STA. TO STA.	TEMP. PVMT. MRKG. LINE-4" WHITE (FT.)	TEMP. PVMT. MRKG. LINE-4" WHITE (FT.)	WORK ZONE PVMT. MRKG. REM. (FT.)
Sta. 93+00 to Sta. 93+72		230 (Edge)	230 (Edge)
Sta. 93+72 to Sta. 97+22		700 (Deck)	700 (Deck)
Sta. 97+22 to Sta. 98+32		214 (Edge)	214 (Edge)
Sta. 90+65 to Sta. 93+00	405 (Taper)		405 (Taper)
Sta. 93+00 to Sta. 97+85	970 @		970 (Deck)
Sta. 97+85 to Sta. 99+75	340 (Taper)		340 (Taper)
SUB-TOTAL	1715	1144	340
TOTAL		2859	2859

TEMPORARY TRAFFIC SIGNALS

LOCATION	TRAFFIC SIGNAL(S) EACH
Jobsite Traffic Control	1
TOTAL	1

TEMPORARY RUMBLE STRIPS

LOCATION	RUMBLE STRIPS (EACH)
East of Bridge (WB traffic)	3
TOTAL	3

TRAFFIC CONTROL

LOCATION STA. TO STA.	TEMP. CONC. BARRIER (FT)	IMPACT ATTN. TEMP. (EACH)	T.C.&P. STANDARD 701201 (LSUM)	T.C.&P. STANDARD 701321 (EACH)	T.C.&P. STANDARD 701326 (LSUM)
Sta. 93+25 to Sta. 97+50	425				
JOBSITE		2	0.5	1	0.5
TOTAL	425	2	0.5	1	0.5

PAVEMENT MIX SPECIFICATION

The following mixture requirements are applicable as replacement for the existing HMA Surface Removal quantity on the bridge deck.

MIXTURE USE(S):	**SURFACE COURSE
AC/PG:	SBS or SBR 70-22
RAP% (MAX):	10% Max
Design Air Voids:	4.0% @ N=70
Mixture Composition: (Graduation Mixture)	IL 9.5 or 12.5
Friction Aggregate:	Mixture D (dolomite only)

** Individual lift thickness will be no less than 3x nominal maximum and no more than 6x nominal maximum aggregate size.

BITUMINOUS WIDENING MIX SPECIFICATION

The following mixture requirements are applicable to this project:

MIXTURE USE(S):	SURFACE LIFT	LOWER LIFTS
AC/PG:	PG 64-22	PG 64-22
RAP% (MAX): **	15% Max	25% Max
Design Air Voids:	4.0% @ N=50	4.0% @ N=50
Mixture Composition: (Graduation Mixture)	IL 9.5 or 12.5	IL 19.0
Friction Aggregate:	Mixture D (dolomite only)	N/A

** If RAP option is selected, the asphalt cement grade may need to be adjusted by the Materials Engineer.

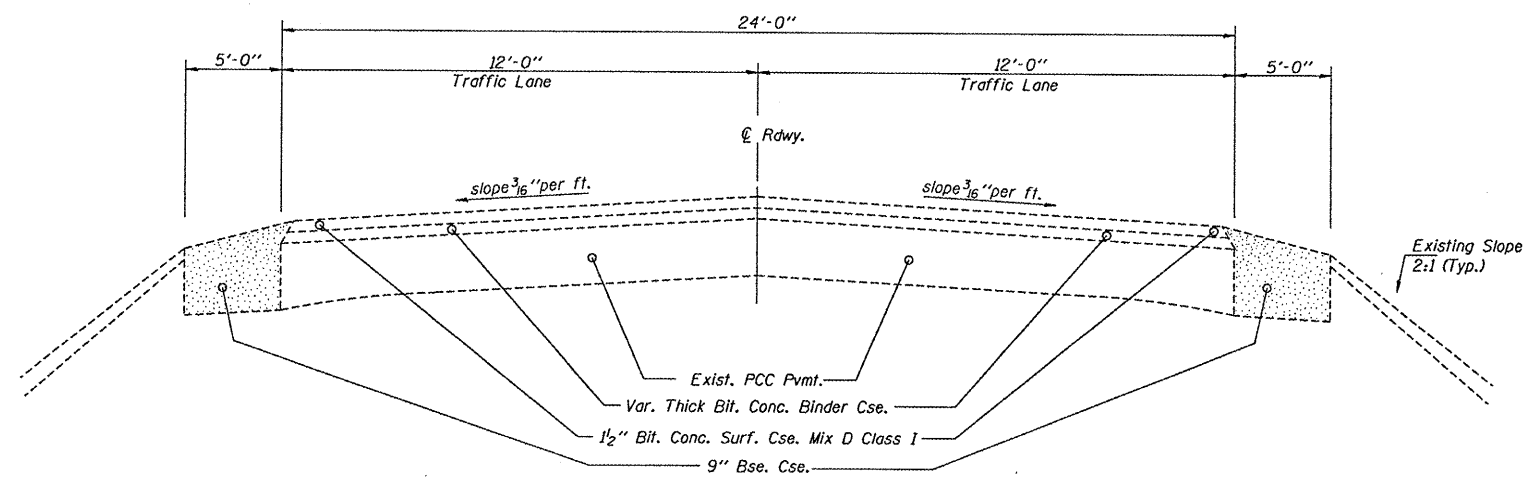
HMA BASE COURSE AND EARTH EXCAVATION WIDENING

EARTH EXCAVATION WIDENING			
LEFT WEST APPROACH	SO.YD.	LEFT EAST APPROACH	SO.YD.
Sta. 92+37 to Sta. 93+72	75.0	Sta. 97+22 to Sta. 98+32	67.0
RIGHT WEST APPROACH		RIGHT EAST APPROACH	
Sta. 92+47 to Sta. 93+72	70.0	Sta. 97+22 to Sta. 98+42	60.0
TOTAL		TOTAL	
		68.0	
HMA BASE COURSE WIDENING, 9"			
LEFT WEST APPROACH	SO.YD.	LEFT EAST APPROACH	SO.YD.
Sta. 92+37 to Sta. 93+72	75.0	Sta. 97+22 to Sta. 98+32	67.0
RIGHT WEST APPROACH		RIGHT EAST APPROACH	
Sta. 92+47 to Sta. 93+72	70.0	Sta. 97+22 to Sta. 98+42	60.0
TOTAL		TOTAL	
		272.0	

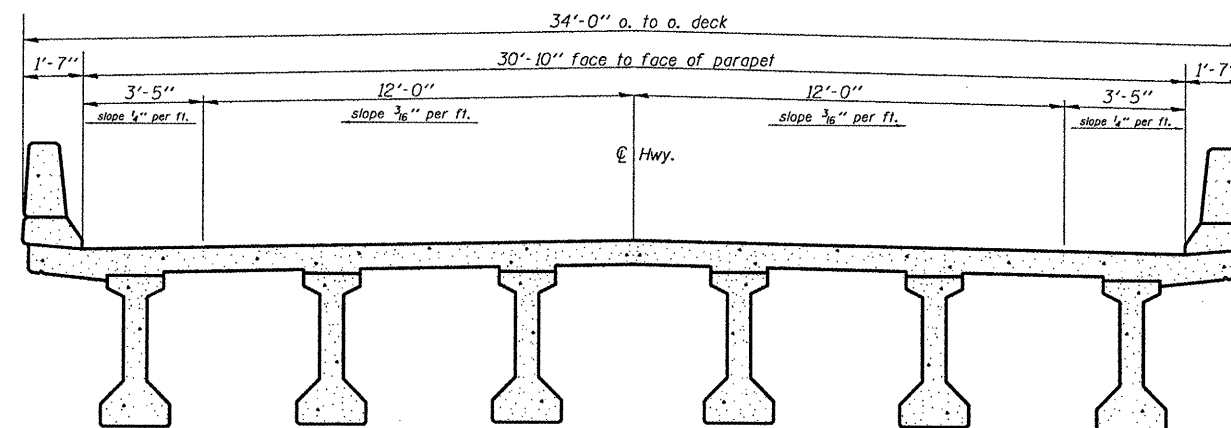
NOTE
Additional pay items that may not be included in the SCHEDULE OF QUANTITIES pertain to the superstructure repair and are designated on sheets 12 & 14 of 18. Width Restriction Signing is on sheet 18 of 18.

SCHEDULE OF
QUANTITIES

FILE NAME =	USER NAME = \$USER*	DESIGNED - D CORP	REVISED -	STATE OF ILLINOIS DEPARTMENT OF TRANSPORTATION	SCHEDULE OF QUANTITIES SN 036-0037	F.A.P. RTE.	SECTION	COUNTY	TOTAL SHEETS	SHEET NO.	
*FILE#		DRAWN - D CORP	REVISED -			657	(116C1-BR1)-1	HENDERSON	18	6	
	PLOT SCALE = \$SCALE*	CHECKED - C JONES	REVISED -			BRIDGE JOINT REPL.		CONTRACT NO. 68998			
	PLOT DATE = \$DATE*	DATE - 2/10/11	REVISED -			ILLINOIS FED. AID PROJECT					



ROADWAY SECTION



CROSS SECTION
(Looking North)

FILE NAME =	USER NAME = #USER#	DESIGNED - D CORP	REVISED -
#FILE#		DRAWN - D CORP	REVISED -
	PLOT SCALE = #SCALE#	CHECKED - C JONES	REVISED -
	PLOT DATE = #DATE#	DATE - 2/10/2011	REVISED -

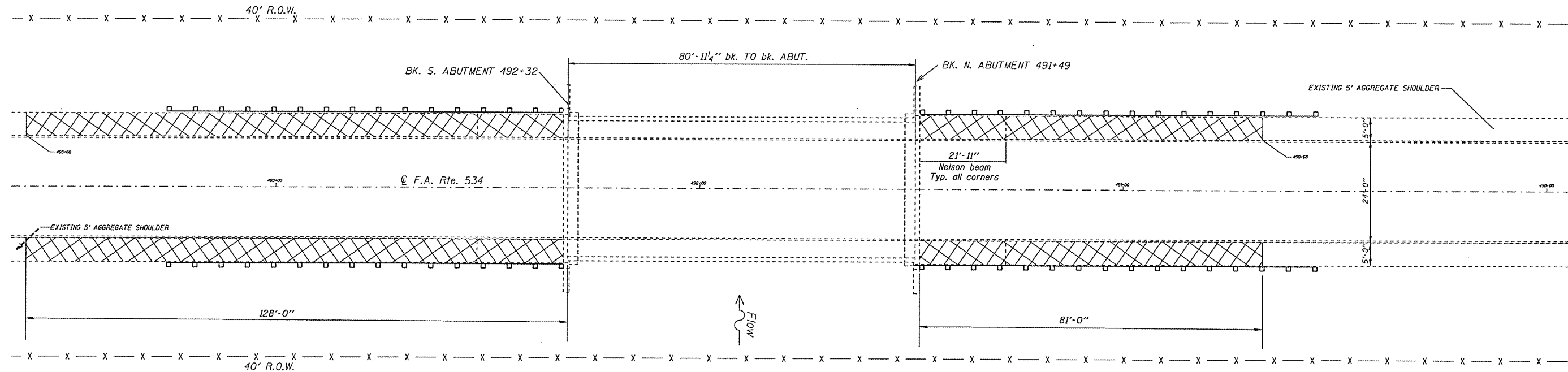
STATE OF ILLINOIS
DEPARTMENT OF TRANSPORTATION

EXISTING TYPICAL SECTIONS
SN 036-0010

SCALE: SHEET NO. 7 OF 18 SHEETS STA. 491+90 TO STA. 492+37

F.A.P. RTE.	SECTION	COUNTY	TOTAL SHEETS	SHEET NO.
534	(111B)R1	HENDERSON	18	7
BRIDGE JOINT REPL.		CONTRACT NO. 68998		
ILLINOIS FED. AID PROJECT				

STRUCTURE CARRYING IL94 OVER HONEY CRK



Note:
Contractor shall use extreme care during earth excavation so as not to damage the Nelson beams. Any damage to the Nelson beams shall be repaired at the contractor's expense.

BILL OF MATERIAL

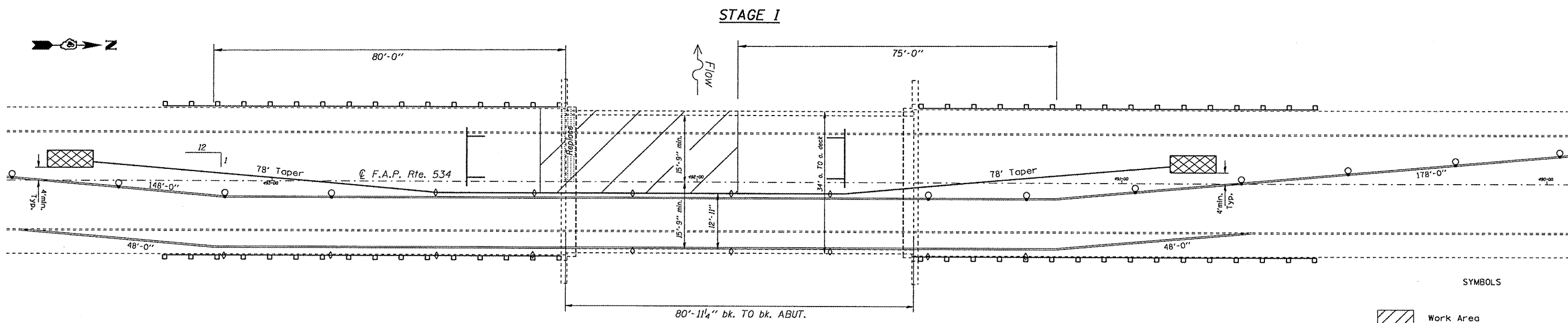
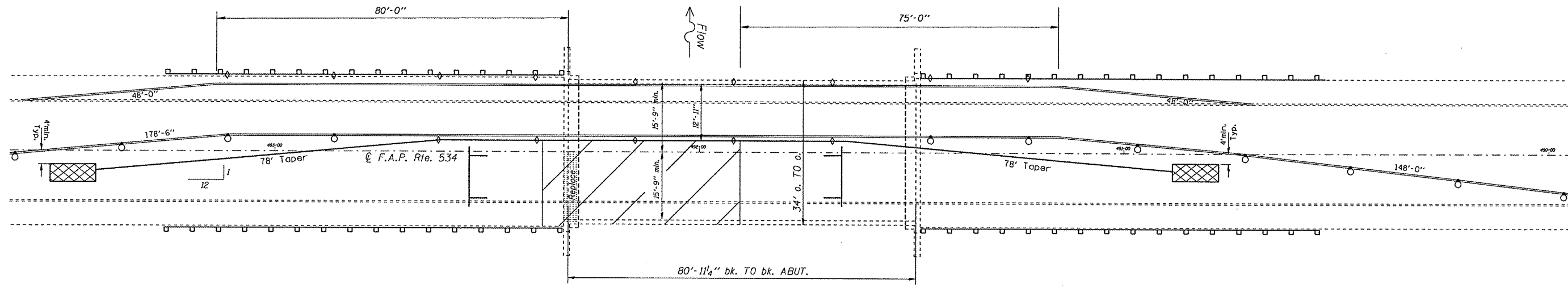
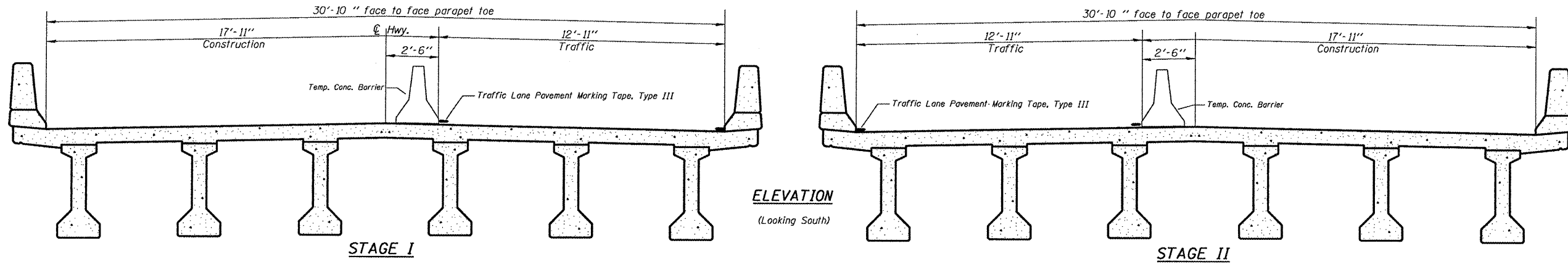
Item	Unit	Total
Earth Excavation (Widening)	Cu.Yd.	58
HMA Base Course Widening, 9"	Sq.Yd.	232

LEGEND

Proposed Shoulder Removal/Replacement

FILE NAME =	USER NAME = *USER*	DESIGNED - D CORP	REVISED -	STATE OF ILLINOIS DEPARTMENT OF TRANSPORTATION	PROPOSED SHOULDER REMOVAL/REPLACEMENT SN 036-0010	F.A.P. RTE. 534	SECTION (111BR)1	COUNTY HENDERSON	TOTAL SHEETS 18	SHEET NO. 8
#FILE#		DRAWN - D CORP	REVISED -			BRIDGE JOINT REPL.		CONTRACT NO. 68998		
	PLOT SCALE = *SCALE*	CHECKED - C JONES	REVISED -		SCALE: -----	SHEET NO. 9 OF 18 SHEETS	STA. 491+90 TO STA. 492+37	ILLINOIS FED. AID PROJECT		
	PLOT DATE = *DATE*	DATE - 2/10/11	REVISED -							

STRUCTURE CARRYING IL94 OVER HONEY CRK



NOTES
Refer to Highway Standard 701321 for exact placement of traffic management devices and other clarifications as construction staging symbols and dimensioning were duplicated off of this standard. Temporary Traffic Signals shown in Standard 701321 are to be installed by others. Removal of these signals is included in this contract. See Special Provisions.

Place rumble strips North of the bridge as shown in STD. 701321 or as directed by the engineer

- SYMBOLS**
- Work Area
 - Type II Barricade
 - Drum w/ steady burning light
 - Type C bidirectional reflector
 - Temporary Concrete Barrier
 - Impact Attenuator NRD TL3

FILE NAME =	USER NAME = \$USER*	DESIGNED - D CORP	REVISED -
#FILE#		DRAWN - D CORP	REVISED -
	PLOT SCALE = \$SCALE*	CHECKED - C JONES	REVISED -
	PLOT DATE = \$DATE*	DATE - 2/10/11	REVISED -

**STATE OF ILLINOIS
DEPARTMENT OF TRANSPORTATION**

PROPOSED TRAFFIC CONTROL	
SN 036-0010	
SCALE: _____	SHEET NO. 10 OF 18 SHEETS
STA. 491+90 TO STA. 492+90	

F.A.P. RTE. 534	SECTION (111BR)	COUNTY HENDERSON	TOTAL SHEETS 18	SHEET NO. 9
BRIDGE JOINT REPL.			CONTRACT NO. 68998	
ILLINOIS FED. AID PROJECT				

GENERAL NOTES

Existing reinforcement bars extending into the removal area shall be cleaned, straightened and incorporated into the new construction. Any reinforcement bars that are damaged during concrete removal shall be replaced with an approved bar splicer or anchorage system. Cost included with Concrete Removal.

Joint openings shall be adjusted according to Article 520.04 of the Std. Specs. when the deck is poured at an ambient temperature other than 50° F.

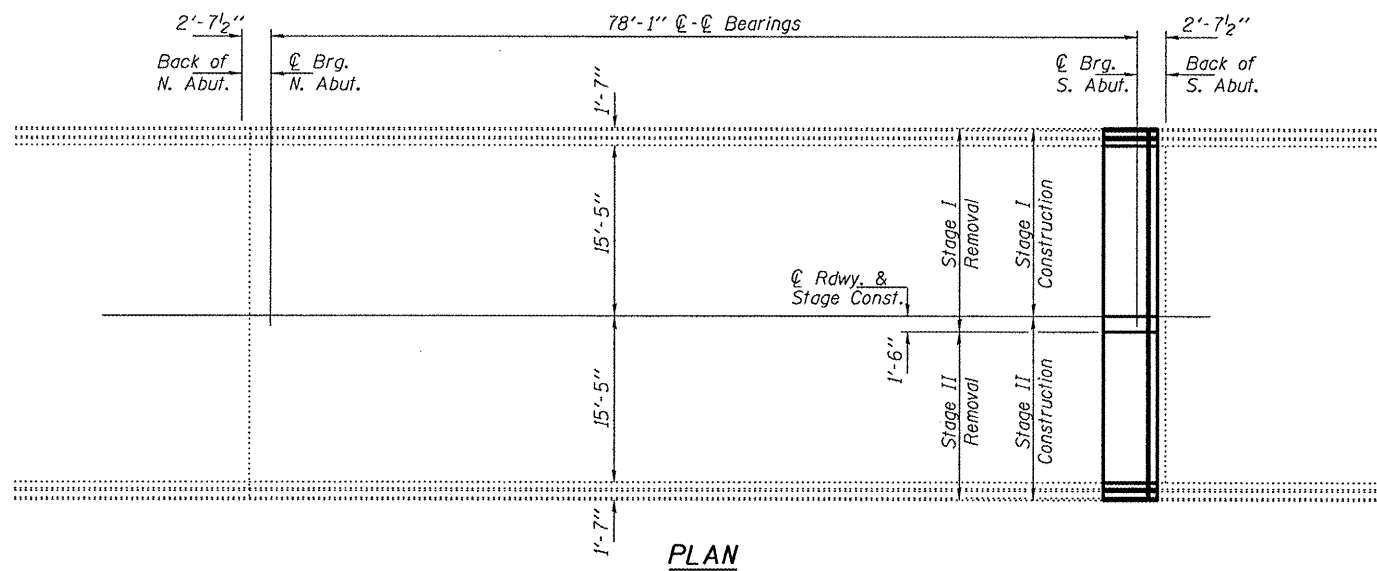
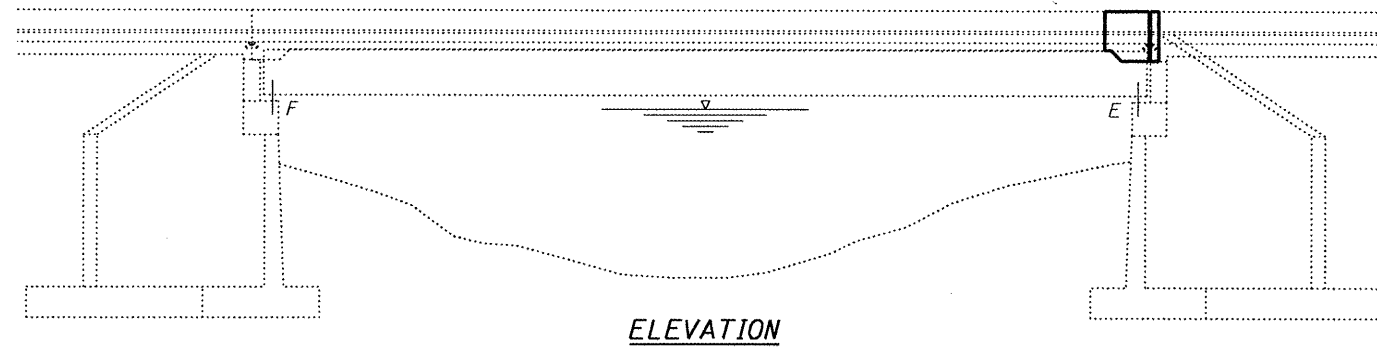
Reinforcement bars shall conform to the requirements of ASTM A 706 Gr 60. See Special Provisions.

Reinforcement bars designated (E) shall be epoxy coated.

Plan dimensions and details relative to existing plans are subject to nominal construction variations. The Contractor shall field verify existing dimensions and details affecting new construction and make necessary approved adjustments prior to construction or ordering of materials. Such variations shall not be cause for additional compensation for a change in scope of the work, however, the Contractor will be paid for the quantity actually furnished at the unit price bid for the work.

The deck surface shall have its final finish tined according to Article 420.09(e)(1) of the Standard Specifications. Cost included with Concrete Superstructure.

The Contractor shall use extreme care during concrete removal so as not to damage the PPC I-Beam.



TOTAL BILL OF MATERIAL

ITEM	UNIT	QUANTITY
Concrete Removal	Cu. Yd.	8.8
Concrete Superstructure	Cu. Yd.	8.8
Preformed Joint Strip Seal	Foot	33
Reinforcement Bars, Epoxy Coated	Pound	1070
* Protective Coat	Sq. Yd.	20
Bar Splicers	Each	17

* On new concrete only



EXPIRES 11-30-2012

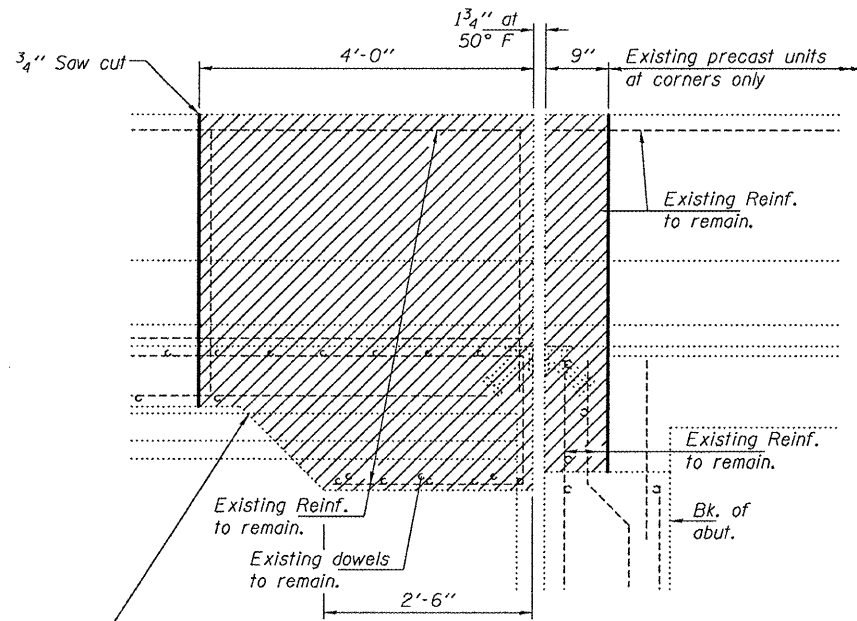
DESIGNED <i>Adrian I. Holloway</i>	EXAMINED <i>Jay F. White</i>	DATE MARCH 30, 2011
CHECKED <i>Adrian I. Holloway</i>	PASSED <i>David Carl Puzey</i>	
DRAWN <i>baliva</i>		
CHECKED <i>T.J.L. ATH</i>		

STATE OF ILLINOIS
DEPARTMENT OF TRANSPORTATION

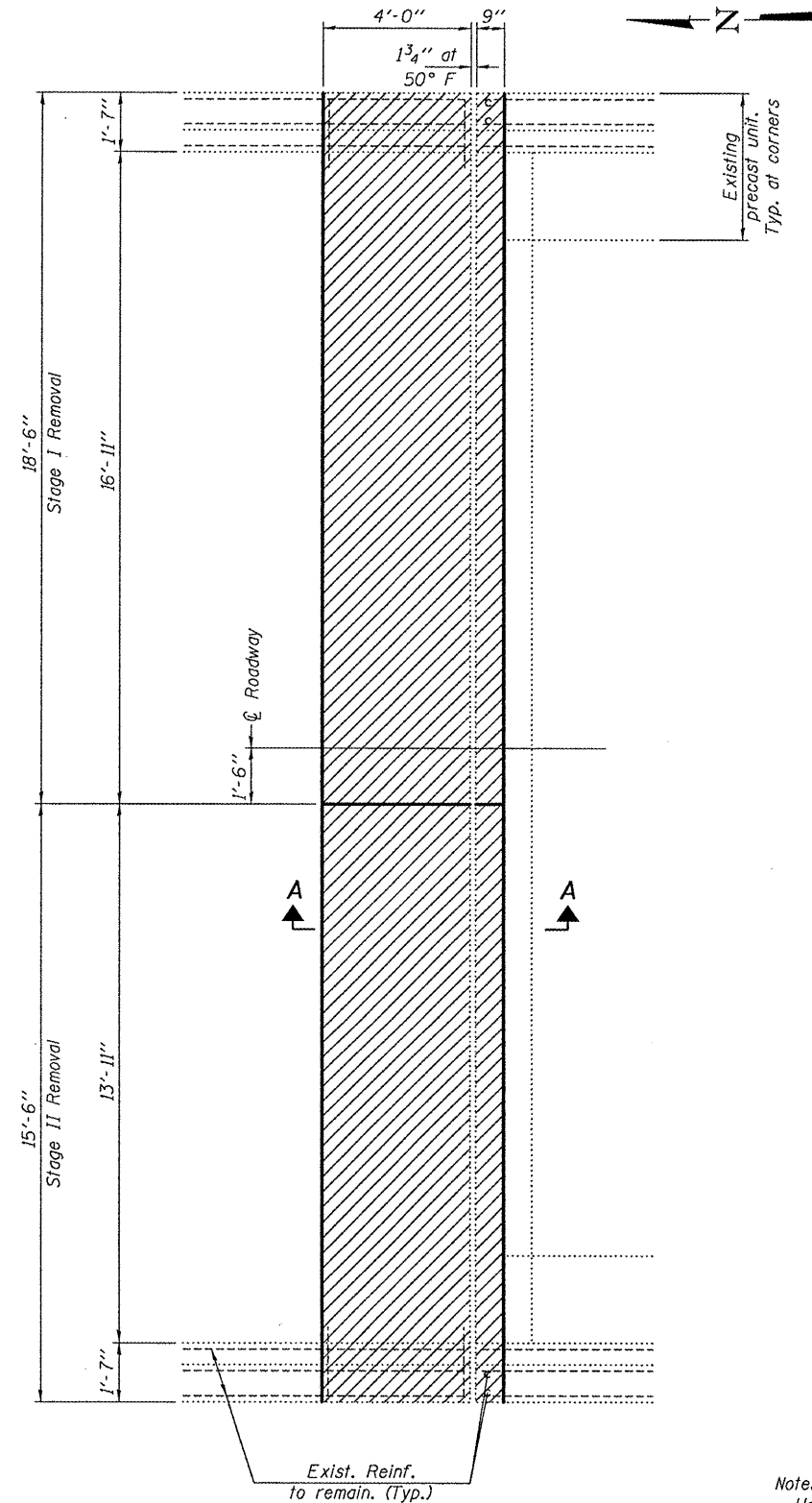
PLAN AND ELEVATION
FAP 534 OVER HONEY CREEK
SN 036-0010

F.A.P. RTE. 534	SECTION (11)BR1	COUNTY HENDERSON	TOTAL SHEETS 18	SHEET NO. 10
CONTRACT NO. 68998			ILLINOIS FED. AID PROJECT	

SHEET NO. 1 OF 5 SHEETS



SECTION A-A



REMOVAL PLAN

Notes:
 Hatched areas indicate removal.
 Removal of existing joint is included with Concrete Removal.

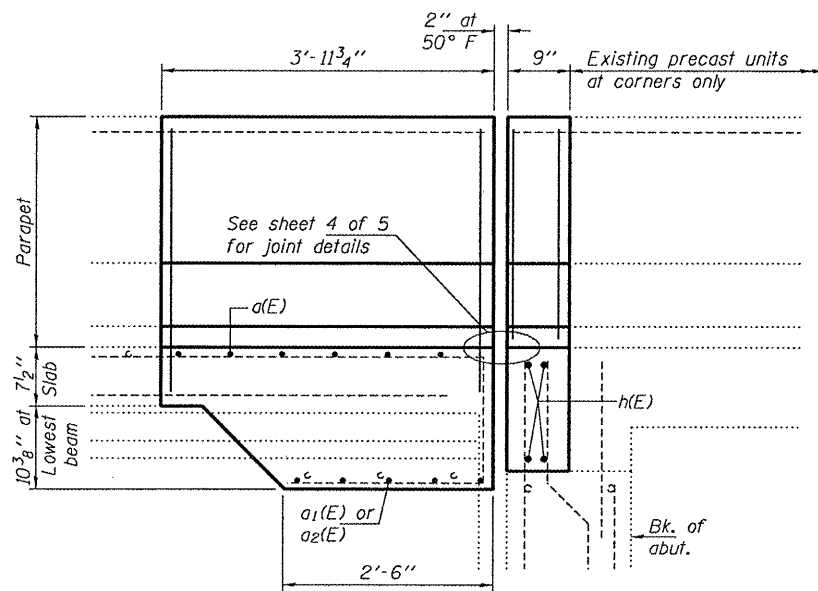
DESIGNED <i>I.J.L.</i>	EXAMINED <i>James F. J. [Signature]</i>	DATE <i>MARCH 30, 2011</i>
CHECKED <i>ATH</i>	ACTING ENGINEER OF STRUCTURAL SERVICES	
DRAWN <i>baliva</i>	PASSED <i>[Signature]</i>	
CHECKED <i>I.J.L. ATH</i>	ACTING ENGINEER OF BRIDGES AND STRUCTURES	

**STATE OF ILLINOIS
 DEPARTMENT OF TRANSPORTATION**

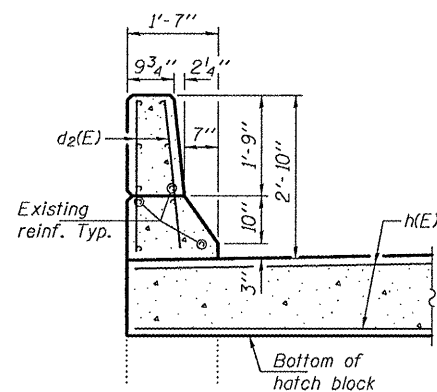
**REPAIR DETAILS
 SN 036-0010**

SHEET NO. 2 OF 5 SHEETS

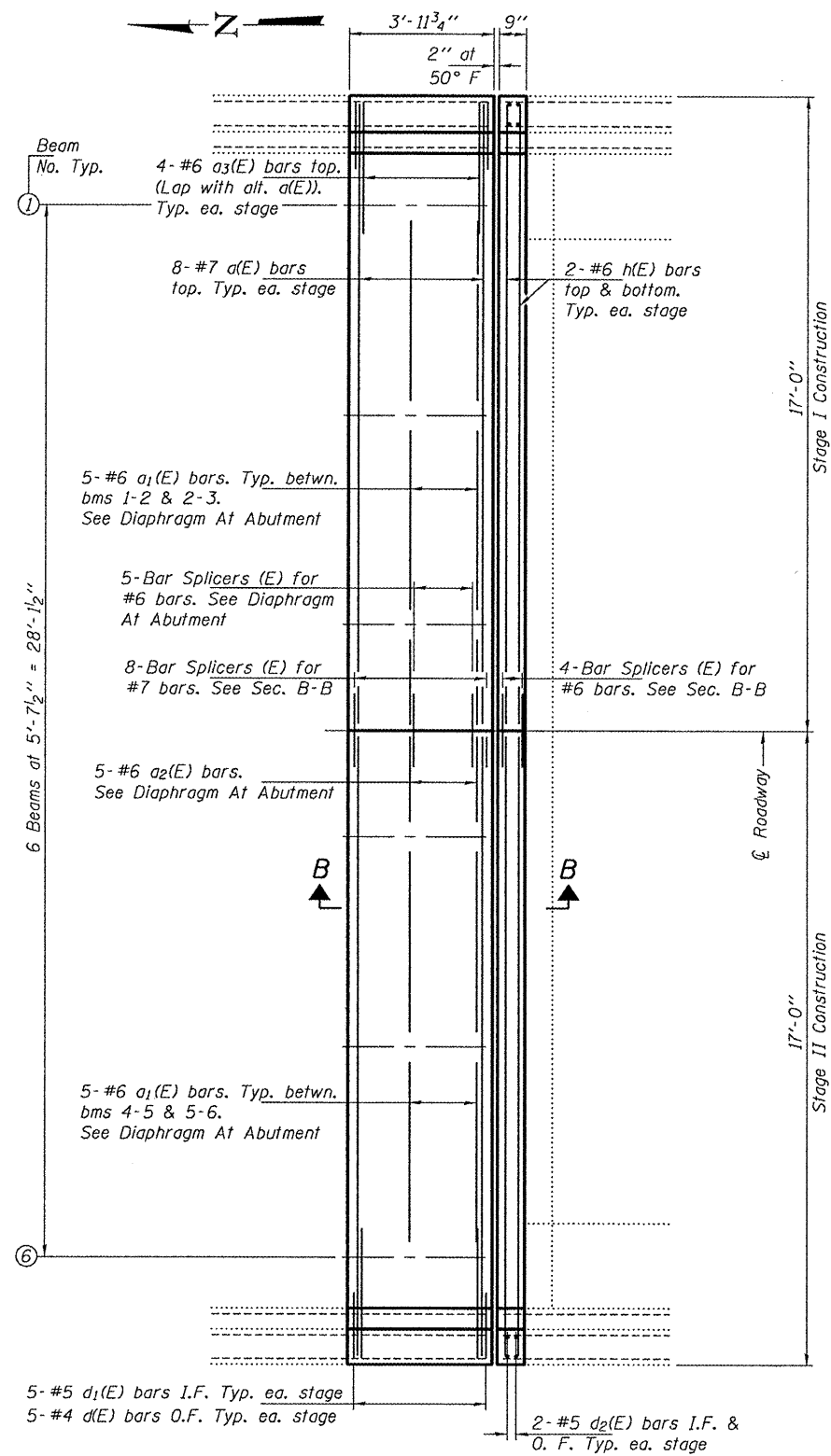
F.A.P. RTE.	SECTION	COUNTY	TOTAL SHEETS	SHEET NO.
534	1111BR11	HENDERSON	18	10A
CONTRACT NO. 68998			ILLINOIS FED. AID PROJECT	



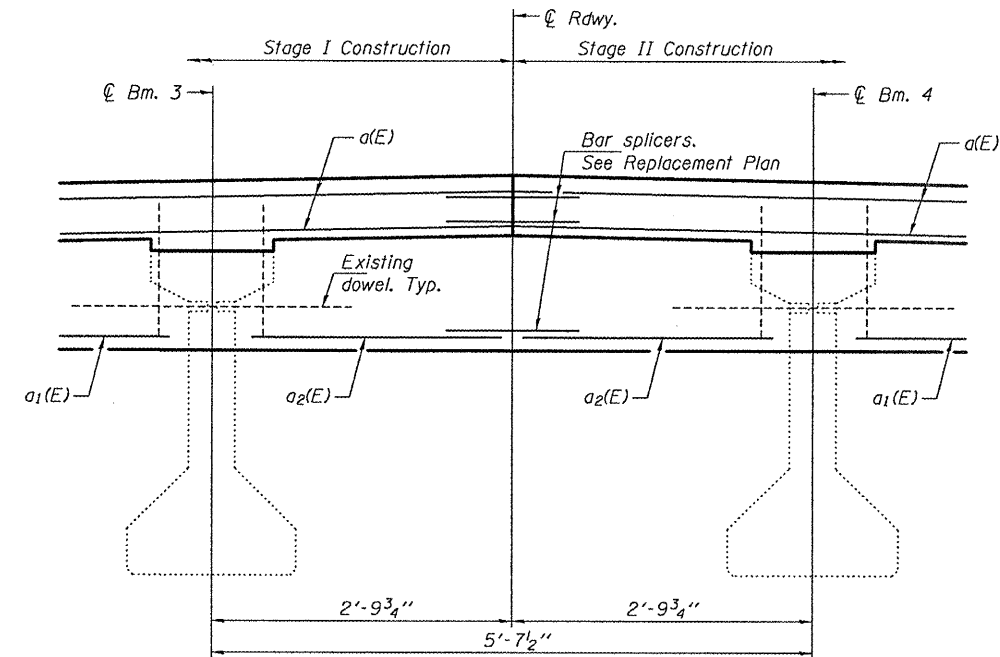
SECTION B-B



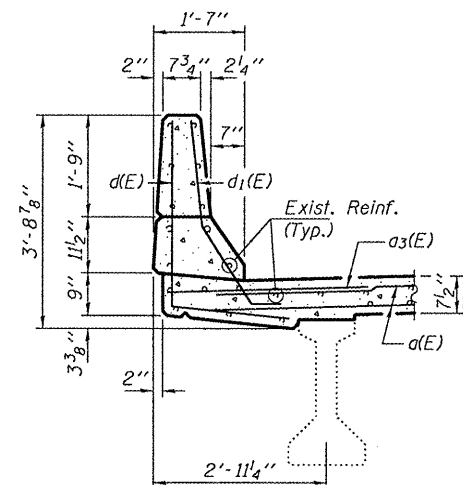
SECTION AT APPROACH PARAPET



REPLACEMENT PLAN



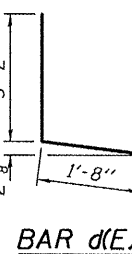
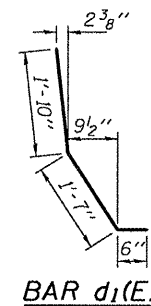
DIAPHRAGM AT ABUTMENT
(Looking South)



TYPICAL PARAPET SECTION

BILL OF MATERIAL

Bar	No.	Size	Length	Shape
a(E)	16	#7	16'-8"	—
a1(E)	20	#6	4'-9"	—
a2(E)	10	#6	2'-3"	—
a3(E)	8	#6	4'-0"	—
d(E)	10	#4	4'-10"	L
d1(E)	10	#5	3'-11"	L
d2(E)	8	#5	2'-8"	—
h(E)	8	#6	16'-8"	—
Bar Splicers	Each		17	
Concrete Removal	Cu. Yd.		8.8	
Concrete Superstructure	Cu. Yd.		8.8	
Reinforcement Bars, Epoxy Coated	Lbs.		1070	



DESIGNED IJL
 CHECKED ATH
 DRAWN balva
 CHECKED IJL ATH

EXAMINED *James F. Joffe* DATE MARCH 30, 2011
 ACTING ENGINEER OF STRUCTURAL SERVICES

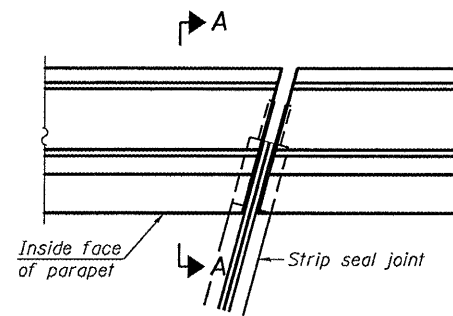
PASSED *Carl King*
 ACTING ENGINEER OF BRIDGES AND STRUCTURES

STATE OF ILLINOIS
DEPARTMENT OF TRANSPORTATION

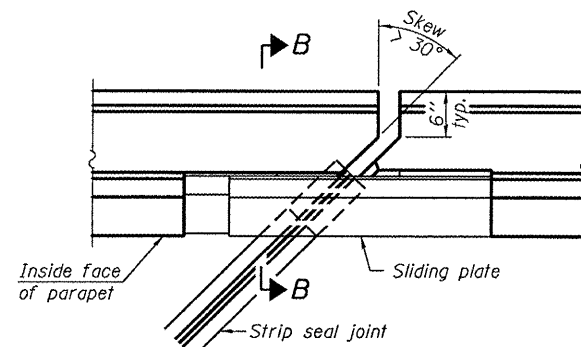
REPAIR DETAILS
SN 036-0010

SHEET NO. 3 OF 5 SHEETS

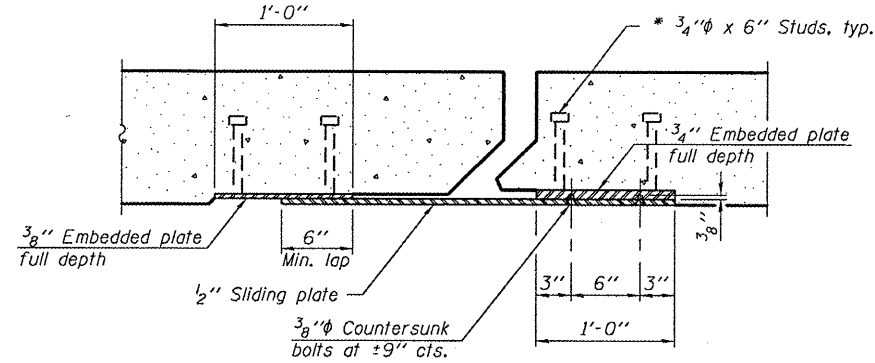
F.A.P. RITE. 534 SECTION 411BR11 COUNTY HENDERSON SHEET NO. 18 OF 100
 CONTRACT NO. 68998
 ILLINOIS FED. AID PROJECT



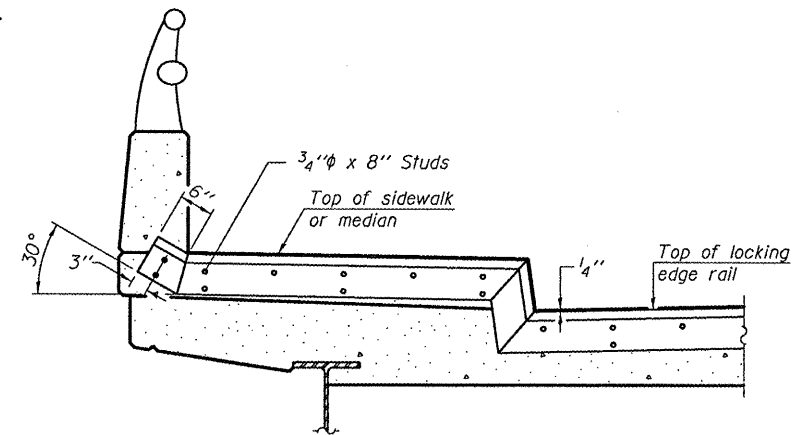
PLAN
(For skews $\leq 30^\circ$)



PLAN
(For skews $> 30^\circ$)
Showing point block

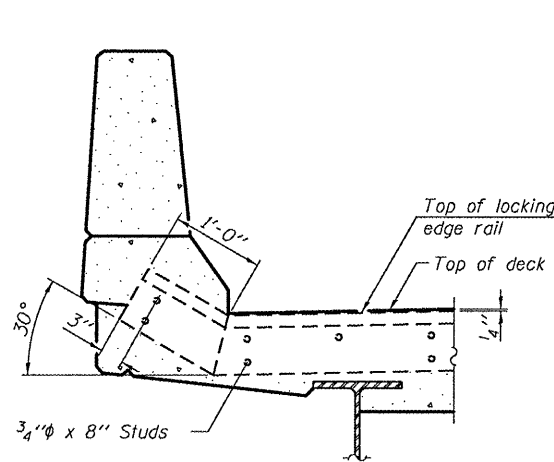


SECTION C-C

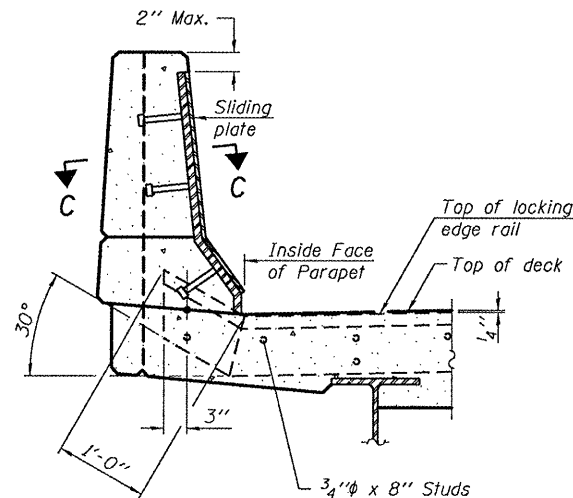


**TYPICAL END TREATMENT
AT SIDEWALK OR MEDIAN**

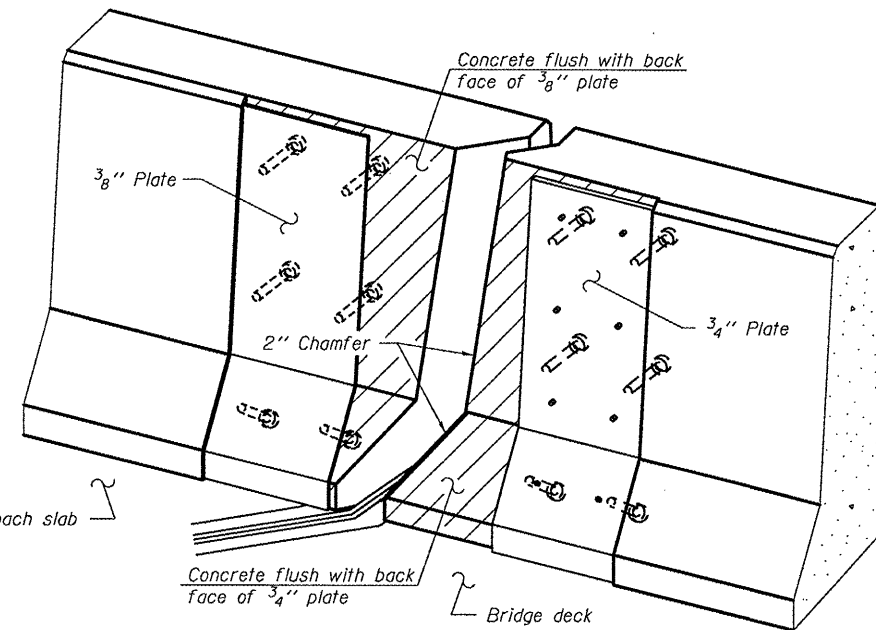
Shorter plates with a single row of studs at 12" cts. may be necessary on medians which are shallower than 9". See manufacturer's recommendation.



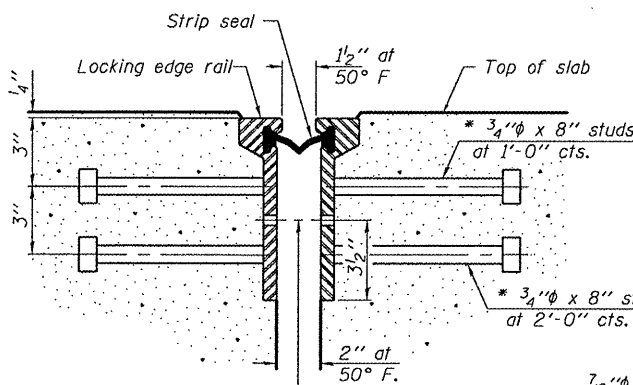
SECTION A-A



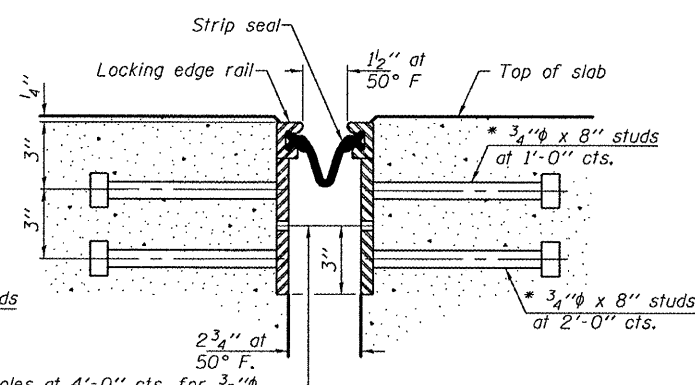
SECTION B-B



TRIMETRIC VIEW
(Showing back plates only)



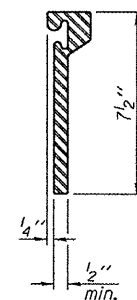
**SECTION THRU
ROLLED RAIL JOINT**



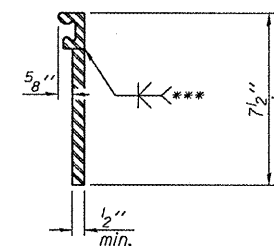
**SECTION THRU
WELDED RAIL JOINT**

$7/16"$ holes at 4'-0" cts. for $3/8"$ bolts. All bolts shall be burned, sawed, or chipped off flush with the plates after forms are removed, typ.

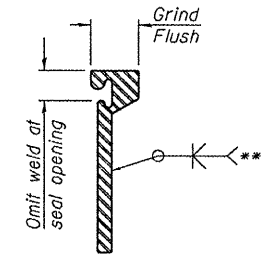
$7/16"$ holes at 4'-0" cts. for $3/8"$ bolts. All bolts shall be burned, sawed, or chipped off flush with the plates after forms are removed, typ.



**ROLLED
EXTRUDED RAIL**



WELDED RAIL



**LOCKING EDGE
RAIL SPLICE**

The inside of the locking edge rail groove shall be free of weld residue. Rolled rail shown, welded rail similar.

Notes:

The strip seal shall be made continuous and shall have a minimum thickness of $1/4"$. The configuration of the strip seal shall match the configuration of the Locking Edge Rails. Open or "webbed" strip seal gland configurations are not permitted. The gland shall be sized for a maximum rated movement of 4 inches.

The Locking Edge Rails depicted are conceptual only, except for the minimum dimensions shown. The actual configuration of the Locking Edge Rails and matching strip seal may vary from manufacturer to manufacturer. Flanged edge rails will not be allowed. Locking Edge Rails may be spliced at slope discontinuities.

The manufacturer's recommended installation methods shall be followed.

The joint opening and deck dimensions detailed on the superstructure are based on a rolled rail expansion joint. If the Contractor elects to use the welded rail expansion joint, the opening and deck dimensions shall be modified according to the dimensions detailed on this sheet. Required modifications shall be made at no additional cost to the State.

All steel components shall be galvanized after fabrication according to Article 520.03 of the Standard Specifications. Maximum space between rail segments at stage lines shall be $3/16"$, sealed with a suitable sealant.

Parapet plates and anchorage studs for skews $> 30^\circ$ included in the cost of Preformed Joint Strip Seal.

BILL OF MATERIAL

Item	Unit	Total
Preformed Joint Strip Seal	Foot	33

* Granular or solid flux filled headed studs conforming to Article 1006.32 of the Std. Specs., automatically end welded.

EJ-SSJ

7-1-10

DESIGNED	I.J.L.
CHECKED	ATH
DRAWN	baliva
CHECKED	I.J.L. ATH

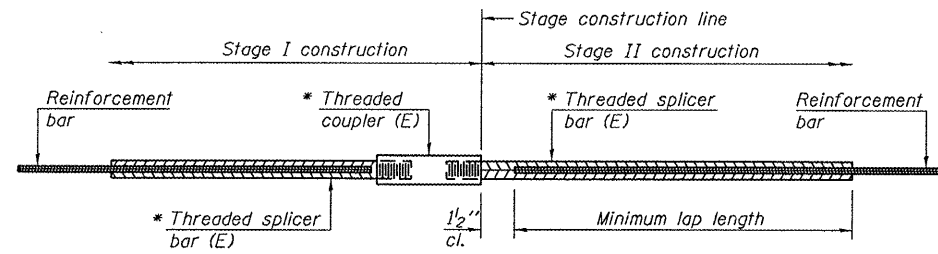
EXAMINED	<i>James F. [Signature]</i>	DATE	MARCH 30, 2011
PASSED	<i>[Signature]</i>		

STATE OF ILLINOIS
DEPARTMENT OF TRANSPORTATION

PREFORMED JOINT STRIP SEAL
SN 036-0010

SHEET NO. 4 OF 5 SHEETS

F.A.P. RTE.	SECTION	COUNTY	TOTAL SHEETS	SHEET NO.
534	(11)BRI	HENDERSON	18	10C
CONTRACT NO. 68998			ILLINOIS FED. AID PROJECT	



STANDARD BAR SPLICER ASSEMBLY

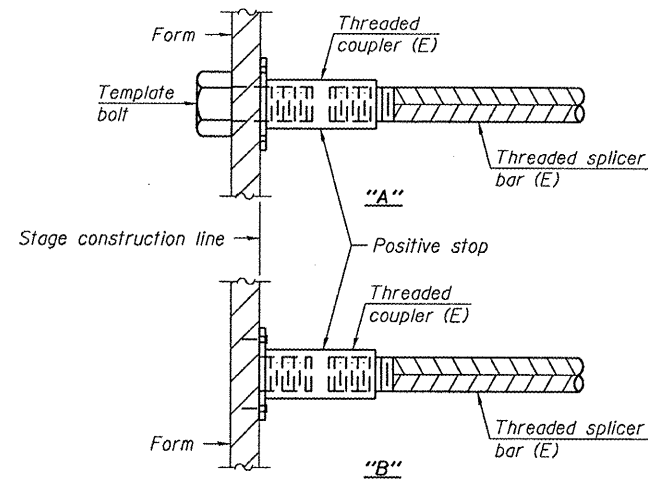
Bar size to be spliced	Minimum Lap Lengths				
	Table 1	Table 2	Table 3	Table 4	Table 5
3, 4	1'-5"	1'-11"	2'-1"	2'-4"	2'-3"
5	1'-9"	2'-5"	2'-7"	2'-11"	2'-10"
6	2'-1"	2'-11"	3'-1"	3'-6"	3'-4"
7	2'-9"	3'-10"	4'-2"	4'-8"	4'-6"
8	3'-8"	5'-1"	5'-5"	6'-2"	5'-10"
9	4'-7"	6'-5"	6'-10"	7'-9"	7'-5"

- Table 1: Black bar, 0.8 Class C
- Table 2: Black bar, Top bar lap, 0.8 Class C
- Table 3: Epoxy bar, 0.8 Class C
- Table 4: Epoxy bar, Top bar lap, 0.8 Class C
- Table 5: Epoxy bar, Top bar lap, Class B

Threaded splicer bar length = min. lap length + 1/2" + thread length

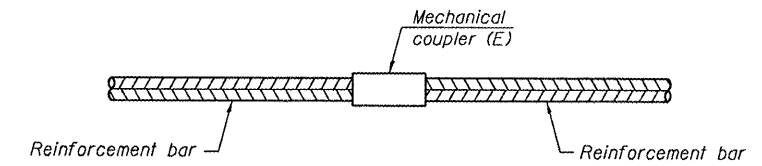
* Epoxy not required on Bar Splicer Assembly components used in conjunction with black bars.

Location	Bar size	No. assemblies required	Table for minimum lap length
Deck	#7	8	3
Deck	#6	5	3
Hatch Block	#6	4	3



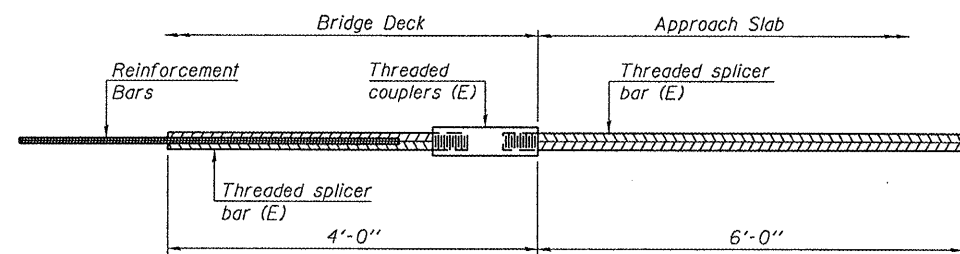
INSTALLATION AND SETTING METHODS

"A": Set bar splicer assembly by means of a template bolt.
 "B": Set bar splicer assembly by nailing to wood forms or cementing to steel forms.
 (E) : Indicates epoxy coating.



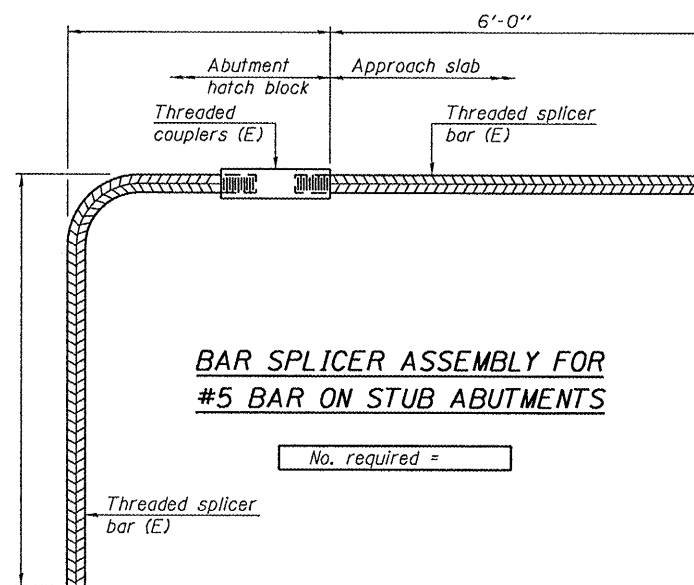
STANDARD MECHANICAL SPLICER

Location	Bar size	No. assemblies required



BAR SPLICER ASSEMBLY FOR #5 BAR ON INTEGRAL OR SEMI-INTEGRAL ABUTMENTS

No. required =



BAR SPLICER ASSEMBLY FOR #5 BAR ON STUB ABUTMENTS

No. required =

NOTES

Splicer bars shall be deformed with threaded ends and have a minimum 60 ksi yield strength.
 All reinforcement shall be lapped and tied to the splicer bars.
 Bar splicer assemblies shall be epoxy coated according to the requirements for reinforcement bars. See Section 508 of the Standard Specifications.
 See special provision for Mechanical Splicers.
 See approved list of bar splicer assemblies and mechanical splicers for alternatives.

BSD-1

7-1-10

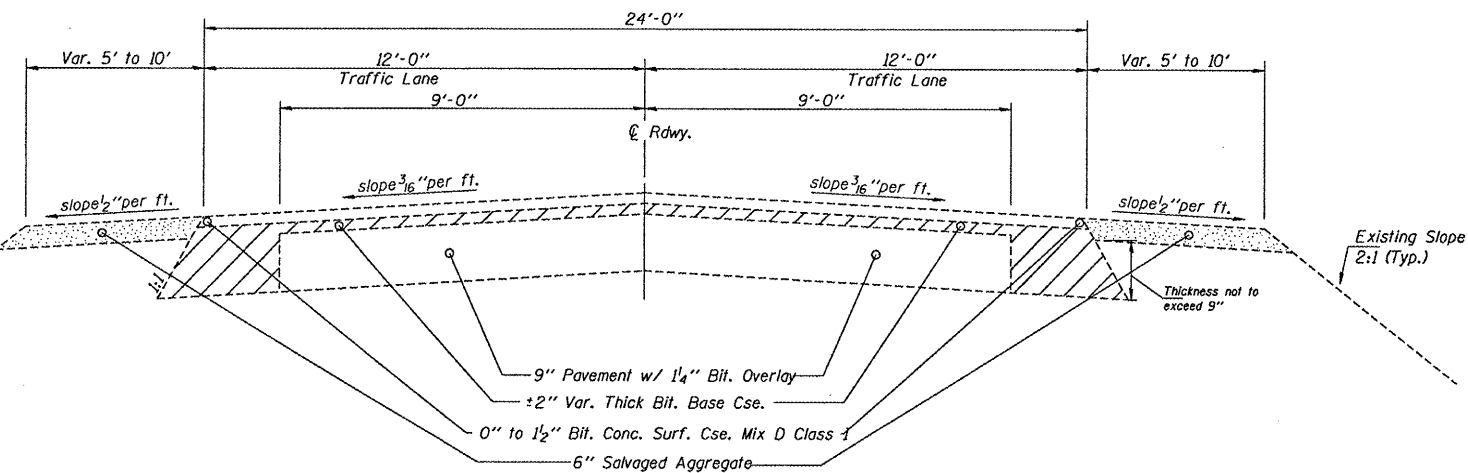
DESIGNED <i>IJL</i>	EXAMINED	DATE	MARCH 30, 2011
CHECKED <i>ATH</i>	ACTING ENGINEER OF STRUCTURAL SERVICES		
DRAWN <i>baliva</i>	PASSED		
CHECKED <i>IJL ATH</i>	ACTING ENGINEER OF BRIDGES AND STRUCTURES		

STATE OF ILLINOIS
DEPARTMENT OF TRANSPORTATION

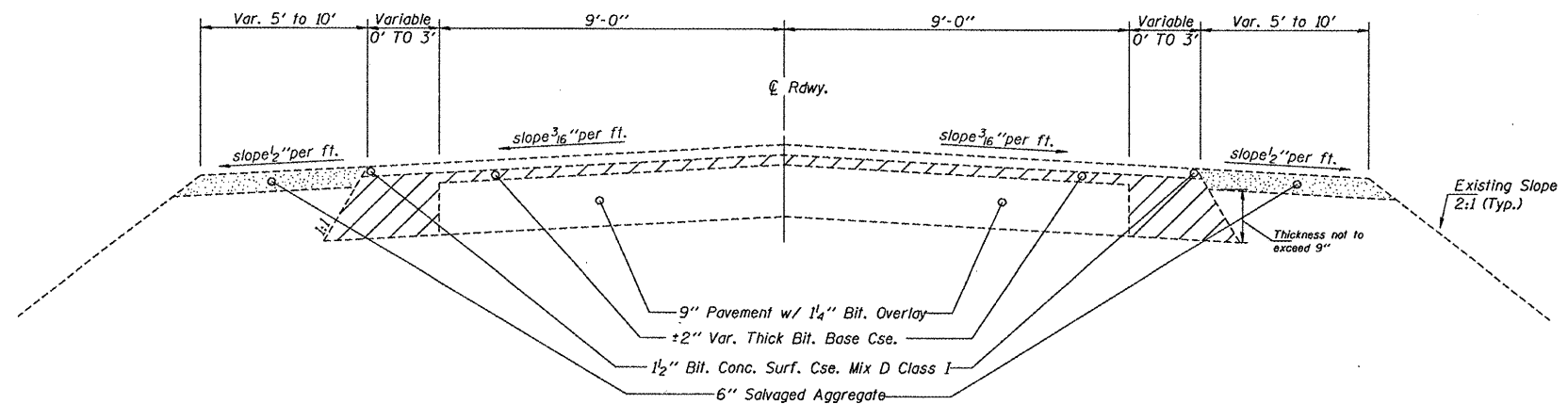
BAR SPLICER ASSEMBLY AND MECHANICAL SPLICER DETAILS
SN 036-0010

F.A.P. RTE. 534	SECTION (111BR1)	COUNTY HENDERSON	TOTAL SHEETS 18	SHEET NO. 100
CONTRACT NO. 68998			ILLINOIS FED. AID PROJECT	

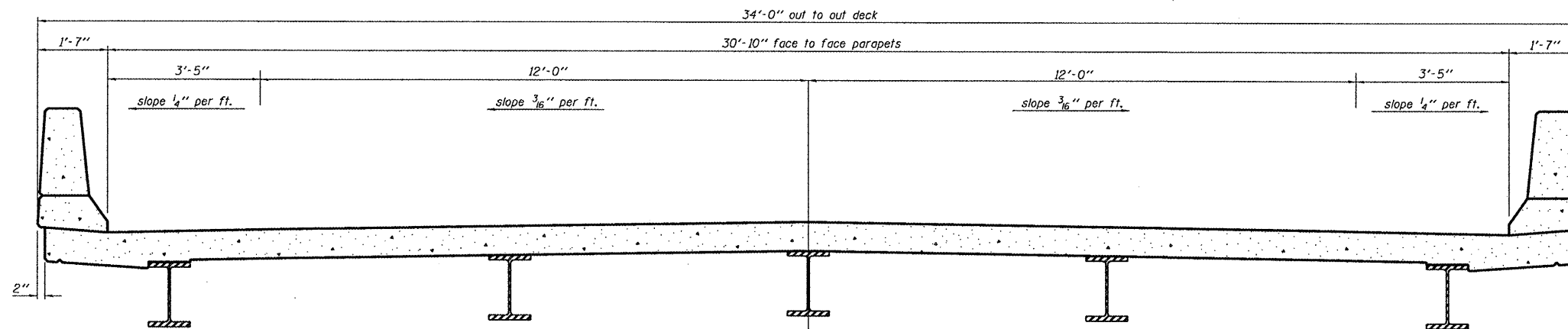
SHEET NO. 5 OF 5 SHEETS



TYPICAL SECTION
 STA. 91+25 TO STA. 93+50.10
 STA. 97+43.90 TO STA. 99+00



TYPICAL SECTION
 STA. 90+50 TO STA. 91+25
 STA. 99+00 TO STA. 99+75



CROSS SECTION
 (Looking East)

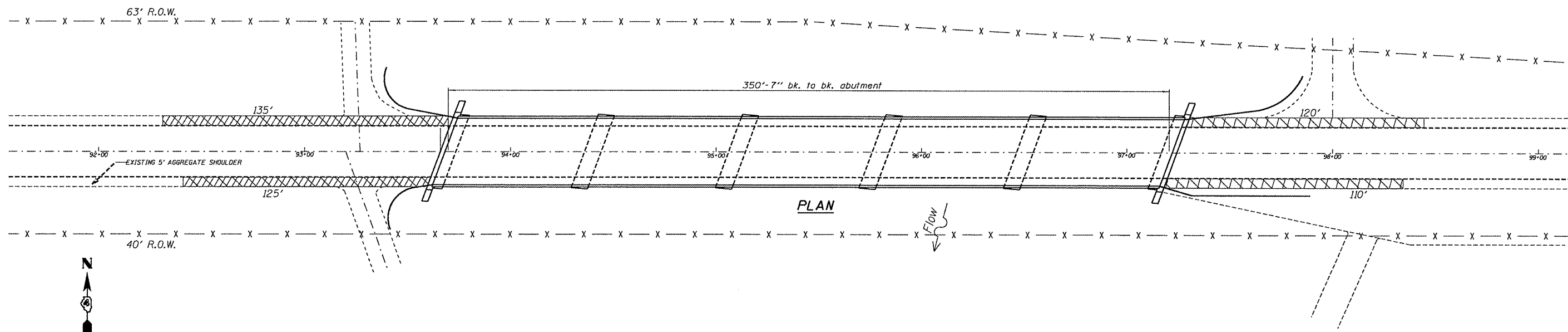
FILE NAME =	USER NAME = *USER*	DESIGNED - D CORP	REVISED -
#FILE#		DRAWN - D CORP	REVISED -
	PLOT SCALE = *SCALE*	CHECKED - C JONES	REVISED -
	PLOT DATE = *DATE*	DATE - 2/10/11	REVISED -

STATE OF ILLINOIS
 DEPARTMENT OF TRANSPORTATION

EXISTING TYPICAL SECTIONS
 SN 036-0037


SCALE: SHEET NO. 11 OF 18 SHEETS STA. 90+50 TO STA. 99+75

F.A.P. RTE.	SECTION	COUNTY	TOTAL SHEETS	SHEET NO.
657	(116C1-BR1-1)	HENDERSON	18	11
BRIDGE JOINT REPL.			CONTRACT NO. 68998	
ILLINOIS FED. AID PROJECT				



PLAN

BILL OF MATERIAL

LEGEND
 Proposed Shoulder Removal/Replacement

Item	Unit	Total
Earth Excavation Widening	Cu.Yd.	68
HMA Base Course Widening, 9"	Sq.Yd.	272

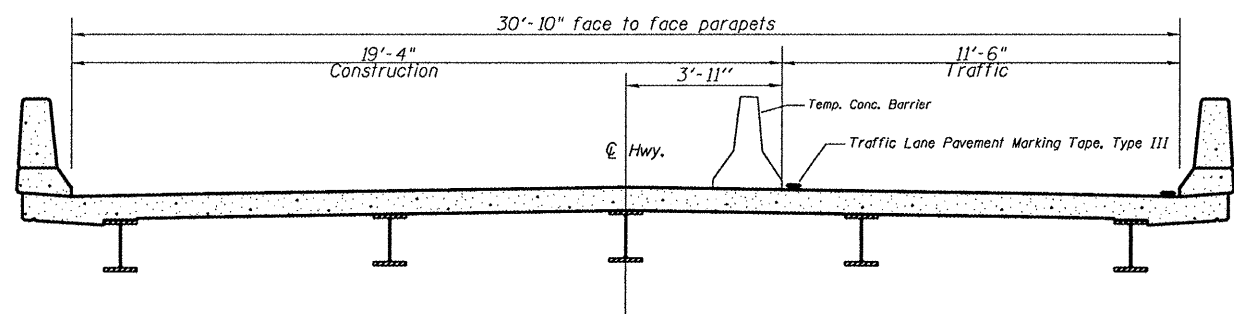
FILE NAME =	USER NAME = *USER*	DESIGNED - D CORP	REVISED -
FILEL		DRAWN - D CORP	REVISED -
	PLOT SCALE = *SCALE*	CHECKED - C JONES	REVISED -
	PLOT DATE = *DATE*	DATE - 2/10/11	REVISED -

**STATE OF ILLINOIS
 DEPARTMENT OF TRANSPORTATION**

**PROPOSED SHOULDER REMOVAL/REPLACEMENT
 SN 036-0037**
 SCALE: _____ SHEET NO. 13 OF 18 SHEETS STA. 90+50 TO STA. 99+75

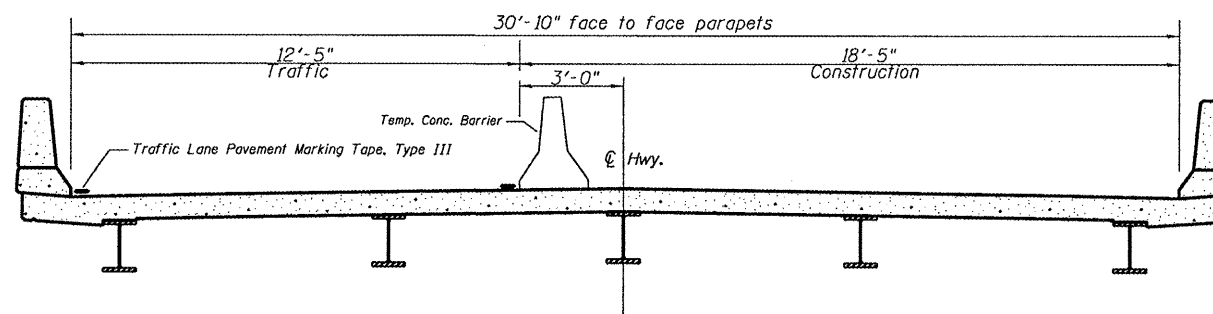
F.A.P. RTE.	SECTION	COUNTY	TOTAL SHEETS	SHEET NO.
657	(116C1-BR1)-1	HENDERSON	18	12
BRIDGE JOINT REPL.			CONTRACT NO. 68998	
ILLINOIS FED. AID PROJECT				

STRUCTURE CARRYING IL164 OVER HENDERSON CRK



CROSS SECTION
(Looking East)

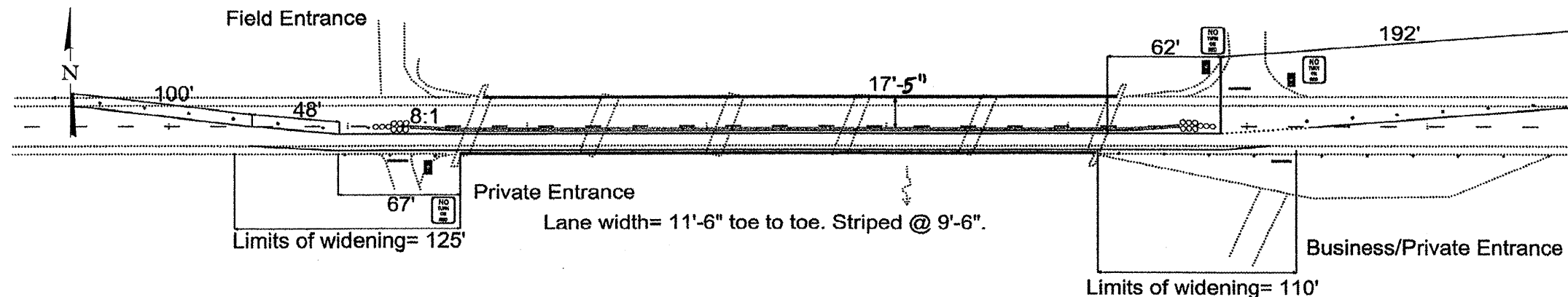
STAGE 1



CROSS SECTION
(Looking East)

STAGE 2

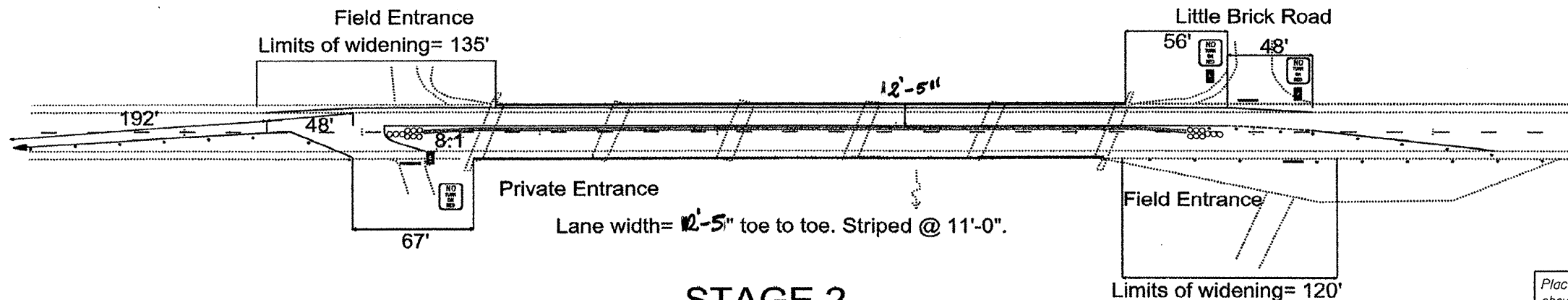
STAGE 1



Signals needed for both access points.
Little Brick Road

BOTH STAGES USED IN CONJUNCTION WITH 701321.
STRIPING SHOWN SHALL BE INCLUSIVE OF STD. 701321.
5 (five) Signal locations required.

STAGE 2



Signals needed for both access points.

Place rumble strips East of the bridge as shown in STD. 701321 or as directed by the engineer

FILE NAME =	USER NAME = #USER#	DESIGNED - D CORP	REVISED -	STATE OF ILLINOIS DEPARTMENT OF TRANSPORTATION	PROPOSED TRAFFIC CONTROL SN 036-0037		F.A.P. RTE.	SECTION	COUNTY	TOTAL SHEETS	SHEET NO.	
#FILE#		DRAWN - D CORP	REVISED -		SCALE: _____	SHEET NO. 14 OF 18 SHEETS	STA. 90+50 TO STA. 99+75	657	(116C1-BR)-1	HENDERSON	18	13
	PLOT SCALE = #SCALE#	CHECKED - C JONES	REVISED -					BRIDGE JOINT REPL.		CONTRACT NO. 68998		
	PLOT DATE = #DATE#	DATE - 2/10/11	REVISED -					ILLINOIS FED. AID PROJECT				

GENERAL NOTES

Existing reinforcement bars extending into the removal area shall be cleaned, straightened and incorporated into the new construction. Any reinforcement bars that are damaged during concrete removal shall be replaced with an approved bar splicer or anchorage system. Cost included with Concrete Removal.

Joint openings shall be adjusted according to Article 520.04 of the Std. Specs. when the deck is poured at an ambient temperature other than 50° F.

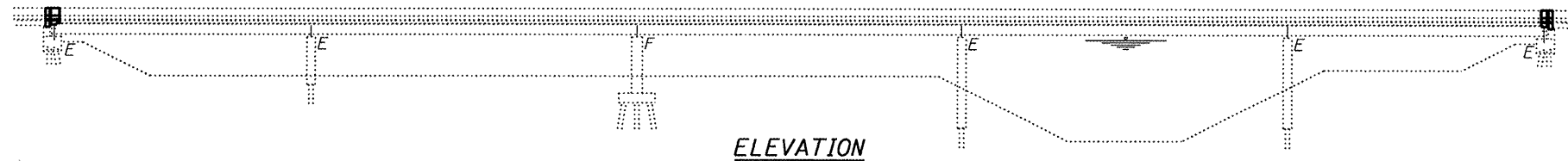
Reinforcement bars shall conform to the requirements of ASTM A 706 Gr 60. See Special Provisions.

Reinforcement bars designated (E) shall be epoxy coated.

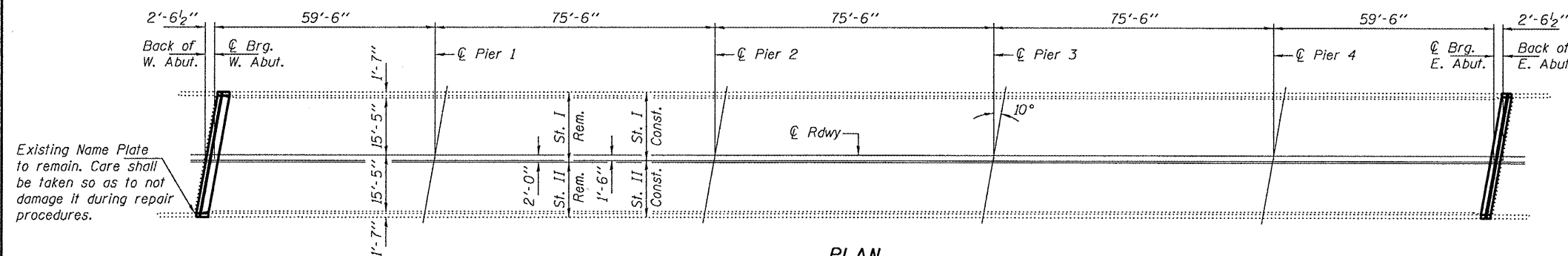
Plan dimensions and details relative to existing plans are subject to nominal construction variations. The Contractor shall field verify existing dimensions and details affecting new construction and make necessary approved adjustments prior to construction or ordering of materials. Such variations shall not be cause for additional compensation for a change in scope of the work, however, the Contractor will be paid for the quantity actually furnished at the unit price bid for the work.

The deck surface shall have its final finish tined according to Article 420.09(e)(1) of the Standard Specifications. Cost included with Concrete Superstructure.

The existing structural steel coating contains lead. The Contractor shall take appropriate precautions to deal with the presence of lead on this project.



ELEVATION



PLAN



EXPIRES 11-30-2012

DESIGNED <i>Alan J. Perry</i>	EXAMINED <i>Jay F. [Signature]</i>	DATE MARCH 30, 2011
CHECKED <i>Adrian T. Holloway</i>	PASSED <i>[Signature]</i>	
DRAWN <i>ballva</i>		
CHECKED <i>I JL ATH</i>		

STATE OF ILLINOIS
DEPARTMENT OF TRANSPORTATION

PLAN AND ELEVATION
FA 657 OVER HENDERSON CREEK
SN 036-0037

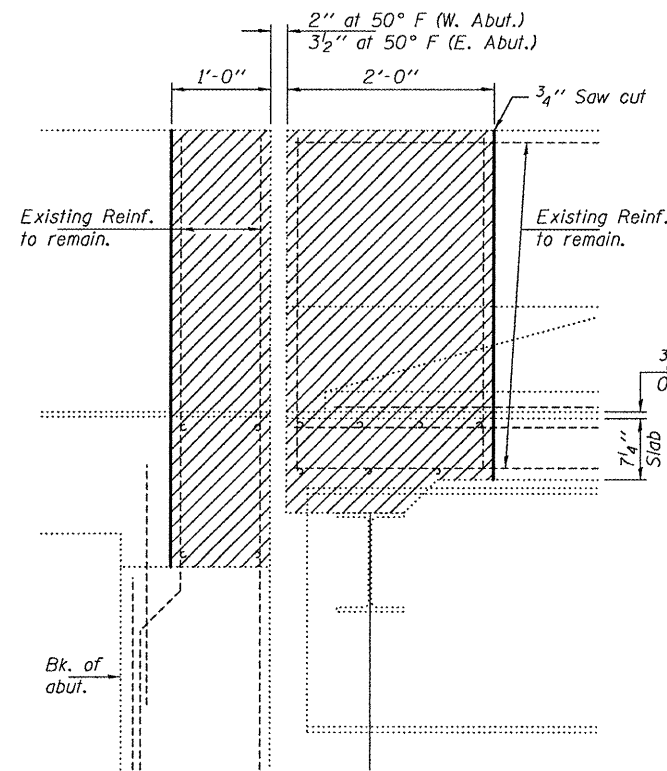
SHEET NO. 1 OF 4 SHEETS

TOTAL BILL OF MATERIAL

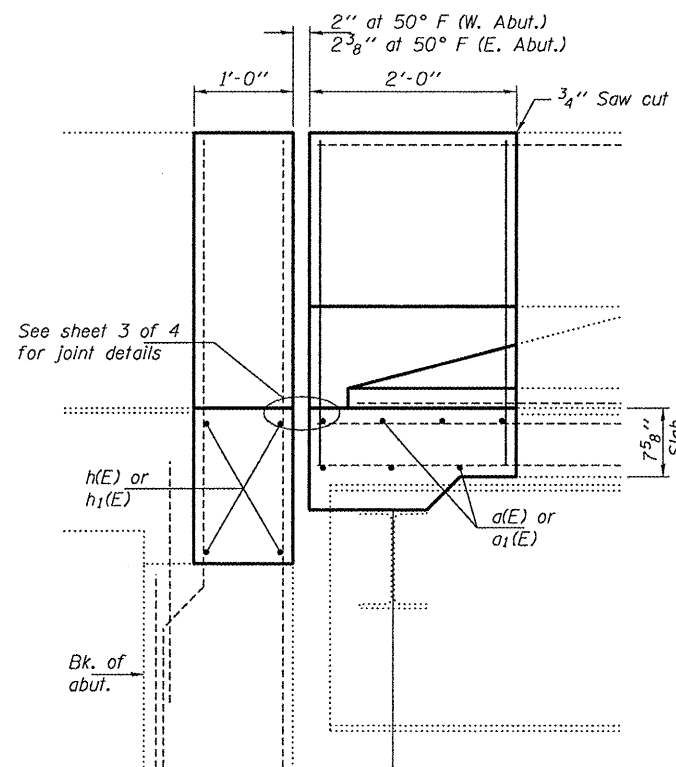
ITEM	UNIT	QUANTITY
Concrete Removal	Cu. Yd.	10.8
Concrete Superstructure	Cu. Yd.	10.9
Preformed Joint Strip Seal	Foot	67
Reinforcement Bars, Epoxy Coated	Pound	1110
* Protective Coat	Sq. Yd.	26.1
Bar Splicers	Each	24

* On new concrete only

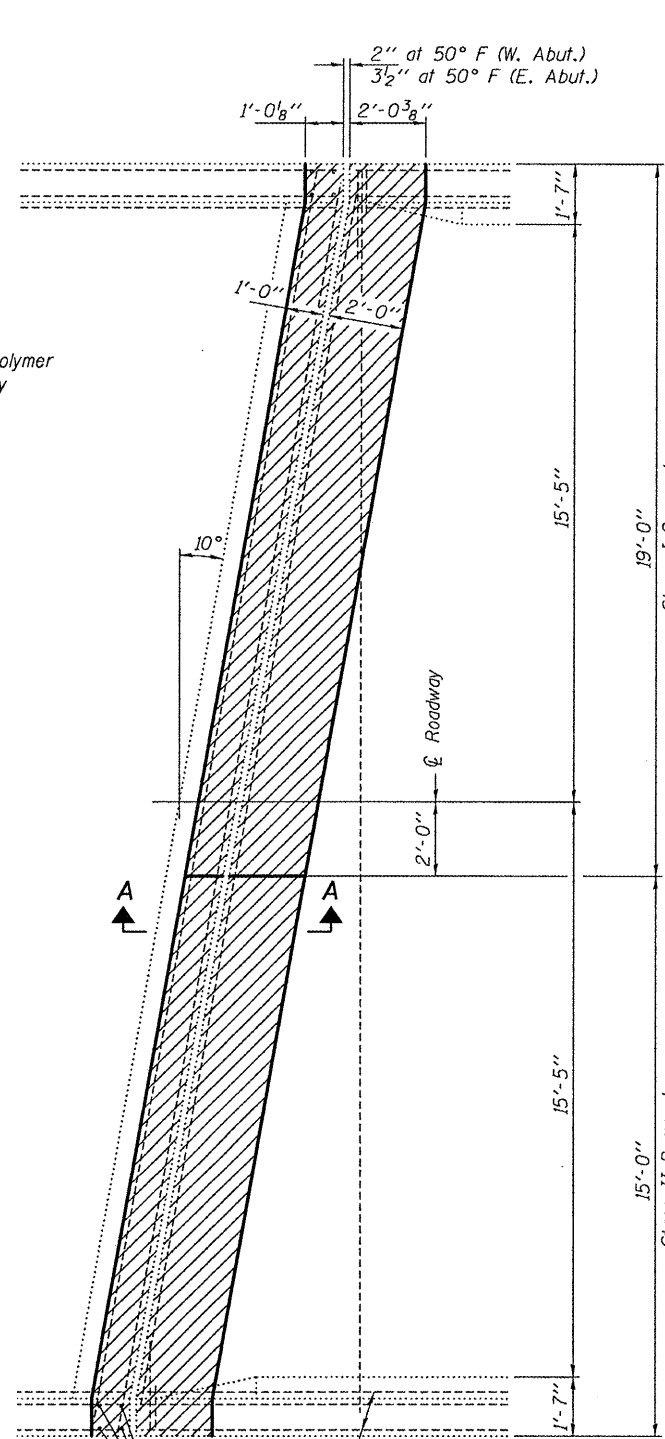
F.A. RTE. 657	SECTION (116C1-BR1-1)	COUNTY HENDERSON	TOTAL SHEETS 18	SHEET NO. 14
			CONTRACT NO. 68998	
ILLINOIS FED. AID PROJECT				



SECTION A-A
(Dimensions at RT L's to end of deck)



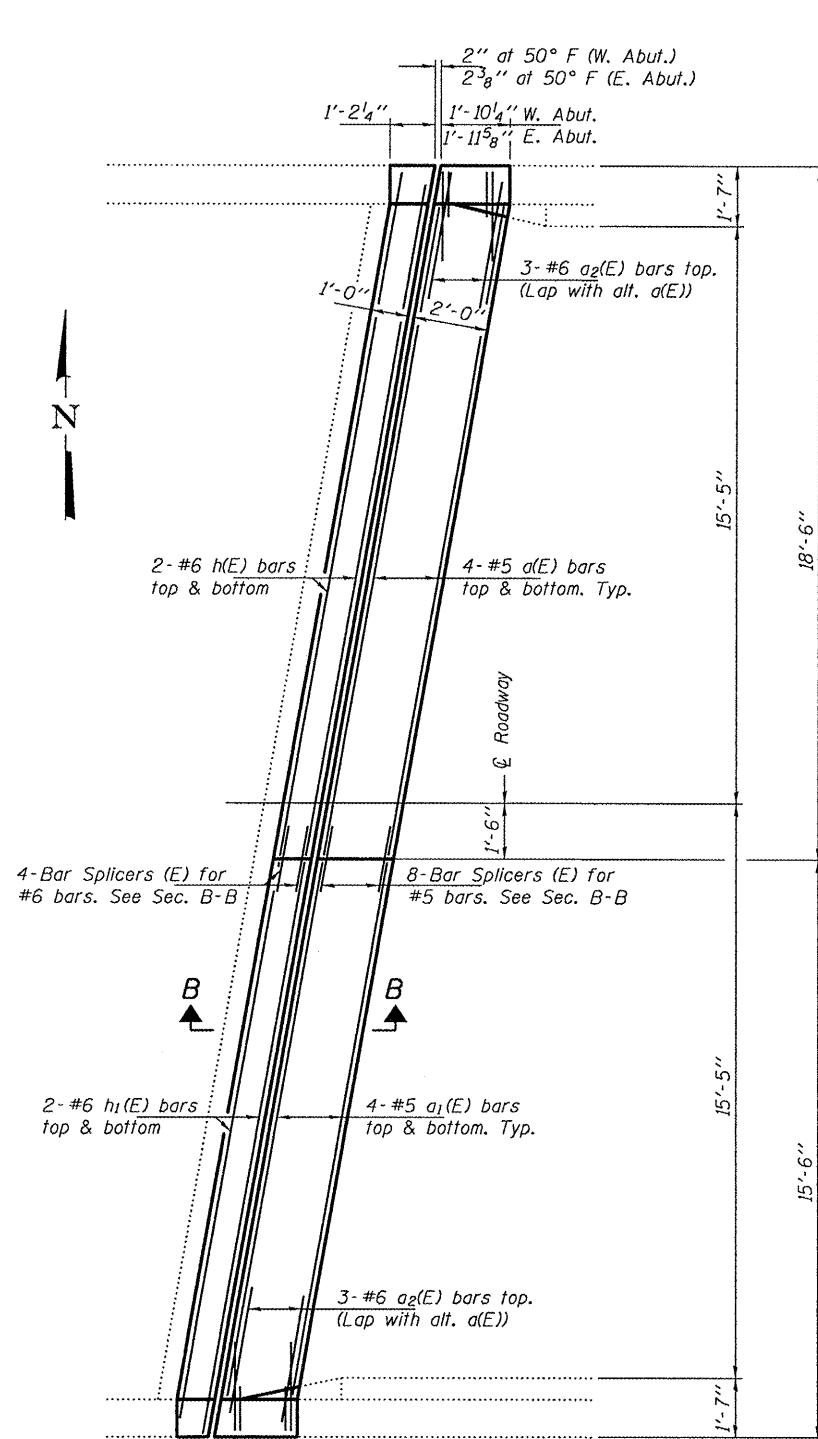
SECTION B-B
(Dimensions at RT L's to end of deck)



REMOVAL PLAN

West abutment shown.
East abutment similar by rotation, except as shown.

Notes:
Hatched areas indicate removal.
Removal of existing joint is included with Concrete Removal.

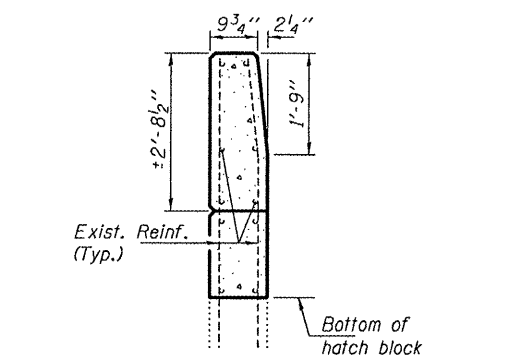


REPLACEMENT PLAN

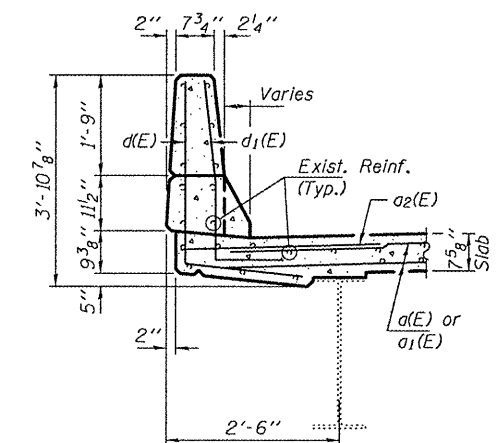
West abutment shown.
East abutment similar by rotation, except as shown.

BAR d(E)

BAR d1(E)



SECTION THRU APPROACH PARAPET



TYPICAL PARAPET SECTION

BILL OF MATERIAL

Bar	No.	Size	Length	Shape
a(E)	16	#5	17'-8"	—
a1(E)	16	#5	14'-7"	—
a2(E)	12	#6	4'-0"	—
d(E)	12	#4	4'-10"	L
d1(E)	12	#5	4'-2"	L
h(E)	8	#6	18'-6"	—
h1(E)	8	#6	15'-3"	—
Bar Splicers		Each	24	
Concrete Removal		Cu. Yd.	10.8	
Concrete Superstructure		Cu. Yd.	10.9	
Reinforcement Bars, Epoxy Coated		Lbs.	1110	

DESIGNED IJL
CHECKED ATH
DRAWN baliva
CHECKED IJL ATH

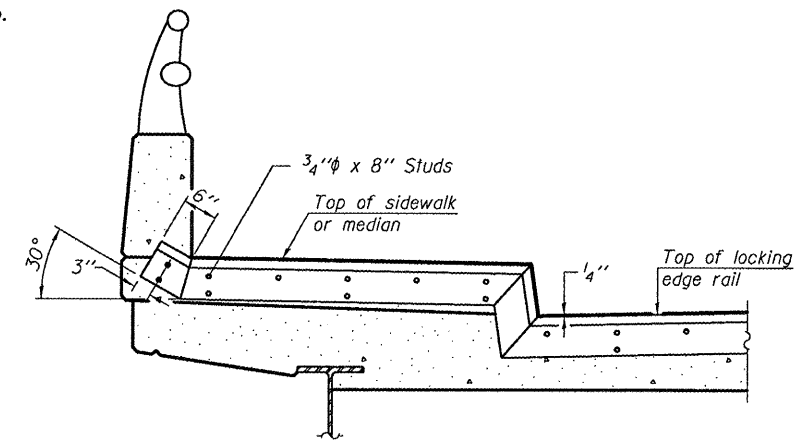
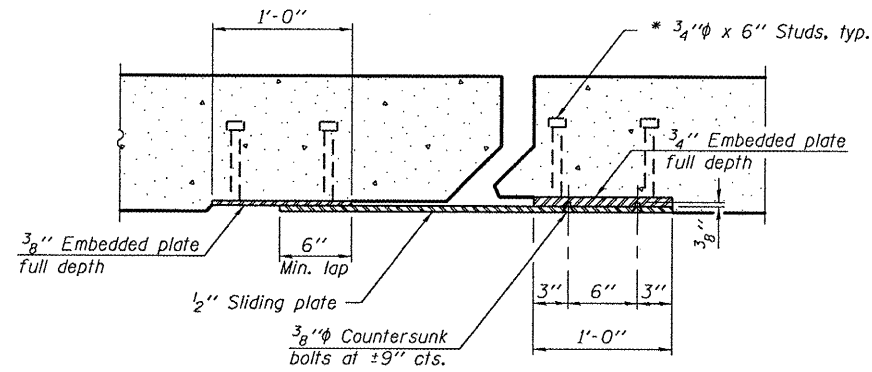
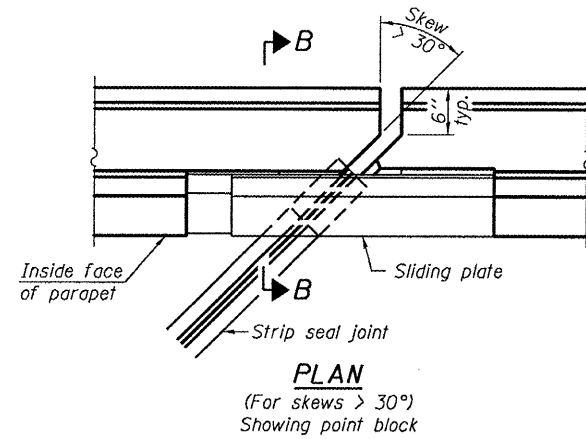
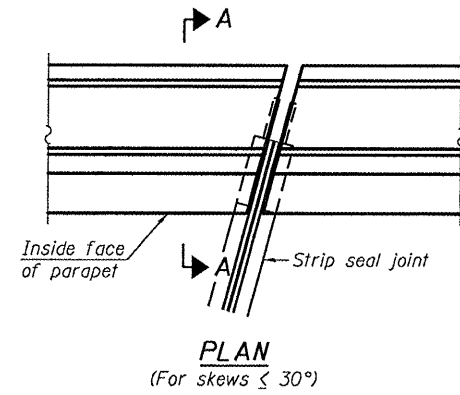
EXAMINED *James F. J...* DATE MARCH 30, 2011
ACTING ENGINEER OF STRUCTURAL SERVICES
PASSED *...*
ACTING ENGINEER OF BRIDGES AND STRUCTURES

STATE OF ILLINOIS
DEPARTMENT OF TRANSPORTATION

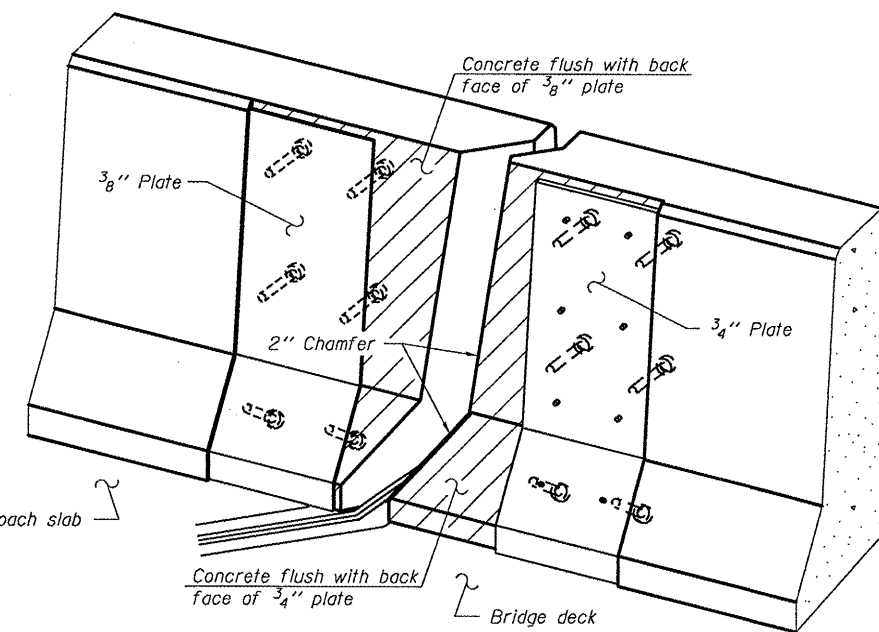
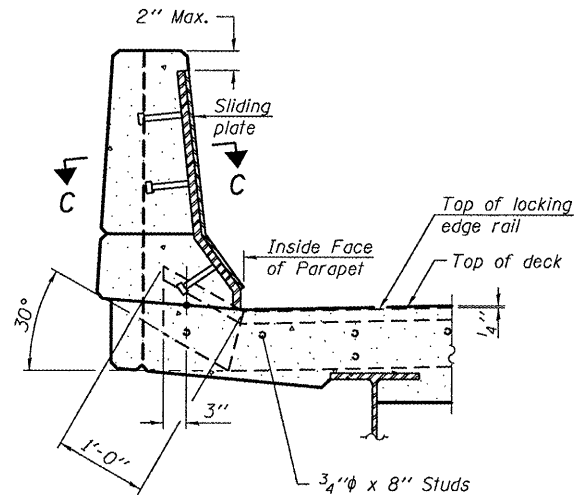
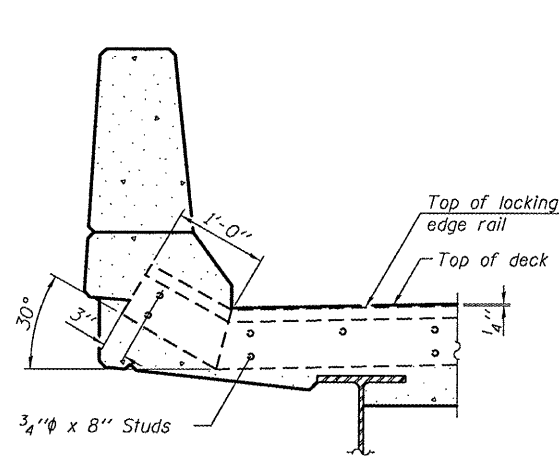
REPAIR DETAILS
SN 036-0037

F.A.P. R.T.E. 534 SECTION 111BR1 COUNTY HENDERSON TOTAL SHEETS 16 SHEET NO. 15 CONTRACT NO. 68998 ILLINOIS FED. AID PROJECT

SHEET NO. 2 OF 4 SHEETS



TYPICAL END TREATMENT AT SIDEWALK OR MEDIAN
Shorter plates with a single row of studs at 12" cts. may be necessary on medians which are shallower than 9". See manufacturer's recommendation.



Notes:
The strip seal shall be made continuous and shall have a minimum thickness of 1/4". The configuration of the strip seal shall match the configuration of the Locking Edge Rails. Open or "webbed" strip seal gland configurations are not permitted. The gland shall be sized for a maximum rated movement of 4 inches.

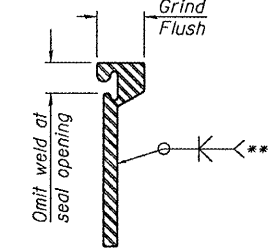
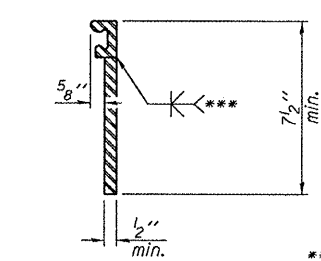
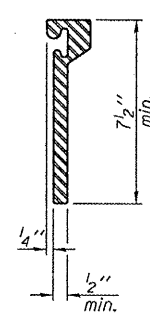
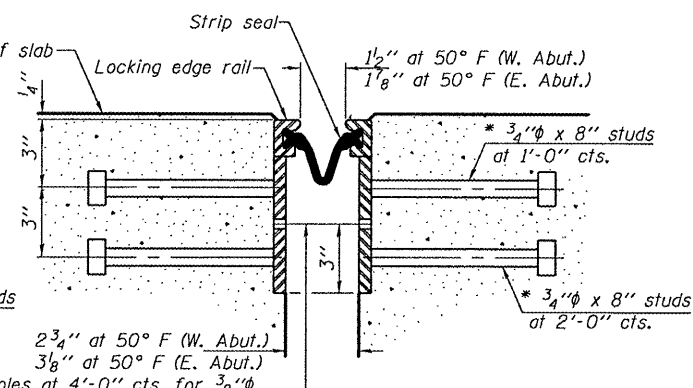
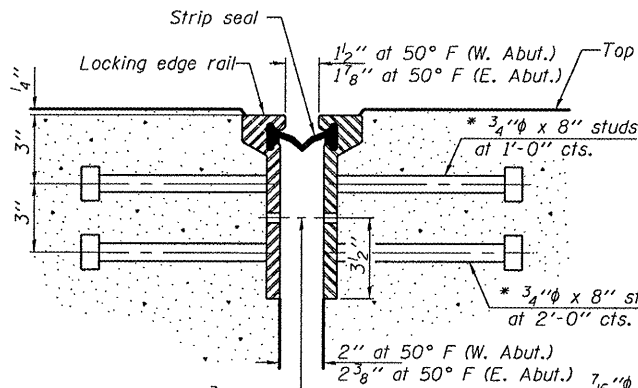
The Locking Edge Rails depicted are conceptual only, except for the minimum dimensions shown. The actual configuration of the Locking Edge Rails and matching strip seal may vary from manufacturer to manufacturer. Flanged edge rails will not be allowed. Locking Edge Rails may be spliced at slope discontinuities.

The manufacturer's recommended installation methods shall be followed.

The joint opening and deck dimensions detailed on the superstructure are based on a rolled rail expansion joint. If the Contractor elects to use the welded rail expansion joint, the opening and deck dimensions shall be modified according to the dimensions detailed on this sheet. Required modifications shall be made at no additional cost to the State.

All steel components shall be galvanized after fabrication according to Article 520.03 of the Standard Specifications. Maximum space between rail segments at stage lines shall be 3/16", sealed with a suitable sealant.

Parapet plates and anchorage studs for skews $> 30^\circ$ included in the cost of Preformed Joint Strip Seal.



*** Back gouge not required if complete joint penetration is verified by mock-up.

ROLLED EXTRUDED RAIL
WELDED RAIL

LOCKING EDGE RAIL SPLICE

The inside of the locking edge rail groove shall be free of weld residue. Rolled rail shown, welded rail similar.

LOCKING EDGE RAILS

BILL OF MATERIAL

Item	Unit	Total
Preformed Joint Strip Seal	Foot	67

* Granular or solid flux filled headed studs conforming to Article 1006.32 of the Std. Specs., automatically end welded.

EJ-SSJ

7-1-10

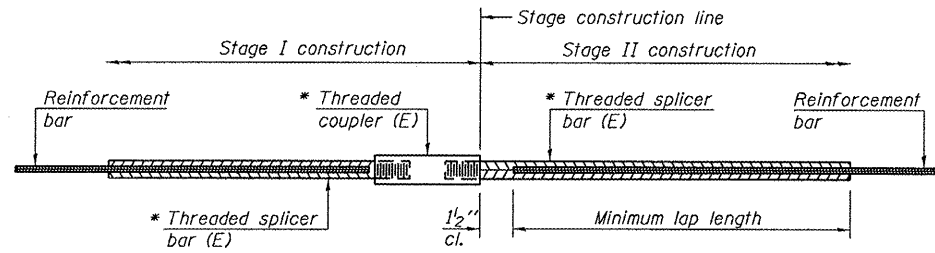
DESIGNED IJL	EXAMINED	DATE MARCH 30, 2011
CHECKED ATH	PASSED	
DRAWN baliva		
CHECKED IJL ATH		

STATE OF ILLINOIS
DEPARTMENT OF TRANSPORTATION

PREFORMED JOINT STRIP SEAL
SN 036-0037

SHEET NO. 3 OF 4 SHEETS

F.A.P. RTE. 534	SECTION (1111B1)	COUNTY HENDERSON	TOTAL SHEETS 18	SHEET NO. 16
			CONTRACT NO. 68998	
ILLINOIS FED. AID PROJECT				



STANDARD BAR SPLICER ASSEMBLY

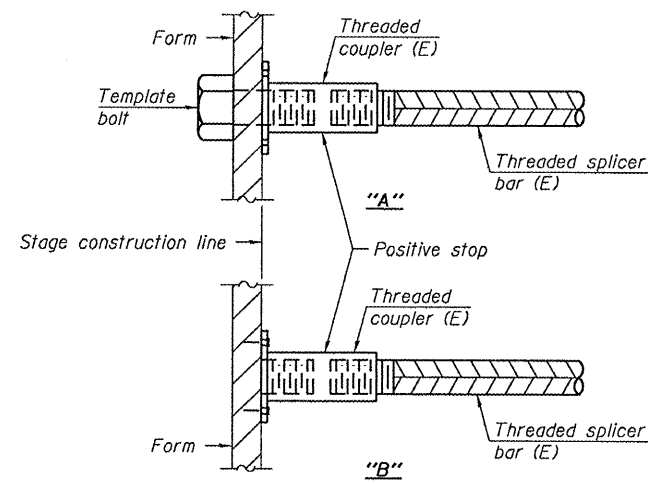
Bar size to be spliced	Minimum Lap Lengths				
	Table 1	Table 2	Table 3	Table 4	Table 5
3, 4	1'-5"	1'-11"	2'-1"	2'-4"	2'-3"
5	1'-9"	2'-5"	2'-7"	2'-11"	2'-10"
6	2'-1"	2'-11"	3'-1"	3'-6"	3'-4"
7	2'-9"	3'-10"	4'-2"	4'-8"	4'-6"
8	3'-8"	5'-1"	5'-5"	6'-2"	5'-10"
9	4'-7"	6'-5"	6'-10"	7'-9"	7'-5"

- Table 1: Black bar, 0.8 Class C
- Table 2: Black bar, Top bar lap, 0.8 Class C
- Table 3: Epoxy bar, 0.8 Class C
- Table 4: Epoxy bar, Top bar lap, 0.8 Class C
- Table 5: Epoxy bar, Top bar lap, Class B

Threaded splicer bar length = min. lap length + 1/2" + thread length

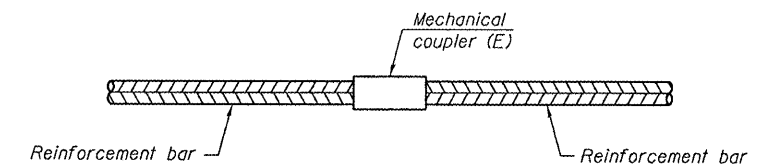
* Epoxy not required on Bar Splicer Assembly components used in conjunction with black bars.

Location	Bar size	No. assemblies required	Table for minimum lap length
Deck	#5	16	3
Hatch Block	#6	8	3



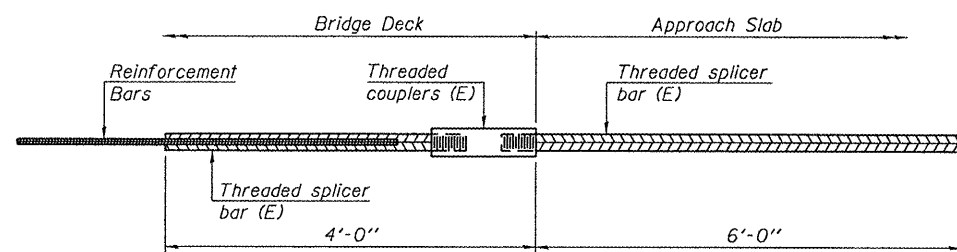
INSTALLATION AND SETTING METHODS

"A" :Set bar splicer assembly by means of a template bolt.
 "B" :Set bar splicer assembly by nailing to wood forms or cementing to steel forms.
 (E) : Indicates epoxy coating.



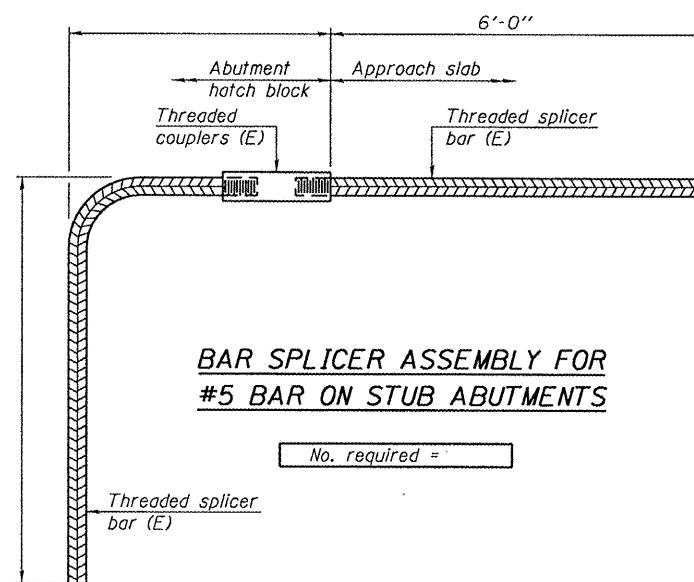
STANDARD MECHANICAL SPLICER

Location	Bar size	No. assemblies required



BAR SPLICER ASSEMBLY FOR #5 BAR ON INTEGRAL OR SEMI-INTEGRAL ABUTMENTS

No. required =



BAR SPLICER ASSEMBLY FOR #5 BAR ON STUB ABUTMENTS

No. required =

NOTES

Splicer bars shall be deformed with threaded ends and have a minimum 60 ksi yield strength.
 All reinforcement shall be lapped and tied to the splicer bars.
 Bar splicer assemblies shall be epoxy coated according to the requirements for reinforcement bars. See Section 508 of the Standard Specifications.
 See special provision for Mechanical Splicers.
 See approved list of bar splicer assemblies and mechanical splicers for alternatives.

BSD-1

7-1-10

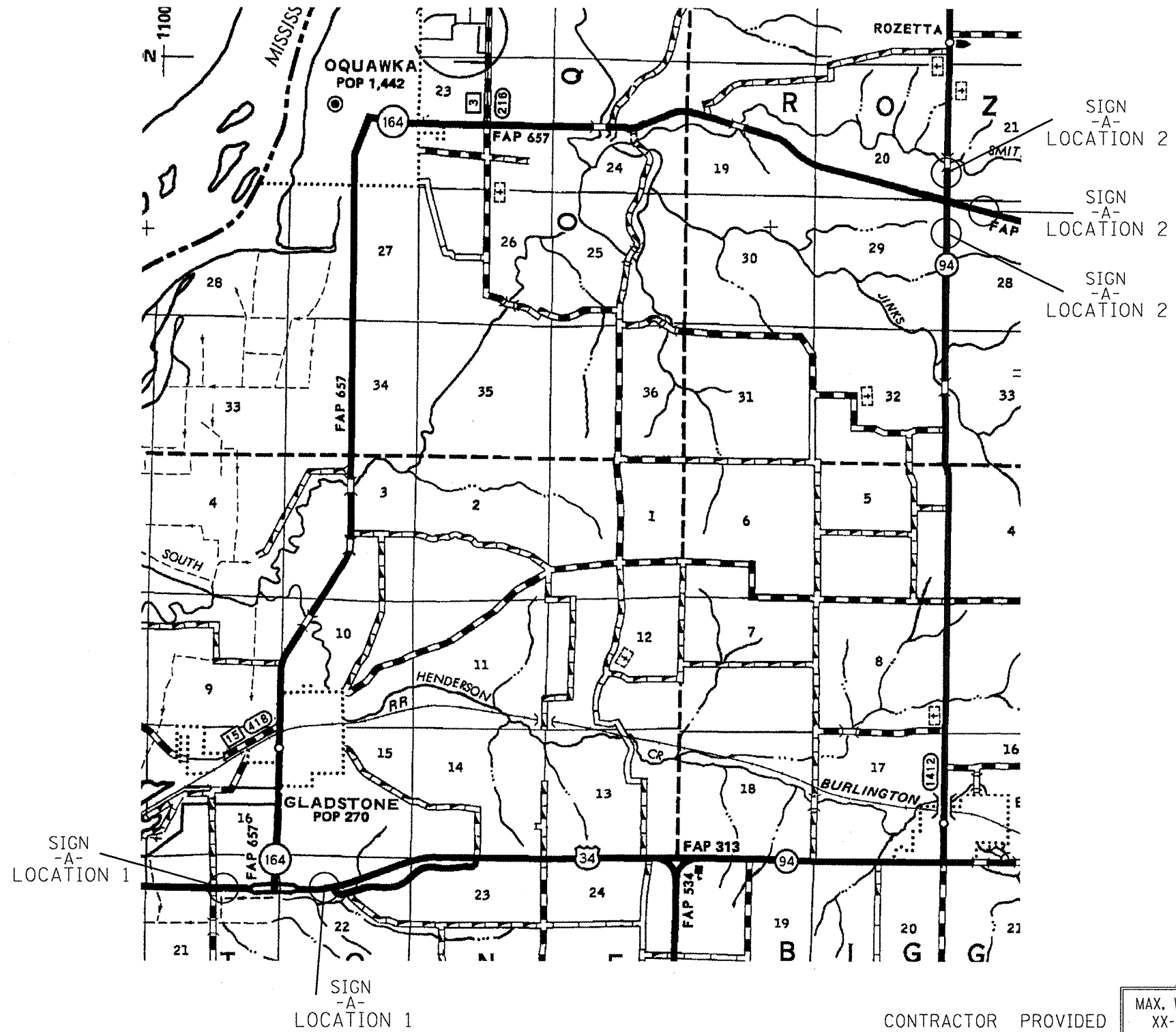
DESIGNED <i>I.J.L.</i>	EXAMINED <i>James F. J. [Signature]</i>	DATE MARCH 30, 2011
CHECKED <i>ATH</i>	ACTING ENGINEER OF STRUCTURAL SERVICES	
DRAWN <i>baliva</i>	PASSED <i>[Signature]</i>	
CHECKED <i>I.J.L. ATH</i>	ACTING ENGINEER OF BRIDGES AND STRUCTURES	

**STATE OF ILLINOIS
DEPARTMENT OF TRANSPORTATION**

**BAR SPLICER ASSEMBLY AND MECHANICAL SPLICER DETAILS
SN 036-0037**

F.A.P. RTE. 534	SECTION (111BR1)	COUNTY HENDERSON	TOTAL SHEETS 18	SHEET NO. 16A
CONTRACT NO. 68998			ILLINOIS FED. AID PROJECT	

SHEET NO. 4 OF 4 SHEETS



SN.036-0010 SIGNING DISTANCES

	SIGN -A-	SIGN -B-
LOCATION 1	2 EA.	NA
LOCATION 2	3 EA.	
LOCATION 3		
LOCATION 4		

CONTRACTOR PROVIDED

MAX. WIDTH
XX-XX
XX MILES

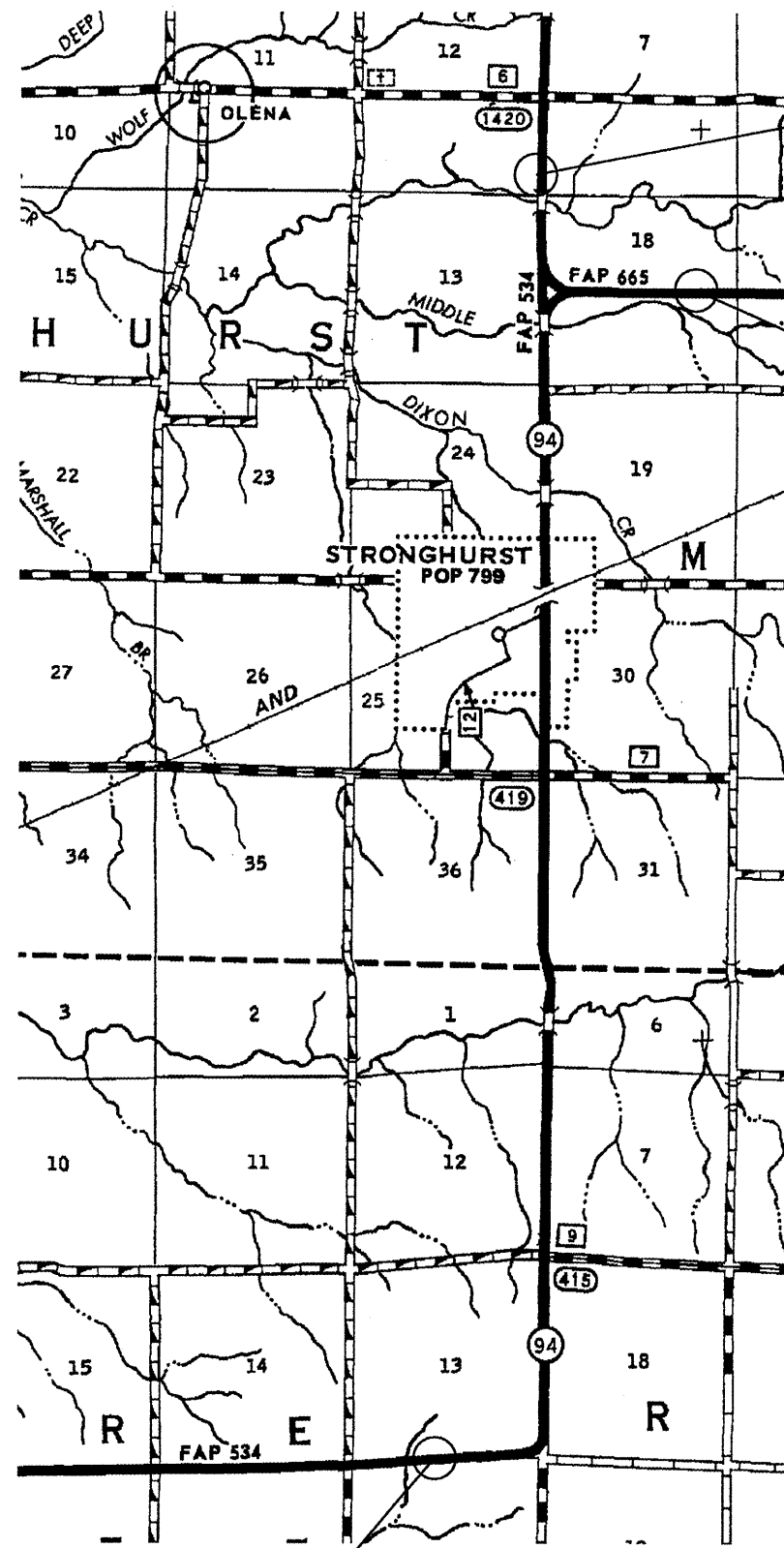
SIGN
-A-

IDOT PROVIDED

IL. 164

SEE SPECIAL PROVISIONS FOR SIGNING DETAILS.

FILE NAME = *FILEL*	USER NAME = *USERS*	DESIGNED - D CORP	REVISED -	STATE OF ILLINOIS DEPARTMENT OF TRANSPORTATION	WIDTH RESTRICTION SIGNING SN 036-0037		F.A.P. RTE. 657	SECTION (116C-BRI-1)	COUNTY HENDERSON	TOTAL SHEETS 18	SHEET NO. 17	
	PLOT SCALE = *SCALE*	CHECKED - C JONES	REVISED -		SCALE: -----	SHEET NO. 17 OF 18 SHEETS	STA. 90+50 TO STA. 99+75	BRIDGE JOINT REPL.		CONTRACT NO. 68998		
	PLOT DATE = *DATE*	DATE - 2/10/11	REVISED -		ILLINOIS FED. AID PROJECT							



SN.036-0037 SIGNING DISTANCES

	SIGN -A-	SIGN -B-
LOCATION 1	2 EA.	NA
LOCATION 2	1 EA.	
LOCATION 3		
LOCATION 4		

CONTRACTOR PROVIDED

MAX. WIDTH
XX-XX
XX MILES

SIGN
-A-

IDOT PROVIDED

IL. 94

SEE SPECIAL PROVISIONS FOR SIGNING DETAILS.

FILE NAME =	USER NAME = *USER*	DESIGNED - D CORP	REVISED -
*FILE#		DRAWN - D CORP	REVISED -
	PLOT SCALE = *SCALE*	CHECKED - C JONES	REVISED -
	PLOT DATE = *DATE*	DATE - 2/10/11	REVISED -

STATE OF ILLINOIS
DEPARTMENT OF TRANSPORTATION

WIDTH RESTRICTION SIGNING
SN 036-0010

SCALE: SHEET NO. 18 OF 18 SHEETS STA. 491+90 TO STA. 492+37

F.A.P. RTE.	SECTION	COUNTY	TOTAL SHEETS	SHEET NO.
534	111BR1	HENDERSON	18	18
BRIDGE JOINT REPL.		CONTRACT NO. 68998		
ILLINOIS FED. AID PROJECT				