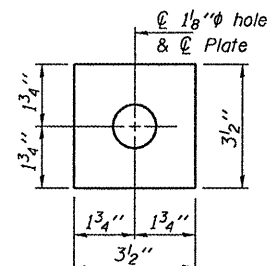
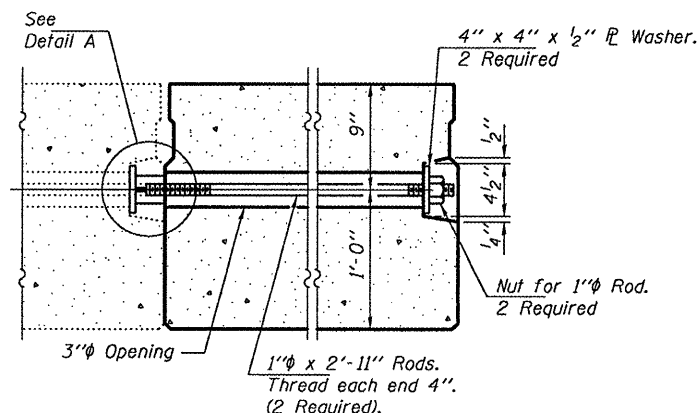


**FABRIC BEARING PAD FABRIC ADJUSTING SHIM**  
**FIXED**  
 Note: Omit holes when using expansion bearings.

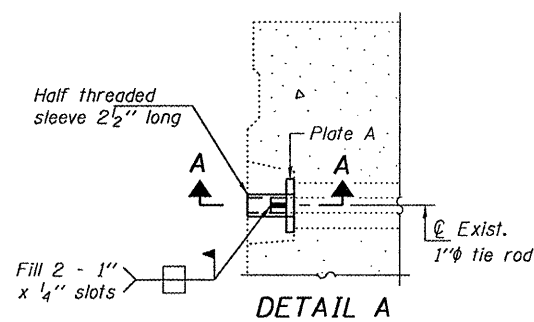


**PLATE A**  
(2 Required)

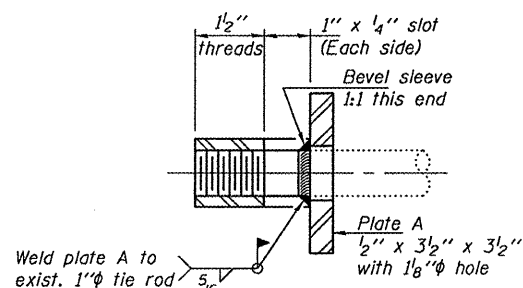


**TRANSVERSE TIE ASSEMBLY**

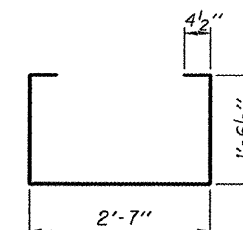
\*\*Limits of HMA Surface Removal. Existing waterproofing to remain. Lap new waterproofing 6" over existing waterproofing.



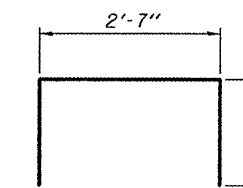
**DETAIL A**



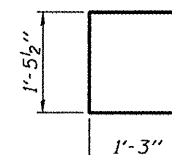
**SECTION A-A**  
(2 Required)



**BAR S1(E)**

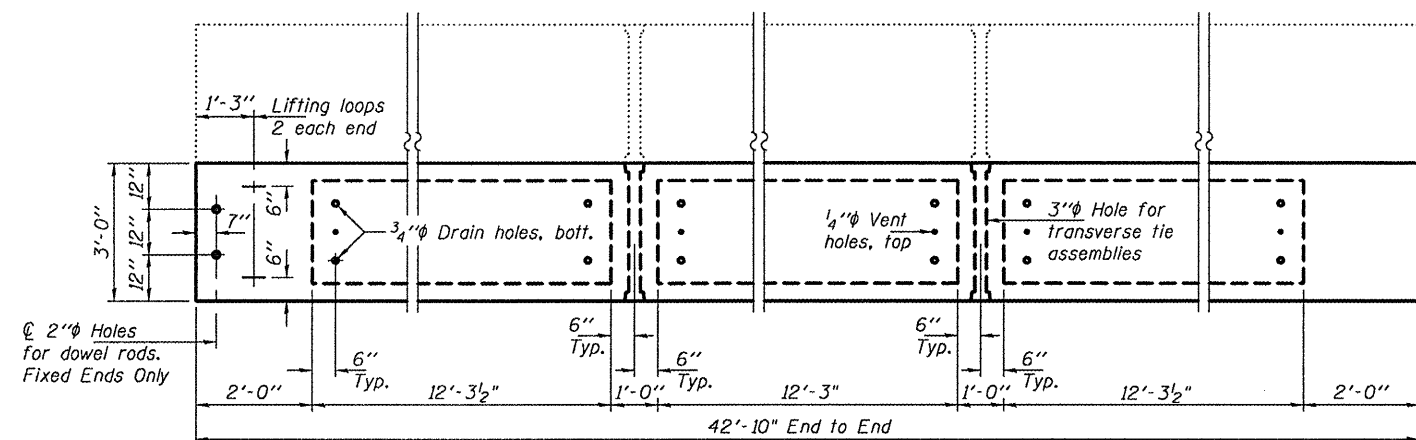


**BAR S2(E)**

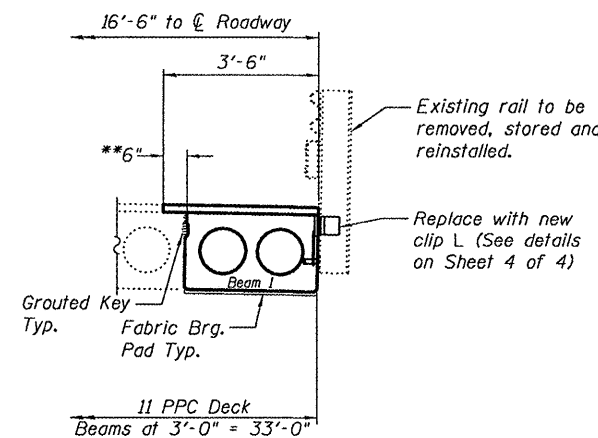


**BAR U1(E)**

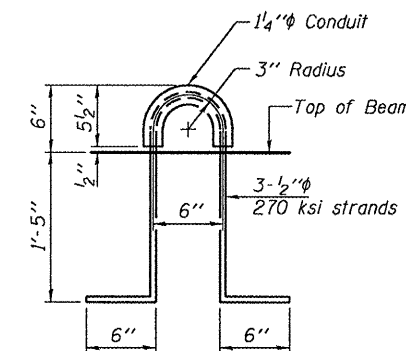
**BAR U2(E)**



**PLAN**



**DECK CROSS SECTION**  
(Looking West)



**LIFTING LOOP DETAIL**

**NOTES**

Prestressing steel shall be uncoated high strength, low relaxation 7-wire strand, Grade 270. The nominal diameter shall be 1/2" and the nominal cross-sectional area shall be 0.153 sq. in. The 1" rods in the transverse tie assembly shall be tightened to a snug fit and the threads set. Pockets on exterior faces of bridge shall be filled with grout after transverse tie assembly is in place. Reinforcement bars shall conform to ASTM A 706 (1L MOD), Grade 60. (See Special Provisions). Two 1/2" fabric adjusting shims of the dimensions shown shall be provided for each bearing pad location. A minimum 2 1/2" lifting pin shall be used to engage the lifting loops during handling. Corrosion Inhibitor, per Article 1020.05(b)(12) and 1021.06 of the Standard Specifications, shall be used in the concrete for precast prestressed concrete deck beams. Compressive strength of prestressed concrete, f'c, shall be 5000 psi. Compressive strength of prestressed concrete at release, f'ci, shall be 4000 psi.

**BILL OF MATERIAL**

Precast Prestressed Conc. Deck Bms. (21" depth)	Sq. Ft.	129
---	---------	-----

DESIGNED - V.H.V.	CHECKED - I.J.L.	DRAWN - Drew Christopher	CHECKED - V.H.V. I.J.L.
-------------------	------------------	--------------------------	-------------------------

EXAMINED - <i>Jayne F. J...</i>	DATE - MARCH 14, 2011
PASSED - <i>Carl...</i>	

**STATE OF ILLINOIS**  
**DEPARTMENT OF TRANSPORTATION**

**BEAM DETAILS**  
**SN 036-0003**

SHEET NO. 3 OF 4 SHEETS

F.A. RTE. 45	SECTION (6BR)I	COUNTY Henderson	TOTAL SHEETS 9	SHEET NO. 8C
CONTRACT NO. 68A17			ILLINOIS FED. AID PROJECT	