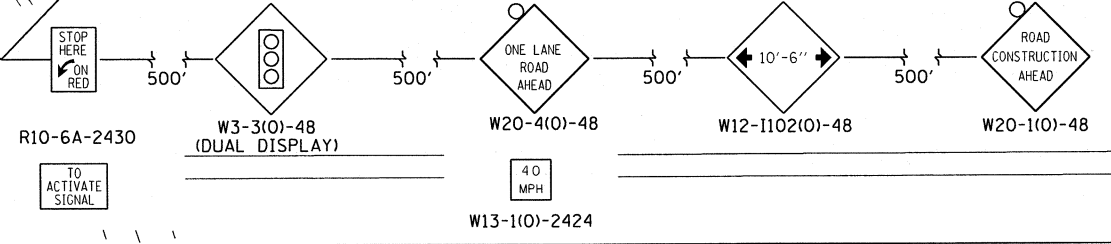
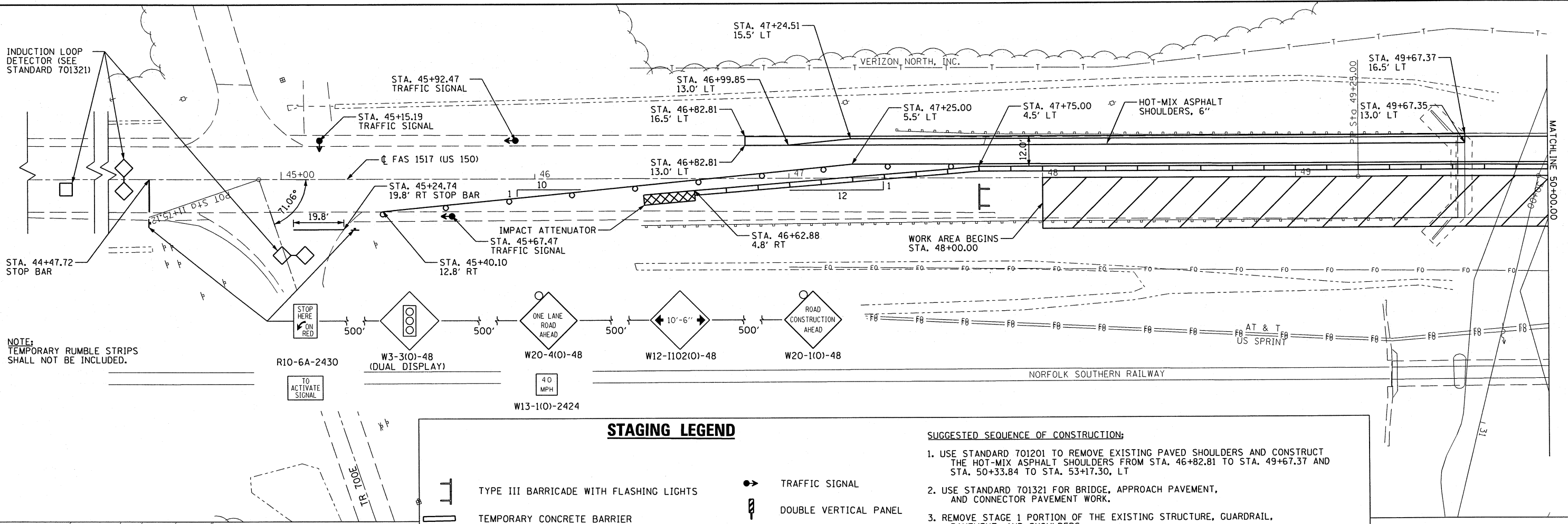


INDUCTION LOOP DETECTOR (SEE STANDARD 701321)

NOTE:  
TEMPORARY RUMBLE STRIPS SHALL NOT BE INCLUDED.

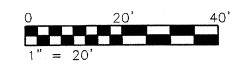
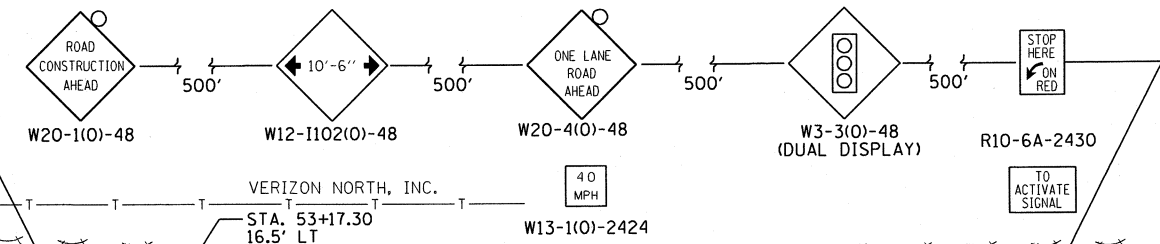
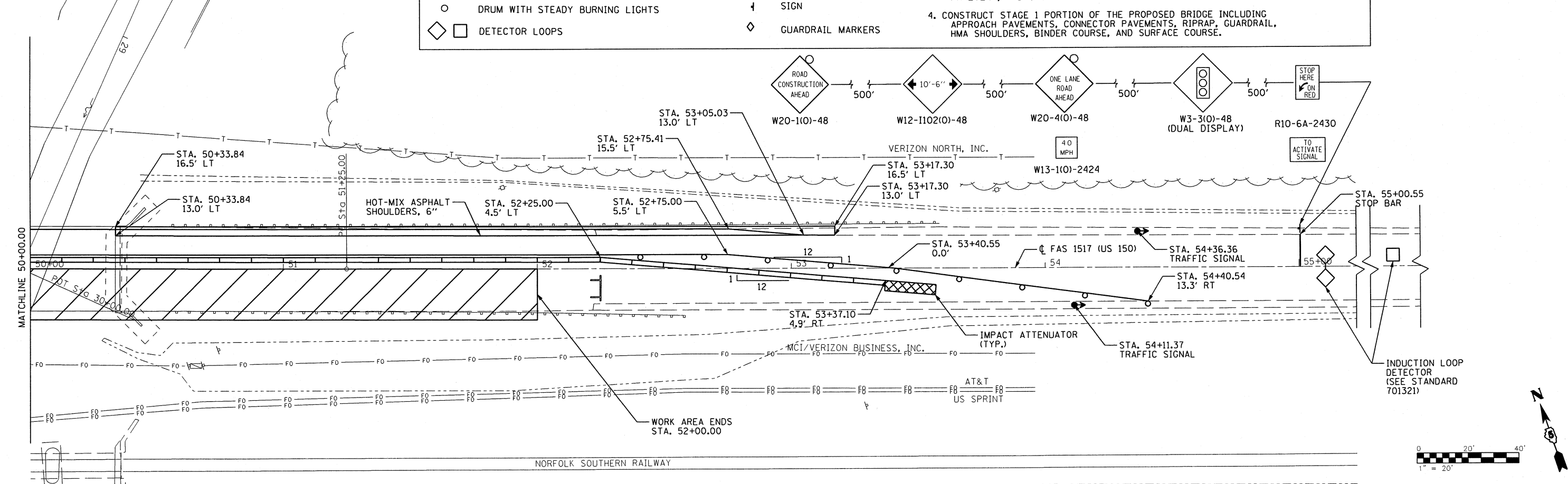


### STAGING LEGEND

- TYPE III BARRICADE WITH FLASHING LIGHTS
- TEMPORARY CONCRETE BARRIER
- DRUM WITH STEADY BURNING LIGHTS
- DETECTOR LOOPS
- TRAFFIC SIGNAL
- DOUBLE VERTICAL PANEL
- SIGN
- GUARDRAIL MARKERS

### SUGGESTED SEQUENCE OF CONSTRUCTION:

1. USE STANDARD 701201 TO REMOVE EXISTING PAVED SHOULDERS AND CONSTRUCT THE HOT-MIX ASPHALT SHOULDERS FROM STA. 46+82.81 TO STA. 49+67.37 AND STA. 50+33.84 TO STA. 53+17.30, LT
2. USE STANDARD 701321 FOR BRIDGE, APPROACH PAVEMENT, AND CONNECTOR PAVEMENT WORK.
3. REMOVE STAGE 1 PORTION OF THE EXISTING STRUCTURE, GUARDRAIL, PAVEMENT, AND SHOULDERS.
4. CONSTRUCT STAGE 1 PORTION OF THE PROPOSED BRIDGE INCLUDING APPROACH PAVEMENTS, CONNECTOR PAVEMENTS, RIPRAP, GUARDRAIL, HMA SHOULDERS, BINDER COURSE, AND SURFACE COURSE.



FILE NAME =	USER NAME = #USER#	DESIGNED - JDS	REVISED -	<b>STATE OF ILLINOIS DEPARTMENT OF TRANSPORTATION</b>	<b>US 150 OVER SALT CREEK STAGING PLAN - STAGE 1 CONSTRUCTION</b>				F.A.S. RTE. 1517	SECTION 11BR-1	COUNTY PIATT	TOTAL SHEETS 48	SHEET NO. 14
#FILEL#		DRAWN - WLL	REVISED -		SCALE: SHEET NO. OF SHEETS STA. TO STA.				CONTRACT NO. 70613				
		CHECKED - RJA	REVISED -		ILLINOIS FED. AID PROJECT								
		DATE -	REVISED -										