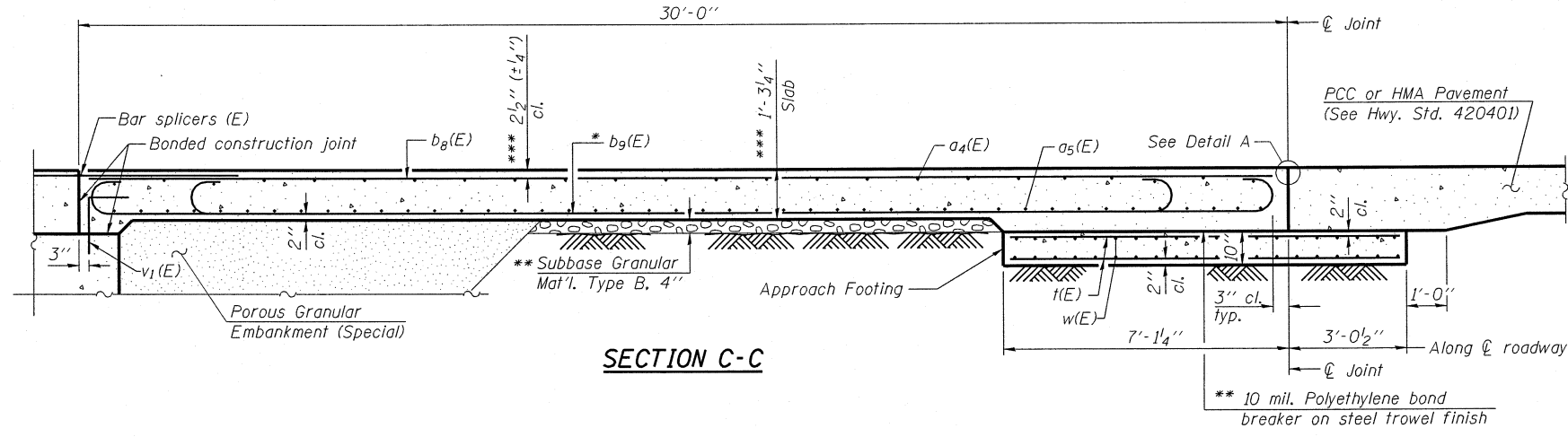
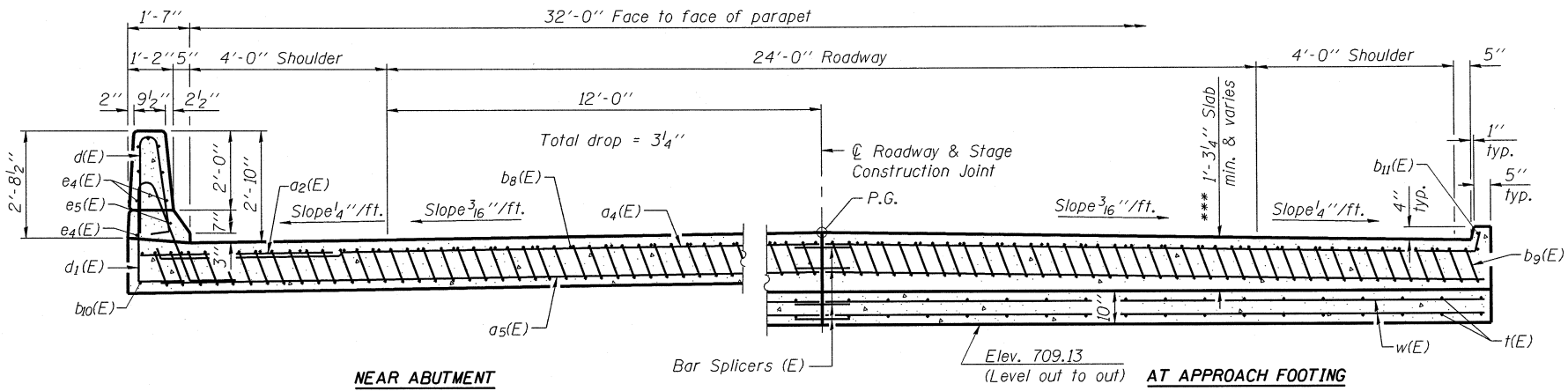


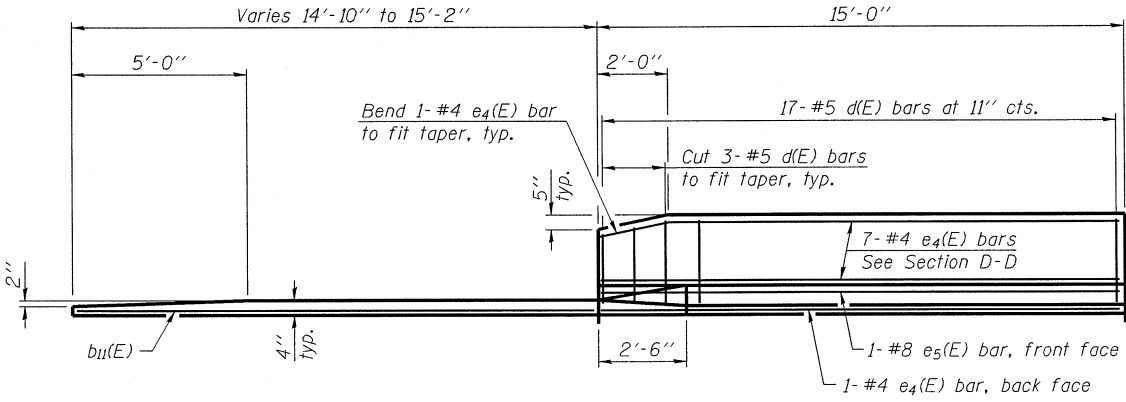
STATE OF ILLINOIS
DEPARTMENT OF TRANSPORTATION



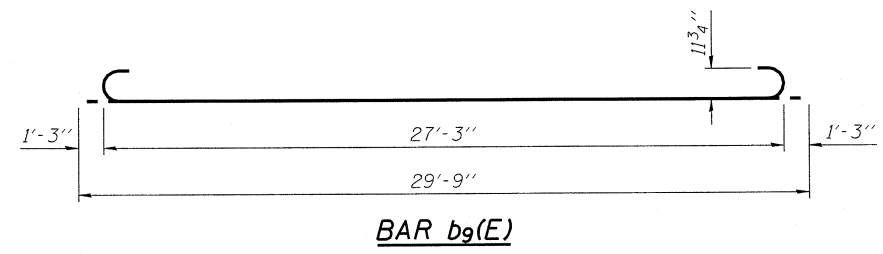
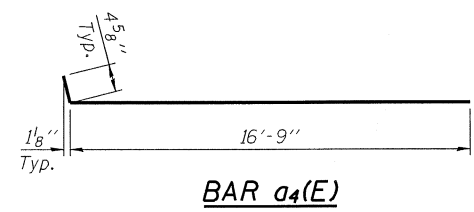
SECTION C-C



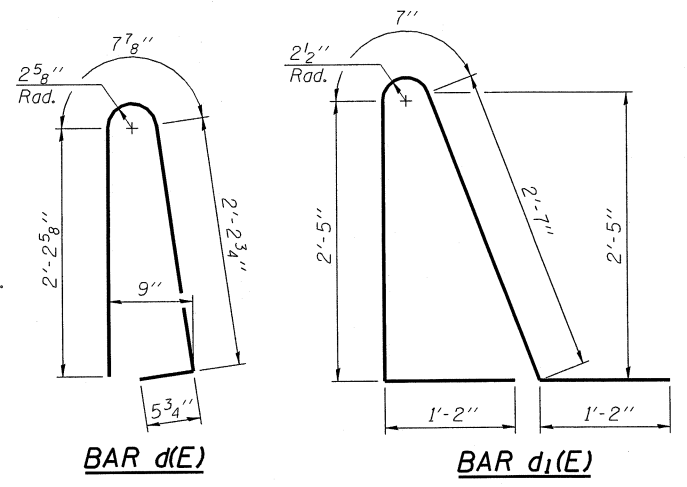
SECTION D-D
(See Plan for dimensions not shown)



VIEW E-E



Notes:
See sheet 8 of 16 for Detail A and View B-B.
Approach slab and parapet concrete shall be paid for as Concrete Superstructure.
Approach footing concrete shall be paid for as Concrete Structures.
Reinforcement shall be paid for as Reinforcement Bars, Epoxy Coated.
For v1(E) bar details, see sheets 10 and 11 of 16.
The approach footing maximum applied service bearing pressure (Qmax) = 2.0 ksf.
For bar splicer details, see sheet 14 of 16.
Cost of excavation for approach footing included with Concrete Structures.
For Porous Granular Embankment (Special) and drainage treatment details, see sheet 2 of 16.
For additional parapet details, see sheet 7 of 16.



* Tilt #9 b9(E) bars as required to maintain clearance.
** Cost included with Concrete Superstructure.
*** Prior to grinding

TWO APPROACHES
BILL OF MATERIAL

Bar	No.	Size	Length	Shape
a2(E)	48	#6	6'-6"	—
a4(E)	100	#4	17'-2"	—
a5(E)	184	#5	16'-10"	—
b8(E)	56	#4	29'-8"	—
b9(E)	164	#9	29'-9"	—
b10(E)	4	#4	14'-8"	—
b11(E)	4	#4	14'-6"	—
d(E)	68	#5	5'-7"	⌒
d1(E)	68	#5	7'-11"	⌒
e4(E)	32	#4	14'-8"	—
e5(E)	4	#8	14'-8"	—
k(E)	136	#4	9'-10"	—
w(E)	160	#5	16'-10"	—
Concrete Superstructure			Cu. Yd.	108.2
Concrete Structures			Cu. Yd.	21.2
Reinforcement Bars, Epoxy Coated			Pound	27750

MAURER & STUTZ, INC.
ENGINEERS SURVEYORS

DESIGNED - BAS
CHECKED - KEF
DRAWN - SGM
CHECKED - BAS

(Sheet 2 of 2)
BRIDGE APPROACH SLAB DETAILS
STRUCTURE NO. 074-0087

SHEET NO. 9 16 SHEETS	F.A.S. RTE.	SECTION	COUNTY	TOTAL SHEETS	SHEET NO.
	1517	11BR-1	PIATT	48	26
FED. ROAD DIST. NO. - ILLINOIS			FED. AID PROJECT		
			CONTRACT NO. 70613		