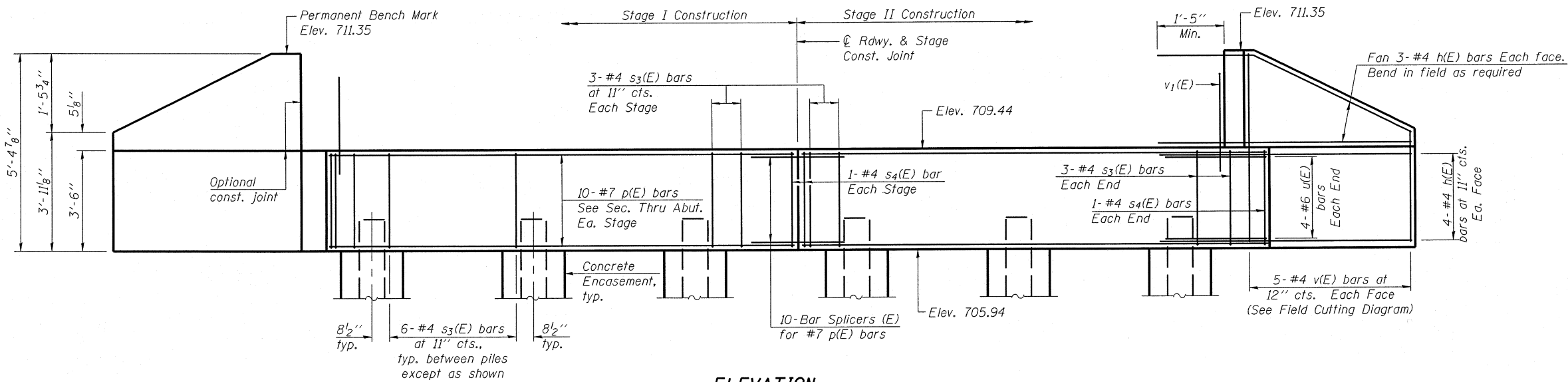
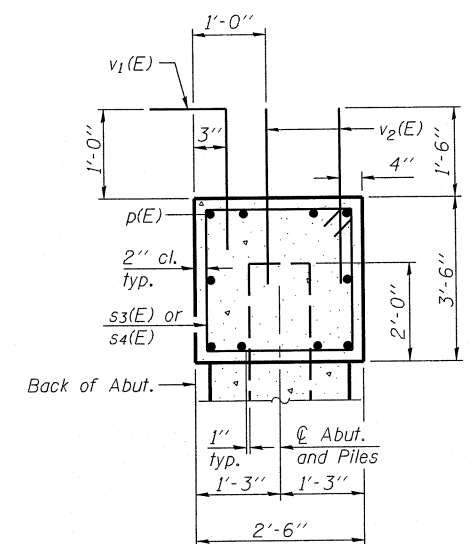


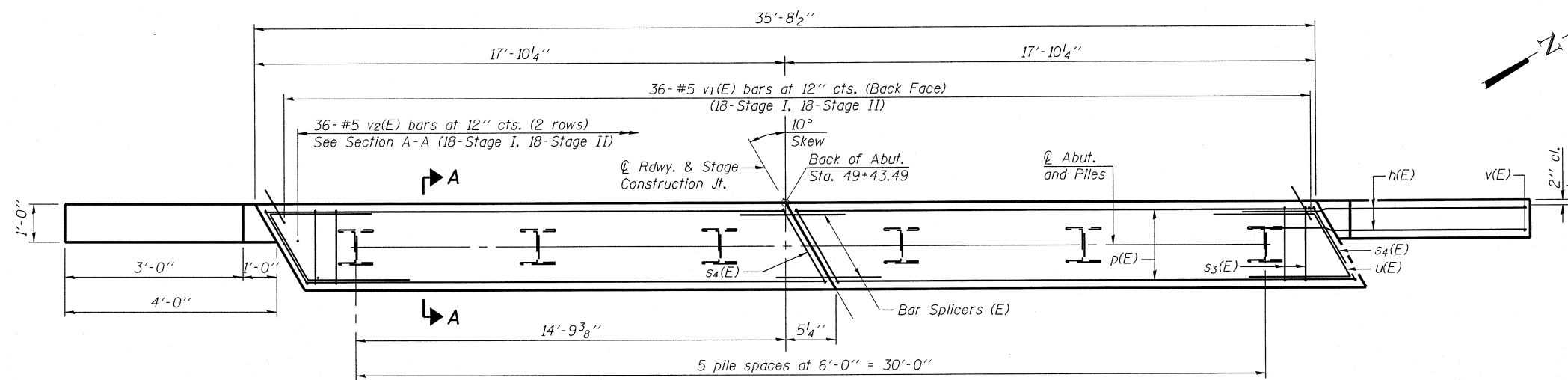
STATE OF ILLINOIS  
DEPARTMENT OF TRANSPORTATION



**ELEVATION**



**SECTION A-A**  
(Dimensions are at Rt. L's)



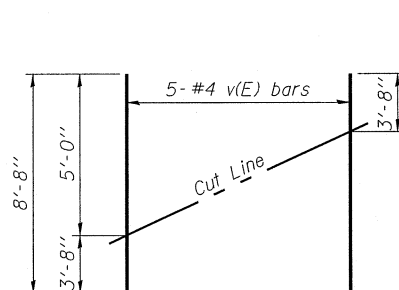
**PLAN**

**PILE DATA**

Type: Steel-HP12x53 with pile shoes  
Nominal Required Bearing: 237 kips  
Factored Resistance Available: 130 kips  
Est. Length: 50 feet  
No. Production Piles: 5  
No. Test Piles: 1

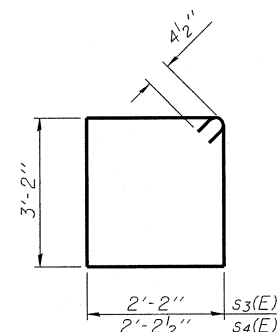


DESIGNED - BAS
CHECKED - KEF
DRAWN - SGM
CHECKED - BAS

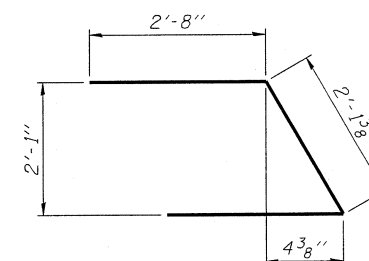


**FIELD CUTTING DIAGRAM**

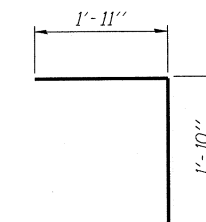
Order v(E) full length. Cut as shown and use remainder of bars in opposite face.



**BARS s3(E) & s4(E)**



**BAR u(E)**



**BAR v1(E)**

**BILL OF MATERIAL**

Bar	No.	Size	Length	Shape
h(E)	28	#4	5'-8"	—
p(E)	20	#7	17'-6"	—
s3(E)	36	#4	11'-5"	□
s4(E)	4	#4	11'-6"	□
u(E)	8	#6	7'-6"	∩
v(E)	10	#4	8'-8"	—
v1(E)	36	#5	3'-9"	└
v2(E)	72	#5	3'-0"	—
Structure Excavation		Cu. Yd.	56	
Concrete Structures		Cu. Yd.	13.0	
Reinforcement Bars, Epoxy Coated		Pound	1640	
Furnishing Steel Piles, HP12x53		Foot	250	
Driving Piles		Foot	250	
Test Pile, Steel HP12x53		Each	1	
Concrete Encasement		Cu. Yd.	2.1	
Pile Shoes		Each	6	

For details of piles and Concrete Encasement, see sheet 13 of 16.  
For details of Bar Splicers, see sheet 14 of 16.

**WEST ABUTMENT  
STRUCTURE NO. 074-0087**

SHEET NO. 10 16 SHEETS	F.A.S. RTE.	SECTION	COUNTY	TOTAL SHEETS	SHEET NO.
	1517	11BR-1	PIATT	48	27
CONTRACT NO. 70613					
FED. ROAD DIST. NO. - ILLINOIS FED. AID PROJECT					