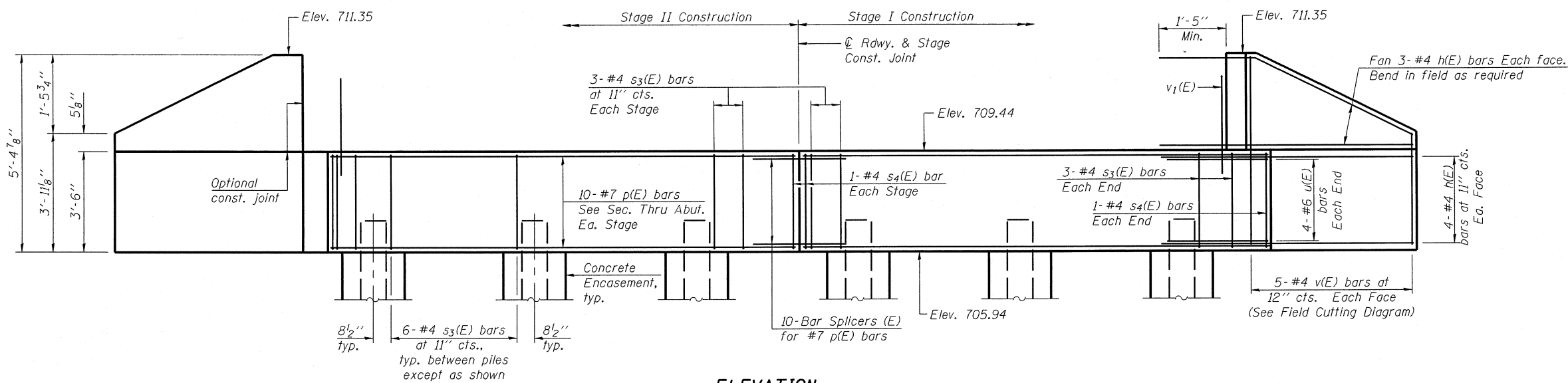
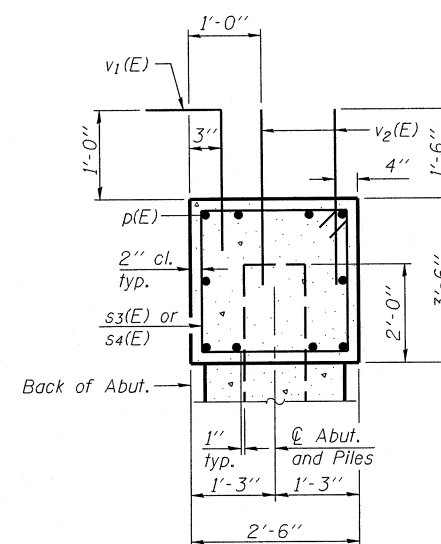


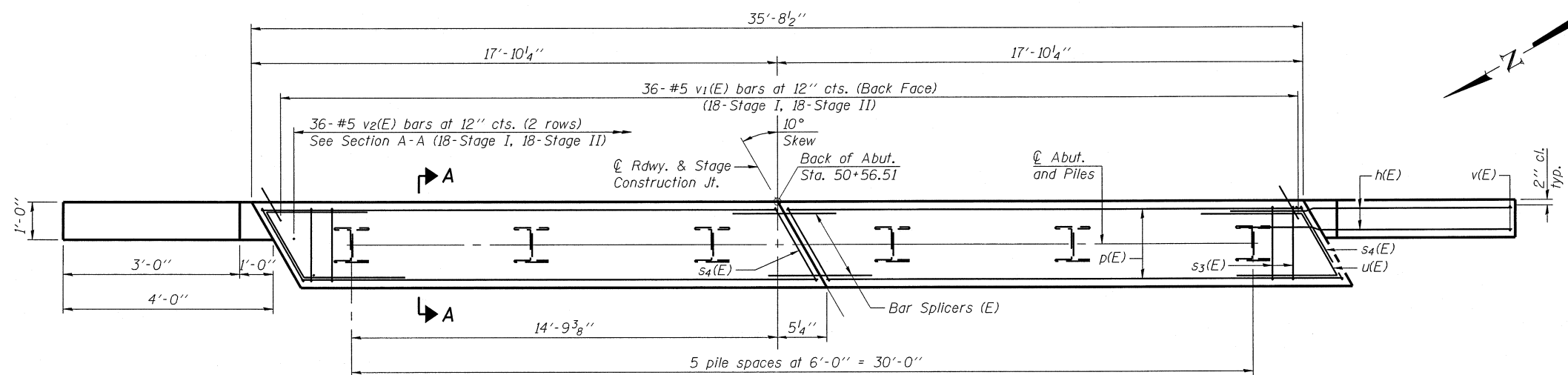
STATE OF ILLINOIS
DEPARTMENT OF TRANSPORTATION



ELEVATION



SECTION A-A
(Dimensions are at Rt. L's)



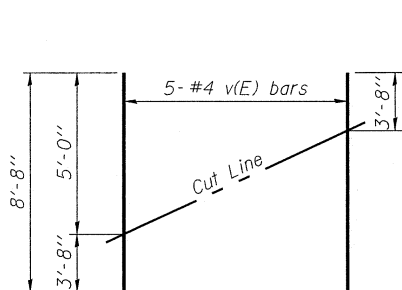
PLAN

PILE DATA

Type: Steel-HP12x53 with pile shoes
Nominal Required Bearing: 237 kips
Factored Resistance Available: 130 kips
Est. Length: 38 feet
No. Production Piles: 5
No. Test Piles: 1

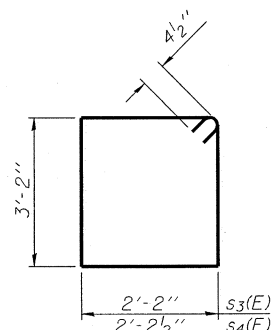


DESIGNED - BAS
CHECKED - KEF
DRAWN - SGM
CHECKED - BAS

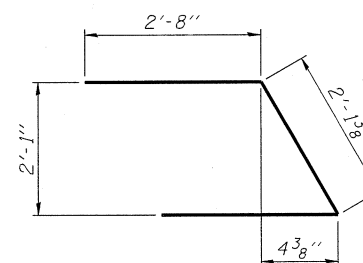


FIELD CUTTING DIAGRAM

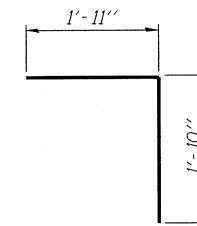
Order v(E) full length. Cut as shown and use remainder of bars in opposite face.



BARS s3(E) & s4(E)



BAR u(E)



BAR v1(E)

BILL OF MATERIAL

Bar	No.	Size	Length	Shape
h(E)	28	#4	5'-8"	—
p(E)	20	#7	17'-6"	—
s3(E)	36	#4	11'-5"	□
s4(E)	4	#4	11'-6"	□
u(E)	8	#6	7'-6"	U
v(E)	10	#4	8'-8"	—
v1(E)	36	#5	3'-9"	└
v2(E)	72	#5	3'-0"	—
Structure Excavation Cu. Yd. 56				
Concrete Structures Cu. Yd. 13.0				
Reinforcement Bars, Epoxy Coated Pound 1640				
Furnishing Steel Piles, HP12x53 Foot 190				
Driving Piles Foot 190				
Test Pile, Steel HP12x53 Each 1				
Concrete Encasement Cu. Yd. 2.1				
Pile Shoes Each 6				

For details of piles and Concrete Encasement, see sheet 13 of 16.
For details of Bar Splicers, see sheet 14 of 16.

**EAST ABUTMENT
STRUCTURE NO. 074-0087**

SHEET NO. 11 16 SHEETS	F.A.S. RTE. 1517	SECTION 11BR-1	COUNTY PIATT	TOTAL SHEETS 48	SHEET NO. 28
	CONTRACT NO. 70613				
FED. ROAD DIST. NO. _ ILLINOIS FED. AID PROJECT					