

STATE OF ILLINOIS
DEPARTMENT OF TRANSPORTATION
DIVISION OF HIGHWAYS

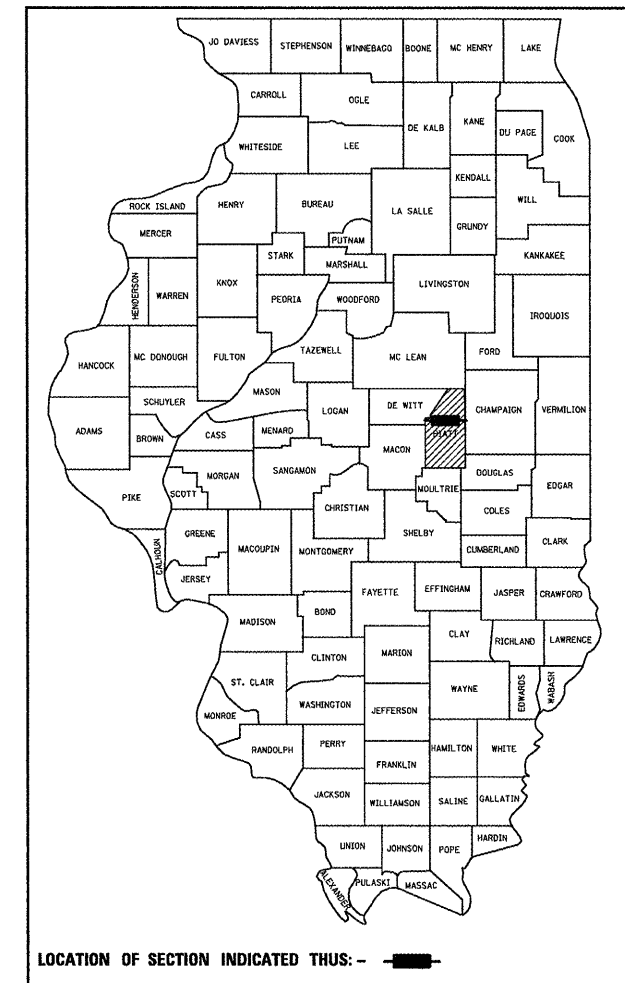
**PROPOSED
HIGHWAY PLANS**

FAS ROUTE 1531 & FAU 7533 (CISCO-MONTICELLO RD.)
SECTION (10,11) I
PAVEMENT PATCHING
PIATT COUNTY
600E TO BRIDGE ST IN MONTICELLO

C-95-054-10

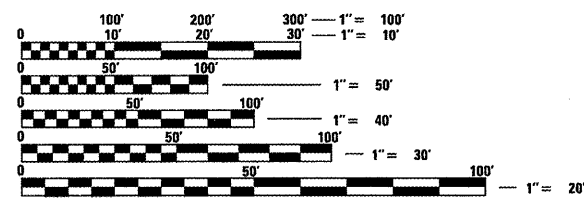
F.A.S. RTE.	SECTION	COUNTY	TOTAL SHEETS	SHEET NO.
1531	(10,11) I	PIATT	12	1
		ILLINOIS	CONTRACT NO. 70877	

D-95-054-10



FOR INDEX OF SHEETS, SEE SHEET NO. 2
FOR SUMMARY OF QUANTITIES, SEE SHEET NO. 3

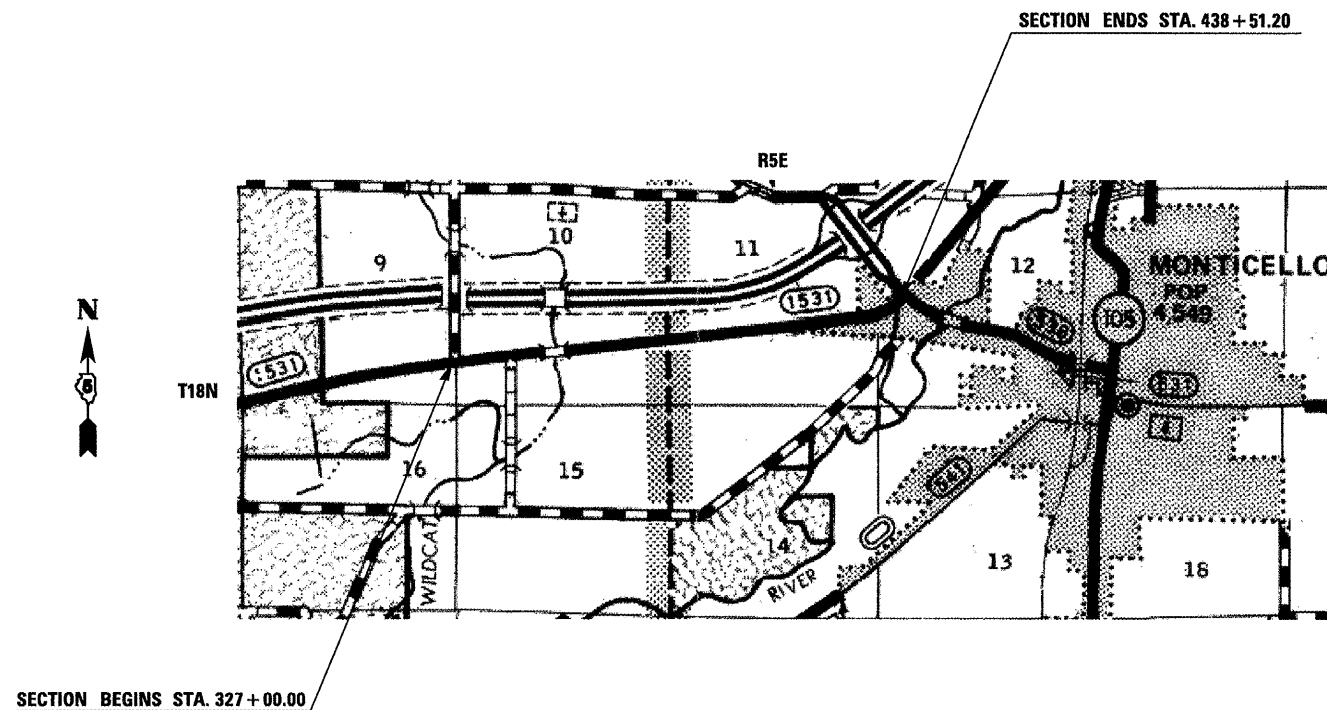
CURRENT ADT
MAJOR COLLECTOR
FAS 1531 (CISCO - MONTICELLO RD) = 2000 (2010)
SU = 4.4% MU = 0.7%



FULL SIZE PLANS HAVE BEEN PREPARED USING STANDARD ENGINEERING SCALES. REDUCED SIZED PLANS WILL NOT CONFORM TO STANDARD SCALES. IN MAKING MEASUREMENTS ON REDUCED PLANS, THE ABOVE SCALES MAY BE USED.

J.U.L.I.E.
JOINT UTILITY LOCATION INFORMATION FOR EXCAVATION
1-800-892-0123 TOWNSHIPS
OR 811 MONTICELLO

PROJECT ENGINEER: NANCY FASIG
SQUAD LEADER: STEVE COOMBES
(217) 465-4181
CONTRACT NO. 70877



GROSS LENGTH = 11,151.2 FT. = 2.112 MILE
NET LENGTH = 11,151.2 FT. = 2.112 MILE

STATE OF ILLINOIS
DEPARTMENT OF TRANSPORTATION
DIVISION OF HIGHWAYS

SUBMITTED 4/18 2011
Jessell A. Cowan
DEPUTY DIRECTOR OF HIGHWAYS, REGION ENGINEER

March 25 2011
Scott E. Stett, P.E.
ACTING ENGINEER OF DESIGN AND ENVIRONMENT

March 25 2011
Christine M. Reed
DIRECTOR OF HIGHWAYS, CHIEF ENGINEER

**PRINTED BY THE AUTHORITY
OF THE STATE OF ILLINOIS**