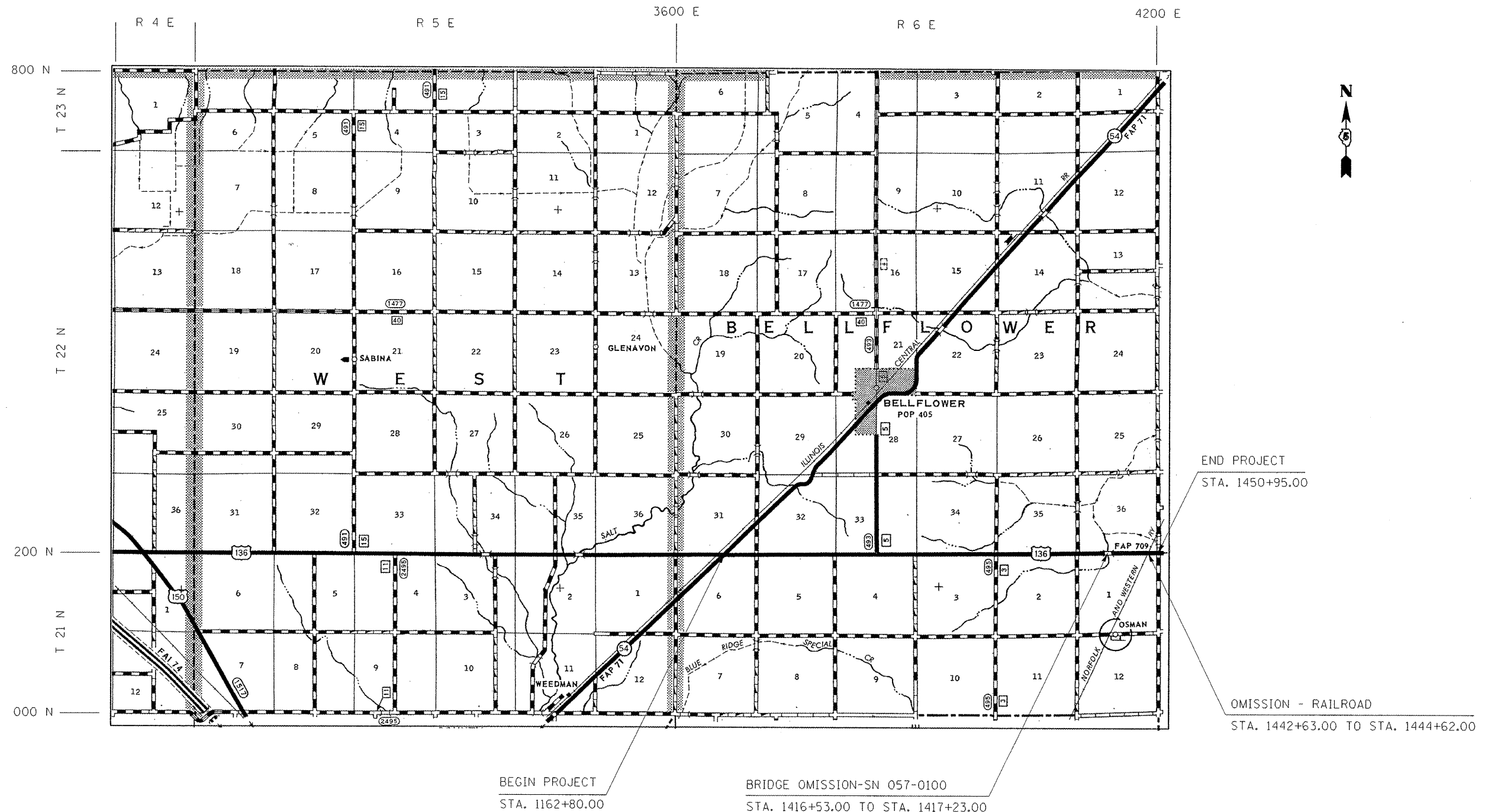


# LOCATION MAP 2 – MCLEAN COUNTY

## FAP 709 ( US 136 ) FROM IL 54 TO CHAMPAIGN COUNTY LINE



**SCALE**  
 1.28125" = 1.0 MI

**GROSS LENGTH OF LOCATION #2 = 28815.00 FT. = 5.457 MILE**  
**NET LENGTH OF LOCATION #2 = 28546.00 FT. = 5.406 MILE**

BEGIN PROJECT  
 STA. 1162+80.00

BRIDGE OMISSION-SN 057-0100  
 STA. 1416+53.00 TO STA. 1417+23.00

END PROJECT  
 STA. 1450+95.00

OMISSION - RAILROAD  
 STA. 1442+63.00 TO STA. 1444+62.00

\* D5 CRACK & JOINT SEAL 2011-1  
 \*\* MCLEAN, DEWITT, & PIATT

FILE NAME *	USER NAME = bucklesj	DESIGNED -	REVISED -	<b>STATE OF ILLINOIS DEPARTMENT OF TRANSPORTATION</b>	<b>LOCATION MAP #2</b>			F.A. RTE.	SECTION	COUNTY	TOTAL SHEETS	SHEET NO.
at:\pw\work\pvidot\bucklesj\d0252724\05	0880-sh1-cover.dgn	DRAWN -	REVISED -		SCALE:	SHEET NO. 1 OF 1 SHEETS	STA. 1162+80.00 TO STA. 1450+95.00	*	**	33	4	
	PLOT SCALE = 40.00000 "/ IN.	CHECKED -	REVISED -					CONTRACT NO. 70880				
	PLOT DATE = 2/3/2011	DATE -	REVISED -		ILLINOIS FED. AID PROJECT							