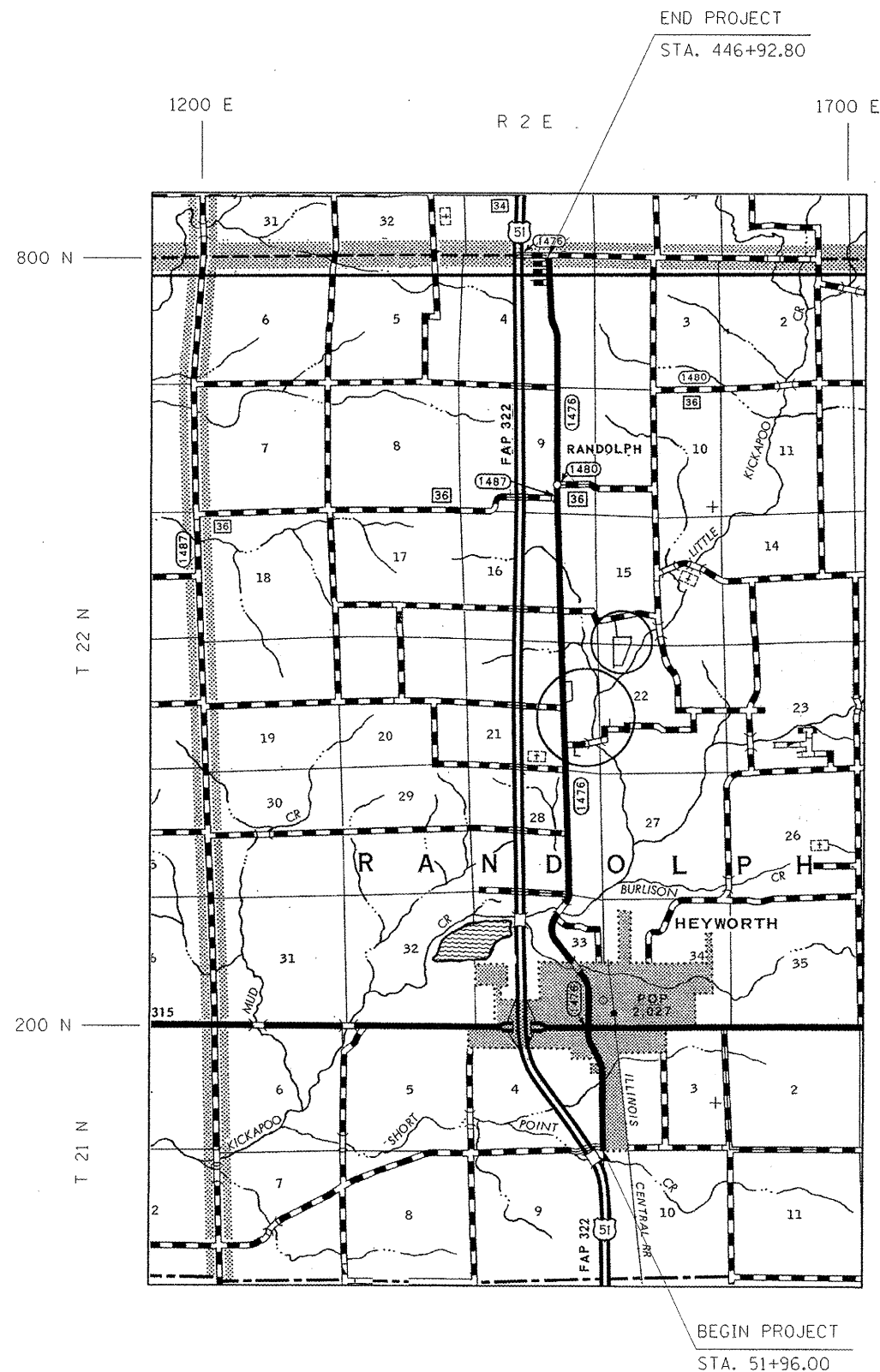


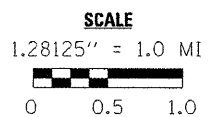
# LOCATION MAP 6 – MCLEAN COUNTY

## FAS 1476 ( OLD US 51 ) FROM SO. OF I-74 TO SO. OF HEYWORTH



**OMISSION FROM SECTION**

CULVERT OMISSION	S.N. 057-8209	STA. 310+22 TO STA. 310+56
CULVERT OMISSION	S.N. 057-8207	STA. 289+63 TO STA. 289+97
CULVERT OMISSION	S.N. 057-8208	STA. 271+65 TO STA. 271+95
BRIDGE OMISSION	S.N. 057-0056	STA. 158+59.74 TO 160+79.46
BRIDGE OMISSION	S.N. 057-0225	STA. 133+20.55 TO 134+11.45
US 136-INTERSECTION OMISSION		STA. 106+00 TO STA. 108+00



**GROSS LENGTH OF LOCATION #6 = 39496.80 FT. = 7.480 MILE**  
**NET LENGTH OF LOCATION #6 = 38888.18 FT. = 7.365 MILE**

\* D5 CRACK & JOINT SEAL 2011-1  
 \*\* MCLEAN, DEWITT, & PIATT

FILE NAME =	USER NAME = bucklesjj	DESIGNED -	REVISED -
cc:\pwork\pwork\proj\dot\bucklesjj\d0252724\09	0880-shr-cover.dgn	DRAWN -	REVISED -
	PLOT SCALE = 40,0000' / IN.	CHECKED -	REVISED -
	PLOT DATE = 2/3/2011	DATE -	REVISED -

**STATE OF ILLINOIS**  
**DEPARTMENT OF TRANSPORTATION**

**LOCATION MAP #6**

SCALE: SHEET NO. 1 OF 1 SHEETS STA. 51+96.00 TO STA. 446+92.80

F.A. RTE.	SECTION	COUNTY	TOTAL SHEETS	SHEET NO.
VAR.	*	**	33	8
CONTRACT NO. 70880				
ILLINOIS FED. AID PROJECT				