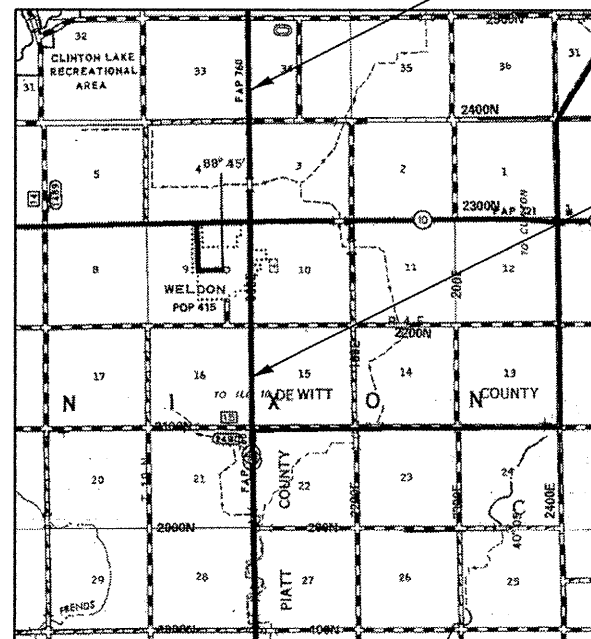


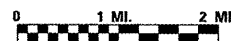
**LOCATION**  
#1 & #2  
FAP 760 (IL 48)  
DEWITT COUNTY



S.N. 020-8033  
LOCATION #1  
STA. 122 + 60

S.N. 020-8034  
LOCATION #2  
STA. 1163 + 24

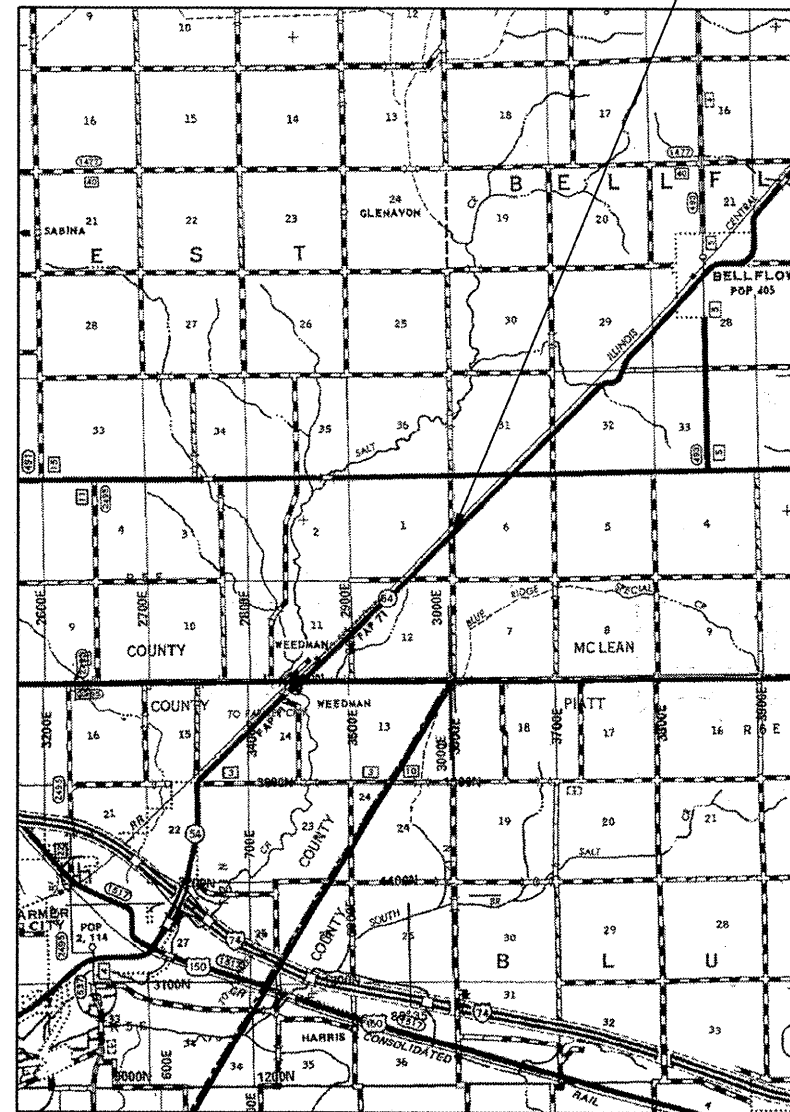
R 4 E, 3RD P.M.



**LOCATION #1**  
PROJECT BEGINS STA. 122 + 55.50  
PROJECT ENDS STA. 122 + 64.50

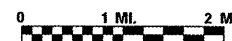
**LOCATION #2**  
PROJECT BEGINS STA. 1163 + 18.50  
PROJECT ENDS STA. 1163 + 29.50

**LOCATION**  
#3  
FAP 71 (IL 54)  
MCLEAN COUNTY



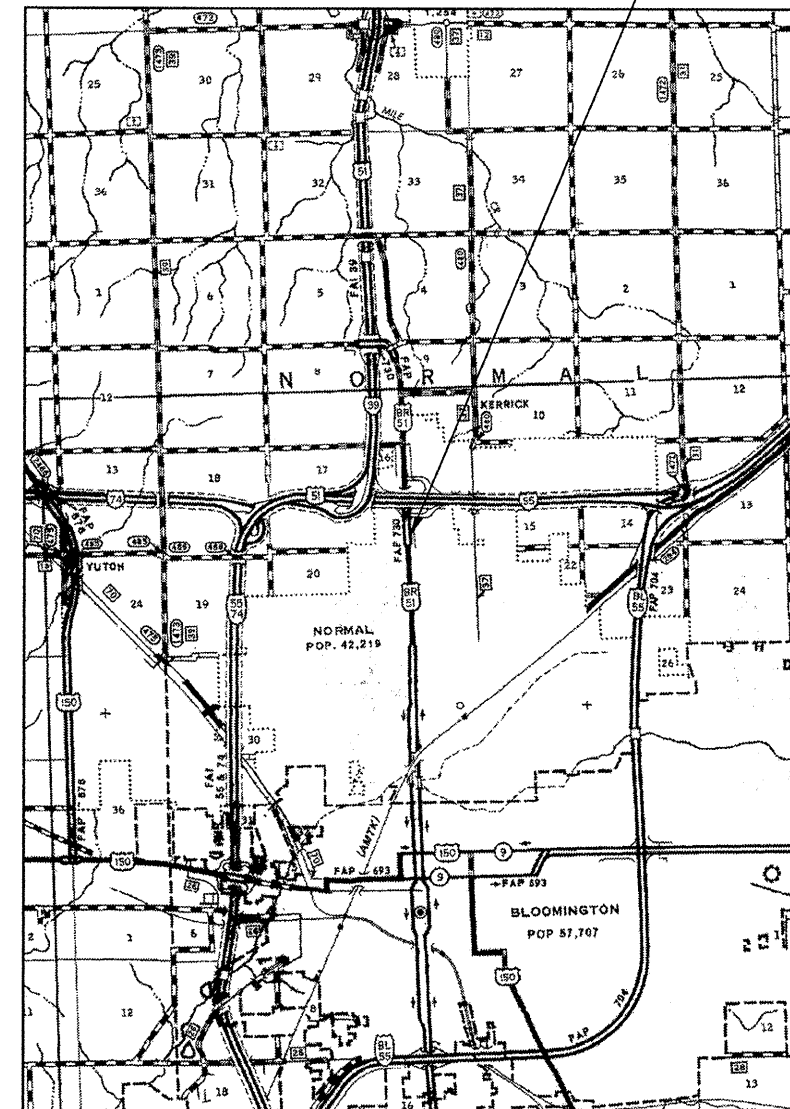
S.N. 057-8003  
LOCATION #3  
STA. 255 + 45

R 5 E | R 6 E, 3RD P.M.



**LOCATION #3**  
PROJECT BEGINS STA. 255 + 39.50  
PROJECT ENDS STA. 255 + 50.50

**LOCATION**  
#4  
FAP 730 (US 51 BUSINESS)  
MCLEAN COUNTY



S.N. 057-8194  
LOCATION #4  
STA. 32 + 60

R 2 E, 3RD P.M.



**LOCATION #4**  
PROJECT BEGINS STA. 32 + 55.50  
PROJECT ENDS STA. 32 + 64.50

- ROUTES VARIOUS
- \*\* POSTING MITIGATION FY2011-1
- \*\*\* DEWITT / MCLEAN

FILE NAME =	USER NAME = keysrb	DESIGNED -	REVISED -
ct:\pwork\pvidot\keysrb\d0248670\0570834.sht.cover.dgn		DRAWN -	REVISED -
		CHECKED -	REVISED -
		DATE -	REVISED -

STATE OF ILLINOIS  
DEPARTMENT OF TRANSPORTATION

LOCATION MAPS

SCALE: SHEET NO. OF SHEETS STA. TO STA.

F.A. RTE.	SECTION	COUNTY	TOTAL SHEETS	SHEET NO.
•	**	***	23	2
CONTRACT NO. 70894				
[ILLINOIS] FED. AID PROJECT				