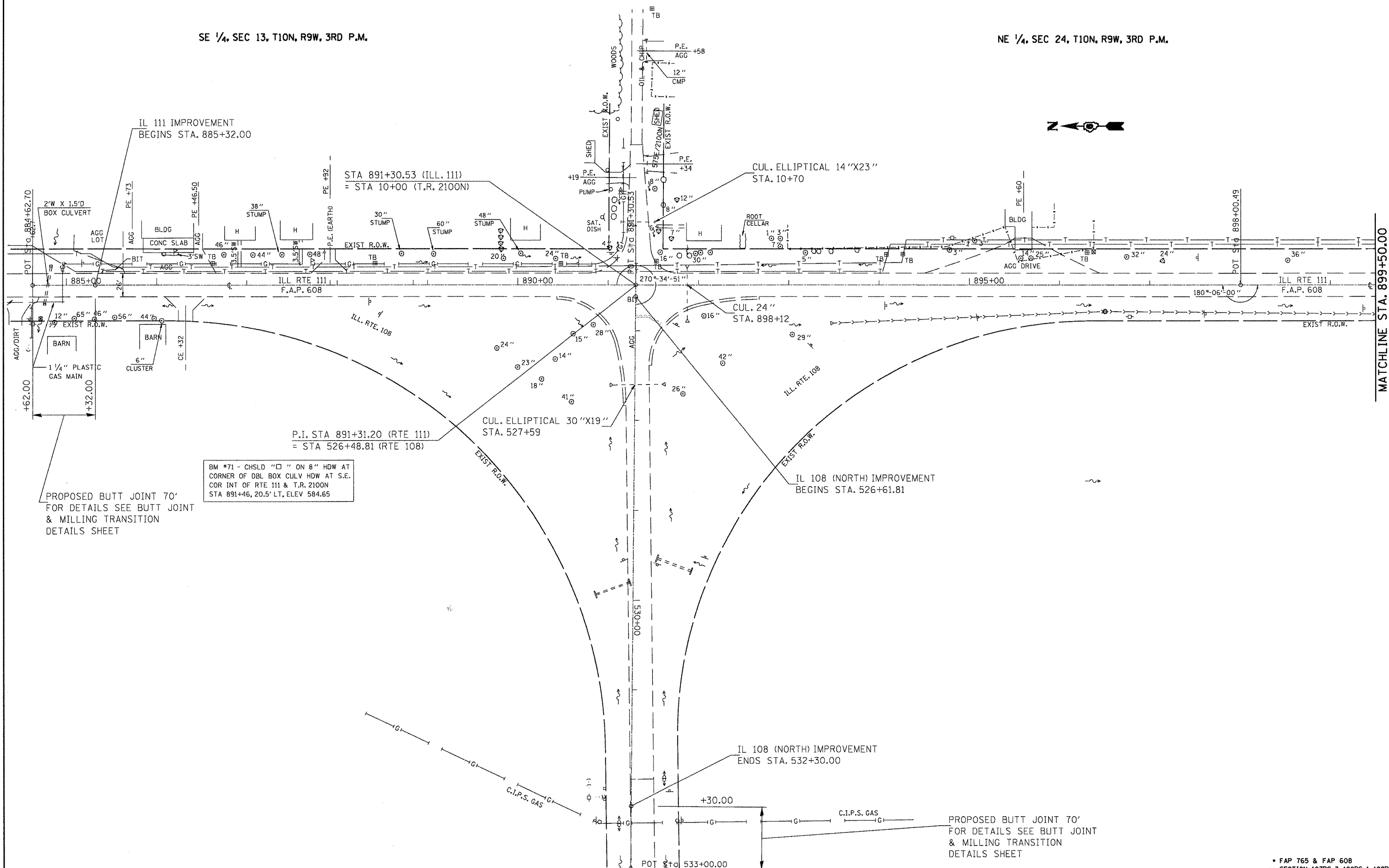


SE 1/4, SEC 13, T10N, R9W, 3RD P.M.

NE 1/4, SEC 24, T10N, R9W, 3RD P.M.



PROPOSED BUTT JOINT 70'
FOR DETAILS SEE BUTT JOINT
& MILLING TRANSITION
DETAILS SHEET

BM #71 - CHSLD "□" ON 8" HDW AT
CORNER OF DBL BOX CULV HDW AT S.E.
COR INT OF RTE 111 & T.R. 2100N
STA 891+46, 20.5' LT, ELEV 584.65

PROPOSED BUTT JOINT 70'
FOR DETAILS SEE BUTT JOINT
& MILLING TRANSITION
DETAILS SHEET

• FAP 765 & FAP 608
•• SECTION 107RS-3, 108RS-1, 109RS-3

FILE NAME =	USER NAME = laughtinr1	DESIGNED -	REVISED -
ct:\pwwork\pwwork\laughtinr1\108215448\06	C36-shr-plot-IL111&IL108nor.thdgn	DRAWN -	REVISED -
	PLOT SCALE = 100.0000' / 1"	CHECKED -	REVISED -
	PLOT DATE = Dec-17-2010 01:59:23PM	DATE -	REVISED -

**STATE OF ILLINOIS
DEPARTMENT OF TRANSPORTATION**

IL 111 PLAN			
SCALE:	SHEET NO. OF	SHEETS	STA. 884+62.00 TO STA. 899+50.00

F.A.P. RTE.	SECTION	COUNTY	TOTAL SHEETS	SHEET NO.
•	••	MACOUPIN	46	42
CONTRACT NO. 72C36				
ILLINOIS FED. AID PROJECT				

MATCHLINE STA. 899+50.00