

F.A.P. RTE.	SECTION	COUNTY	TOTAL SHEETS	SHEET NO.
315	123 RS-7	MASON	9	1
FED. ROAD DIST. NO.		ILLINOIS	CONTRACT NO. 72D85	

STATE OF ILLINOIS  
DEPARTMENT OF TRANSPORTATION  
DIVISION OF HIGHWAYS

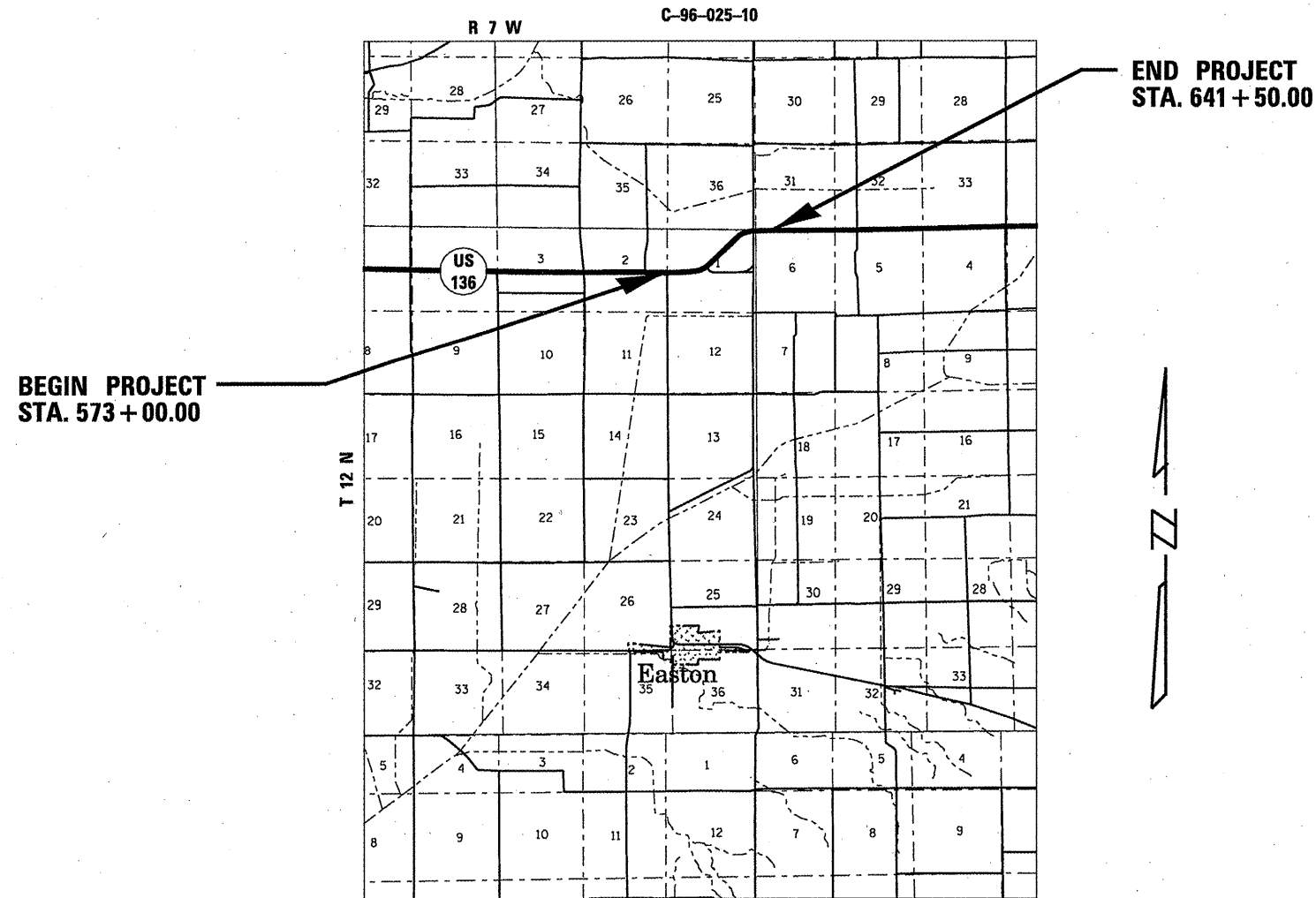
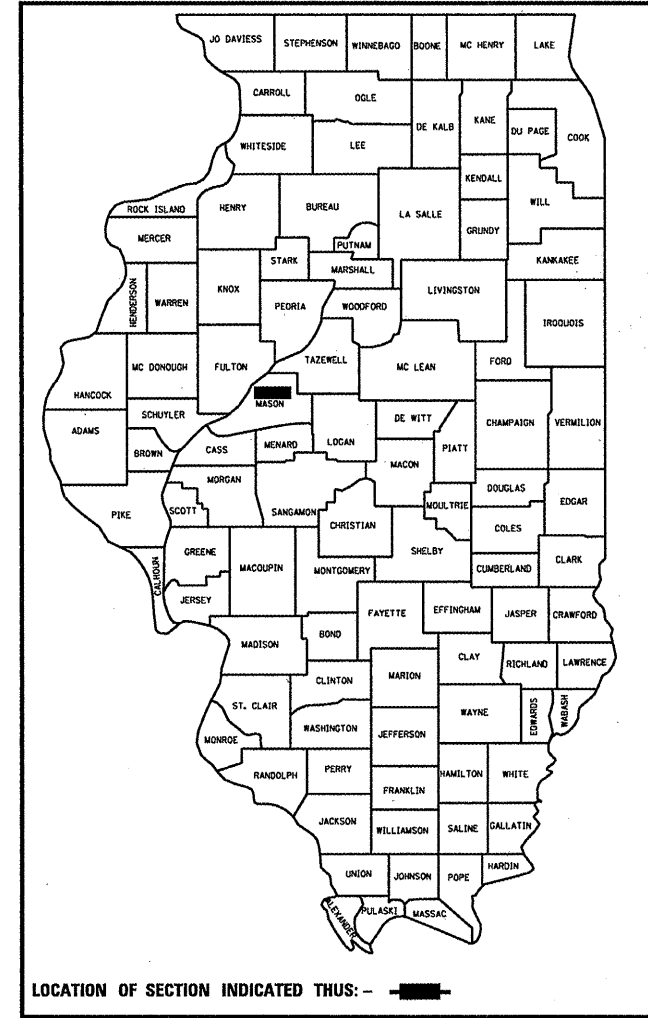
**PROPOSED  
CONTRACT MAINTENANCE**

FAP 315 (US 136)  
SECTION 123 RS-7

MASON COUNTY

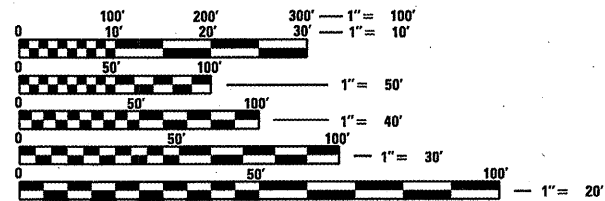
FOR INDEX OF SHEETS, SEE SHEET NO. 2

D-96-025-10



GROSS LENGTH = 6,850.00 FT. = 1.297 MILES

A.D.T. = 3,450 (375)



FULL SIZE PLANS HAVE BEEN PREPARED USING STANDARD ENGINEERING SCALES. REDUCED SIZED PLANS WILL NOT CONFORM TO STANDARD SCALES. IN MAKING MEASUREMENTS ON REDUCED PLANS, THE ABOVE SCALES MAY BE USED.

J.U.L.I.E.  
JOINT UTILITY LOCATION INFORMATION FOR EXCAVATION  
1-800-892-0123  
OR 811

PLAN AND CONTRACT TECHNICIAN  
TIMOTHY SHARP (217)782-7743

CONTRACT NO. 72D85

STATE OF ILLINOIS  
DEPARTMENT OF TRANSPORTATION  
DIVISION OF HIGHWAYS

SUBMITTED January 5 20 11

Roger Z. D... [Signature]  
DEPUTY DIRECTOR OF HIGHWAYS, REGION ENGINEER

Feb 4 20 11  
Scott E. Stitt P.E. [Signature]  
ENGINEER OF DESIGN AND ENVIRONMENT

Feb 4 20 11  
Christine M. Reed [Signature]  
DIRECTOR OF HIGHWAYS, CHIEF ENGINEER

**PRINTED BY THE AUTHORITY  
OF THE STATE OF ILLINOIS**

INDEX

- 1 COVER
- 2 INDEX/STANDARDS/SIGNATURES
- 3-4 QUANTITIES
- 5 LOCATION MAP
- 6-7 TYPICAL SECTIONS
- 8 SCHEDULES
- 9 BUTT JOINT DETAILS

STANDARDS

- 701001-02
- 701006-03
- 701201-04
- 701301-04
- 701306-03
- 701311-03
- 701901-01
- 780001-02
- 781001-03

<b>STATE OF ILLINOIS DEPARTMENT OF TRANSPORTATION DIVISION OF HIGHWAYS DISTRICT 6</b>	
EXAMINED <u>Jan 4</u> 20 <u>11</u>	<u>One Walker</u> ENGINEER OF OPERATIONS
EXAMINED <u>DEC 22</u> 20 <u>10</u>	<u>Jimmy Felt</u> ENGINEER OF PROJECT IMPLEMENTATION
EXAMINED <u>December 22</u> 20 <u>10</u>	<u>ARMU</u> ENGINEER OF PROGRAM DEVELOPMENT

INDEX/STANDARDS/SIGNATURES  
FAP 315 (US 136)  
SECTION 123 RS-7  
MASON COUNTY

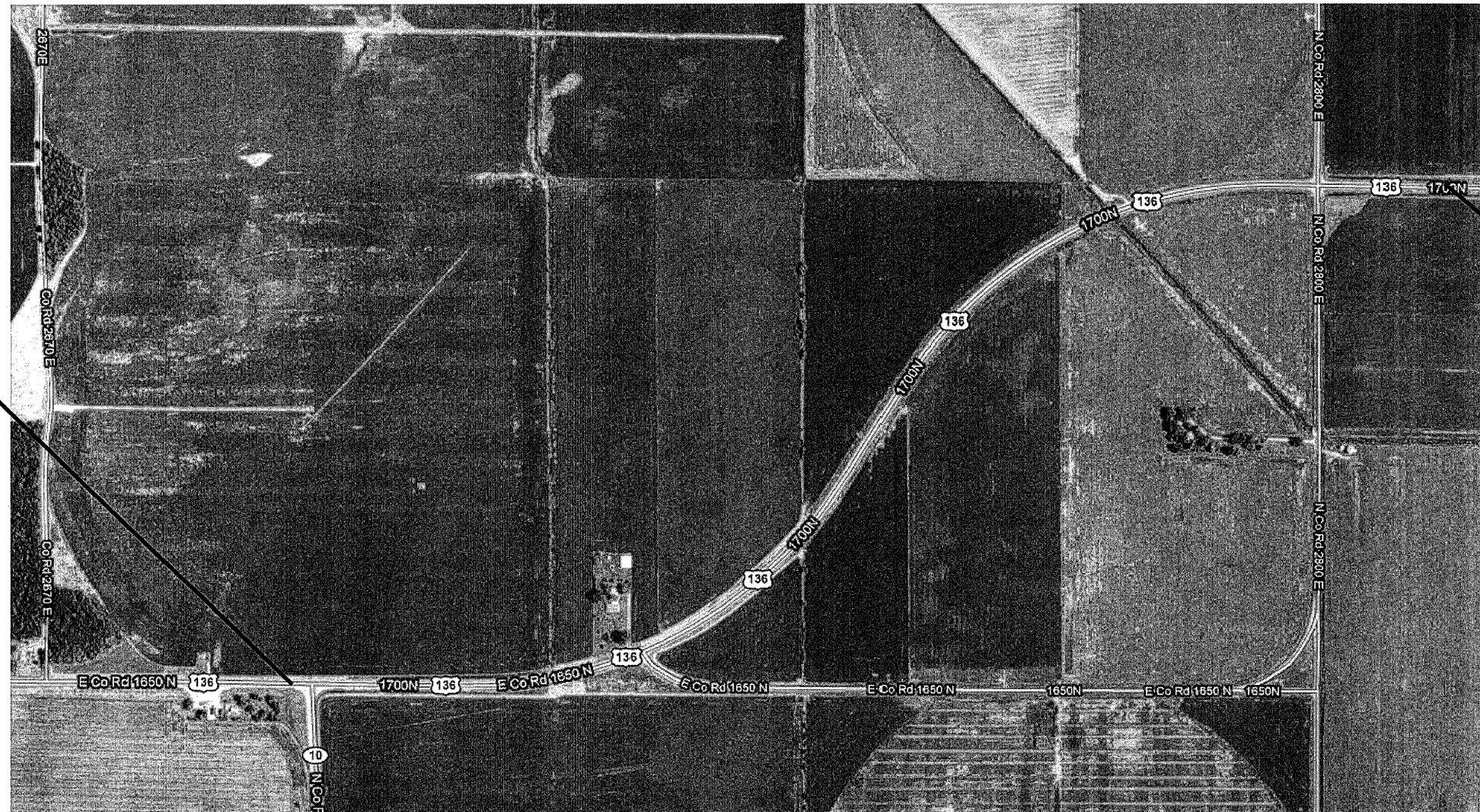
S U M M A R Y O F Q U A N T I T I E S

CODE NO.	ITEM	UNIT	100% STATE
			0005
			TOTAL QTY
40600200	BITUMINOUS MATERIALS (PRIME COAT)	TON	7.0
40600300	AGGREGATE (PRIME COAT)	TON	36.6
40600895	CONSTRUCTING TEST STRIP	EACH	1
40600990	TEMPORARY RAMP	SQ YD	27
40603315	HOT-MIX ASPHALT SURFACE COURSE, MIX "C", N70	TON	1,535
44000155	HOT-MIX ASPHALT SURFACE REMOVAL, 1 1/2"	SQ YD	18,267
48101200	AGGREGATE SHOULDERS, TYPE B	TON	522
67100100	MOBILIZATION	L SUM	1
70100450	TRAFFIC CONTROL AND PROTECTION, STANDARD 701201	L SUM	1
70100460	TRAFFIC CONTROL AND PROTECTION, STANDARD 701306	L SUM	1

QUANTITIES  
FAP 315 (US 136)  
SECTION 123 RS-7  
MASON COUNTY

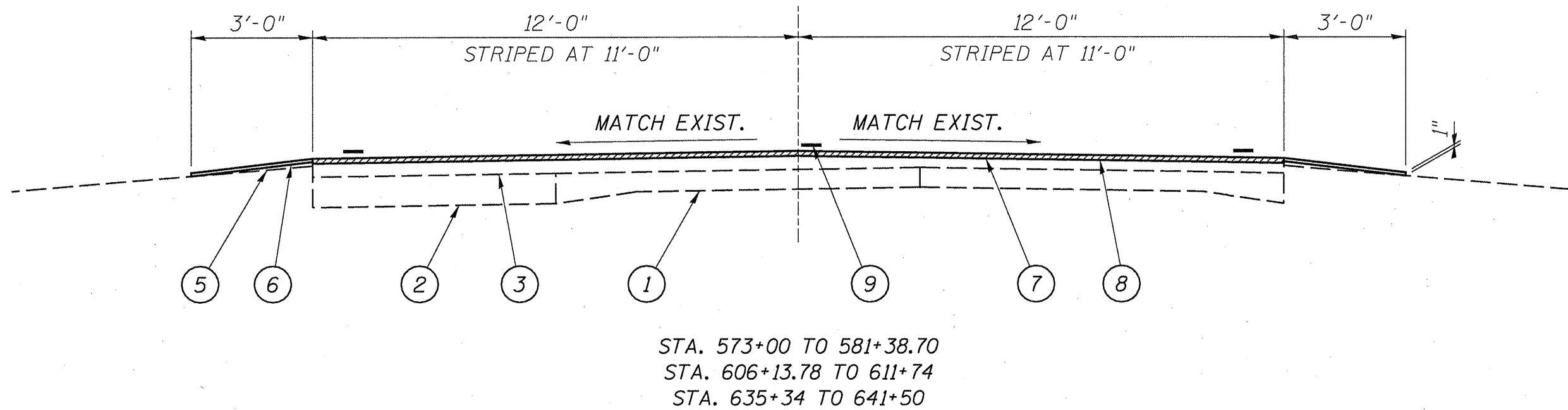


BEGIN PROJECT  
STA. 573+00



END PROJECT  
STA. 641+50

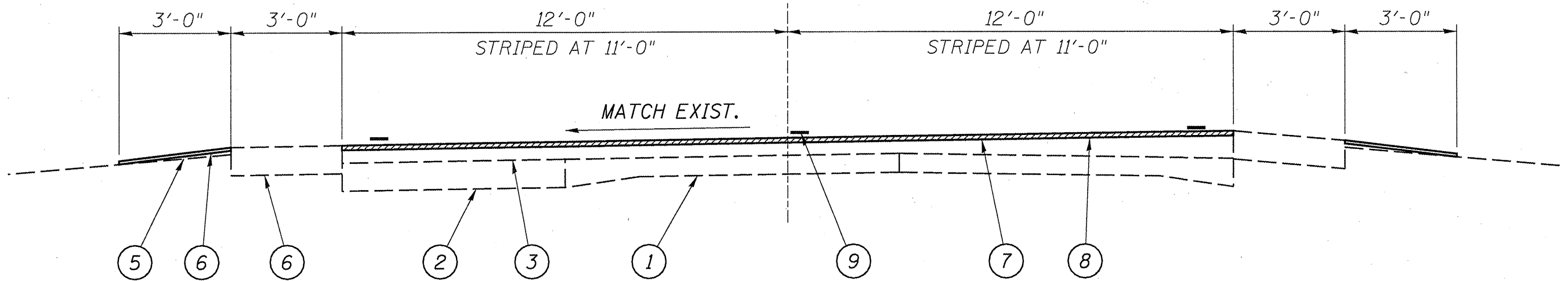
LOCATION MAP  
FAP 315 (US 136)  
SECTION 123 RS-7  
MASON COUNTY



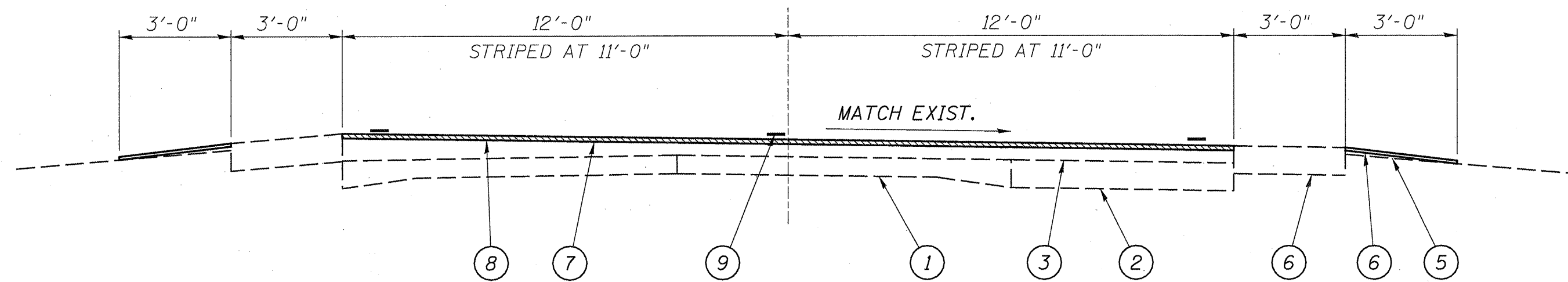
LEGEND

- 1 - EXIST. P.C.C. PAVEMENT 9-6-9
- 2 - EXIST. P.C.C. BASE COURSE WIDENING 9"
- 3 - EXIST. HOT-MIX ASPHALT SURFACE
- 4 - EXIST. HOT-MIX ASPHALT SHOULDER
- 5 - EXIST. AGGREGATE SHOULDERS
- 6 - PROP. AGGREGATE SHOULDERS, TYPE B
- 7 - PROP. HOT-MIX ASPHALT SURFACE REMOVAL 1 1/2"
- 8 - PROP. HOT-MIX ASPHALT SURFACE COURSE, MIX C, N70 1 1/2"
- 9 - PROP. PAINT PAVEMENT MARKING - LINE 5"

TYPICALS  
FAP 315 (US 136)  
SECTION 123 RS-7  
MASON COUNTY



STA. 581+38.70 TO 606+13.78



STA. 611+74 TO 635+34

LEGEND

- 1 - EXIST. P.C.C. PAVEMENT 9-6-9
- 2 - EXIST. P.C.C. BASE COURSE WIDENING 9"
- 3 - EXIST. HOT-MIX ASPHALT SURFACE
- 4 - EXIST. HOT-MIX ASPHALT SHOULDER
- 5 - EXIST. AGGREGATE SHOULDERS
- 6 - PROP. AGGREGATE SHOULDERS, TYPE B
- 7 - PROP. HOT-MIX ASPHALT SURFACE REMOVAL 1 1/2"
- 8 - PROP. HOT-MIX ASPHALT SURFACE COURSE, MIX C, N70 1 1/2"
- 9 - PROP. PAINT PAVEMENT MARKING - LINE 5"

TYPICALS  
FAP 315 (US 136)  
SECTION 123 RS-7  
MASON COUNTY

PAVEMENT MARKING SCHEDULE			
STATION	TYPE	PAINT PVT MK LINE 5"	
		WHITE	YELLOW
LT & RT 573+00 TO 641+50	EDGE LINE	13,700 FT	
STA. 573+00 TO 641+50	SKIP DASH		1,720 FT
<hr/>			
<hr/>			
TOTALS		13,700 FT	1,720 FT

MIXTURE REQUIREMENTS	
THE FOLLOWING MIXTURE REQUIREMENTS ARE APPLICABLE FOR THIS PROJECT	
MIXTURE USE(S):	H.M.A S.C., MIX C, N70
AC/PG	PG 64-22
DESIGN AIR VOIDS:	4.0% @ N DESIGN = 70
MIXTURE COMP:	IL 9.5 OR 12.5
FRICITION AGG:	MIX "C"

NOTES:  
STATIONS ARE APPROXIMATE.

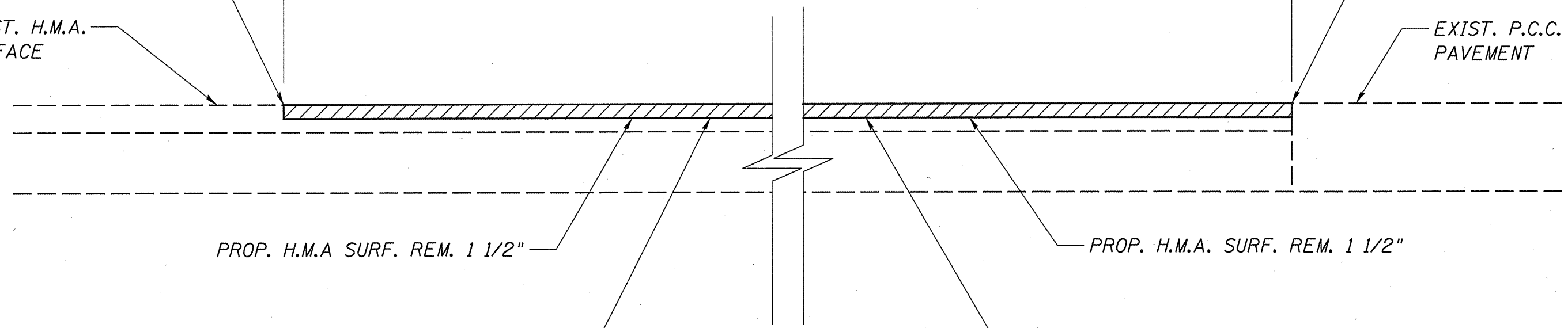
SCHEDULES  
FAP 315 (US 136)  
SECTION 123 RS-7  
MASON COUNTY



SAW CUT MIN. 1 1/2"  
INCLUDED IN H.M.A.  
SURF. REM. 1 1/2"

573+00

EXIST. H.M.A.  
SURFACE



641+50

SAW CUT MIN. 1 1/2"  
INCLUDED IN H.M.A.  
SURF. REM. 1 1/2"

EXIST. P.C.C.  
PAVEMENT

PROP. H.M.A SURF. REM. 1 1/2"

PROP. H.M.A. SURF. REM. 1 1/2"

PROP. H.M.A. SURF. CRSE.,  
MIX C, N70 1 1/2"

PROP. H.M.A. SURF. CRSE.,  
MIX C, N70 1 1/2"

BUTT JOINT  
FAP 315 (US 136)  
SECTION 123 RS-7  
MASON COUNTY