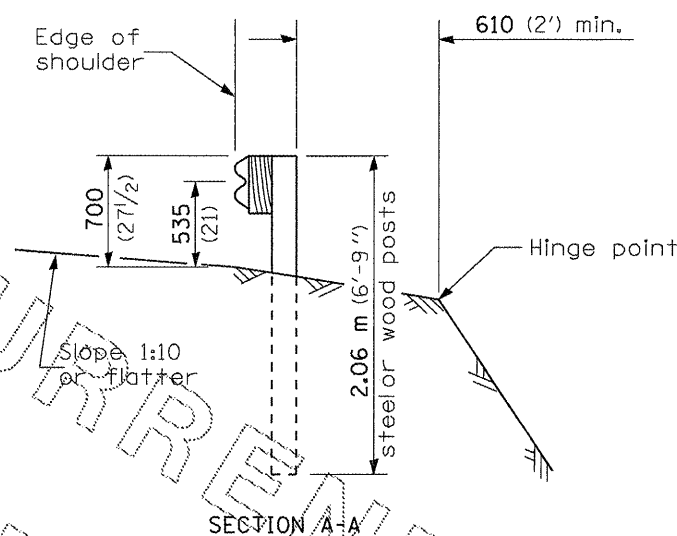
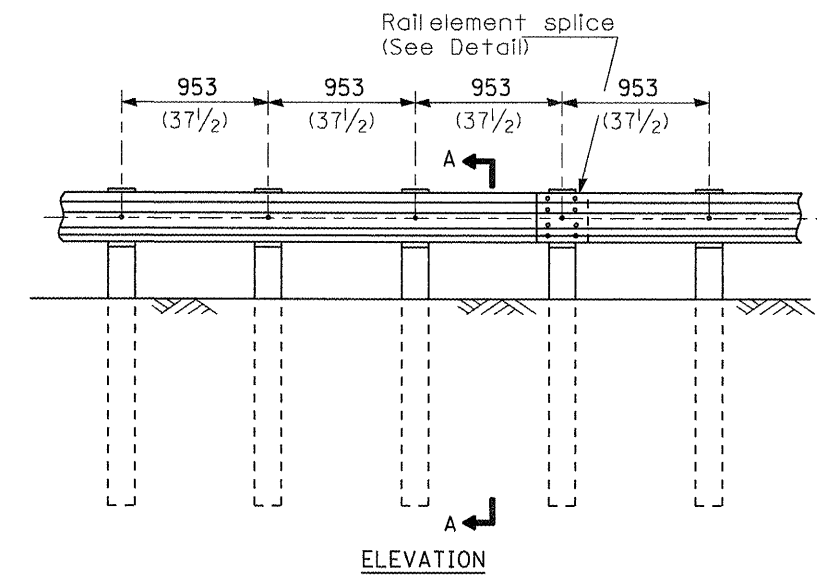


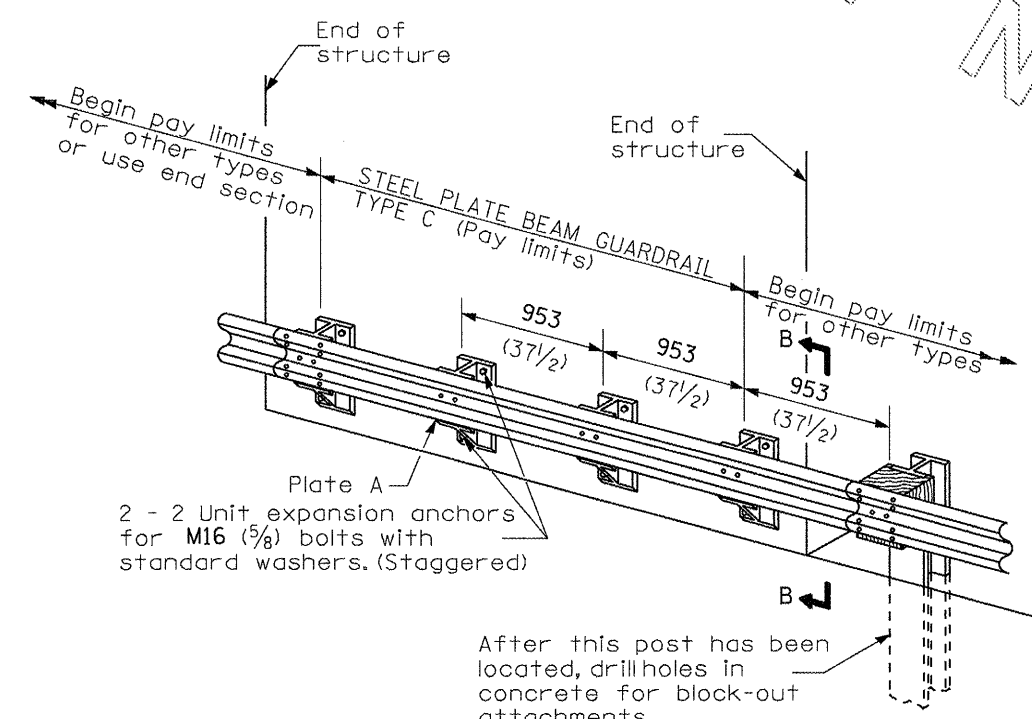
TYPE A
1.905 m (6'-3") Typical post spacing



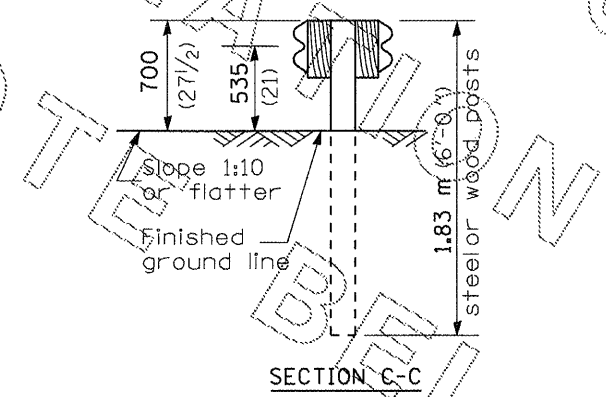
SECTION A-A



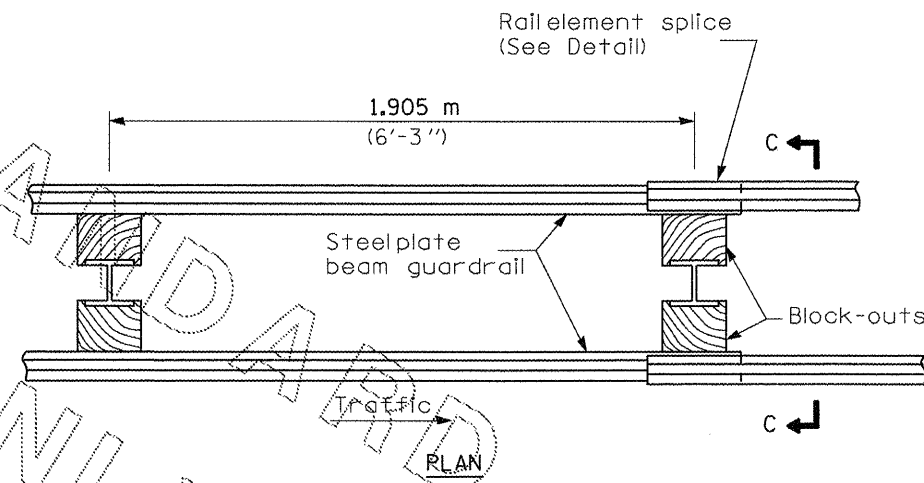
TYPE B
953 (37 1/2) Closed post spacing



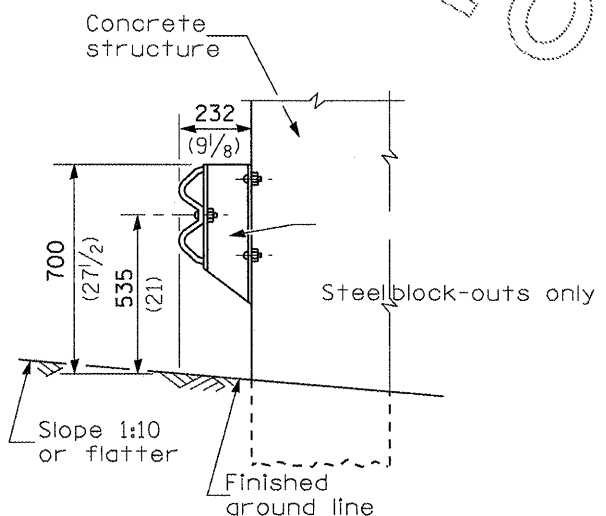
TYPE C
953 (37 1/2) Block-out spacing



SECTION C-C



TYPE D
Double steel plate beam guardrail
1.905 m (6'-3") typical post spacing



SECTION B-B

NOTE:
THIS DETAIL SHALL BE USED FOR GUARDRAIL REPAIRS WHERE NEW STEEL PLATE BEAM GUARDRAIL AND TERMINAL SECTIONS WILL BE TIED INTO EXISTING STEEL PLATE BEAM GUARDRAIL AS WELL AS FOR REMOVING AND RE-ERECTING THE RAIL ELEMENT.

GENERAL NOTES

All slope ratios are expressed as units of vertical displacement to units of horizontal displacement (V:H).
All dimensions are in millimeters (inches) unless otherwise shown.
The existing steelposts may be drilled to match the bolt pattern shown herein for the wood block-out, or a new steelpost shall be provided.
This detail is applicable to the guardrail system used prior to January 1, 2007. For details on the Midwest Guardrail System, see Standard 630001.

FILE NAME =	USER NAME = laughlinr1	DESIGNED -	REVISED -
c:\pwork\pwork\laughlinr1\d0240387\DE	ZE07-shs-guardrail-modification.dgn	DRAWN -	REVISED -
	PLOT SCALE = 100.0000' / 1m.	CHECKED -	REVISED -
	PLOT DATE = Dec-16-2010 09:47:23AM	DATE -	REVISED -

**STATE OF ILLINOIS
DEPARTMENT OF TRANSPORTATION**

D6 GUARDRAIL END REPL GUARDRAIL MODIFICATION SHEETS			
SCALE:	SHEET NO. OF SHEETS	STA. TO STA.	

F.A.P. RTE. VAR.	SECTION	COUNTY	TOTAL SHEETS	SHEET NO.
	..	.	27	17
			CONTRACT NO. 72E07	