

STATE OF ILLINOIS
DEPARTMENT OF TRANSPORTATION
DIVISION OF HIGHWAYS

**PROPOSED
HIGHWAY PLANS**

FAP ROUTE 75 (IL 29)
SECTION 1N

MEDIAN REMOVAL
CHRISTIAN COUNTY

C-96-050-11

F.A.P. RTE.	SECTION	COUNTY	TOTAL SHEETS	SHEET NO.
75	1N	CHRISTIAN	4	1
		ILLINOIS	CONTRACT NO. 72E22	

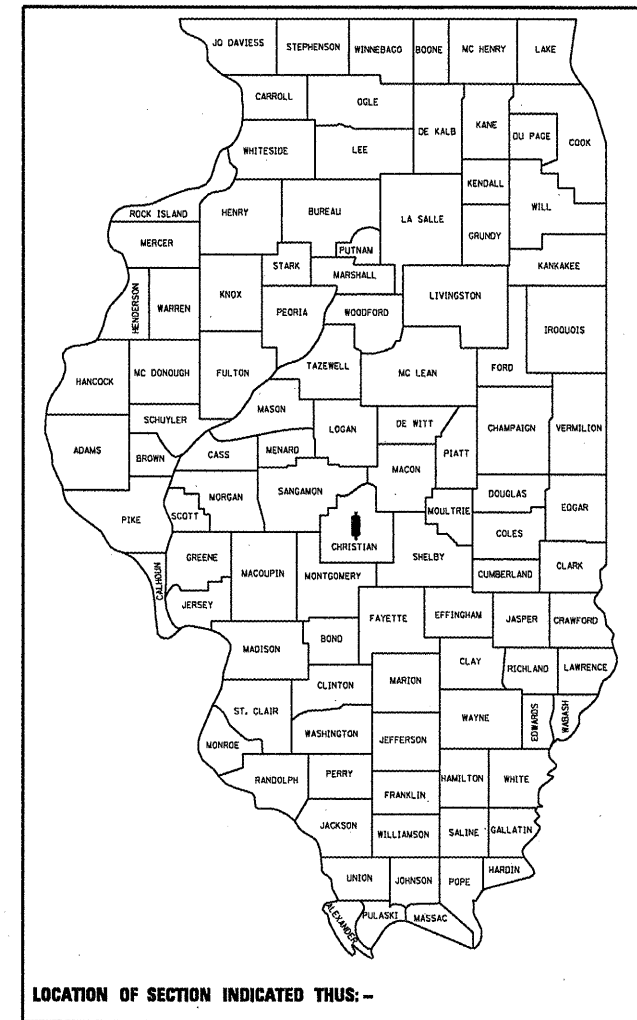
D-96-050-11

FOR INDEX OF SHEETS

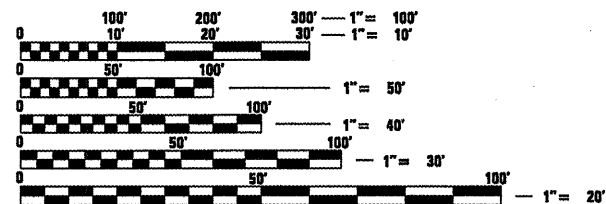
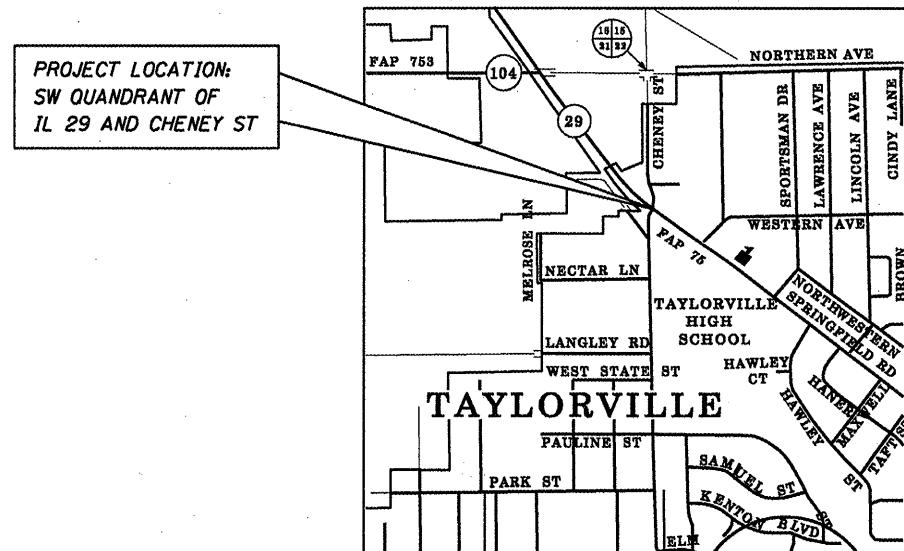
1. COVER SHEET
2. GENERAL NOTES
3. SUMMARY OF QUANTITIES
4. PLAN SHEET

HIGHWAY STANDARDS

000001-06
701701-07
780001-02



ADT = 16,000 (2009)
TRUCKS = 7.2%



FULL SIZE PLANS HAVE BEEN PREPARED USING STANDARD ENGINEERING SCALES. REDUCED SIZED PLANS WILL NOT CONFORM TO STANDARD SCALES. IN MAKING MEASUREMENTS ON REDUCED PLANS, THE ABOVE SCALES MAY BE USED.

J.U.L.I.E.
JOINT UTILITY LOCATION INFORMATION FOR EXCAVATION
1-800-892-0123
OR 811

PROJECT ENGINEER: JEFF MYERS (217)782-4761
TEAM MANAGER: TOM COX (217)524-7940

GROSS LENGTH = 0.00 FT. = 0.00 MILE
NET LENGTH = 0.00 FT. = 0.00 MILE

CONTRACT NO. 72E22

STATE OF ILLINOIS
DEPARTMENT OF TRANSPORTATION
DIVISION OF HIGHWAYS

SUBMITTED *February 10 20 11*
Rose Z. Omichil
DEPUTY DIRECTOR OF HIGHWAYS, REGION ENGINEER

March 4 20 11
Scott E. Stitt P.E.
ACTING ENGINEER OF DESIGN AND ENVIRONMENT

March 4 20 11
Christine M. Reed
DIRECTOR OF HIGHWAYS, CHIEF ENGINEER

**PRINTED BY THE AUTHORITY
OF THE STATE OF ILLINOIS**

GENERAL NOTES

1. ALL OF THE DISTURBED AREAS WITHIN THE RIGHT OF WAY NOT COVERED BY SURFACING MATERIAL INCLUDING THE EQUIPMENT STAGING AREA SHALL BE SEEDED. SEEDING WILL NOT BE PAID FOR SEPERATELY BUT INCLUDED IN THE COST OF THE ASSOCIATED PAY ITEMS.
2. CONTRACTOR SHALL PROVIDE ADEQUATE DRAINAGE AND EROSION PROTECTION FOR THE DURATION OF THIS PROJECT.
3. SEEDING WILL NOT BE PERMITTED AT ANY TIME WHEN THE GROUND IS FROZEN, WET OR IN AN UNTILLABLE CONDITION. LOCATIONS TO BE SEEDED SHALL BE DETERMINED BY THE ENGINEER.
4. THE CONTRACTOR SHALL BE RESPONSIBLE FOR PROTECTING UTILITY PROPERTY FROM CONSTRUCTION OPERATIONS AS OUTLINED IN ARTICLE 107.31 OF THE STANDARD SPECIFICATIONS. THE JULIE NUMBER IS 800-892-0123. A MINIMUM OF FORTY-EIGHT HOURS ADVANCE NOTICE IS REQUIRED. ANY DAMAGE TO THE UNDERGROUND FACILITIES, CAUSED BY THE CONTRACTOR SHALL BE REPAIRED TO THE SATISFACTION OF THE DEPARTMENT AT THE CONTRACTOR'S EXPENSE, INCLUDING TEMPORARY REPAIRS WHICH MAY BE REQUIRED TO KEEP THE FACILITY OPERATIONAL WHILE MATERIAL IS BEING OBTAINED TO MAKE PERMANENT REPAIRS.
5. THE LOCATIONS OF THOSE BURIED AND ABOVEGROUND UTILITIES SHOWN ARE APPROXIMATE. ARE SHOWN FOR CONTRACTOR INFORMATIONAL USE ONLY, AND ARE NOT TO BE REFERENCED FOR CONSTRUCTIONS PURPOSES. THE IMPLIED PRESENCE OR ABSENCE OF UTILITIES IS NOT TO BE CONSTRUED BY THE OWNER, ENGINEER, CONTRACTOR, OR SUBCONTRACTORS TO BE AN ACCURATE AND COMPLETE REPRESENTATION OF UTILITIES THAT MAY OR MAY NOT EXIST ON THE CONSTRUCTION SITE. BURIED AND ABOVEGROUND UTILITY LOCATION, IDENTIFICATION, AND MARKING ARE THE SOLE RESPONSIBILITY OF THE CONTRACTOR. REROUTING, DISCONNECTION, PROTECTION, ETC. OF ANY UTILITIES MUST BE COORDINATED BETWEEN THE CONTRACTOR, UTILITY COMPANY, AND OWNER. SITE SAFETY, INCLUDING THE AVOIDANCE OF HAZARDS ASSOCIATED WITH BURIED AND ABOVEGROUND UTILITIES, REMAINS THE SOLE RESPONSIBILITY OF THE CONTRACTOR.
6. THE THICKNESS OF HOT-MIX ASPHALT SHOWN ON THE PLANS IS THE NOMINAL THICKNESS. DEVIATIONS FROM THE NOMINAL THICKNESS WILL BE PERMITTED WHEN SUCH DEVIATIONS OCCUR DUE TO IRREGULARITIES IN THE EXISTING SURFACE OR BASE ON WHICH THE BITUMINOUS MIXTURE IS PLACED.
7. IN ADDITION TO FIELD SURVEYS AND AERIAL SURVEYS, PLAN DIMENSIONS AND DETAILS RELATIVE TO THE EXISTING FACILITIES HAVE BEEN TAKEN FROM EXISTING PLANS AND ARE SUBJECT TO CONSTRUCTION VARIATIONS. IT SHALL BE THE CONTRACTOR'S RESPONSIBILITY TO VERIFY SUCH DIMENSIONS AND DETAILS IN THE FIELD. SUCH VARIATIONS SHALL NOT BE A CAUSE FOR ADDITIONAL COMPENSATION DUE TO A CHANGE IN THE SCOPE OF THE WORK. HOWEVER, THE CONTRACTOR WILL BE PAID FOR THE QUANTITY ACTUALLY FURNISHED AT THE UNIT PRICE BID FOR THE WORK.
8. ANY REFERENCES OR CALL-OUTS IN THESE PLANS TO "BITUMINOUS CONCRETE" SHALL BE INTERPRETED TO MEAN "HOT-MIX ASPHALT".
9. ANY REFERENCE TO A STANDARD IN THESE PLANS SHALL BE INTERPRETED TO MEAN THE EDITION AS INDICATED BY THE SUBNUMBER LISTED ON THE INDEX OF SHEETS OR THE COPY OF THE STANDARD INCLUDED IN THESE PLANS.
10. UNLESS NOTED OTHERWISE, STATIONS AND OFFSETS REFER TO CENTERLINE OF PROJECT.
11. THE FOLLOWING RATES OF APPLICATION HAVE BEEN USED IN CALCULATING PLAN QUANTITIES:

GRANULAR MATERIALS	2.05 TONS/CU YD
--------------------	-----------------

COMMITMENTS

THERE ARE NO COMMITMENTS ON THIS PROJECT

EXAMINED <u>JANUARY 28</u> 20 <u>11</u> <i>Tommy Felt</i>
PROJECT IMPLEMENTATION ENGINEER
EXAMINED <u>FEBRUARY 10</u> , 20 <u>11</u> <i>John Williams</i>
PROGRAM DEVELOPMENT ENGINEER
DISTRICT SIX
EXAMINED <u>JAN 14</u> 20 <u>11</u> <i>Chris Wall</i>
OPERATIONS ENGINEER

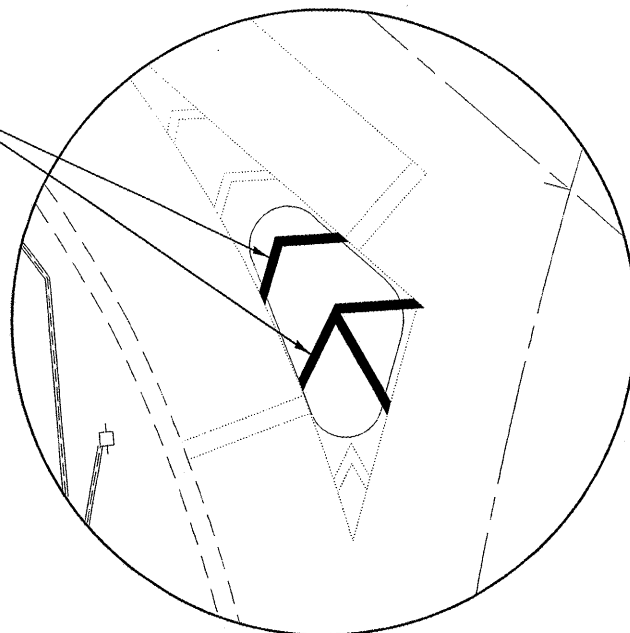
FILE NAME =	USER NAME = coxte	DESIGNED -	REVISED -	STATE OF ILLINOIS DEPARTMENT OF TRANSPORTATION	GENERAL NOTES	F.A.P. RTE.	SECTION	COUNTY	TOTAL SHEETS	SHEET NO.
ct:\pw\work\pws\d0253119\0672E22	-sht-gennote.dgn	DRAWN -	REVISED -			75	IN	CHRISTIAN	4	2
	PLOT SCALE = 40.0000' / IN.	CHECKED -	REVISED -							
	PLOT DATE = Feb-09-2011 03:09:11PM	DATE -	REVISED -							
					SCALE:	SHEET NO. OF SHEETS		STA. TO STA.		ILLINOIS FED. AID PROJECT
									CONTRACT NO. 72E22	

SUMMARY OF QUANTITIES				SW QUADRANT IL 29 AND CHENEY ST INTERSECTION 100% STATE
CODE NO.	PAY ITEM	UNIT	TOTAL QUANTITIES	CONSTRUCTION TYPE CODE 0004
31101000	SUBBASE GRANULAR MATERIAL, TYPE B	TON	10	10
35300700	PORTLAND CEMENT CONCRETE BASE COURSE 12"	SQ YD	29	29
44000500	COMBINATION CURB AND GUTTER REMOVAL	FOOT	52	52
59300100	CONTROLLED LOW-STRENGTH MATERIAL	CU YD	1	1
67100100	MOBILIZATION	L SUM	1	1
70102635	TRAFFIC CONTROL AND PROTECTION, STANDARD 701701	L SUM	1	1
70103815	TRAFFIC CONTROL SURVEILLANCE	CAL DA	3	3
73700200	REMOVE CONCRETE FOUNDATION - GROUND MOUNT	EACH	1	1
89502380	REMOVE EXISTING HANDHOLE	EACH	1	1
X4402020	CONCRETE MEDIAN SURFACE REMOVAL	SQ FT	99	99
* X7800650	URETHANE PAVEMENT MARKING - LINE 12"	FOOT	37	37

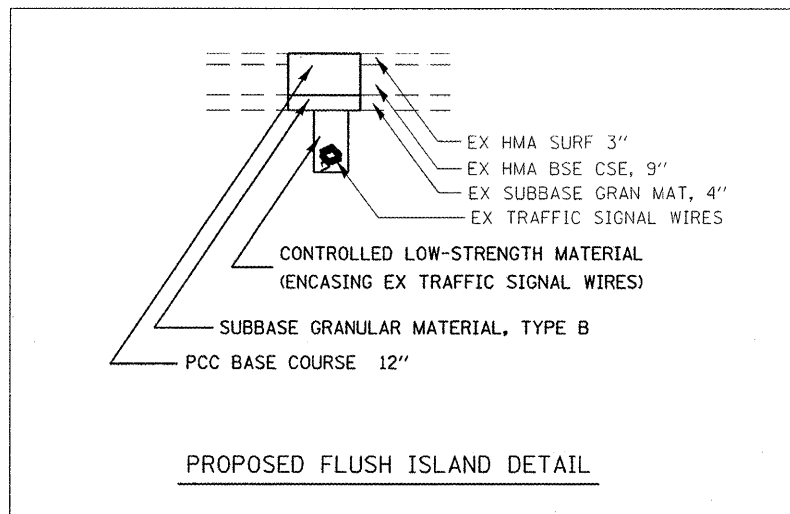
* SPECIALTY ITEM

URETHANE PAVEMENT MARKING - LINE 12"

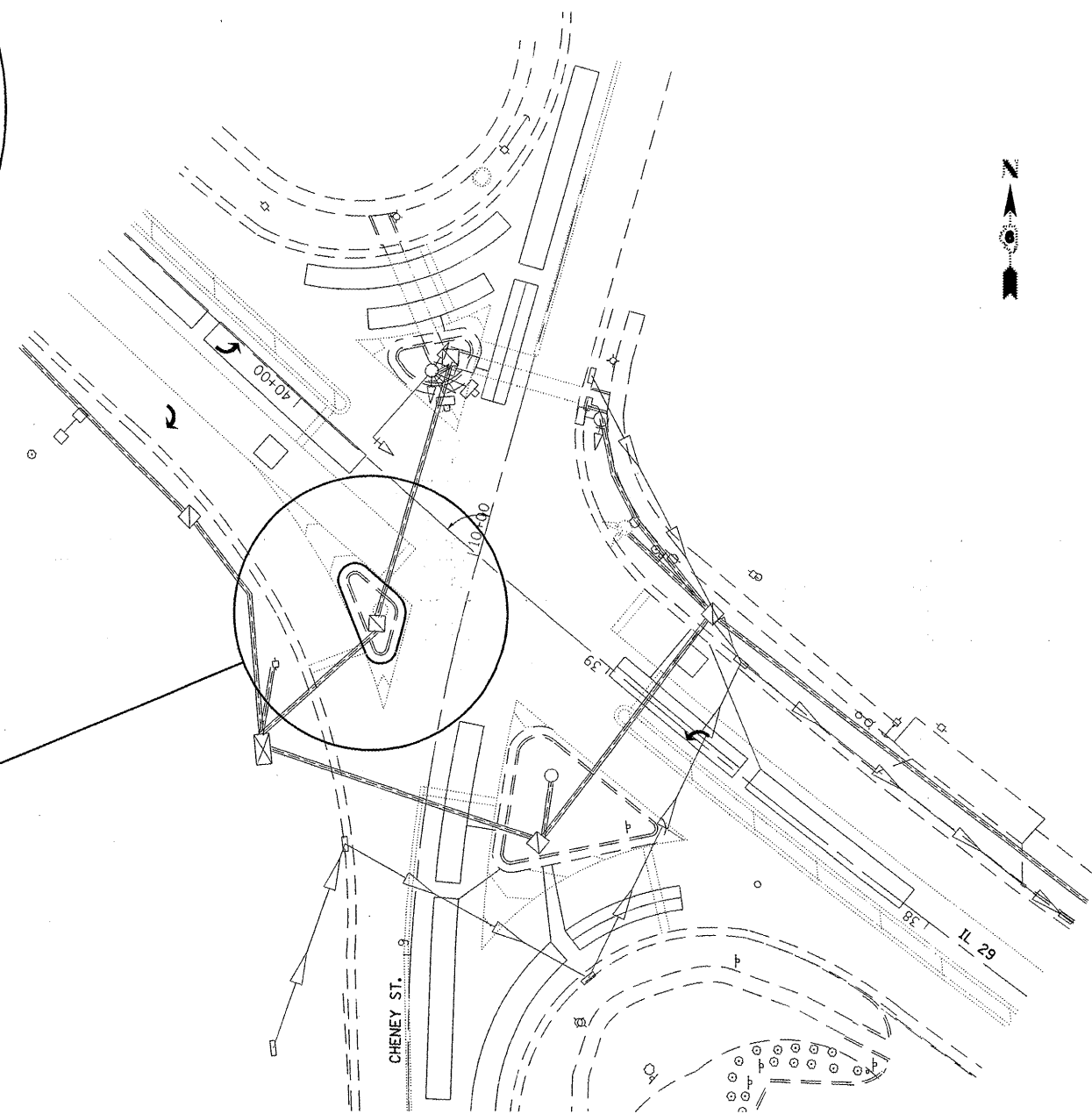
NOTE:
EVENLY SPACE STRIPES BETWEEN
EXISTING PAVEMENT MARKINGS



STRIPING DETAIL



PROPOSED FLUSH ISLAND DETAIL



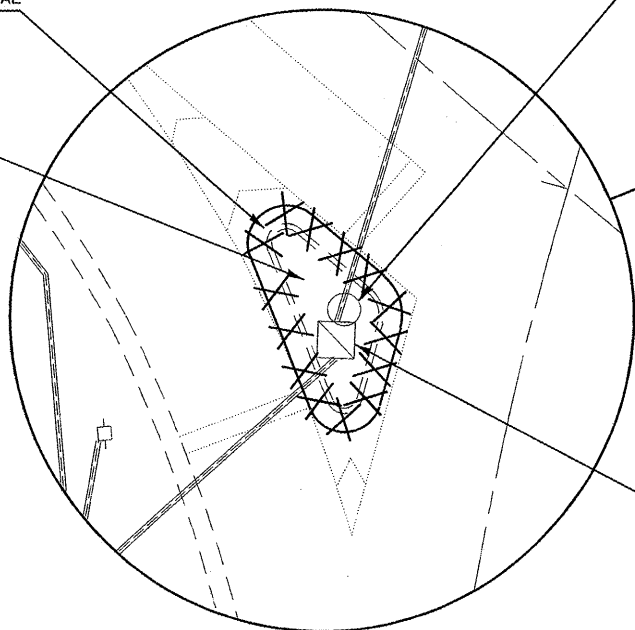
INTERSECTION OF
IL 29 & CHENEY ST

COMBINATION CURB AND GUTTER REMOVAL

CONCRETE MEDIAN SURFACE REMOVAL

REMOVE CONCRETE FOUNDATION
- GROUND MOUNT

REMOVE EXISTING HANDHOLE



ISLAND REMOVAL

FILE NAME =
c:\pwork\pwork\caxte\0253119\0672E2

USER NAME = caxte
-shtrplan.dgn
PLOT SCALE = 48.0000' / IN.
PLOT DATE = Feb-10-2011 04:33:40PM

DESIGNED -
DRAWN -
CHECKED -
DATE -

REVISED -
REVISED -
REVISED -
REVISED -

STATE OF ILLINOIS
DEPARTMENT OF TRANSPORTATION

PLAN SHEET

SCALE: 1" = 20' SHEET NO. OF SHEETS STA. TO STA.

F.A.P. RTE.	SECTION	COUNTY	TOTAL SHEETS	SHEET NO.
75	IN	CHRISTIAN	4	4
CONTRACT NO. 72E22				
ILLINOIS FED. AID PROJECT				