

STATE OF ILLINOIS  
DEPARTMENT OF TRANSPORTATION  
DIVISION OF HIGHWAYS

**PROPOSED  
HIGHWAY PLANS**

FAS ROUTE 677 CH3 (OAKLAND-ASHMORE RD.)  
SECTION (15-2,15-1,15,11)RS-1  
PROJECT ACRS-0677(103)  
RESURFACING  
COLES COUNTY

C-97-026-11

F.A.S. RTE.	SECTION	COUNTY	TOTAL SHEETS	SHEET NO.
677	(15-2,15-1,15,11)RS-1	COLES	63	1
		ILLINOIS	CONTRACT NO. 74507	

\* 63-7 = 54

D-97-007-11



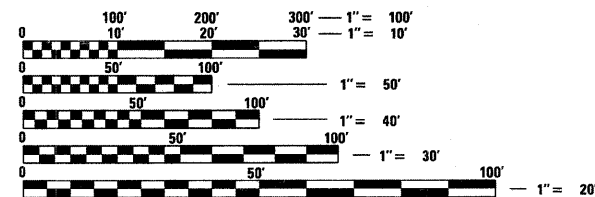
FOR INDEX OF SHEETS, SEE SHEET NO. 2

**PAVING OMISSIONS:**

STA. 349 + 34.54 TO STA. 351 + 86.46

STA. 480 + 89.50 TO STA. 480 + 98.60

ADT = 1400 (2009)

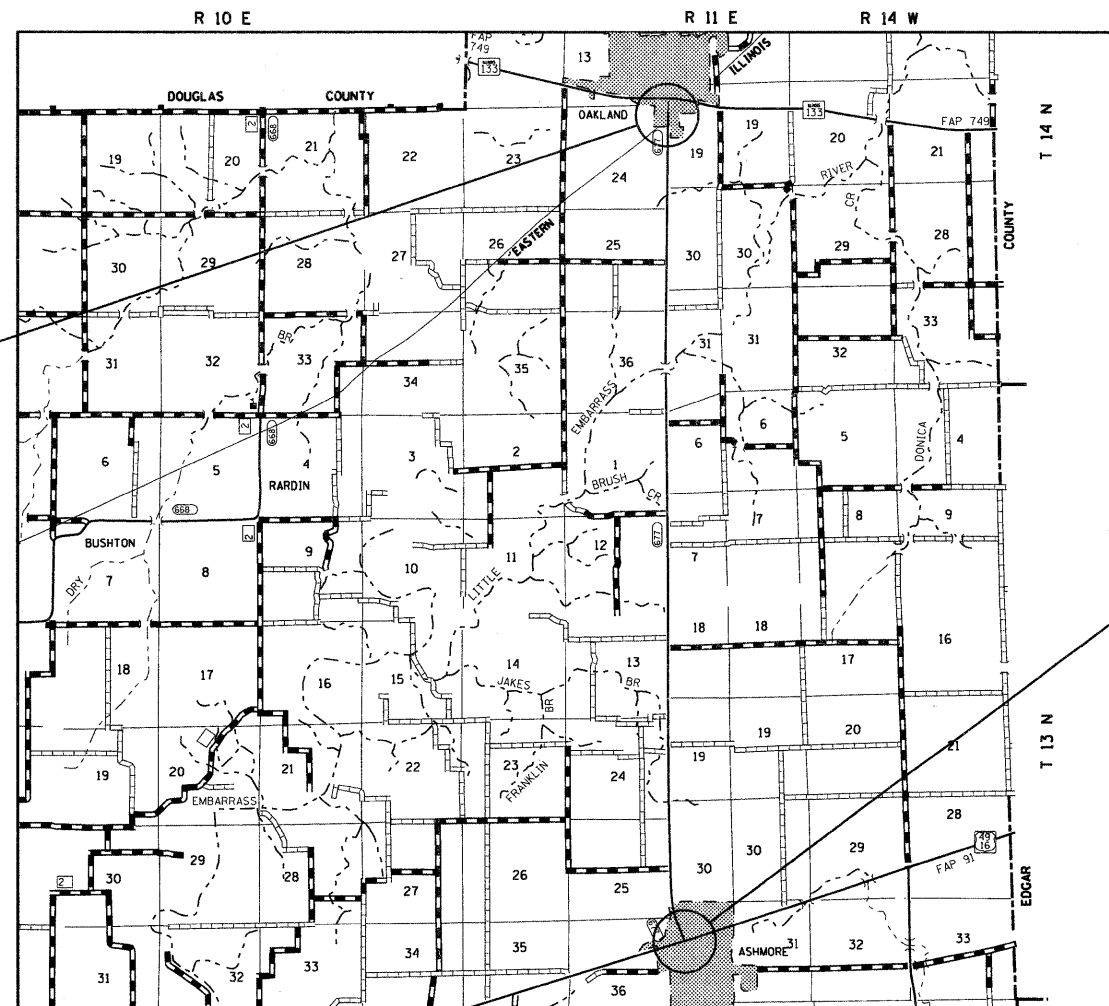


FULL SIZE PLANS HAVE BEEN PREPARED USING STANDARD ENGINEERING SCALES. REDUCED SIZED PLANS WILL NOT CONFORM TO STANDARD SCALES. IN MAKING MEASUREMENTS ON REDUCED PLANS, THE ABOVE SCALES MAY BE USED.

J.U.L.I.E.  
JOINT UTILITY LOCATION INFORMATION FOR EXCAVATION  
1-800-892-0123  
OR 811

PROJECT ENGINEER: TOM RONAN  
PROJECT MANAGER: NEIL SANDSCHAER

CONTRACT NO. 74507



FAS ROUTE 677  
SECTION (15-2,15-1,15,11)RS-1  
COLES COUNTY  
ENDS STA. 483 + 48.50

FAS ROUTE 677  
SECTION (15-2,15-1,15,11)RS-1  
COLES COUNTY  
BEGINS STA. 50 + 04.50

GROSS LENGTH = 43,344.0 FT. = 8.21 MILE  
NET LENGTH = 43,083.0 FT. = 8.16 MILE

STATE OF ILLINOIS  
DEPARTMENT OF TRANSPORTATION  
DIVISION OF HIGHWAYS

SUBMITTED Jan 31 20 11  
Donnell  
DEPUTY DIRECTOR OF HIGHWAYS, REGION ENGINEER

March 25 20 11  
Scott E. Still, P.E.  
Acting ENGINEER OF DESIGN AND ENVIRONMENT

March 25 20 11  
Christine M. Reed  
DIRECTOR OF HIGHWAYS, CHIEF ENGINEER

**PRINTED BY THE AUTHORITY  
OF THE STATE OF ILLINOIS**