

STATE OF ILLINOIS
DEPARTMENT OF TRANSPORTATION
DIVISION OF HIGHWAYS

**PROPOSED
HIGHWAY PLANS**

FAP ROUTE 91 (IL RTE 16)
SECTION D7 FLASHING BEACONS 2011-1

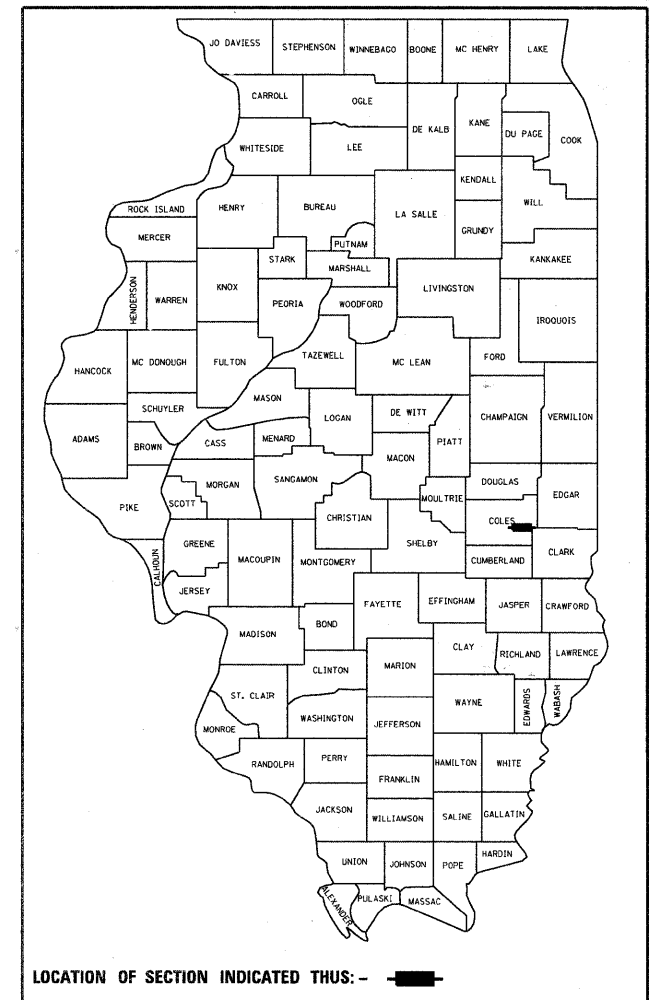
TYPE of IMPROVEMENT
COLES COUNTY

C-97-045-11

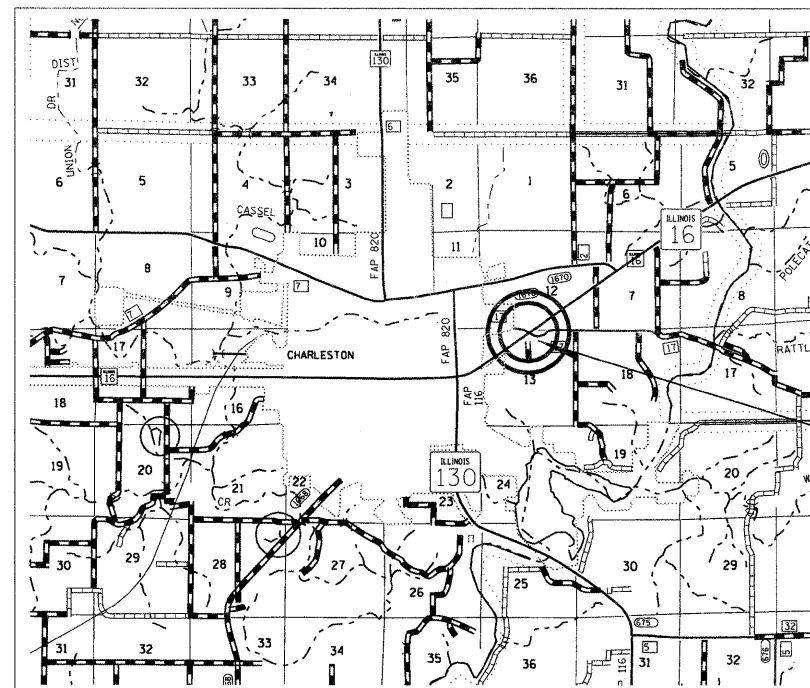
F.A.P. RTE.	SECTION	COUNTY	TOTAL SHEETS	SHEET NO.
91		COLES	5	1
		ILLINOIS	CONTRACT NO. 74516	

• D7 FLASHING BEACONS 2011-1

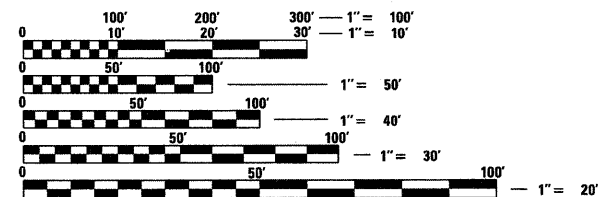
D-97-016-11



FOR INDEX OF SHEETS, SEE SHEET NO. 2



PROPOSED
PROJECT
LOCATION



FULL SIZE PLANS HAVE BEEN PREPARED USING STANDARD ENGINEERING SCALES. REDUCED SIZED PLANS WILL NOT CONFORM TO STANDARD SCALES. IN MAKING MEASUREMENTS ON REDUCED PLANS, THE ABOVE SCALES MAY BE USED.

J.U.L.I.E.
JOINT UTILITY LOCATION INFORMATION FOR EXCAVATION
1-800-892-0123
OR 811

PROJECT ENGINEER ROB MACKLIN
PROJECT MANAGER LYNN McCLELLAN

GROSS LENGTH = 1500 FT. = 0.28 MILE
NET LENGTH = 1500 FT. = 0.28 MILE

CONTRACT NO. 74516

STATE OF ILLINOIS
DEPARTMENT OF TRANSPORTATION
DIVISION OF HIGHWAYS

SUBMITTED Feb. 7 20 11
Rogert Druehl
DEPUTY DIRECTOR OF HIGHWAYS, REGION ENGINEER

March 25 20 11
Scott E. Stitt, P.E.
ENGINEER OF DESIGN AND ENVIRONMENT

March 25 20 11
Christine M. Reed
DIRECTOR OF HIGHWAYS, CHIEF ENGINEER

**PRINTED BY THE AUTHORITY
OF THE STATE OF ILLINOIS**