

F.A.P. RTE.	SECTION	COUNTY	TOTAL SHEETS	SHEET NO.
312	64-1VBR	ST. CLAIR	259	1
FED. ROAD DIST. NO.		ILLINOIS	CONTRACT NO. 76882	

INDEX OF SHEETS

- 1 COVER SHEET
- 2 GENERAL NOTES
- 3 COMMITMENTS, PERTINENT INFORMATION, AND MIXTURE DESIGN
- 4-5 SUMMARY OF QUANTITIES
- 6-14 TYPICAL SECTIONS
- 15-16 SCHEDULES OF QUANTITIES
- 17 ALIGNMENTS, TIES, AND BENCHMARKS
- 18-22 PLAN AND PROFILE SHEETS
- 23-24 DETOUR PLAN
- 25-26 STORM WATER POLLUTION PREVENTION PLAN
- 27-29 EROSION CONTROL PLAN
- 30 DRAINAGE PROFILES
- 31-35 DRAINAGE CROSS SECTIONS
- 36-43 PLAT OF HIGHWAYS
- 44-45 PAVEMENT MARKING PLAN
- 46-47 REMOVAL PLAN
- 48-49 GRADING PLAN
- 50-52 DETAILS
- 53-100 SN 082-0038 PLANS
- 101-130 SN 082-0030 PLANS (ORIGINAL PLANS)
- 131-159 SN 082-0030 PLANS (REHABILITATION PLANS)
- 160-161 SN 082-0030 PLANS (SHORING TOWER PLANS)
- 162-228 SN 082-0030 SHOP DRAWINGS
- 229-259 CROSS SECTIONS
- HIGHWAY STANDARDS

STATE OF ILLINOIS
DEPARTMENT OF TRANSPORTATION

DIVISION OF HIGHWAYS
PROPOSED
HIGHWAY PLANS

FAP ROUTE 312 (IL 3)
SECTION 64-1VBR
PROJECT: ACFRF-0312(038)
STRUCTURE REPLACEMENT
ST. CLAIR COUNTY
C-98-038-05

IDOT HIGHWAY STANDARDS

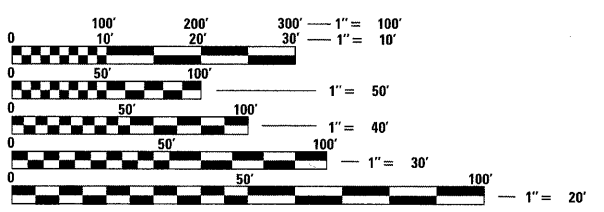
000001-05	482006-03	604056-03	631031-08
001001-02	515001-03	606001-04	635006-03
001006	542401-01	606301-04	635011-02
280001-05	602011-01	609001-05	701901-01
420001-07	602016-01	609006-05	780001-02
420401-08	602301-02	630001-08	781001-03
482001-02	602306-02	630201-06	BLR 21-8
421001-02			

TRAFFIC DATA

IL 3
ADT = 12,300 (2007)
ADT = 16,400 (2031)
SU = 3.7%
MU = 4.2%

DESIGN DESIGNATION

FAP 312 (IL 3) 1960(31) OTHER PRINCIPAL ARTERIAL 6.03(PCC-20)

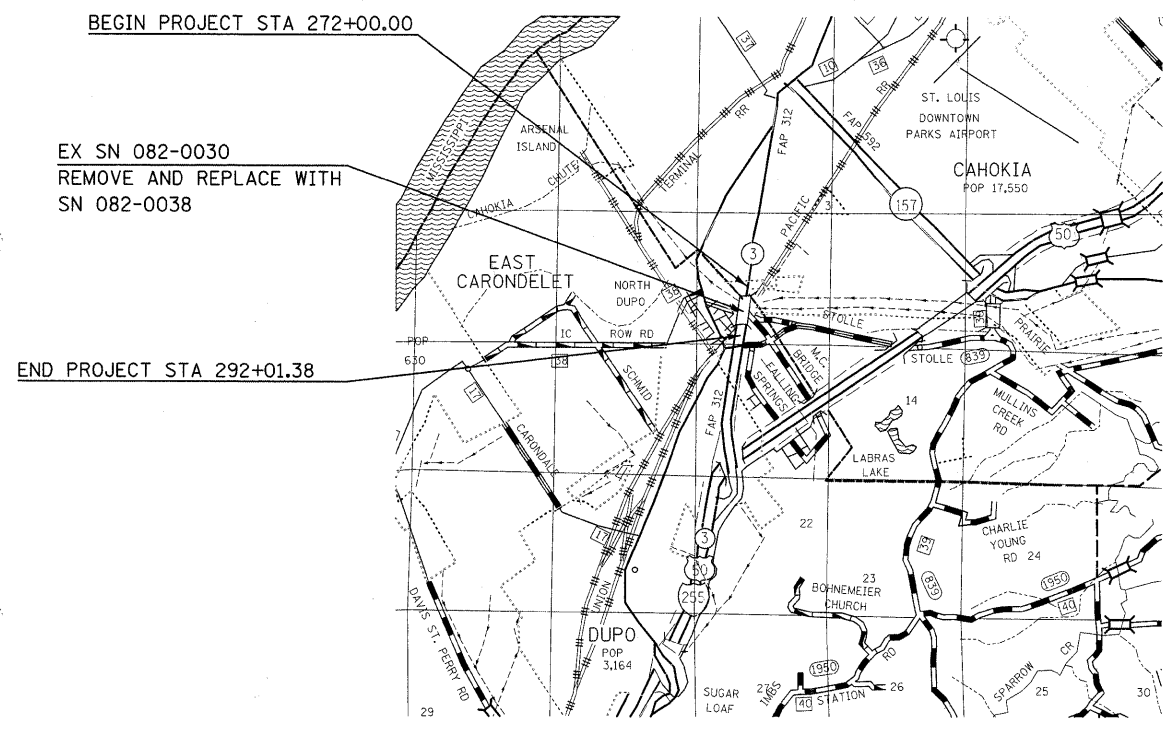


FULL SIZE PLANS HAVE BEEN PREPARED USING STANDARD ENGINEERING SCALES. REDUCED SIZED PLANS WILL NOT CONFORM TO STANDARD SCALES. IN MAKING MEASUREMENTS ON REDUCED PLANS, THE ABOVE SCALES MAY BE USED.

J.U.L.I.E.
JOINT UTILITY LOCATION INFORMATION FOR EXCAVATION
1-800-892-0123
OR 811

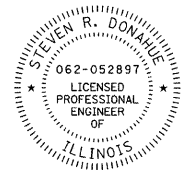
PROJECT ENGINEER : PATTI LeBEAU (618) 346-3179
PROJECT MANAGER : ART MUEHLFELD (618) 346-3209

CONTRACT NO. 76882

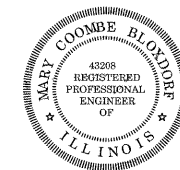


LOCATION MAP

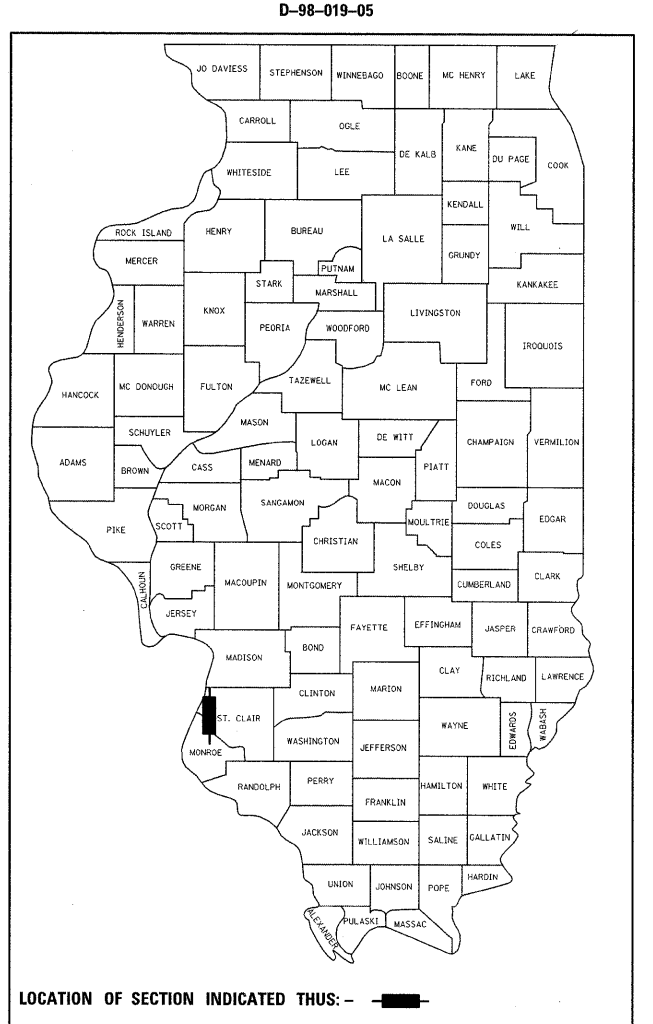
GROSS LENGTH OF PROJECT 2,001.38 FEET (0.379 MILES)
NET LENGTH OF PROJECT 2,001.38 FEET (0.379 MILES)



Steven R. Donahue 8/6/10
Steven R. Donahue, P.E.
License Expires 11/30/2011
My seal applies to sheets:



Mary Coombe Bloxdorf 8/6/10
Mary Coombe Bloxdorf, P.E.
License Expires 11/30/2011
My seal applies to sheets:



PLANS PREPARED BY
HORNER & SHIFRIN, INC. ENGINEERS
640 Pierce Boulevard, Suite 200
O'Fallon, Illinois 62269
Phone: (618) 622-3040
www.HornerShifrin.com
Illinois Professional Design Firm
No. 184-000435
License Expires 4/30/2011

STATE OF ILLINOIS
DEPARTMENT OF TRANSPORTATION
DIVISION OF HIGHWAYS

SUBMITTED Aug 12 2010
[Signature]
DEPUTY DIRECTOR OF HIGHWAYS, REGIONS ENGINEER

October 1 2010
[Signature]
ENGINEER OF DESIGN AND ENVIRONMENT

October 1 2010
[Signature]
DIRECTOR OF HIGHWAYS, CHIEF ENGINEER

PRINTED BY THE AUTHORITY
OF THE STATE OF ILLINOIS

USER NAME = bernechmann
 LAST SAVED = 8/4/2010
 PLOT DATE = 8/4/2010
 PLOT TIME = 2:51:40 PM
 PLOT SCALE = 50.00000 / IN.
 PEN TABLE = V8.tbl
 PLOT DRIVER = TR:xeo620*To-File.plt
 FILE NAME = I:\07078\Cad\TX\Plans\001-D876882-Shr-Cover.dgn

1-3, 6-14, 17-22, 30-35, 50-52, 229-259

4-5, 15-16, 23-29, 44-49