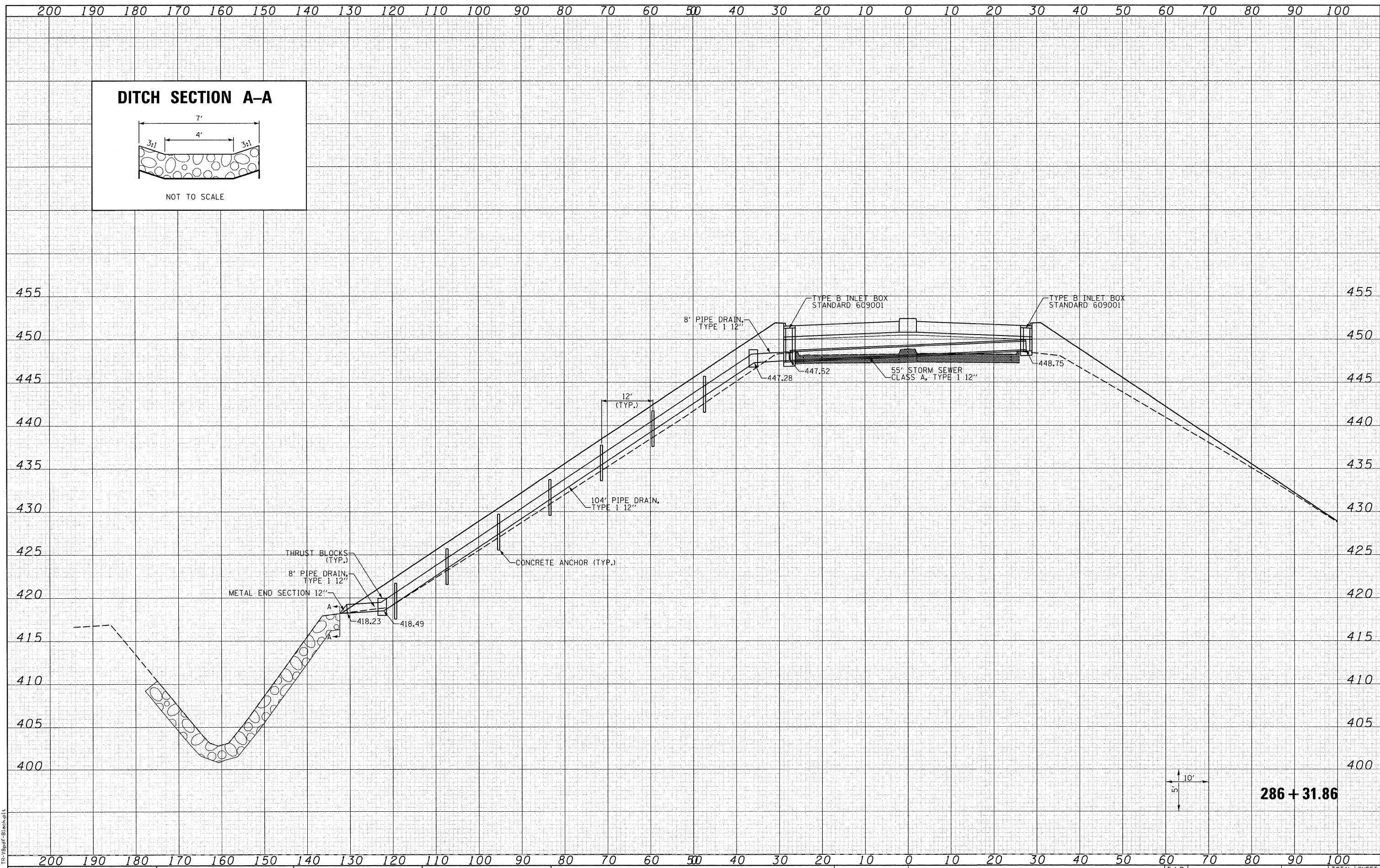


DATE	
BY	
SURVEYED	
PLOTTED	
TEMPLATE	
AREAS CHECKED	
FINAL SURVEY	
NOTE BOOK	
NO.	

DATE	
BY	
SURVEYED	
PLOTTED	
TEMPLATE	
AREAS CHECKED	
ORIGINAL SURVEY	
NOTE BOOK	
NO.	

LAST SAVED = 8/9/2010
 PEN TABLE = 08-Hair.frb1
 PLOT DRIVER = FR-8pdf-Block.plt



286 + 31.86

FILE NAME =	USER NAME = bertschmann	DESIGNED -	REVISED -	STATE OF ILLINOIS DEPARTMENT OF TRANSPORTATION		DRAINAGE CROSS SECTIONS		F.A.P. RTE.	SECTION	COUNTY	TOTAL SHEETS	SHEET NO.
h:\07078\cod\l\plans\098-D876882-XSht-IL3-Culvert-ts.dgn	ver-ts.dgn	DRAWN -	REVISED -			312	64-1VBR	ST. CLAIR	259	32		
PLOT SCALE = 10,0005' / IN.		CHECKED -	REVISED -			CONTRACT NO. 76882						
PLOT DATE = 8/9/2010 10:21:51 AM		DATE -	REVISED -			ILLINOIS FED. AID PROJECT						
				SCALE: 1=10'H =5'V		SHEET NO. 2 OF 5 SHEETS		STA. 286+31.86 TO STA. 286+31.86				