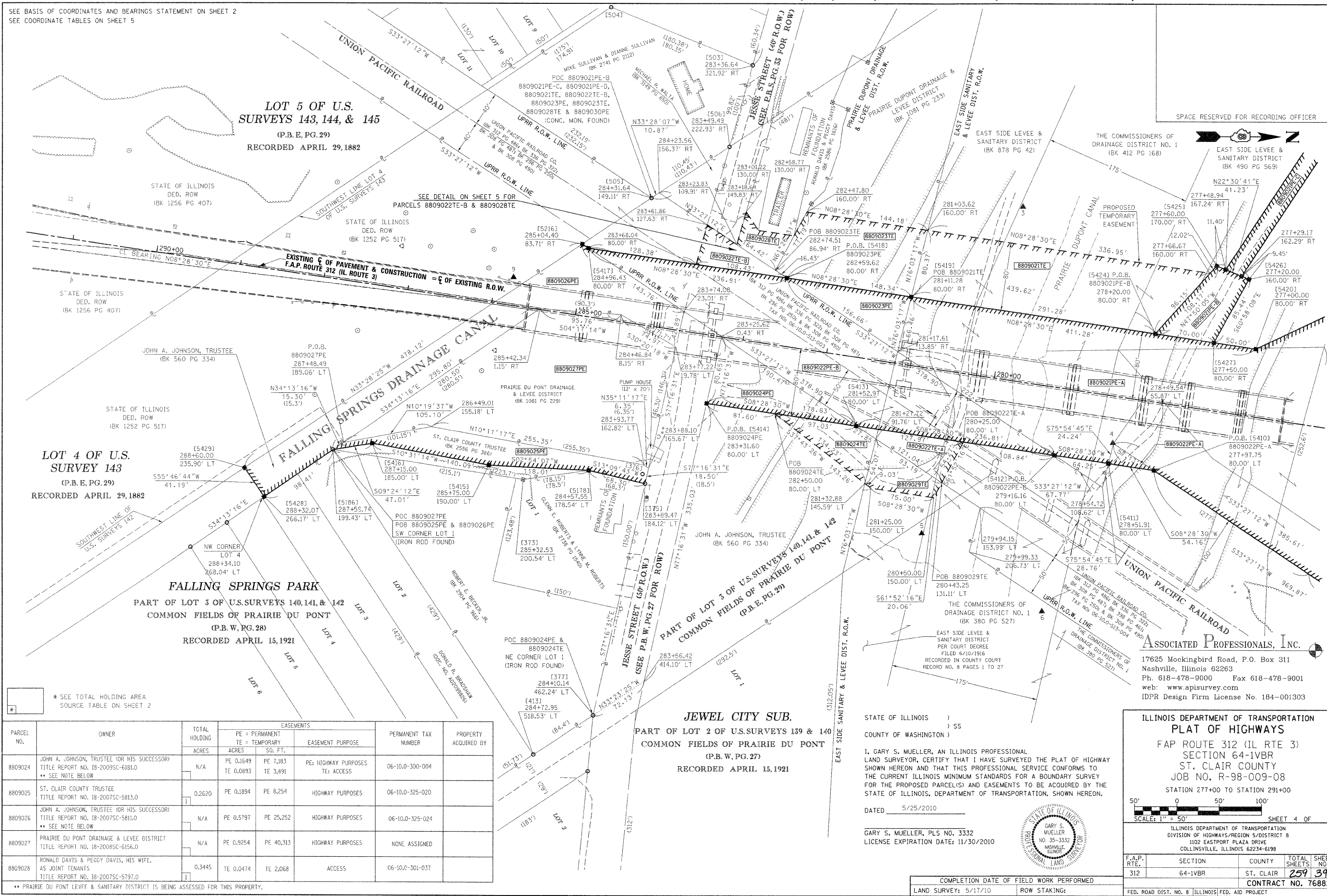


PART OF THE PRAIRIE DU PONT COMMONFIELDS AND PART OF THE SW 14 OF SECTION 10, T1N, R10W, OF THE 3RD PM, ST. CLAIR COUNTY, ILLINOIS

SEE BASIS OF COORDINATES AND BEARINGS STATEMENT ON SHEET 2  
SEE COORDINATE TABLES ON SHEET 5



SPACE RESERVED FOR RECORDING OFFICER

THE COMMISSIONERS OF DRAINAGE DISTRICT NO. 1 (BK 412 PG 168)  
EAST SIDE LEVEE & SANITARY DISTRICT (BK 490 PG 569)

PROPOSED TEMPORARY EASEMENT  
PRAIRIE DU PONT CANAL  
EAST SIDE LEVEE & SANITARY DISTRICT (BK 878 PG 42)

THE COMMISSIONERS OF DRAINAGE DISTRICT NO. 1 (BK 412 PG 168)  
EAST SIDE LEVEE & SANITARY DISTRICT (BK 490 PG 569)

THE COMMISSIONERS OF DRAINAGE DISTRICT NO. 1 (BK 412 PG 168)  
EAST SIDE LEVEE & SANITARY DISTRICT (BK 490 PG 569)

THE COMMISSIONERS OF DRAINAGE DISTRICT NO. 1 (BK 412 PG 168)  
EAST SIDE LEVEE & SANITARY DISTRICT (BK 490 PG 569)

THE COMMISSIONERS OF DRAINAGE DISTRICT NO. 1 (BK 412 PG 168)  
EAST SIDE LEVEE & SANITARY DISTRICT (BK 490 PG 569)

THE COMMISSIONERS OF DRAINAGE DISTRICT NO. 1 (BK 412 PG 168)  
EAST SIDE LEVEE & SANITARY DISTRICT (BK 490 PG 569)

THE COMMISSIONERS OF DRAINAGE DISTRICT NO. 1 (BK 412 PG 168)  
EAST SIDE LEVEE & SANITARY DISTRICT (BK 490 PG 569)

THE COMMISSIONERS OF DRAINAGE DISTRICT NO. 1 (BK 412 PG 168)  
EAST SIDE LEVEE & SANITARY DISTRICT (BK 490 PG 569)

THE COMMISSIONERS OF DRAINAGE DISTRICT NO. 1 (BK 412 PG 168)  
EAST SIDE LEVEE & SANITARY DISTRICT (BK 490 PG 569)

THE COMMISSIONERS OF DRAINAGE DISTRICT NO. 1 (BK 412 PG 168)  
EAST SIDE LEVEE & SANITARY DISTRICT (BK 490 PG 569)

THE COMMISSIONERS OF DRAINAGE DISTRICT NO. 1 (BK 412 PG 168)  
EAST SIDE LEVEE & SANITARY DISTRICT (BK 490 PG 569)

THE COMMISSIONERS OF DRAINAGE DISTRICT NO. 1 (BK 412 PG 168)  
EAST SIDE LEVEE & SANITARY DISTRICT (BK 490 PG 569)

THE COMMISSIONERS OF DRAINAGE DISTRICT NO. 1 (BK 412 PG 168)  
EAST SIDE LEVEE & SANITARY DISTRICT (BK 490 PG 569)

THE COMMISSIONERS OF DRAINAGE DISTRICT NO. 1 (BK 412 PG 168)  
EAST SIDE LEVEE & SANITARY DISTRICT (BK 490 PG 569)

THE COMMISSIONERS OF DRAINAGE DISTRICT NO. 1 (BK 412 PG 168)  
EAST SIDE LEVEE & SANITARY DISTRICT (BK 490 PG 569)

**ASSOCIATED PROFESSIONALS, INC.**  
17625 Mockingbird Road, P.O. Box 311  
Nashville, Illinois 62263  
Ph. 618-478-9000 Fax 618-478-9001  
web: www.apisurvey.com  
IDPR Design Firm License No. 184-001303

STATE OF ILLINOIS )  
COUNTY OF WASHINGTON ) SS  
I, GARY S. MUELLER, AN ILLINOIS PROFESSIONAL LAND SURVEYOR, CERTIFY THAT I HAVE SURVEYED THE PLAT OF HIGHWAY SHOWN HEREON AND THAT THIS PROFESSIONAL SERVICE CONFORMS TO THE CURRENT ILLINOIS MINIMUM STANDARDS FOR A BOUNDARY SURVEY FOR THE PROPOSED PARCEL(S) AND EASEMENTS TO BE ACQUIRED BY THE STATE OF ILLINOIS, DEPARTMENT OF TRANSPORTATION, SHOWN HEREON.  
DATED 5/25/2010

GARY S. MUELLER, PLS NO. 3332  
LICENSE EXPIRATION DATE: 11/30/2010



COMPLETION DATE OF FIELD WORK PERFORMED  
LAND SURVEY: 5/17/10 ROW STAKING:

FED. ROAD DIST. NO. 8 ILLINOIS FED. AID PROJECT

ILLINOIS DEPARTMENT OF TRANSPORTATION PLAT OF HIGHWAYS				
FAP ROUTE 312 (IL RTE 3)				
SECTION 64-1VBR				
ST. CLAIR COUNTY				
JOB NO. R-98-009-08				
STATION 277+00 TO STATION 291+00				
SCALE: 1" = 50'				
SHEET 4 OF				
ILLINOIS DEPARTMENT OF TRANSPORTATION DIVISION OF HIGHWAYS/REGION 5/DISTRICT 8 1102 EASTPORT PLAZA DRIVE COLLINGSVILLE, ILLINOIS 62234-6198				
F.A.P. RTE.	SECTION	COUNTY	TOTAL SHEETS	SHEET NO.
312	64-1VBR	ST. CLAIR	259	39
CONTRACT NO. 76882				

\* SEE TOTAL HOLDING AREA SOURCE TABLE ON SHEET 2

PARCEL NO.	OWNER	TOTAL HOLDING ACRES	EASEMENTS		PERMANENT TAX NUMBER	PROPERTY ACQUIRED BY
			PE = PERMANENT ACRES	TE = TEMPORARY SQ. FT.		
8809024	JOHN A. JOHNSON, TRUSTEE (OR HIS SUCCESSORS) TITLE REPORT NO. 18-2009SC-6181.0 ** SEE NOTE BELOW	N/A	PE 0.1649 TE 0.0893	PE 7,183 TE 3,891	06-10.0-300-004	
8809025	ST. CLAIR COUNTY TRUSTEE TITLE REPORT NO. 18-2007SC-5813.0	0.2620	PE 0.1894	PE 8,254	06-10.0-325-020	
8809026	JOHN A. JOHNSON, TRUSTEE (OR HIS SUCCESSORS) TITLE REPORT NO. 18-2007SC-5811.0 ** SEE NOTE BELOW	N/A	PE 0.5797	PE 25,252	06-10.0-325-024	
8809027	PRAIRIE DU PONT DRAINAGE & LEVEE DISTRICT TITLE REPORT NO. 18-2008SC-6156.0	N/A	PE 0.9254	PE 40,313	NONE ASSIGNED	
8809028	RONALD DAVIS & PEGGY DAVIS, HIS WIFE, AS JOINT TENANTS TITLE REPORT NO. 18-2007SC-5797.0	0.3445	TE 0.0474	TE 2,068	06-10.0-301-037	

\*\* PRAIRIE DU PONT LEVEE & SANITARY DISTRICT IS BEING ASSESSED FOR THIS PROPERTY.