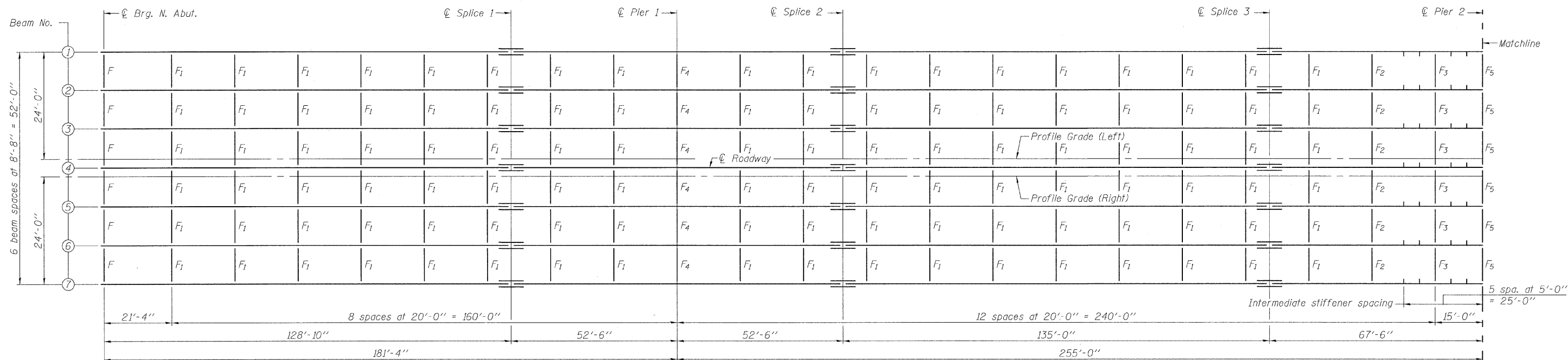
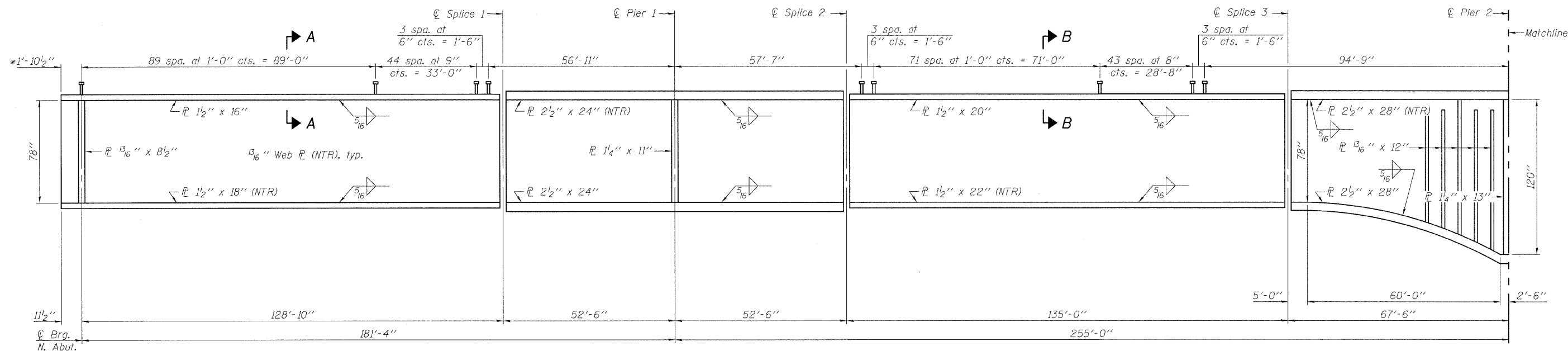


STATE OF ILLINOIS
DEPARTMENT OF TRANSPORTATION



PARTIAL FRAMING PLAN



PARTIAL GIRDER ELEVATION

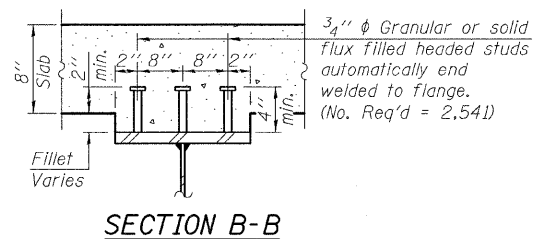
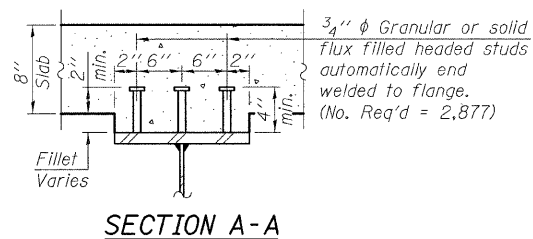
"NTR" denotes plates to which notch toughness requirements are applicable.

Notes:

- All flanges, web plates, bearing stiffeners, intermediate stiffeners, and splice plates shall be AASHTO M270 Grade 50.
- Load carrying components designated "NTR" shall conform to the Supplemental Requirements for Notch Toughness, Zone 2.
- Girder ends and bearing stiffeners at both Abuts. shall be fabricated parallel to the backwall in its final position.
- See sheet 30 of 48 for spans 3 and 4.
- See sheet 32 of 48 for parabolic haunch detail.

STRUCTURAL STEEL
SPANS 1 AND 2
STRUCTURE NO. 082-0038

| |
|---------------|
| DESIGNED EML |
| CHECKED KAK |
| DRAWN AJF/EML |
| CHECKED JJD |



HORNER &
SHIFRIN, INC.
ENGINEERS

| | | | | | |
|---------------------------|--------------------|--------------------|---------------------|---------------------|-----------------|
| SHEET NO. 29 48 SHEETS | F.A.P. RTE. 312 | SECTION 64-1VBR | COUNTY ST. CLAIR | TOTAL SHEETS 259 | SHEET NO. 81 |
| | CONTRACT NO. 76882 | | | | |
| ILLINOIS FED. AID PROJECT | | | | | |