

SKETCH SHOWING WORKING POINTS OF BEAMS & GIRDERS
Note: Bottom of Slab and Top of Beams and Girders to be flush at Working Points

TOP OF BEAM ELEVATIONS AT WORKING POINTS

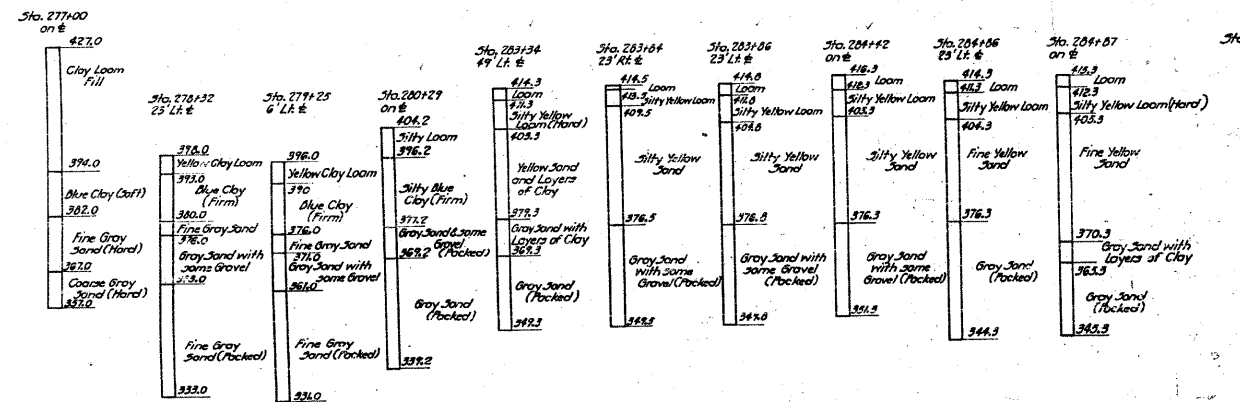
BEAM NO.	WORKING POINTS															
	A	B	C	D	E	F	G	H	J	K	L	M	N	P	Q	R
1 C. 10	445.24	446.61	447.79	448.39	448.82	449.33	449.72	450.37	450.97	451.34	451.34	451.07	450.79	450.57	449.96	449.37
2 E. 9	445.30	446.66	447.84	448.44	448.87	449.30	449.77	450.65	451.03	451.39	451.39	451.12	450.85	450.62	450.01	449.42
3 E. 8	445.35	446.72	447.89	448.49	448.92	449.35	449.82	450.70	451.08	451.44	451.44	451.18	450.90	450.67	450.07	449.48
4 E. 7	445.40	446.77	447.94	448.54	448.97	449.40	449.87	450.75	451.13	451.50	451.50	451.23	450.95	450.72	450.12	449.53
5 E. 6	445.45	446.82	447.99	448.59	449.02	449.45	449.92	450.80	451.18	451.54	451.54	451.28	451.00	450.77	450.17	449.58

Note: Elevations given are those before D.I. or L.L. deflection takes place.

MO. PAC. R.R.
BUILT 195 BY
STATE OF ILLINOIS
F.A. RT. 4' SEC. 64-1-VB-VE-VF
STA. 281+07.12
LOADING H 20

NAME PLATE DETAIL
See Standard 2113

To be furnished and placed on the concrete end post at a location directed by the Engineer - (Section 64-118)



BORINGS

Borings are given only as a guide to bidders in estimating soil conditions which may be encountered in the work.

Note: See Sheet #26 for additional borings

COMPUTED	W. F. Willy	EXAMINED	B-10 1954
CHECKED	W. H. Bommer	DRAWN	W. F. Willy
DRAWN	W. F. Willy	CHECKED	R. Miller
CHECKED	W. F. Willy	APPROVED	R. B. Hartman
ASSEMBLED			
CHECKED			

BAR SIZES SHOWN	6/8	5/8	3/4	3/8	1/2	1"	1 1/2"	1 3/4"
BAR NUMBER FOR SIZE ABOVE	4	5	6	7	8	9	10	11

SUMMARY OF QUANTITIES

ITEM	SECTION V.D.	SECTION V.D.	SECTION V.F.	SECTION V.E.
Class X Concrete	Cu. Yds.	1797.3	1241.5	
Reinforcement Bars	Lbs.	233920	273810	
Structural Steel Carbon	Lbs.		1111800	1811280
Structural Steel A36 (Low Alloy)	Lbs.		509800	509800
12" Metal Shell Piles	Lin. Ft.	13634		
14" Metal Shell Piles	Lin. Ft.	5860		
Structural Steel	Lbs.	520		
12" Metal Shell Test Piles	Each	3		
14" Metal Shell Test Piles	Each	7	10	
Cast Iron Frames	Each			
Name Plate	Each	1		
Corrugated Metal Pipe-6"	Lin. Ft.		500.	
Borrow Excavation	Cu. Yds.	55140		
Class A Excavation for Structures	Cu. Yds.	2000		

GENERAL NOTES

SECTION 64-110
Class X Concrete to be used throughout. Before the Superstructure is placed, the Contractor for Section 64-110 shall construct the embankments as shown on sheets 14-19 in accordance with Sec. 16 of the Standard Specifications. Mechanical composition shall be used.

SECTION 64-111
Reinforcement Bars shall conform to ASTM A-305. Reinforcement Bars shall be placed in accordance with the Standard Specifications. Mechanical composition shall be used.

SECTION 64-112
12" Metal Shell Piles shall be driven to the depth shown on sheets 14-19 in accordance with Sec. 16 of the Standard Specifications. Mechanical composition shall be used.

SECTION 64-113
14" Metal Shell Piles shall be driven to the depth shown on sheets 14-19 in accordance with Sec. 16 of the Standard Specifications. Mechanical composition shall be used.

SECTION 64-114
Cast Iron Frames shall be furnished and installed by the Contractor.

SECTION 64-115
All main truss connections both shop and field shall be bolted. Sub-punches shall be used to punch the holes in the members. All members are assembled or drilled from the shop while members are assembled. All connecting parts shall be matched and members are assembled.

SECTION 64-116
All trusses beam and girder spans will be inspected by the Illinois Division of Highways while assembled.

SECTION 64-117
No steel shall be painted until after assembly and inspection.

SECTION 64-118
To suit the main truss members carbon steel shall be used over and over material 2" thick or over shall be used and formed or drilled from the shop. Material in the shop shall be painted as shown on sheets 14-19 in accordance with Sec. 16 of the Standard Specifications.

SECTION 64-119
Flare beam connections shall be formed to the shape shown on sheets 14-19 in accordance with Sec. 16 of the Standard Specifications. In through holes, the rivets shall be full size. Holes for the turned pins shall be for a tight driving fit.

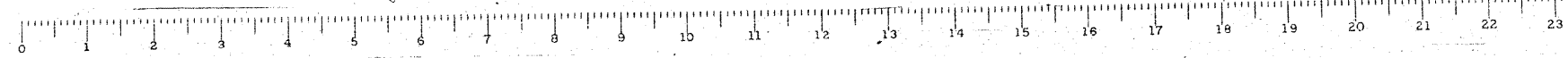
SECTION 64-120
The pitch of rivets in ends of compression members shall be in accordance with Art. 2.18 of the Standard Specifications. In through holes, the rivets shall be stopped and spaced as to maintain the full section called for on the stress sheet.

SECTION 64-121
All Structural Steel shall be given one shop coat of paint in accordance with Art. 2.18 of the Standard Specifications. In through holes, the rivets shall be stopped and spaced as to maintain the full section called for on the stress sheet.

SECTION 64-122
All surfaces of rollers, shoes, rollers, rollers and rollers shall be painted the same as other structural steel.

SECTION 64-123
Paint for the shop coat shall be furnished by the Contractor for Sec. 64-116. All painting shall be inspected by the Illinois Division of Highways.

GRADE SEPARATION
MISSOURI PACIFIC R.R.
NORTH OF DUPO
F.A. ROUTE 4 - SEC. 64-1-VB-VE-VF
ST. CLAIR COUNTY



FOR INFORMATION ONLY