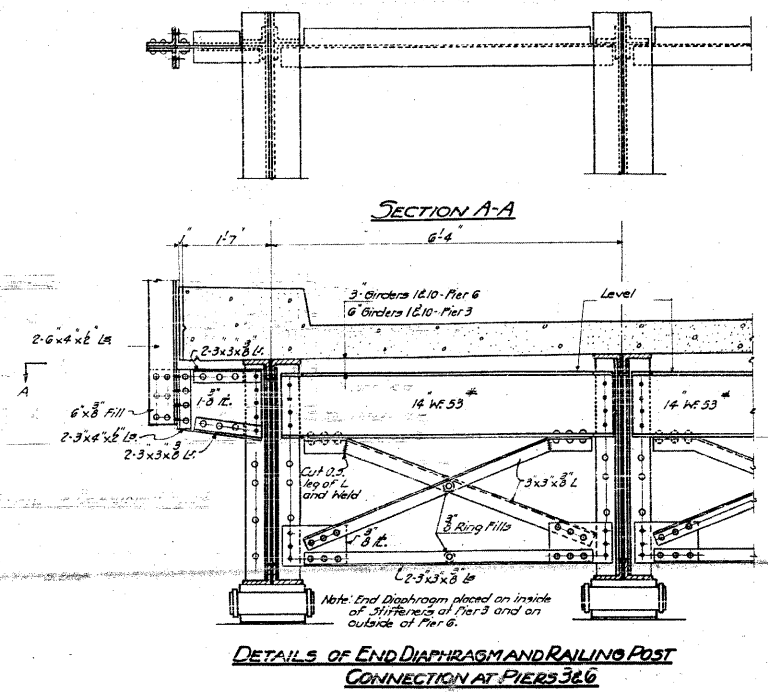
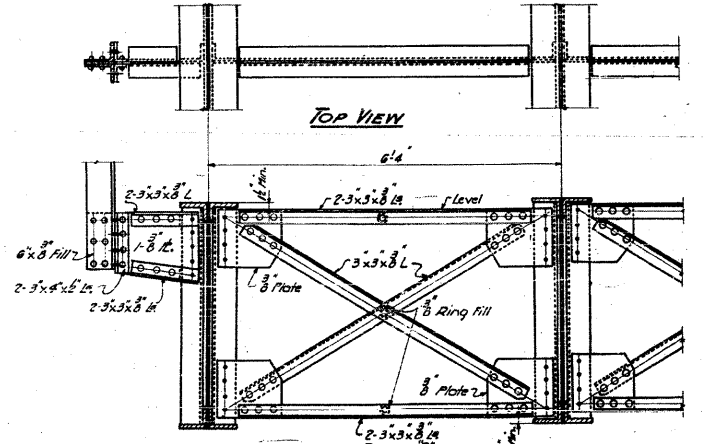


STATE OF ILLINOIS
DEPARTMENT OF PUBLIC WORKS & BUILDINGS
DIVISION OF HIGHWAYS

FORM NO. 100	ISSUED	TOTAL SHEETS	SHEET NO.	PROJECT NO.
4	6-1-57	36	20	ST. CLAIR
FED. ROAD DIST. NO. 7	ILLINOIS	OR AID PROJECT		



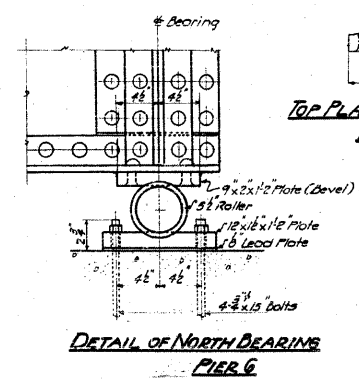
DETAILS OF END DIAPHRAGM AND RAILING POST CONNECTION AT PIERS 3 & 6



DETAILS OF CROSS FRAME AND RAILING POST CONNECTION AT INTERMEDIATE CROSS FRAMES

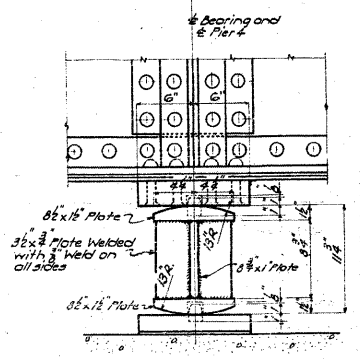
All other railing post connections in spans 4-3&6 are similar to those shown above.

STANDARD	COMPUTED	W. F. Wilby	EXAMINED	B-10 1954
	CHECKED	R. L. Bonner	DESIGNED	W. E. Hanson
	DRAWN	W. F. Wilby, M. Miller	ENGINEER OF BRIDGE AND TRUSS STRUCTURES	
	CHECKED	W. F. Wilby	PASSED	[Signature]
SPECIAL	ASSEMBLED		APPROVED	R. L. Bartholomew
	CHECKED			

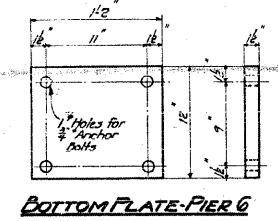
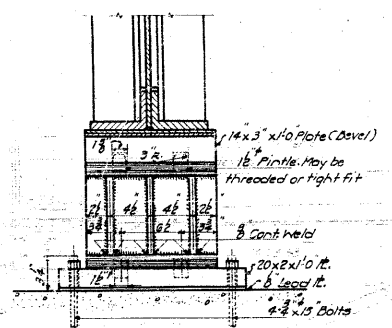


DETAIL OF NORTH BEARING PIER 6

TOP PLATE-SOUTH BEARING PIER 6



DETAIL OF BEARING PIER 4

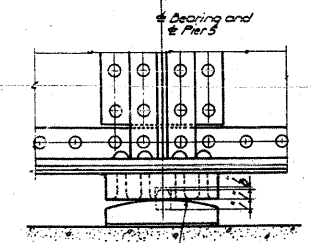


BOTTOM PLATE-PIER 6

ROLLERS-PIER 6

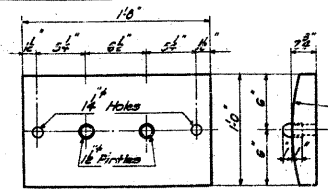
Rollers may be built as shown or milled from the solid. If milled from the solid the end projections may be omitted.

DETAIL OF BEARING PIER 5

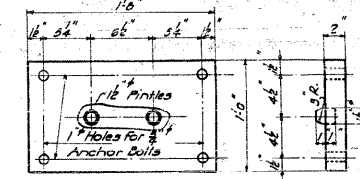


TOP PLATE-PIER 5

BOTTOM PLATE-PIER 5



TOP PLATE-PIER 4

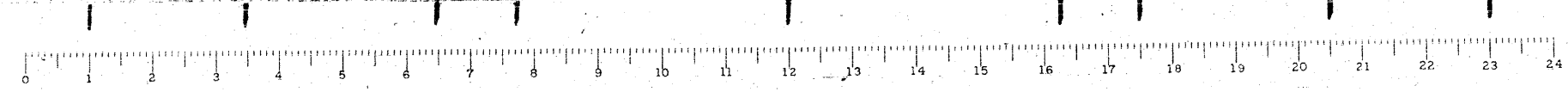


BOTTOM PLATE-PIER 4

For Bearing Details at Pier 3 See Sheet 15
For Section of Pier 6 See Sheet 16
For details of Handrail Posts and Railing See Sheet 14

**DETAILS- SPANS 4-5&6
GRADE SEPARATION
MISSOURI PACIFIC R.R.
NORTH OF DUPO**

**F.A. ROUTE 4 - SEC. 64-1-VB&F
ST. CLAIR COUNTY**



FOR INFORMATION ONLY

FILE NAME =	USER NAME = CFC...	DESIGNED -	REVISED -	STATE OF ILLINOIS DEPARTMENT OF TRANSPORTATION	SN 082-0030 PLANS (ORIGINAL PLANS)	SCALE:	SHEET NO. OF SHEETS STA. TO STA.	F.A.P. R.T.E. 312	SECTION 64-1VBR	COUNTY ST. CLAIR	TOTAL SHEETS 259	SHEET NO. 106
...\\106-D876882-exist-bridge-plans-06.dgn	PLOT SCALE = 40.000000' / 1"	DRAWN -	REVISED -								CONTRACT NO. 76882	
PLOT DATE = 9/5/2010	DATE - / /	CHECKED -	REVISED -								ILLINOIS FED. AID PROJECT	
		REVISOR -	REVISED -									

CB Coombe-Bloxdorf P.C.
- CIVIL ENGINEERS -
- STRUCTURAL ENGINEERS -
- LAND SURVEYORS -
Design Firm License No. 184-002703