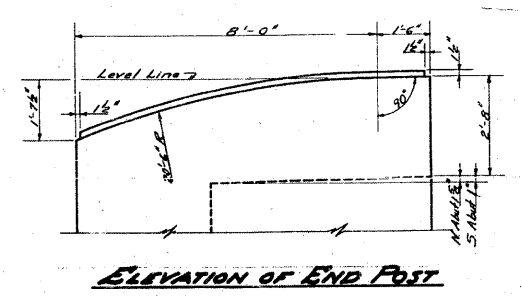
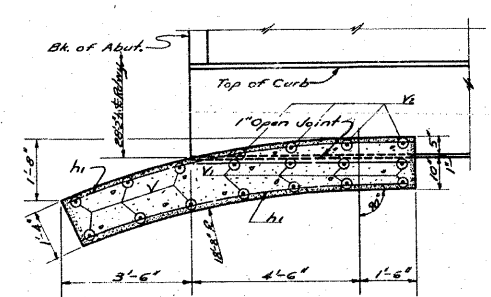
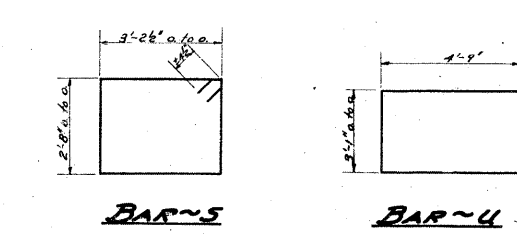
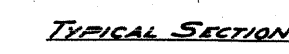
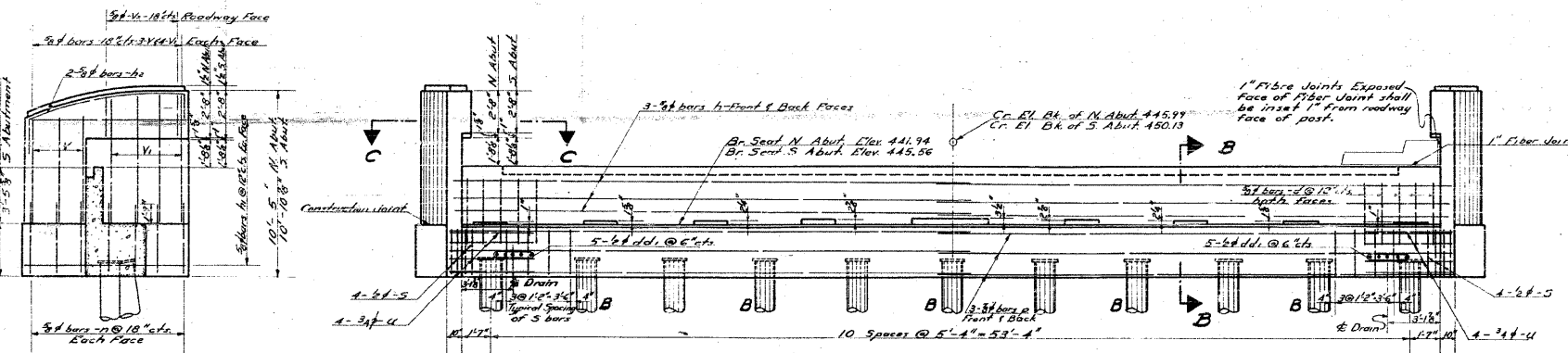
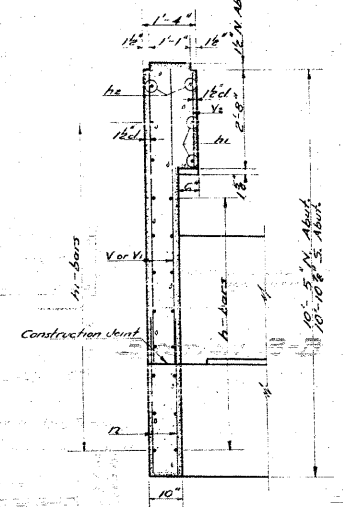
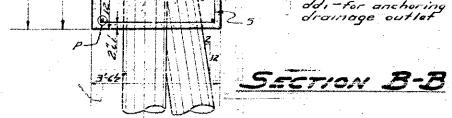
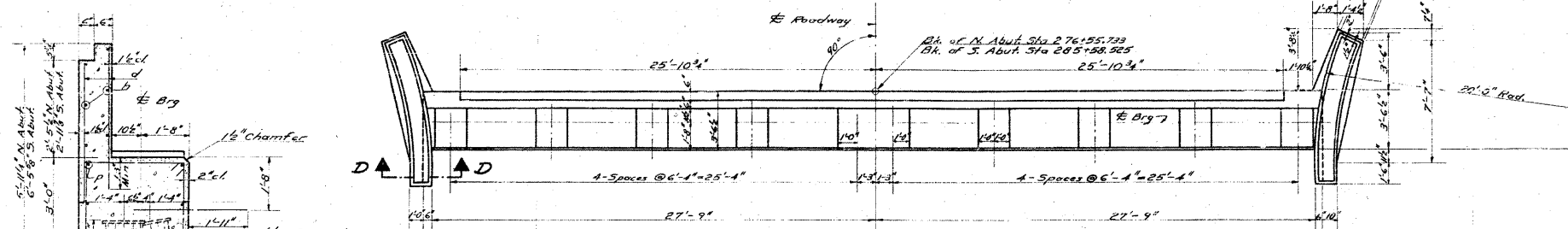


STATE OF ILLINOIS  
DEPARTMENT OF PUBLIC WORKS & BUILDINGS  
DIVISION OF HIGHWAYS

ROUTE NO.	SECTION	COUNTY	TOTAL SHEETS	SHEET NO.
F.A. 4	64-1VB	St. Clair	36	26
FED. ROAD DIST. NO. 1		ILLINOIS	FED. AID PROJECT	

SHEET NO. 26  
30 SHEETS



**BILL OF MATERIAL - 2 ABUTS.**

BAR	NO	SIZE	LENGTH	SHAPE
h	24	3/8"	29'-6"	
h1	72	3/8"	9'-0"	
h2	8	3/8"	12'-0"	
V	24	3/8"	6'-0"	
V1	32	3/8"	7'-0"	
V2	16	3/8"	2'-9"	
d	228	3/8"	4'-9"	
dd1	20	3/8"	3'-9"	
P	24	3/8"	29'-9"	
u	16	3/8"	12'-7"	
n	56	3/8"	4'-6"	
s	96	1/2"	12'-6"	

Note:  
N. Abut. 14" #7 Gauge Metal Shell Pile  
Capacity 35,700  
Length 65'-0"  
10 - Reg'd  
1 - Test Pile  
S. Abut. 14" #7 Gauge Metal Shell Pile  
Capacity 35,700  
Length 65'-0"  
10 - Reg'd  
1 - Test Pile

Class X Concrete Cu Yds 72.7  
Reinforcement Bars Lbs. 5880  
14" Metal Shell Piles Lin Ft. 1300  
14" Metal Shell Test Piles Ea. 2  
Class A Excavation for Structures Cu Yds. 75.0

**ABUTMENTS**

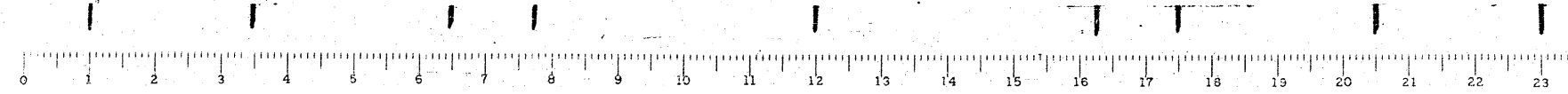
**GRADE SEPARATION  
MISSOURI PACIFIC R.R.  
NORTH OF DUFO**

**F.A. Rt. 4 SECTION 64-1VB  
ST. CLAIR COUNTY**

DESIGNED *Faigul M. Schick*  
CHECKED *W. H. Sommer*  
DRAWN *C. M. A. R.V. Griffin*  
CHECKED *W.H.S.*

EXAMINED *W.E. Hanson*  
PASSED *[Signature]*  
APPROVED *[Signature]*

B-10 1954



FOR INFORMATION ONLY

**CB Coombe-Bloxdorf P.C.**  
- CIVIL ENGINEERS -  
- STRUCTURAL ENGINEERS -  
- LAND SURVEYORS -  
Design Firm License No. 184-002703

FILE NAME =	USER NAME = CFC..	DESIGNED -	REVISED -	STATE OF ILLINOIS DEPARTMENT OF TRANSPORTATION	SN 082-0030 PLANS (ORIGINAL PLANS)	SCALE:	SHEET NO. OF SHEETS STA. TO STA.	F.A.P. SECTION COUNTY TOTAL SHEETS SHEET NO.
... \120-D876882-exist-bridge-plans-20.dgn	PLOT SCALE = 40.000000' / IN.	DRAWN -	REVISED -					312 64-1VBR ST. CLAIR 259 120
CB JOB NO 09021	PLOT DATE = 8/5/2010	CHECKED -	REVISED -					CONTRACT NO. 76882
		DATE - / /	REVISED -					ILLINOIS FED. AID PROJECT