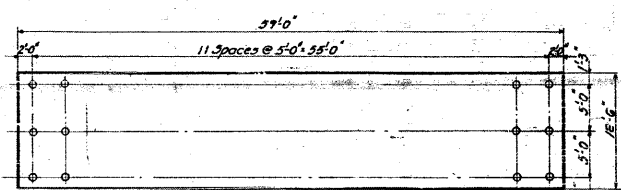
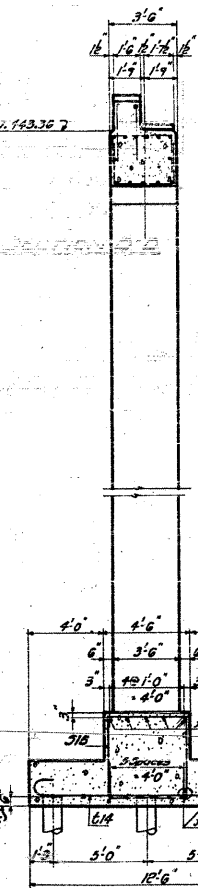
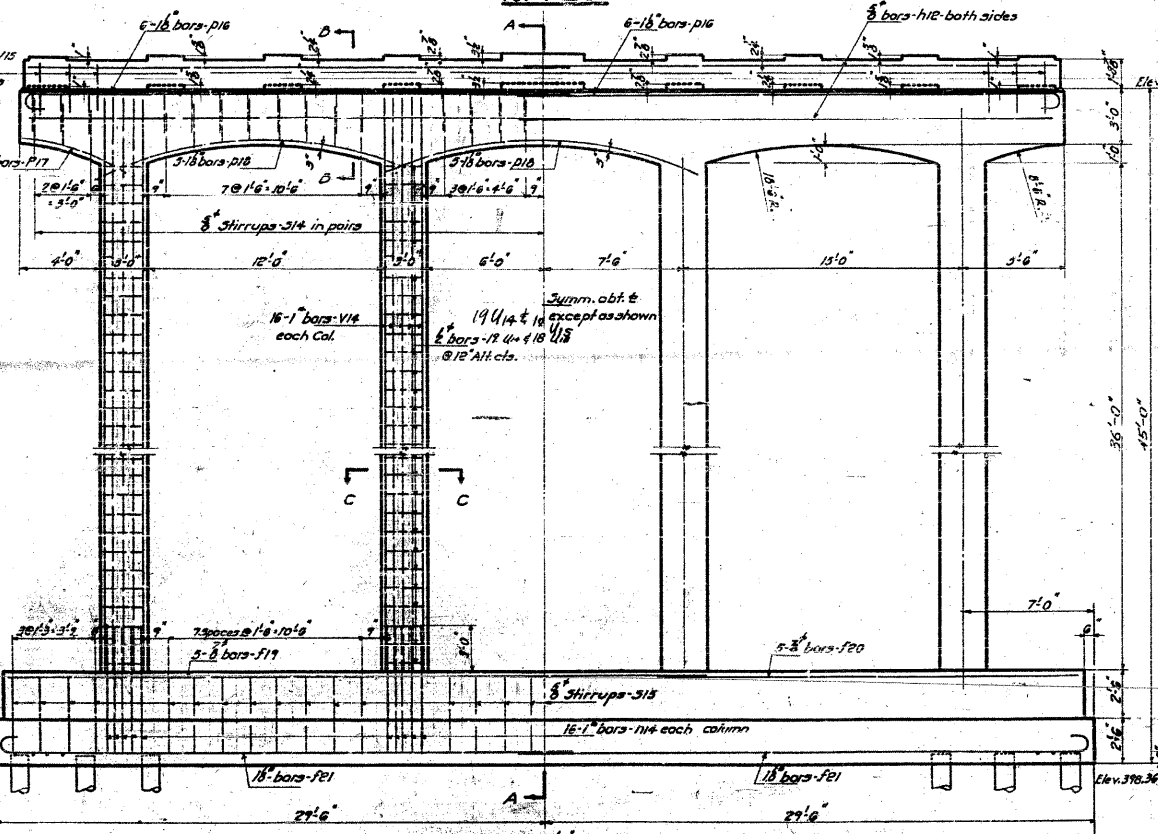
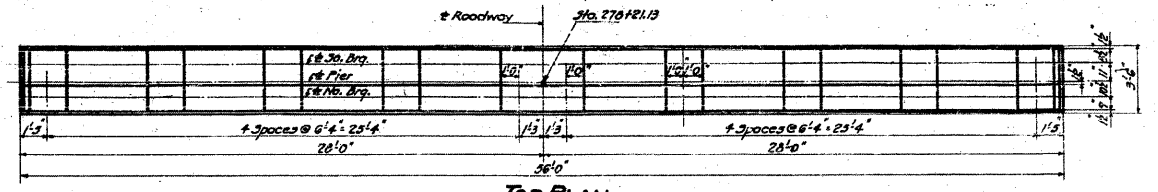
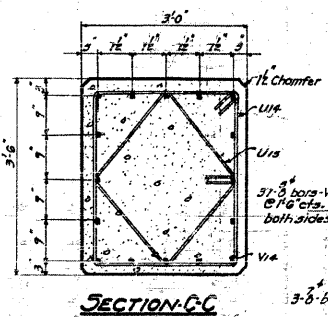
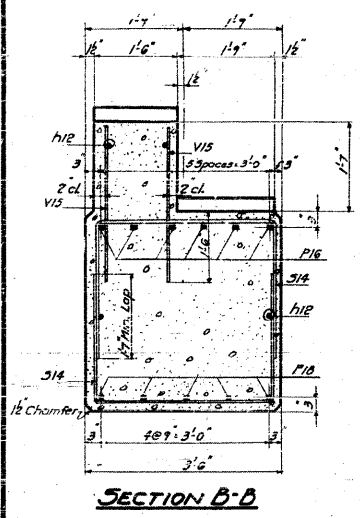
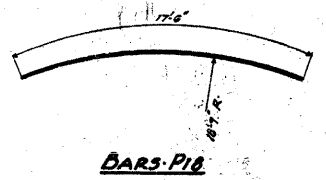
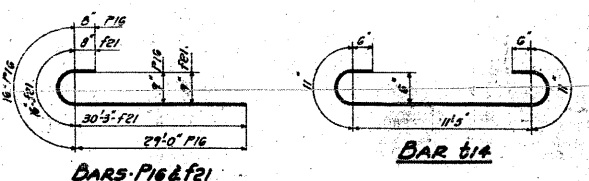


STATE OF ILLINOIS
DEPARTMENT OF PUBLIC WORKS & BUILDINGS
DIVISION OF HIGHWAYS

SECTION	COUNTY	TOTAL SHEETS	SHEET NO.
64-IVBR	St. Clair	29	29
SHEET NO. 29			
30 SHEETS			



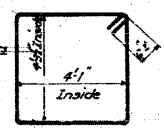
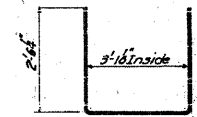
Indicates 24-ton 47 cu. ft. 12" Metal Shell Piles
piles 36' Reg'd.
No - Test Piles
Est. Length 34'-0"



BILL OF MATERIAL

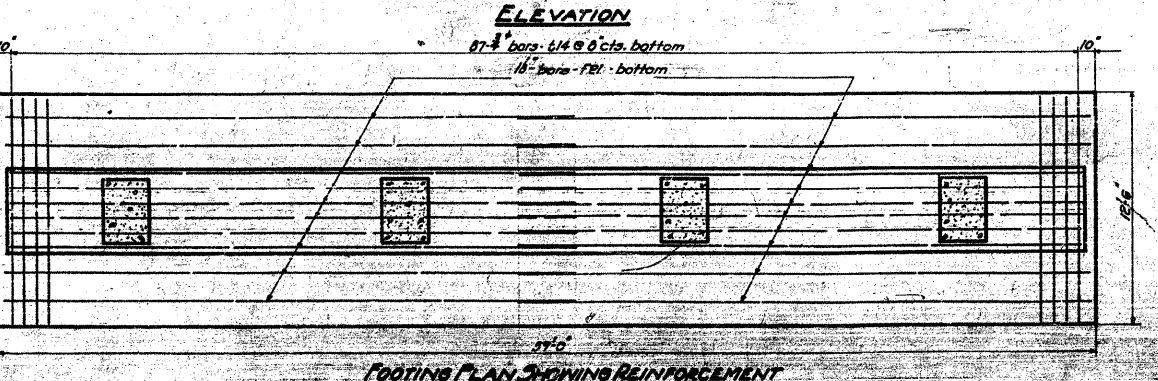
BAR	NO.	SIZE	LENGTH
F17	5	8"	37'-6"
F20	5	8"	22'-6"
F21	20	18"	32'-3"
H12	3	3"	20'-6"
H14	67	1"	7'-6"
H16	12	16"	31'-0"
H17	6	8"	6'-6"
H18	13	18"	17'-6"
S14	60	3"	6'-3"
S18	32	3"	16'-0"
S14	87	3"	14'-3"
U14	76	2"	12'-6"
U18	72	2"	7'-0"
V14	56	1"	39'-6"
V15	74	3"	3'-0"

Class-X Concrete Cu. Yds. 178.8
Reinforcement Bars Lbs. 21,110
12" Metal Shell Piles Lin. Ft. 1224
Class A Exc. for Structures Cu. Yds. 145

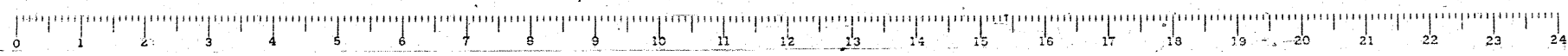


COMPUTED	W. F. Miller
CHECKED	W. F. Miller
DRAWN	W. F. Miller
CHECKED	W. F. Miller
ASSEMBLED	W. F. Miller
CHECKED	W. F. Miller

EXAMINED 8-10-54
W. E. Hanson
PASSED
APPROVED
R. L. Bartlett



PIER 3
GRADE SEPARATION
MISSOURI PACIFIC R.R.
NORTH OF DUPO
EA. ROUTE 4 - 7th ELEV
ST. CLAIR COUNTY



FOR INFORMATION ONLY

FILE NAME = ...N123-DB76882-exist-bridge-plans-23.dgn
PLOT SCALE = 48.000000 / IN.
PLOT DATE = 8/5/2018

USER NAME = CFC...
DESIGNED -
DRAWN -
CHECKED -
DATE - / /

REVISOR -
REVISIONS -
REVISOR -
REVISIONS -

STATE OF ILLINOIS
DEPARTMENT OF TRANSPORTATION

SN 082-0030 PLANS
(ORIGINAL PLANS)

SCALE: SHEET NO. OF SHEETS STA. TO STA.

CB Coombe-Bloxdorf P.C.
- CIVIL ENGINEERS -
- STRUCTURAL ENGINEERS -
- LAND SURVEYORS -
Design Firm License No. 184-002703

F.A.P. RTE.	SECTION	COUNTY	TOTAL SHEETS	SHEET NO.
312	64-IVBR	ST. CLAIR	259	123
				CONTRACT NO. 76882

ILLINOIS FED. AID PROJECT