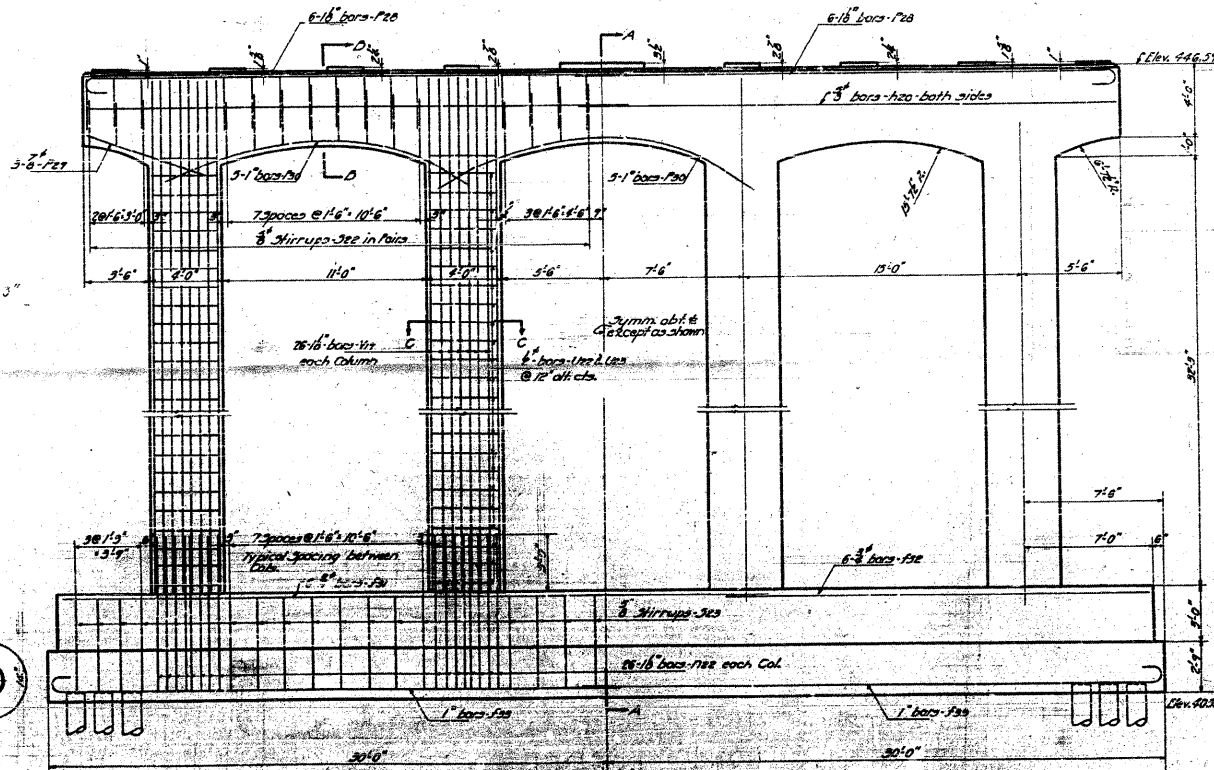
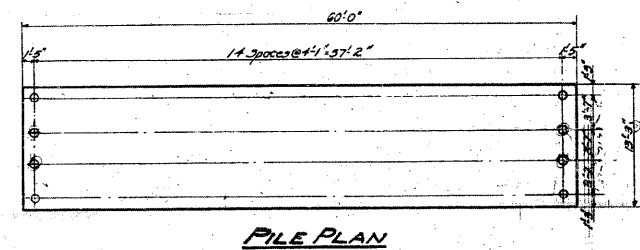
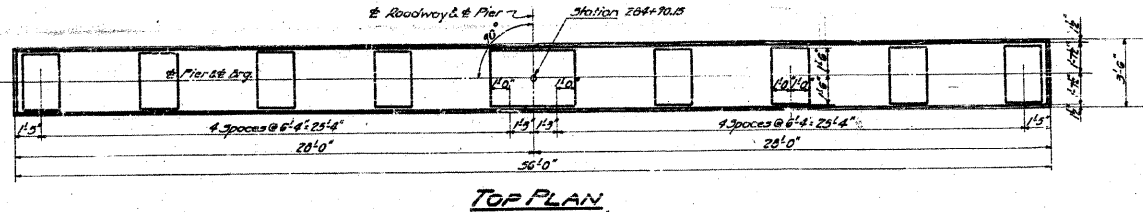
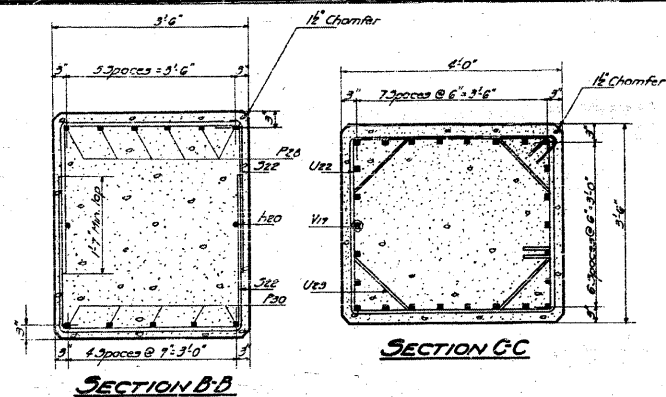


STATE OF ILLINOIS
DEPARTMENT OF PUBLIC WORKS & BUILDINGS
DIVISION OF HIGHWAYS

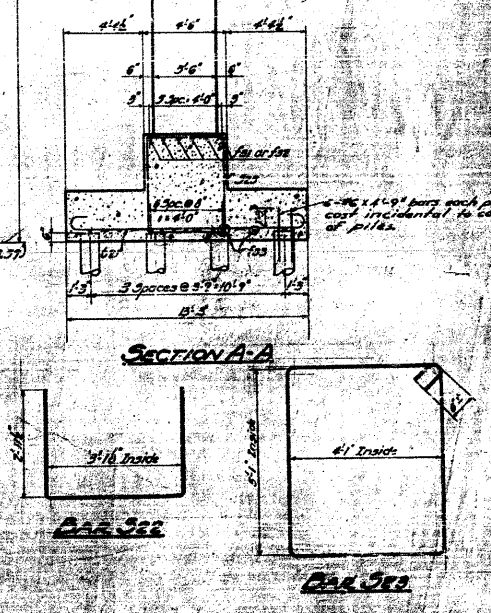
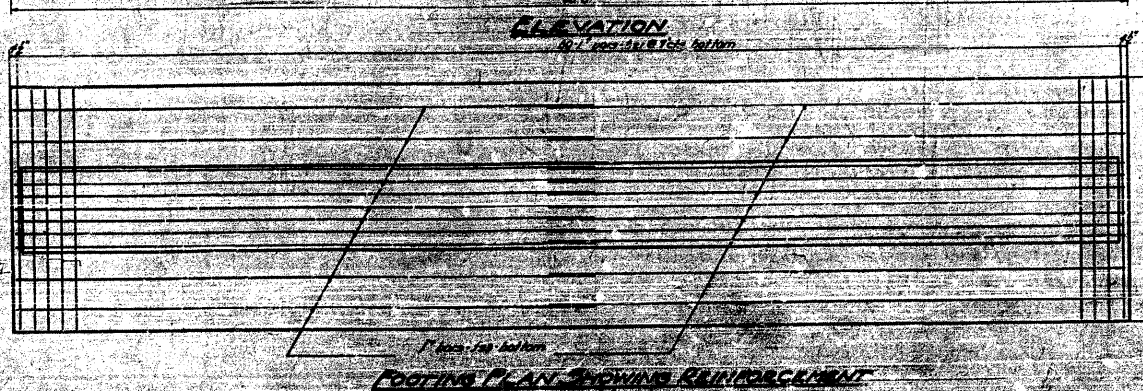
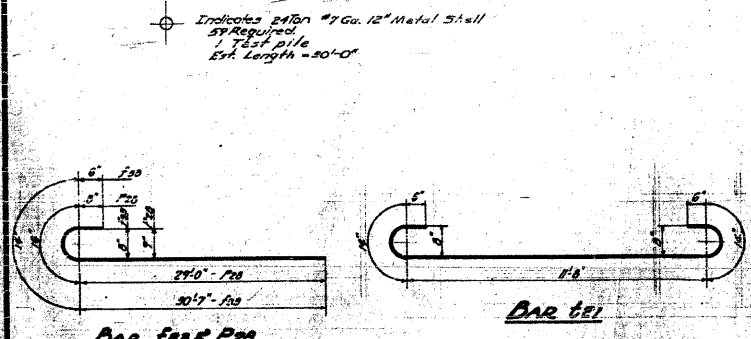
SECTION	COUNTY	TOTAL SHEETS	SHEET NO.
64-IVB	St. Clair	36	36
SHEET NO. 30			



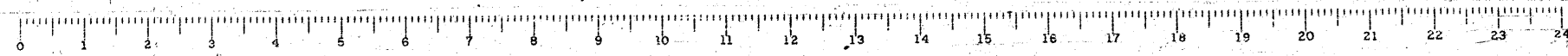
BILL OF MATERIAL

BAR NUMBER	SIZE	LENGTH
F21	6	30'-0"
F22	6	23'-0"
F23	22	32'-3"
H20	7	20'-6"
H22	10#	16" 6'-9"
F24	12	18" 5'-0"
F25	6	8" 7'-0"
F26	15	1" 19'-0"
J22	60	3" 9'-0"
J23	32	3" 14'-6"
B21	80	1" 13'-0"
U22	60	2" 14'-6"
U23	64	2" 12'-0"
V21	104	18" 56'-9"

Class-X Concrete Cu. Yds. 209.2
Reinforcement Bars Lbs. 31460
12" Metal Shell Piles Lin. Ft. 7770
12" Metal Shell Test Pile Each 1
Class A Exc. for Sit. Cu. Yds. 400



COMPUTED	W. J. Kelly	EXAMINED	B-10 1054
CHECKED	R. H. Sommer	W. E. Hanson	ENGINEER OF BRIDGE AND TRUSS STRUCTURES
DRAWN	J. R. Kelly	APPROVED	R. H. Pastorek
CHECKED	A. Miller		
SPECIAL			
APPROVED			
CHECKED			



FOR INFORMATION ONLY

CB Coombe-Bloxdorf P.C.
- CIVIL ENGINEERS -
- STRUCTURAL ENGINEERS -
- LAND SURVEYORS -
Design Firm License No. 184-002703

FILE NAME = ... \130-DB76882-exist-bridge-plans-30.dgn	USER NAME = CFC...	DESIGNED -	REVISOR -	STATE OF ILLINOIS DEPARTMENT OF TRANSPORTATION	SN 082-0030 PLANS (ORIGINAL PLANS)	F.A.P. R.T.E. 312	SECTION 64-IVBR	COUNTY ST. CLAIR	TOTAL SHEETS 259	SHEET NO. 130
PLOT SCALE = 40.000000' / IN.	PLOT DATE = 8/5/2018	DRAWN -	REVISOR -	SCALE:	SHEET NO. OF SHEETS STA. TO STA.	CONTRACT NO. 76882				
CB JOB NO 09021		CHECKED -	REVISOR -			ILLINOIS FED. AID PROJECT				