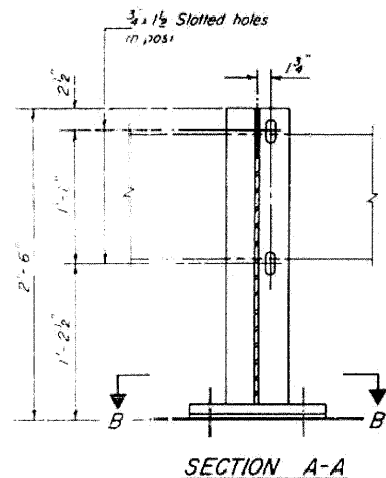


STATE OF ILLINOIS
DEPARTMENT OF TRANSPORTATION

ROUTE NO.	SECTION	COUNTY	TOTAL SHEETS	SHEET NO.
64-1VBR	ST. CLAIR	23	5	18 SHEETS



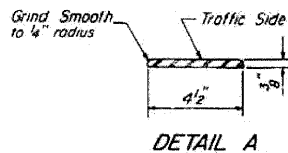
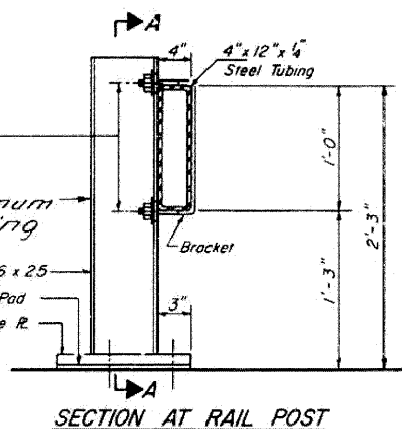
2-5/8" H.S. Studs with nut and flat hardened washer

10'-9" Maximum Post Spacing

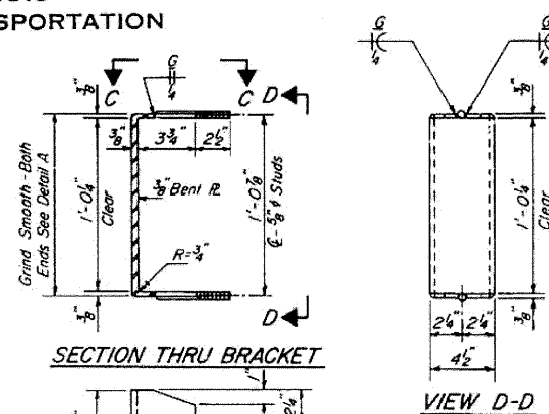
W 6 x 25
5/8" Fabric Pad
1/4" Base R.

SECTION A-A

ALTERNATE I

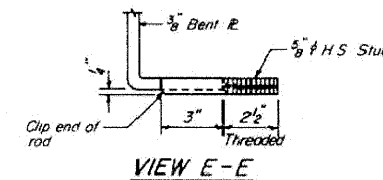


DETAIL A

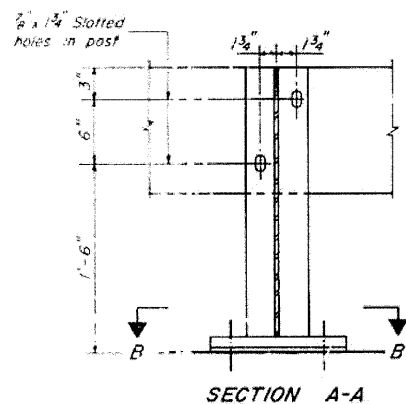


SECTION THRU BRACKET

VIEW D-D



VIEW E-E



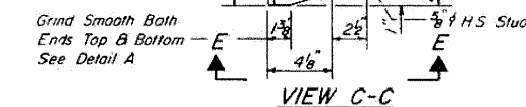
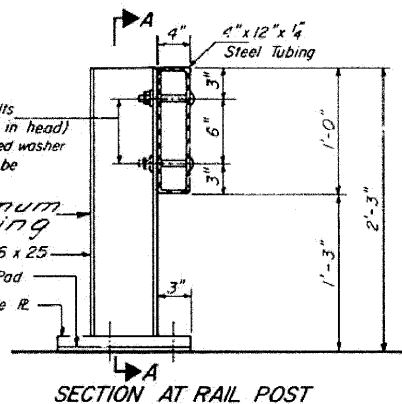
2-3/4" x 6" Round Head Bolts (With slot or approved recess in head) with locknut & flat hardened washer. 2" x 1 1/2" holes in tubing may be drilled in the field.

10'-9" Maximum Post Spacing

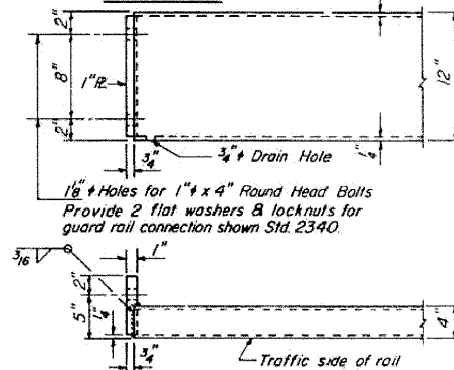
W 6 x 25
5/8" Fabric Pad
1/4" Base R.

SECTION A-A

ALTERNATE II

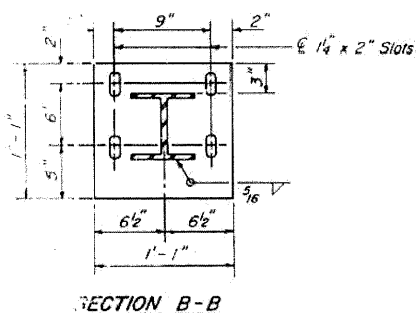


VIEW C-C

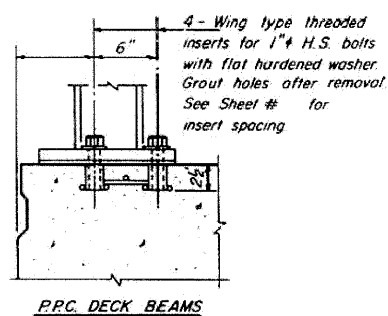


END OF RAIL DETAILS

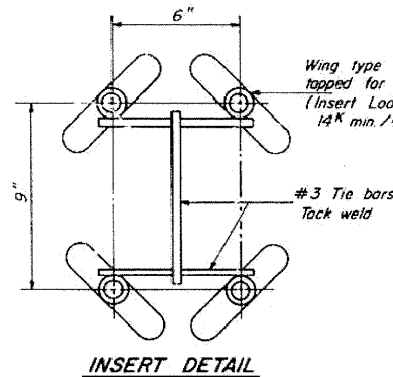
NOTES
Hollow structural steel tubing shall conform to the requirements of ASTM designation A-500 Grade B Structural Steel Tubing.
All other steel shapes and plates shall conform to the requirements of AASHTO M-183 except posts and brackets shall conform to AASHTO M 223 Grade 50.
Bolts, cap screws, and nuts shall conform to the requirement of ASTM designation A-307 except for high strength bolts, threaded rods, studs, nuts and washers noted which shall conform to AASHTO M-164.
The bridge rail shall receive one shop coat of a steel prime paint.
The 1" high strength bolts or threaded rods used to connect the railposts shall be tightened in accordance with Article 50704(g)(3) of the Standard Specification.
See Special Provisions for Temporary Bridge Rail.
The contact surfaces between post flange, rail and inside face of bracket for Alternate J shall be free of all lubricants.
The nut for 5/8" high strength studs used in Alternate I to connect bracket to post shall be tightened to a snug fit and given an additional one half turn.



SECTION B-B



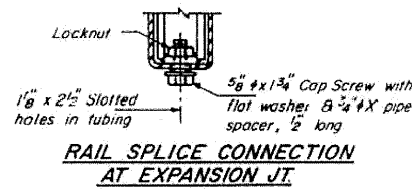
P.P.C. DECK BEAMS



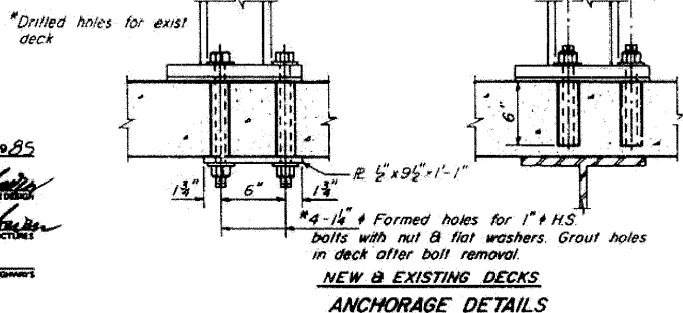
INSERT DETAIL

Wing type threaded inserts tapped for 1" H.S. bolts (Insert Load Capacity = 14K min./bolt)

#3 Tie bars Tack weld

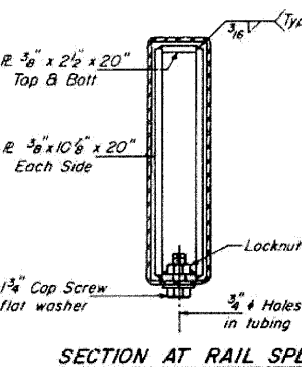


RAIL SPLICE CONNECTION AT EXPANSION JT.

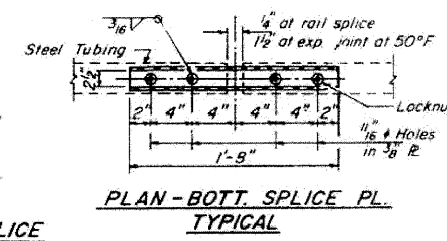


NEW & EXISTING DECKS ANCHORAGE DETAILS

*Drill 4-1 1/4" holes for 1" threaded rods with hex nut & flat washer. Epoxy grout rods. See Special Provisions



SECTION AT RAIL SPLICE



PLAN - BOTTOM SPLICE PL. TYPICAL

BILL OF MATERIAL

Item	Unit	Quantity
Temporary Bridge Rail	Lin Ft	903

TEMPORARY BRIDGE RAIL

DESIGNED	EXAMINED	1985
CHECKED	PASSED	
DRAWN	APPROVED	
CHECKED		

D-25 C.L. 82

FILE NAME =	USER NAME = CFC...	DESIGNED -	REVISED -
...137-0876882-exist-bridge-repair-plans-97.dgn		DRAWN -	REVISED -
	PLOT SCALE = 40,000,000 / 1 IN.	CHECKED -	REVISED -
	PLOT DATE = 8/5/2010	DATE - / /	REVISED -

STATE OF ILLINOIS
DEPARTMENT OF TRANSPORTATION

SN 082-0030 PLANS
(REHABILITATION PLANS)

SCALE: SHEET NO. OF SHEETS STA. TO STA.

F.A.P. RTE.	SECTION	COUNTY	TOTAL SHEETS	SHEET NO.
312	64-1VBR	ST. CLAIR	259	137
				CONTRACT NO. 76882
ILLINOIS FED. AID PROJECT				

CB Coombe-Bloxdorf P.C.
- CIVIL ENGINEERS -
- STRUCTURAL ENGINEERS -
- LAND SURVEYORS -
Design Firm License No. 184-002703

FOR INFORMATION ONLY