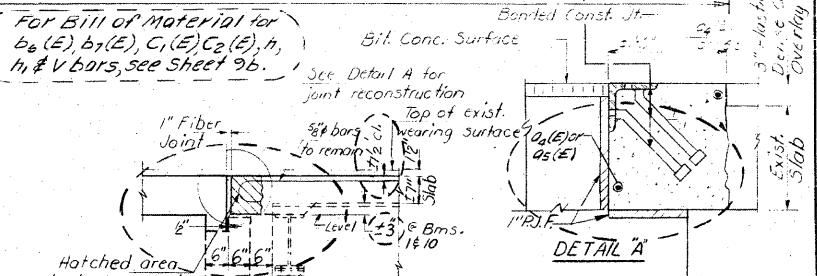
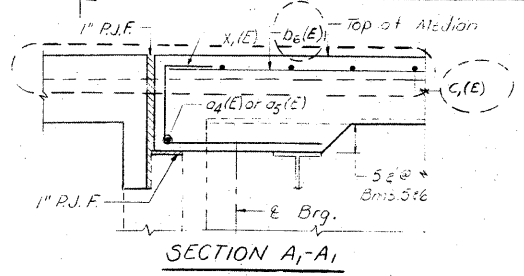
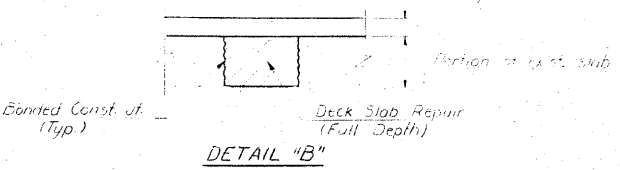
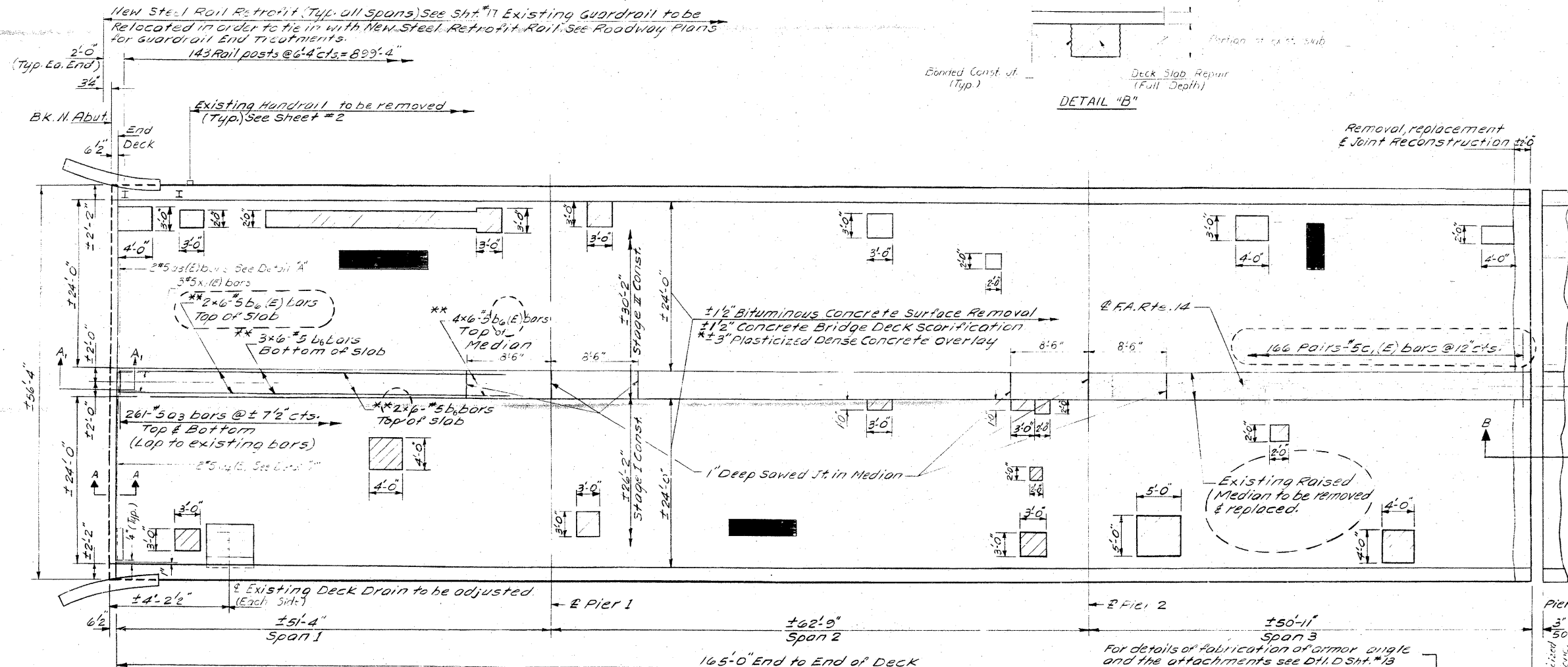


STATE OF ILLINOIS
DEPARTMENT OF TRANSPORTATION

ROUTE NO.	SECTION	COUNTY	TOTAL SHEETS	SHEET NO.
FA 14	IVBR	ST. CLAIR	25	13a
SHEET NO. 94 15 SHEETS				



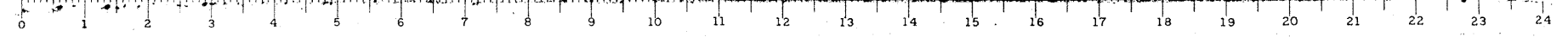
DESIGNED	EXAMINED
CHECKED	APPROVED
DRAWN	APPROVED
CHECKED	

Shaded areas represent Deck Slab Repair - Partial Depth. Actual areas and locations to be determined in the field by the Engineer.
Hatched areas indicate Full Depth Deck Repairs. Areas and locations are approximate, actual areas and locations to be verified in the field by the Engineer.
* Plasticized Dense Concrete Overlay shall not be applied until Deck Slab Repairs are completed and the end joints are reconstructed. See Detail B.

For Cross section see sheet #2.
For Sections B-B, C-C, & Bill of Material see sheet #14.
Bars indicated thus 3x20-#5 etc. indicates 3 lines of bars with 20 lengths per line.
Min lap for #5 bars shall be 1'-8" unless otherwise noted.
** For Placement Details, see Median Replacement Details sheet #14.
For Joint Removal Details see sheet #10.
For Joint Reconstruction Details, see sheet #14.
For Deck Drain Adjustment Details, see sheet #10.
Approximately 675 Sq. Ft. of Bridge Sidewalk Repair (Partial Depth) is included. Actual areas and locations to be determined in the field by the Engineer.

For Bill of Material for b₆(E), b₇(E), C₁(E), C₂(E), h₁ & V bars, see sheet #6.
For North Abut. Repair Details see sheet #9b.

DECK REPAIR DETAILS
SPANS 1, 2 & 3
FA. RTE. 14 SEC. 64-IVB1
ST. CLAIR COUNTY
STA. 218+07.13
AS R.



FOR INFORMATION ONLY

FILE NAME = ...143-0876882-exist-bridge-repair-plans	USER NAME = CFC...	DESIGNED -	REVISED -	STATE OF ILLINOIS DEPARTMENT OF TRANSPORTATION	SN 082-0030 PLANS (REHABILITATION PLANS)	SCALE:	SHEET NO.	OF	SHEETS	STA.	TO STA.	F.A.P. RTE. 312	SECTION 64-IVBR	COUNTY ST. CLAIR	TOTAL SHEETS 255	SHEET NO. 143	CONTRACT NO. 76882
PLOT SCALE = 40.000000' / IN.	PLOT DATE = 8/5/2010	DRAWN -	REVISED -			ILLINOIS FED. AID PROJECT											

CB Coombe-Bloxdorf P.C.
- CIVIL ENGINEERS -
- STRUCTURAL ENGINEERS -
- LAND SURVEYORS -
Design Firm License No. 184-002703