

STATE OF ILLINOIS
DEPARTMENT OF TRANSPORTATION

REVISED NO.	SECTION	SHEET	TOTAL SHEETS	SHEET NO.
1	64-1VBR	ST. CLAIR	259	151
SHEET NO. 13 18 SHEETS				

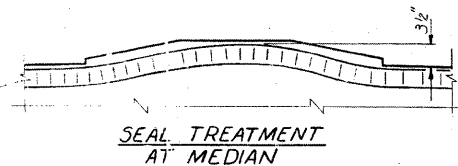
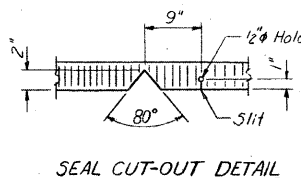
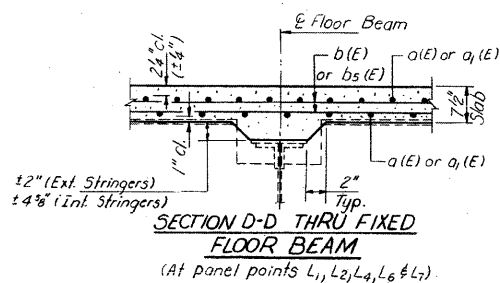
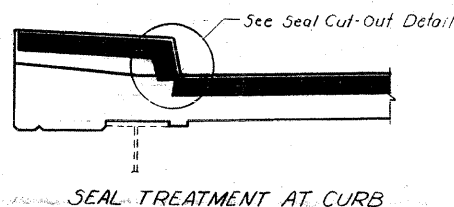
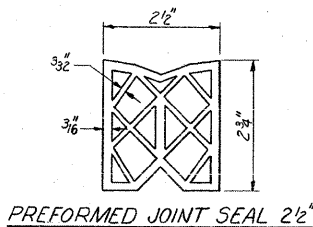
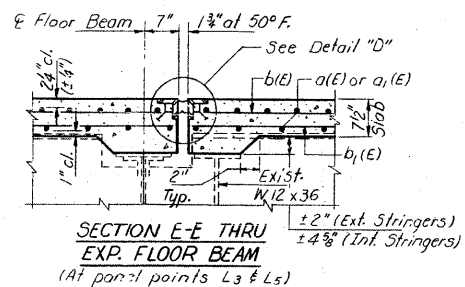


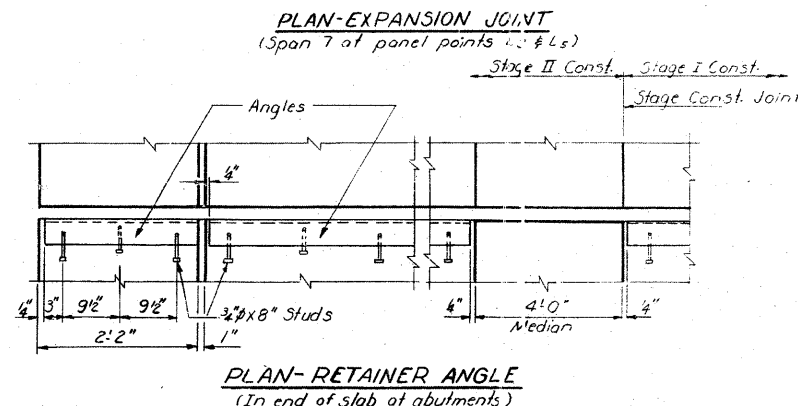
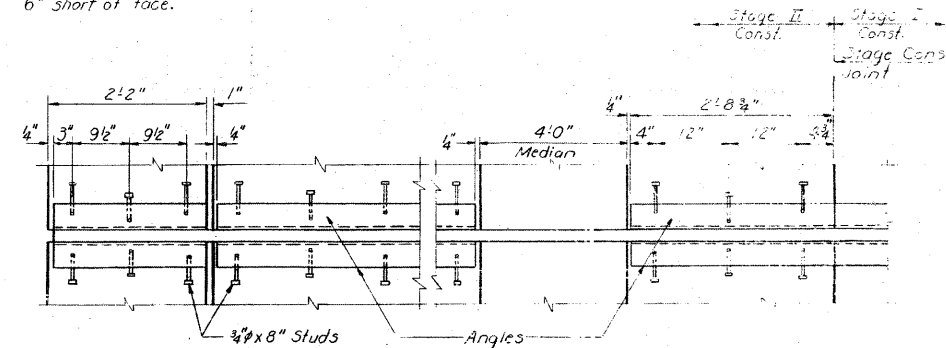
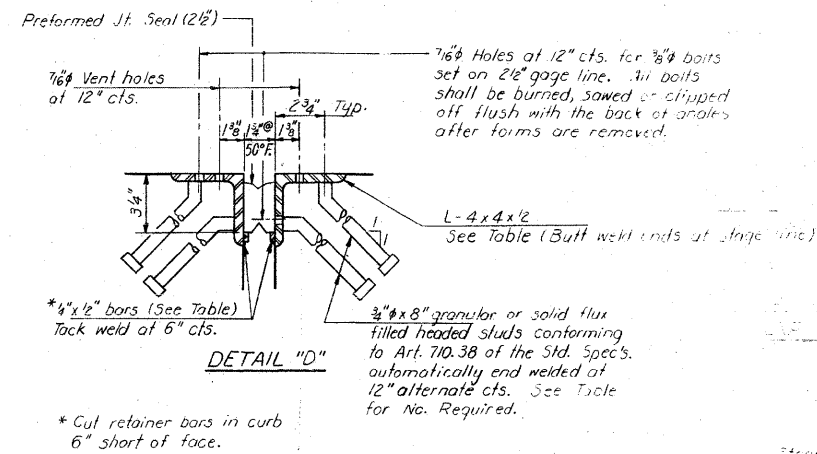
TABLE OF ANGLE AND BAR LENGTHS & NO. STUDS

Location	Stage I			Stage II (No. Bd. Lanes)			Stage II (So. Bd. Lanes)		
	Angle	Bars	No. Studs	Angle	Bars	No. Studs	Angle	Bars	No. Studs
Rdwy. (Sp. 110)	23°10'	48	48	23°10'	48	48			
Curbs	** 2°13'	** 17 3/4"	18	** 2°13'	** 17 3/4"	18			
Rdwy. (Span 7)	21°13'	21 1/4"	84	23°10'	23°10'	96	2°13'	2°13'	12

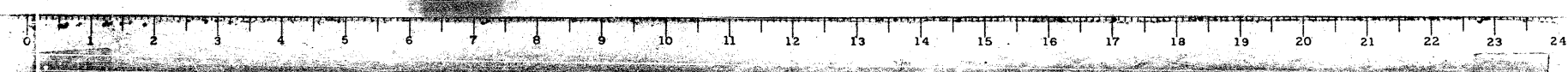
** Typical All.
*** Span 7 Only.

DESIGNED: *James Z. Robinson*
CHECKED: *James Z. Robinson*
DRAWN: *R. Doly*
CHECKED: *D.G.*

Feb. 4 1987
EXAMINED: *James Z. Robinson*
APPROVED: *James Z. Robinson*
DIRECTOR OF BRIDGE AND STRUCTURES



SUPERSTRUCTURE DETAILS
F.A. RT. 14 SEC. 64-1VBR
ST. CLAIR COUNTY
STA. 281+07.13



FOR INFORMATION ONLY

CB Coombe-Bloxdorf P.C.
- CIVIL ENGINEERS -
- STRUCTURAL ENGINEERS -
- LAND SURVEYORS -
Design Firm License No. 184-002703