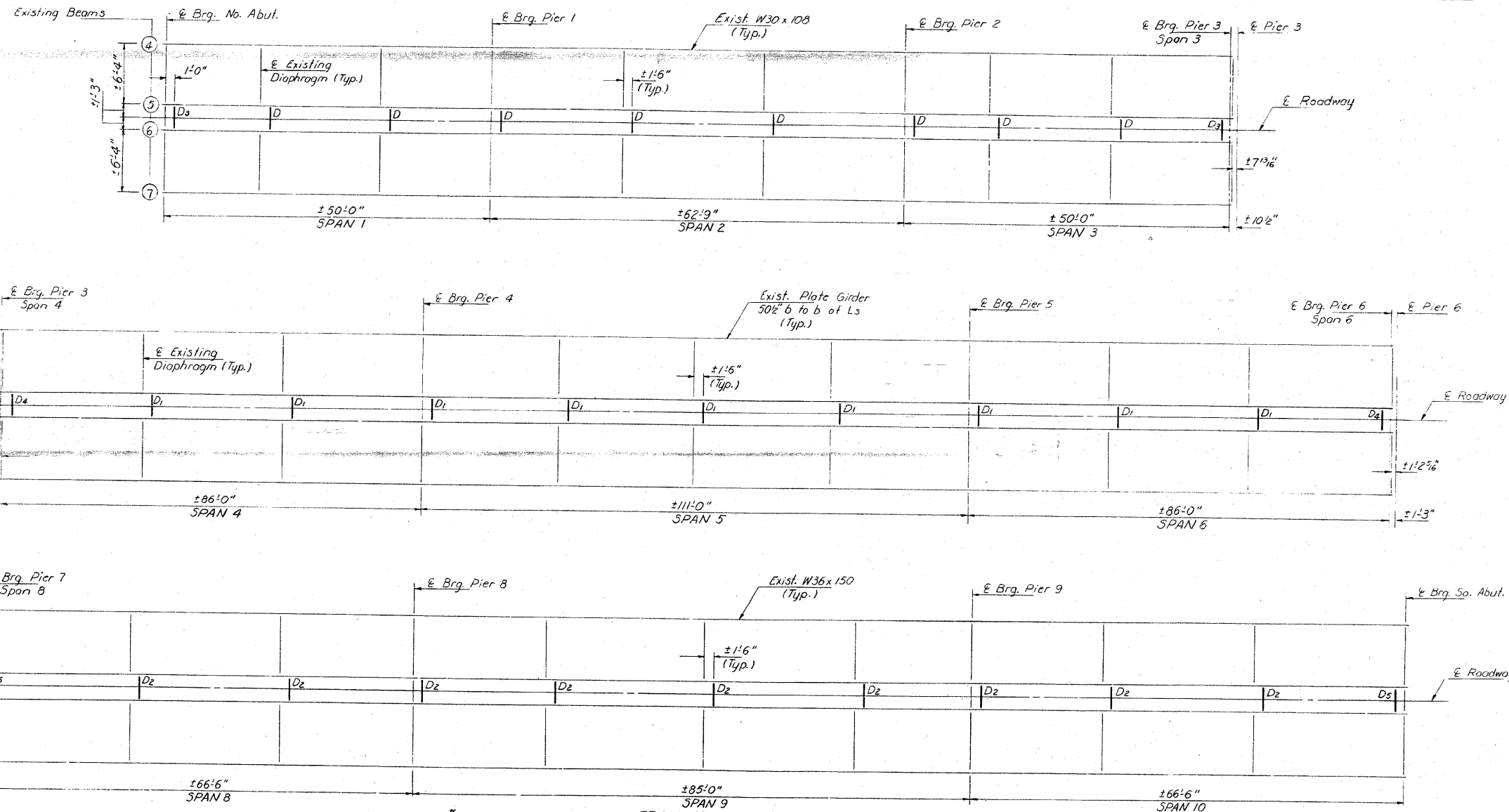


STATE OF ILLINOIS
DEPARTMENT OF TRANSPORTATION

ROUTE NO.	SECTION	COUNTY	TOTAL SHEETS	SHEET NO.
14	64-IVBR	ST. CLAIR	259	157
SHEET NO. 16				
18 SHEETS				

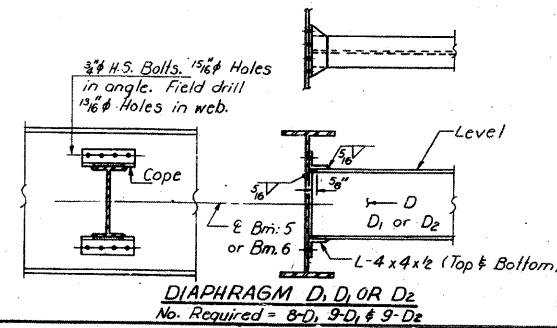


FRAMING PLAN

DESIGNED: *James Balcer*
CHECKED: *David Dwyer*
DRAWN: *R. Doty*
CHECKED: *D.G.*

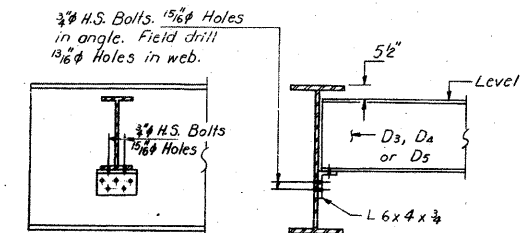
EXAMINED: *James J. Rappan*
APPROVED: *James J. Rappan*
DIRECTOR OF HIGHWAYS

Feb. 4 1981



Note: Hardened washers shall be required over all 1 5/8" holes.

D or D₃ = W10 x 26
D₁ or D₄ = W8 x 35
D₂ or D₅ = W12 x 35



STRUCTURAL STEEL DETAILS
SPANS 1 THRU 6 AND 8 THRU 10
F.A. RT. 14 SEC. 64-IVB1
ST. CLAIR COUNTY
STA. 281+07.13

FOR INFORMATION ONLY

CB Coombe-Bloxdorf P.C.
- CIVIL ENGINEERS -
- STRUCTURAL ENGINEERS -
- LAND SURVEYORS -
Design Firm License No. 184-002703

FILE NAME = ...157-0876882-exist-bridge-repair-plans-27.dgn	USER NAME = CFC...	DESIGNED -	REVISED -	STATE OF ILLINOIS DEPARTMENT OF TRANSPORTATION	SN 082-0030 PLANS (REHABILITATION PLANS)	F.A.P. RTE. 312	SECTION 64-IVBR	COUNTY ST. CLAIR	TOTAL SHEETS 259	SHEET NO. 157		
PLOT SCALE = 40,000,000 / 1 IN.	DATE - / /	DRAWN -	REVISED -			SCALE:	SHEET NO. OF SHEETS STA. TO STA.	CONTRACT NO. 76882				
PLOT DATE = 8/5/2010	DATE - / /	CHECKED -	REVISED -			ILLINOIS FED. AID PROJECT						
CB JOB NO 09021	DATE - / /	CHECKED -	REVISED -									