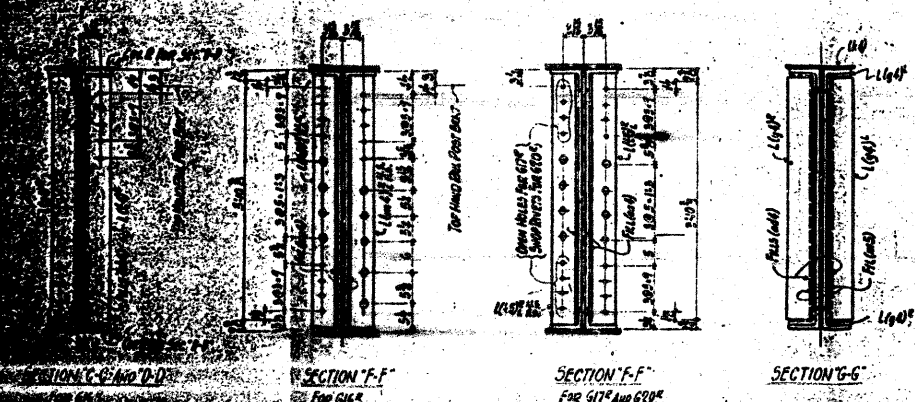


**BILL OF MATERIAL FOR ONE GIRDER G16 G17 OR G18**

2-GIRDER G-16-3-46-1/2 (180 3/4) @  
 1-GIRDER L 6-4-3-46-1/2 (180 3/4) @  
 1-PLATE R 30-3-46-1/2 (180 3/4) @  
 1-COV. R 14-3-106 (25)  
 1-COV. R 14-3-106 (25)  
 1-SPURCE L 9-3-3-5-2 (101 1/2) (1) GROUND NUTS TO FIT CONCRETE - BOLT  
 1-SPURCE R 14-3-3-5-2 (101 1/2) BOLT  
 2-STR L 5-3-3-4-1 (113) FOR THE G17 & G18  
 4-FIL 3/4-3-3-4 (105)

2-SPURCE L 14-3-3-5-2 (101 1/2) (1) GROUND NUTS TO FIT CONCRETE - BOLT  
 2-SPURCE R 14-3-3-5-2 (101 1/2) BOLT  
 1-SPURCE R 14-3-3-5-2 (101 1/2) BOLT  
 2-STR L 5-3-3-4-1 (113) (1) (1) COMP 16 GROUND NUTS FOR G16  
 8-STR L 5-3-3-4-1 (113) (1) (1) COMP 16 GROUND NUTS FOR G16  
 4-STR L 5-3-3-4-1 (113) (1) (1) COMP 16 GROUND NUTS FOR G16  
 1-FIL 3/4-3-3-4 (105) GROUND NUTS  
 1-FIL 3/4-3-3-4 (105) GROUND NUTS  
 1-Dev R 14-3-3-5-2 (101 1/2) PWS

| TOTAL NO<br>REQD | DESCRIPTION | MARK | SECTION |   |   |   |
|------------------|-------------|------|---------|---|---|---|
|                  |             |      | A       | B | C | D |
| ONE              | GIRDER      | G16  | 1       |   |   |   |
| ONE              | PLATE       | G16  | 1       |   |   |   |
| ONE              | PLATE       | G17  | 1       |   |   |   |
| ONE              | PLATE       | G17  | 1       |   |   |   |
| ONE              | PLATE       | G18  | 1       |   |   |   |
| ONE              | PLATE       | G18  | 1       |   |   |   |
| ONE              | PLATE       | G19  | 1       |   |   |   |
| ONE              | PLATE       | G19  | 1       |   |   |   |
| ONE              | GIRDER      | G20  | 1       |   |   |   |



**NOTE 'A'**  
 No Paint On The Faces & Edges Of G16  
 And Flange Angles In Distances INDICATED  
 FOR THE ANCHORAGE DRAWING SEE SHEET 608  
 FOR THE ANCHORAGE SEE SHEET 608

When Sheets 1 To 8 Inclusive Together  
 When Sheets 7 And 8 Together As One Sheet

**GRADE SEPARATION FOR MISSOURI PACIFIC R.R.  
 DRAWING - STIMMELL BROTHERS & SECTION 64-1VBR  
 NORTH OF DEPT. ST. CLAIR COUNTY, ILLINOIS**

**DEVELOPMENT OF STEEL SHOP DRAWINGS**

DESIGNED BY: [Name]  
 DRAWN BY: [Name]  
 CHECKED BY: [Name]  
 REVISIONS: [List]  
 SHOP NO. [Number] CONTRACT C63364

FOR INFORMATION ONLY