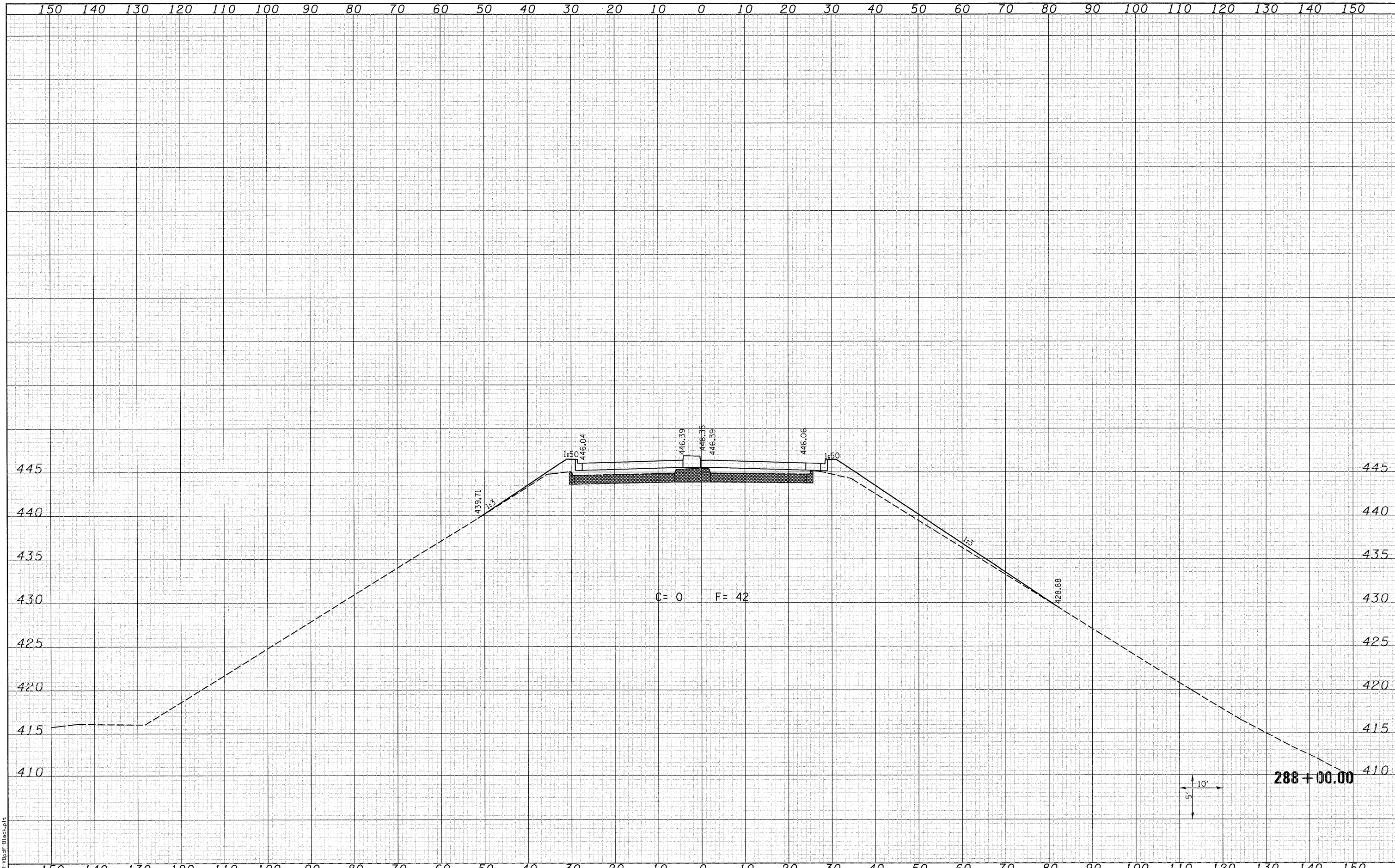


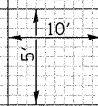
DATE	
BY	
SURVEYED	
PLOTTED	
TEMPLATE	
AREAS	
CHECKED	
FINL SURVEY	
NOTE BOOK	
NO.	

DATE	
BY	
SURVEYED	
PLOTTED	
TEMPLATE	
AREAS	
CHECKED	
ORIGINAL SURVEY	
NOTE BOOK	
NO.	



C = 0 F = 42

288 + 00.00



LAST SAVED = 8/4/2010
 PEN TABLE = V8-HorT.tbl
 PLOT DRIVER = TR-V8pdf-Backupt

FILE NAME =	USER NAME = berrechmann	DESIGNED -	REVISED -	STATE OF ILLINOIS DEPARTMENT OF TRANSPORTATION		IL 3 CROSS SECTIONS		F.A.P. RTE.	SECTION	COUNTY	TOTAL SHEETS	SHEET NO.
1:\07078\cad\t\plans\099-0876882-XSSht-IL 3.dwg		DRAWN -	REVISED -			312	64-IVBR	ST. CLAIR	259	251		
PLOT SCALE = 10.0005' / IN.		CHECKED -	REVISED -			CONTRACT NO. 76882						
PLOT DATE = 8/9/2010 10:22:27 AM		DATE -	REVISED -			ILLINOIS FED. AID PROJECT						
				SCALE: 1=10'H =5'V		SHEET NO. 23 OF 25 SHEETS		STA. 288+00.00 TO STA. 288+00.00				